

**FAMSI © 2004: Arturo René Muñoz**

## **The Ceramic Sequence of Piedras Negras, Guatemala: Type and Varieties<sup>1</sup>**



**Research Year:** 2003

**Culture:** Maya

**Chronology:** Classic

**Location:** Northwestern Guatemala

**Site:** Piedras Negras

### **Table of Contents**

[Abstract](#)

[Resumen](#)

[Introduction](#)

[Previous Research](#)

[Current Research](#)

[The Sample](#)

[Methods Employed in this Study](#)

[Piedras Negras Chronology and Typology](#)

[The Hol Ceramic Phase \(500 B.C.–300 B.C.\)](#)

[The Abal Ceramic Phase \(300 B.C.–A.D. 175\)](#)

[The Pom Ceramic Phase \(A.D. 175–A.D. 350\)](#)

[The Naba Ceramic Phase \(A.D. 350–A.D. 560\)](#)

[The Balche Ceramic Phase \(A.D. 560–A.D. 620\)](#)

[The Yaxche Ceramic Phase \(A.D. 620–A.D. 750\)](#)

[The Chacalhaaz Ceramic Phase \(A.D. 750–A.D. 850\)](#)

[The Kumche Ceramic Phase \(A.D. 850–A.D. 900?\)](#)

[The Post Classic](#)

[Type List](#)

---

<sup>1</sup> This report should be taken as a supplement to the "[Ceramics at Piedras Negras](#)" report submitted to FAMSI in April of 2002. In most regards, these two reports are complementary. However, it is important to note that the initial report was posted early in the research. In cases where these reports appear contradictory, the data presented here should be taken as correct.

[Acknowledgements](#)  
[Table of Images](#)  
[Sources Cited](#)

## **Abstract**

Between March of 2001 and August of 2002, the ceramics excavated from the Classic Maya site Piedras Negras between 1997 and 2000 were subject of an intensive study conducted by the author and assisted by Lic. Mary Jane Acuña and Griselda Pérez of the Universidad de San Carlos in Guatemala City, Guatemala.<sup>2</sup> The primary goal of the analyses was to develop a revised Type:Variety classification of the Piedras Negras ceramics. Our objective was to produce a sequence that was as representative of the site wide assemblage as possible, that took advantage of the excellent provenience data developed in the course of the 1997-2000 excavations, that reflected our improved understanding of the site's and region's historical trajectory as well as the developmental trajectory of ceramics elsewhere in the Maya Lowlands.

## **Resumen**

Entre marzo de 2001 y agosto de 2002, las cerámicas excavadas en el sitio maya clásico de Piedras Negras entre los años 1997 y 2000, fueron objeto de un estudio intensivo llevado a cabo por el autor, con la colaboración de la Lic. Mary Jane Acuña y de Griselda Pérez, de la Universidad de San Carlos, de la Ciudad de Guatemala, Guatemala. La meta fundamental de los análisis consistió en desarrollar una clasificación revisada de tipo:variedad, de las cerámicas de Piedras Negras. Nuestro objetivo fue el de producir una secuencia que representara de la manera más amplia posible el conjunto cerámico del sitio, aprovechando los excelentes datos de procedencia desarrollados durante las excavaciones que tuvieron lugar entre los años 1997 y 2000, que habrían de reflejar nuestra mayor comprensión de la trayectoria histórica del sitio y de la región, así como la trayectoria del desarrollo de las cerámicas en otros lugares de las tierras bajas mayas.

*Submitted 03/25/2004 by:*

Arturo René Muñoz  
University of Arizona  
[munoz@u.arizona.edu](mailto:munoz@u.arizona.edu)

---

<sup>2</sup> The excavations at Piedras Negras were directed by Dr. Stephen Houston, then a professor at Brigham Young University, and Héctor Escobedo, of the Universidad del Valle de Guatemala. The author wishes to thank both for the invitation to work at Piedras Negras, it was a rare opportunity.



## Introduction

Between March of 2001 and August of 2002, the ceramics excavated from the Classic Maya site Piedras Negras between 1997 and 2000 were subject of an intensive study conducted by the author and assisted by Lic. Mary Jane Acuña and Griselda Pérez of the Universidad de San Carlos in Guatemala City, Guatemala. The primary goal of the analyses was to develop a revised Type:Variety classification of the Piedras Negras ceramics. Our objective was to produce a sequence that was as representative of the site-wide assemblage as possible, that took advantage of the excellent provenience data developed in the course of the 1997–2000 excavations, that reflected our improved understanding of the site's and region's historical trajectory as well as the developmental trajectory of ceramics elsewhere in the Maya Lowlands. With regard to the developmental sequence of ceramics elsewhere in the Maya area, Bishop and Rand's research on the fine paste ceramics of the Pasión/Chixoy, and Jonuta regions were key, as was the comparative data shared with our project by ceramicists working with collections from other sites, most notably La Joyanca (Melanié Forne), Cancuén (Cassandra Bill), and El Mirador (Don Forsythe). The opportunity to see these collections and to work closely with these ceramicists, as well as our own observations of the ceramic type collections housed at the Ceramoteca and Museo Nacional in Guatemala City insured that our comparative understanding of the Piedras Negras ceramics was as broad and as accurate as possible.

The following report is broken into several sections. The first several sections describe the ceramic research at Piedras Negras, including the work of previous analysts, and the research begun in 2001. This is followed by a description of the Piedras Negras ceramic sample as well as a description of the methods used in deriving the ceramic sequence. This narrative concludes with a phase-by-phase description of the Piedras Negras ceramic sequence.

The goal of this narrative is to provide an introduction to the more substantial portion of this report – a full listing of the ceramic types and varieties that comprise the Piedras Negras ceramic sequence. The listings are arranged chronologically, and present the types and varieties arranged by group and ware. Digital photographs are included of almost all Late Classic decorated types. Together, the list of types and the digital photographs provide a substantial reference to the ceramics of Piedras Negras, and the first published archive of the ceramics.

## **Previous Research**

Piedras Negras has been subject to two major archaeological projects. The first was sponsored by the University of Pennsylvania and directed by first Frank Mason and later by Linton Sattlerwaite. The Pennsylvania project was active at the site between 1931 and 1939. The second project was directed by Stephen Houston of Brigham Young University and Héctor Escobedo of the Universidad del Valle. The BYU/Del Valle project was active at the site for four years, from 1997 to 2000.

Mary Butler (Butler 1935; see also Mason *et al.* 1934:35-36) and Frank Cresson (1937) attempted the first analyses of the Piedras Negras ceramics. Butler's work was primarily descriptive, though she did attempt to place the ceramics of Piedras Negras in chronological order following variations in decorative technique and stratigraphic association. Cresson's research focused on temporal variation in pottery foot forms, and the implications of this seriation for the dating of acropolis construction periods.

Robert Rands derived the first ceramic sequence for Piedras Negras in 1960. This research, undertaken in a search for materials comparable to those of Palenque (Robert Rands, personal communication, 2001) was reported briefly, in only a few publications (Rands 1967, 1973). In addition to these published papers, additional information on Rands' work with the Piedras Negras ceramics is recorded in a number of short manuscripts on file with the University Museum, University of Pennsylvania (Rands 1960, 1961).

George Holley, working with the ceramics excavated by the Pennsylvania Project, assembled the first Type:Variety description of the Piedras Negras ceramics (1983, 1986, 1987). Holley's work is in every respect an excellent source of data on the ceramics of Piedras Negras. However, as Holley notes, the erratic collection procedures employed by the Pennsylvania project, the uncertain division of the materials between Guatemala and American institutions, as well as the difficulties in reconstructing the provenience of specific deposits, resulted in a skewed ceramic sample significantly under-representing the variety and variability of the Piedras Negras ceramic assemblage (Holley 1983). Bachand (1997) applied Holley's seriation to the Piedras Negras ceramics housed in the Museo Nacional in Guatemala City.

## **Current Research**

Because of the importance of Piedras Negras in regional perspective, and because of the enormous ceramic sample available to us, we approached the analysis as if no previous work had been done with the Piedras Negras ceramics. We felt that the sample available to us and the importance of our work in a regional context merited as complete and independent analysis as possible—one based on our familiarity with Piedras Negras and the excavations, and on our own observations regarding local ceramic change.

The current research is based on a much larger and better provenienced sample than was available to previous researchers. Our overarching goal was to create as large and as varied a type collection as possible—one as representative of the overall diversity of the collection as possible. Our research has benefited from our first-hand knowledge of the site and excavations, and our direct consultation with excavators and other project members conducting materials analysis. The current research has also benefited as a result of our improved understanding of the region's historical trajectory (Culbert 1991; Stuart 1998; Martin and Grube 2000; Houston *et al.* 2003a, 2003b).

Throughout our research, we made a conscious effort to keep as many of the extant type, group, and complex names as possible. This was done in order to maintain comparability between our research and the work of Holley. We have, however, modified the ceramic complexes to concur with our own observations and with our understanding of ceramic change. As a result of our experience at the site and the improved contextual and historical data available to us, we feel that our work supercedes previous ceramic research and stands as the major resource for archaeologists working in this area in the future.

### ***The Sample***

Despite the great deal of work done at Piedras Negras during the 1930s, the extant ceramic sample available from those excavations is small, consisting of no more than about 12,000 sherds (Holley 1986:49). Though by some standards this may seem large, given the results of the recent excavation at Piedras Negras, this must represent only a fraction of the total material recovered. As an example of just how small a segment of the total *recovered* ceramic sample this must represent, during the 1998 season, the Proyecto Arqueológico Piedras Negras discarded, for logistical reason, 1.7 *tons* of non-diagnostic ceramics at the site. That same season over 25,000 diagnostic sherds, with a total weight of over two tons, were shipped to the project's laboratory facility in Guatemala City. This is more than double the total retained by the Pennsylvania project, and was the result of only a single season of excavation by the Piedras Negras archaeological project.

The total ceramic sample recovered by Piedras Negras archaeological project is enormous, more representative of the site-wide assemblage than the Penn sample, and very well provenienced. The current ceramic sample is comprised of over 100,000 sherds drawn from over 900 excavation units comprised of approximately 2,500 stratigraphic lots. The excavations from which this sample was drawn were placed in every major architectural group at Piedras Negras and at every level of settlement, and included test-pitting, horizontal stripping, and tunneling operations. Stratigraphic control while in the field was maintained through the use of a standardized recording system common to Maya archaeology—the "Altar" or "lot" system (Adams 1971:12).

## ***Methods Employed in this Study***

The Type:Variety system is the standard approach to ceramic classification in the Maya Lowlands and was the approach employed in our work. We followed this system of analysis as closely as possible, emphasizing the surface finish, color, and decoration over other aspects of vessel morphology. However, we found, that paste color and composition also served as useful chronological markers. These data, supplemented by data on vessel form, were used for defining chronologically sensitive varieties. This approach proved successful only because of the careful excavation of several sealed ceramic deposits.

The context and content of these deposits indicates that they probably did not result from the reuse of materials for construction fill or other processes resulting in the mixing of materials from disparate periods. As a result, we were confident that these deposits were the result of discrete activities and likely contained ceramics manufactured and used at about the same time. In short, we felt that the ceramic assemblages found in these deposits formed an adequate basis for defining ceramic complexes and for establishing provisional ceramic groups.

After completing sorting the ceramics from these unmixed deposits into their component ceramic groups, we moved on to deposits that were also likely single-phase deposits, but that were not the result of discrete activities. Instead, the majority of deposits analyzed at this stage of study came from less secure contexts including construction fill and shallow middens. Like much of the work done at the previous stage of the research, the intention of this analytical step was to increase the variety and variability of the materials within the provisional ceramic groups.

The ceramics recovered from the 1997 and 1998 excavations at Piedras Negras were sorted completely, i.e., every identifiable sherd from every lot was grouped with materials from the appropriate ceramic complex and group. As the ceramics were being sorted into groups, we recorded information on the assemblage composition of every lot. Data gathered included ceramic group, vessel form, vessel part, number of sherds (organized by form and part), and, finally, minimum number of vessels as determined from matches between pastes, form, and surface color. When the quantitative analyses of the Piedras Negras ceramics are completed, this data will have allowed us to track major changes in vessel form over time, and to use this data to supplement data on vessel finish for defining phases and complexes.

After completely sorting the ceramics excavated from the 1997 and 1998 field seasons, we moved on to the materials from the 1999 and 2000 seasons. Because our type collection was by this time already very large, we elected to only sample the materials from the 1999 and 2000 seasons. We continued analyzing every excavated ceramic lot, and recording the same assemblage information, but instead of sorting every sherd from every lot into groups, we selected only the best-preserved and most diagnostic sherds.

Once the analysis of all the excavated ceramic was completed, we began sorting the provisional ceramic groups into provisional types. In the same way that the ceramics from the special deposits were used to define provisional ceramics groups, materials from these deposits were used for the initial definition of types. Types were initially sorted by surface finish and decoration. Later, as we became more and more aware of the chronological importance of vessel shape and paste, we began to utilize these data in defining types and, more specifically, varieties. We took this approach because we felt that changes in shape, in combination with changes in surface finish or decoration, were more sensitive chronological indicators than surface finish alone.

Once the ceramics had been sorted into types (an iterative procedure requiring numerous passes through each provisional type grouping) we began recording type-specific data. Data was recorded on every sherd and included paste color, slip color, vessel shape, rim form, rim diameter, decorative motif, and the organization of decoration, (number and type of framing lines, position of decoration, etc.). These data were recorded in a manner amenable to easy quantification. The analysis of this data is underway, and the results will be presented in a forthcoming monograph. The analysis of the Early Classic ceramics from Piedras Negras is now essentially complete and has been presented as a thesis to the faculty of anthropology at the Universidad de San Carlos (Acuña 2004). Griselda Pérez is completing the analysis of the Preclassic ceramics from Piedras Negras.

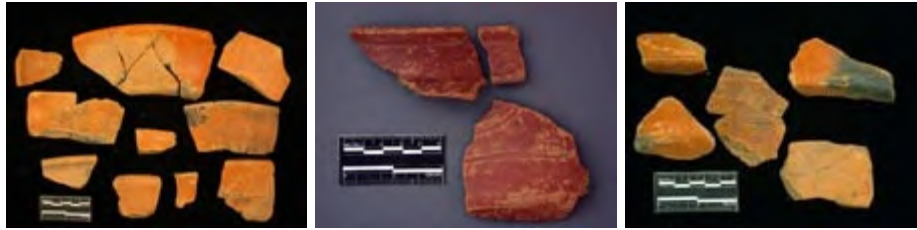
## **Piedras Negras Chronology and Typology**

This description outlines the major trends evident in the ceramics of Piedras Negras. A more detailed discussion of the ceramic sequence can be found in Muñoz, Acuña, and Perez (N.D.), Muñoz and Fitzsimmons (1998), Muñoz and Golden (2002), and Muñoz (N.D., 2000, 2001, 2002). The Piedras Negras ceramic sequence is divided into seven major ceramic complexes/phases spanning the Middle Preclassic to Terminal Classic ([Figure 1](#)). The most obvious difference between the sequence presented here and previous work is in the inclusion of two Preclassic complex/phases, and a provisional Terminal Preclassic phase. Materials dating to these periods are not present in the Pennsylvania ceramic sample. In all cases, the timing and typological content of the complex/phases have been altered. Finally, a few Postclassic pieces are known from Piedras Negras. These were likely left by late pilgrims to the site and cannot be properly described as comprising a ceramic complex.

	Uaxactun	Tikal	<b>PIEDRAS NEGRAS</b>	Altar de Sacrificios	Seibal	Palenque		
1000	Tepeu 3	Kaban	?		Bayal	Hulpale		
900				Jimba				
875		Eznab	<i>KUMCHE</i>	Boca				
850			late	late				
825			early	early				
800	Tepeu 2	Imix	late	Pasion	Tepejilote	Hulpale		
775			early			early	Balunte	
750			<i>chacalhaaz</i>					
725							late	Murcielagos
700			<i>YAXCHE</i>			late	early	
675			early					
650	Tepeu 1	Ik				Otulum		
625								
600			<i>BALCHE</i>	Chixoy				
575	Tzakol 3			Veremos				
550					late			
525			late	late	early		Cascada	
500		early	early	Ayn				
475	Tzakol 2	Manik			Junco	Motiepa		
450				<i>NABA</i>				
425								
400								
375								
350	Tzakol 1	Manik 1?						
325					Salinas			
300			<i>Pom(?)</i>					
275	Chicanel	Cimi				Picota		
250								
225								
200								
175								
150								
125								
100			late	Plancha	Cantutse			
			early	late				
A.D.		Chuen		early		Misolha		
-1			<i>ABAL</i>					
B.C.								
100								
150		Cauac						
200								
250								
300	Mamom	Tzec		San Felix	Escoba			
350						late		
400						early		
450			<i>HOL</i>					
500								
550		Eb		Xe	Real			
600								

Figure 1. Comparative Chronology of the Piedras Negras ceramic sequence.





### ***The Hol Ceramic Phase (500 B.C.–300 B.C.)***

The Hol ceramic complex represents the first major occupation of Piedras Negras. Based on comparisons with other sites, we estimate this phase to last from about 500 B.C. to approximately 300 B.C. In almost all respects, the Middle Preclassic ceramics of Piedras Negras resemble contemporary materials from elsewhere in the Petén. If any major differences can be noted between the Middle Preclassic assemblage of Piedras Negras and those of other sites, it may be visible in lack of variety in vessel forms, though this may be related to sample size.

Hol ceramics were found in seven locations at Piedras Negras, all in the southern sector of the site. Almost all Hol ceramics have been found in construction fill mixed with later Preclassic materials, though the lowest levels of a midden found in front of Str. R-5 consisted exclusively of Middle Preclassic ceramics. The total sample of diagnostic Hol ceramic material is small and fragmented, containing only about 350 diagnostic sherds. For this reason it is difficult to describe the complete range of forms represented. The most common forms appear to be thick-walled bowls or plates with divergent to out-curving walls, slipped jars with short, nearly vertical necks, and dishes with thickened direct, or thickened everted rims.

Slips tend to thick and waxy, with fire-clouding and crazing common. Red monochromes dominate the assemblage with both cream and black making up a smaller percentage of the assemblage. In general, incising, fluting, and gadrooning are the most common decorative modes. Resist decoration (Tierra Mojada Resist) is also known from Hol complex assemblages but is infrequent. Parallel rows of incised lines on the interior of plate rims are the most common decorative motif. Gadrooning or fluting on the exteriors of bowls is also common. The majority of all decorated vessels belong to the Joventud ceramic group. Cream and black monochrome vessels tend to be undecorated. Don Forsythe (personal communication 1999) has noted the Piedras Negras Middle Preclassic ceramics seem to be more heavily constructed than Middle Preclassic sites from elsewhere in the Petén.

Hol Ceramic Phase (500 B.C.–300 B.C.)				
Ware	Group	Type	Variety	Figure
Uaxactún Unslipped	Achiotes	Achiotes Unslipped	VU	
		Macabilero Unslipped	Macabilero	
Flores Waxy	Joventud	Joventud Red	VU	<a href="#">Joventud</a>
			Jolote	<a href="#">Joventud</a>
	Guitarra Incised	Pollo Desnudo	<a href="#">Guitarra</a>	
		VU	<a href="#">Guitarra</a>	
	Chunhinta	Chunhinta Black	VU	
	Pital	Pital Cream	VU	
		Paso Danto Incised	VU	<a href="#">Paso Danto</a>
	Tierra Mojada	Tierra Mojada	VU	<a href="#">Tierra Mojada</a>
Timax Incised		Timax	<a href="#">Timax</a>	



### ***The Abal Ceramic Phase (300 B.C.–A.D. 175)***

Late Preclassic ceramics have approximately the same distribution as Middle Preclassic ceramics—it is almost entirely limited to the southern sector of the site, though a small amount of Late Preclassic ceramic was found in one of the C-group structures located at the far north end of the site. In most cases, Late Preclassic materials are found mixed with earlier, Hol phase, ceramics. However, a large deposit of unmixed Late Preclassic ceramics was found stratified above Middle Preclassic ceramics in front of Str. R-5. This deposit proved key in defining this phase at Piedras Negras.

The Abal ceramic complex is dominated by monochrome reds, blacks, and creams. Slips are thick and waxy, and are frequently crazed. The most common forms are shallow dishes with thickened and slightly everted rims, or thickened direct rims, and jars with short, out-curving necks. Incising and fluting are the most common decorative

modes. Common types include Altamira Fluted, Lechugal Incised, and Laguna Verde Incised.

In most respects, the Late Preclassic ceramics from Piedras Negras are nearly indistinguishable from Late Preclassic materials found elsewhere in the Petén. A particularly close resemblance is noted with Cantutse phase materials ceramics from Seibal (Sabloff 1975) and Plancha phase ceramics from Altar de Sacrificios (Adams 1971). It is important to note, however, that the medial or labial flanges typical of Late Preclassic ceramics found elsewhere is quite rare at Piedras Negras. The cause of this is curious and, for the moment, inexplicable.

Abal Ceramic Phase (300 B.C.–A.D. 175)					
Ware	Group	Type	Variety	Figure	
Uaxactún Unslipped	Achiotes	Achiotes Alisado	Achiotes		
			VU		
		Macabilero Alisado	Macabilero		
		Undesig. Unslipped	VU		
	Sapote	Sapote Striated	Sapote	<a href="#">Sapote</a>	
			VU A		
			VU B		
Paso Caballos Waxy	Sierra	Sierra Red	Sierra		
			Tzu-Tzu	<a href="#">Sierra</a>	
		El Pato Bícromo	El Pato		
		Altamira Fluted	Altamira	<a href="#">Altamira</a>	
		Laguna Verde Incised	Laguna Verde		
	Mito		<a href="#">Sierra-Laguna Verde</a>		
	Flor	Flor Cream	Flor		
			Cantutse Incised	Cantutse	
			VU A		
			VU B		
	Polvero	Polvero Black	Polvero	<a href="#">Polvero-Lechugal</a>	
			VU		
		Lechugal Incised	VU		
	Boxcay	Boxcay Brown	Boxcay		
			Frijol		
		Esclavos Incised	Esclavos		
	Usumacinta Unslipped	Quemadal	Quemadal Alisado	Quemadal	
La Línea Incised			La Línea		

El Macho Micaceous	Pejelagarto Red	Pejelagarto Red	Pejelagarto	<a href="#">Pejelagarto</a>
		Pasadota Incised	Pasadota	
		Cojolita Bícromo	Cojolita	
	Karst Cream	Karst Cream	Karst	<a href="#">Karst</a>
		Dolines Red-on-Cream	Dolines	<a href="#">Dolines Red-on-Cream</a>
		Okol Incised	Okol	
	Selva Alta Black	Copal Bícromo	Copal	
	Boca del Cerro Brown	Boca del Cerro Brown	Boca del Cerro	
		Comillas Incised	Comillas	



### ***The Pom Ceramic Phase (A.D. 175–A.D. 350)***

Pom is a provisional grouping of types representing a Terminal Preclassic phase. Ceramics belonging to this phase have been found in only a few locations across the site, all located within the southern sector of the site, with the largest deposits found in excavations in front of Strs. R-2 and R-4. The current sample of Pom phase ceramics consists of approximately 900 diagnostic sherds and two vessels. The initial date of this phase is based on comparisons with other sites. The types defining the Pom phase all appear after about A.D. 150 at sites elsewhere in the Petén. Their appearance at Piedras Negras is placed later, at about A.D. 175 in order to accommodate for Piedras Negras peripheral location. The end of this period is established by appearance of Tzakol modes and types at about A.D. 350.

In most respects, the Pom phase ceramics are indistinguishable from Abal phase materials. Pom phase deposits are distinguishable, however, from Abal assemblages by the appearance of modes and forms diagnostic of the Terminal Preclassic elsewhere in the Petén. These include Usulután style decoration on hooked-grooved rim plates, Aguila-like orange slips, the use of mammiform supports, and the initial appearance of polychrome decoration. At Piedras Negras the most diagnostic Pom types include Ixcario Orange Polychrome, Metapa Trichrome, and Sacluc Black-on-Orange. Though

these types are useful markers for identifying Pom phase assemblages, their rarity limits their diagnostic utility. However, contemporary with the appearance of these types at Piedras Negras, is the appearance of the distinct, locally produced and widely distributed type, Otatal Orange Polychrome.

Otatal is generally decorated with parallel red and black lines painted over an Aguila-like orange slip. This combination of slip, palette, and design is restricted to this period at Piedras Negras, and is similar to the slip and decoration found on Terminal Preclassic vessels from Altar de Sacrificios (Adams 1971, Fig 26b, c; also Tikal illustration #22). Otatal Orange Polychrome and vessel forms rare elsewhere in the Petén and absent in the Abal complex (e.g. dishes with incurving walls and thickened rims, dishes with composite profiles and thickened and nearly vertical rims) may represent the beginning of a local style resulting from Piedras Negras isolation from Central Petén trends.

Pom Ceramic Phase (A.D. 175–A.D. 350)				
Ware	Group	Type	Variety	Figure
Uaxactún Unslipped	Achiotes	Conejito Red-on-Unslipped	Conejito	<a href="#">Conejito Red Unslipped</a>
	Sapote	Sapote Striated	Sapote	<a href="#">Pom Striated</a>
	Texcoco	Mogotes Alisado	Mogotes	
Texcoco Unslipped		Cuxu		
Paso Caballos Waxy	Sierra	Sierra Red	El Chuuk	
		El Pato Bichrome	El Pato	
		Altamira Fluted	Papaya	
		Laguna Verde Incised	Sahal	<a href="#">Pom Red Incised</a>
		Mito		
	Flor	Flor Cream	Flor	<a href="#">Pom Flor Cream</a>
	Polvero	La Vaca Bícromo	La Vaca	
	Boxcay	Boxcay Brown	Boxcay	<a href="#">Pom Brown</a>
El Chorro Bícromo		El Chorro		
Campo Verde	Campo Verde Resist	Campo Verde		
Usumacinta Unslipped	Quemadal	Quemadal Alisado	Quemadal	
		La Línea Incised	La Línea	
	Tornillo	Tornillo Striated	Tornillo	
El Macho Micaceous <sup>3</sup>	Pejelagarto (red)	Pejelagarto Red	Pejelagarto	<a href="#">Pejelagarto</a>
		Pasadota Incised	Pasadota	
		Cojolita Bícromo	Cojolita	

<sup>3</sup> In terms of surface finish, these types are almost identical to the analogous types in the carbonate tempered Paso Caballo ware. The major difference is in paste texture and composition. For example, Pasadota Incised is equivalent to Laguna Verde Incised. The major difference between the two lies in the paste. Types within the El Macho Micaceous group appear to be tempered with a micaceous material. Ceramics with the same temper have been found in the Late Classic sherds from the La Pasadita/Tecolote region suggesting that this ware may have some regional significance.

	Karst (cream)	Karst Cream	Karst		
		Ti Ha Incised	Ti Ha		
		Okol Incised	Okol		
	Selva Alta (black)	Selva Alta Black	Selva Alta		
		Jotil Incised	Jotil		
		Copal Bícromo	Copal		
	Nespa (orange)	Nespa Orange	Nespa		
		Izcan Incised	Izcan		
	Boca del Cerro	Boca del Cerro Brown	Boca del Cerro		
	Aguaseca	Aguaseca Resist	Aguaseca		
	Petén Gloss	Aguila	Aguila Orange	Menche	
			Virgilio Bícromo	Tiloom	
Buj Incised			Buj		
Ixcanrio Orange Polychrome			VU	<a href="#">Ixcanrio Orange Polychrome</a>	
Undesig. Incised A			VU		
Undesig. Orange A			VU		
Pucte		Ka Incised	Tun		
		Eco Brown	Eco		
Dos Arroyos		Otatal Orange Polychrome	Otatal		



### ***The Naba Ceramic Phase (A.D. 350–A.D. 560)***

Early Classic ceramics are known from every sector of the site, including the Acropolis, residential groups in all areas of the site core, and residential groups outside the site core. In many cases, the Naba phase ceramics are found immediately above bedrock and mark the initial construction of a large number of monumental structures.

The great typological similarity between the Piedras Negras Early Classic ceramics and Early Classic materials known from elsewhere in the Maya Lowlands sites provides the principle means for dating the Naba ceramic phase. The appearance of Petén Gloss Wares and distinctive vessel modes (e.g. basal flanges, hollow conical supports, and bolstered rims) indicate that Naba is roughly equivalent in time to Tzakol 2 and Tzakol 3 assemblages known from elsewhere. This estimate agrees with absolute dates derived from inscriptions associated with Early Classic architecture in the South Group Court, and with a carbon date derived from a late Early Classic termination found in Acropolis (Golden 2002).

Orange monochromes (Aguila Orange) dominate Naba assemblages, though monochrome blacks (Balanza Black) and browns (Pucte Brown) are also common. Fluting and incising are common decorative modes, though some examples of carved or gouged decoration are known. In general, these are indistinguishable from analogous types, such as Lucha Incised and San Clemente Gouged-Incised, found elsewhere. The major feature differentiating the Naba assemblages from Early Classic assemblages elsewhere is the absence of ring base, basal flange bowls. Instead, shallow dishes with hollow conical tripod supports and a basal ridge are the most common plate forms. The type most commonly associated with basal flange bowls, Dos Arroyos Orange Polychrome, is exceedingly rare at Piedras Negras. Given the high typological similarity with Early Classic assemblages known from elsewhere in the Petén, the absence of Dos Arroyos and the related plate form is difficult to explain.

Naba Ceramic Phase (A.D. 350–A.D. 560)				
Ware	Group	Type	Variety	Figure
Uaxactún Unslipped	Texcoco	Texcoco Unslipped	Texcoco	<a href="#">Texcoco Smooth</a> <a href="#">Texcoco Smooth</a>
			Temper Drag	<a href="#">Temper Drag</a>
			Hombro Impreso	
		Ojo Negro Applique	Ojo Negro	
	Trebol Applique	Trebol		
	Gardunza	Gardunza Striated	Gardunza	<a href="#">Gardunza Striated</a>
		Finger Impressed	<a href="#">Gardunza: Finger Impressed</a>	
Petén Gloss	Balanza	Balanza Black	Yonal	<a href="#">Balanza</a>
		Lucha Incised	VU	
		Paradero Fluted	Paradero	
		<a href="#">Urita Gouged-Incised</a>	<a href="#">Urita</a>	<a href="#">Urita Gouged-Incised</a>
		San Roman Plano-Relief	San Roman	
	Pucte	Pucte Brown	K'an	<a href="#">Pucte Brown</a>
		<a href="#">Ka Incised</a>	<a href="#">Ka</a>	<a href="#">Ka Incised: Ka</a>
		Chiclero Fluted	Chiclero	<a href="#">Pucte Plate</a>
		Contrabandista Gouged-Incised	Contrabandista	<a href="#">Contrabandista Gouged-Incised</a>

Aguila	Aguila Orange	Nemegue	<a href="#">Aguila Bowl</a>
	Xatero Fluted	Xatero	<a href="#">Xatero Fluted</a>
	Virgilio Bicromo	Virgilio	
	Xab Incised	Xab	
	Buj Incised	Buj	
	San Clemente Gouged-Incised	VU	<a href="#">San Clemente Gouged-Incised</a>
	Pococalado Plano-Relief	Pococalado	<a href="#">Pococalado Plano-Relief</a>
	Undesig. Bichrome Incised	VU	<a href="#">Undesig. Bichrome Incised</a>
Matutino	Yaloche Cream Polychrome	VU	<a href="#">Yaloche Cream Poly. Yaloche</a>
	Undesig. Cream Incised	VU	<a href="#">Undesig. Cream Incised</a>
	Undesig. Cream Resist	VU	<a href="#">Undesig. Cream Resist</a>
	Undesig. Grooved-Incised	VU	
Tzak	Tzak Polychrome	Tzak	<a href="#">Tzak</a>
	Eq Red-on-Orange	Eq	<a href="#">Eq Red-on-Orange</a>
Otatal	Otatal Orange Polychrome	Otatal	
		Garza Gorda	<a href="#">Otatal: Garza Gorda</a>
		VU	
Dos Arroyos	Dos Arroyos Orange Polychrome	VU	



### ***The Balche Ceramic Phase (A.D. 560–A.D. 620)***

Balche ceramics have been found in 21 locations across the site, unmixed and in good stratigraphic context with both earlier and later materials. In many cases, Balche phase ceramics are associated with the major renovation of existing structures. A very clear example of this process was the two meters of mixed Naba and Balche materials excavated from the northern end of the West Group Court (Escobedo 1997). This fill likely represents the expansion of the West Group Court in preparation for the construction of Str. K-5-3rd.



Distinct features of Balche phase assemblages include the use of specular hematite, the use of painted glyphs or pseudoglyphs, and the use of a true resist technique for decorating polychrome vessels. Though the precise technique by which resist was achieved is unknown, it does appear to have required multiple applications of slip and resist. In most cases, this consisted of an initial dark orange slip resisted against a cream under-slip, the additional application of resisting material and a light orange slip, and finally the application of positively applied black paint. Mataculebra Cream Polychrome, Moro Orange, and Suktan Cream Polychrome are the most common types utilizing this decorative technique.

In addition to the resist polychromes, few positive painted types typologically related to Palmar/Saxche groups are common at Piedras Negras. In comparison to Palmar/Saxche ceramics from other Classic Maya sites, the examples from Piedras Negras demonstrate a remarkably limited range of palettes and motifs. The impression gained from this as well as from the distribution of resist decorated ceramics is one of increasing separation from Petén modes, and the development of a unique regional style.

<b>Balche Ceramic Phase (A.D. 560–A.D. 620) (<a href="#">Balche Lot</a>)</b>				
<b>Ware</b>	<b>Group</b>	<b>Type</b>	<b>Variety</b>	<b>Figure</b>
	Texcoco	Texcoco Unslipped	Texcoco	
			Temper Drag	
			Filo	
			Hombro Impreso	<a href="#">Hombro Impreso</a>
	Portal	Portal Alisado	Portal	
			Metzaboc	
	Gardunza	Gardunza Striated	Gardunza	
			Finger Impressed	
	Encanto	Petate Striated	Petate	
	Petén Gloss	Balanza	Balanza	Balanza
Lucha Incised			VU	
Urita Gouged-Incised			Urita	
Paradero Fluted			Paradero	
Bos		Bos Black	Bos	
Pucte		Chico Brown	Chico	
			Pálido	
Aguila		Aguila Orange	Mehen	
			Virgilio Bícromo	Virgilio
			Xatero Fluted	Xatero
			Buj Incised	Buj
			Durazno Red-on-Orange	Durazno

		Undesig. Incised	VU	
Otatal		Otatal Orange Polychrome	Garza Gorda	<a href="#">Otatal: Garza Gorda</a>
		Chol Orange Polychrome	Chol	
Tzak		Eq Red-on-Orange	Eq	
		Tzak Polychrome	Tzak Ruby	<a href="#">Tzak Polychrome</a>
Palmar		Saxche Orange Polychrome	Saxche	<a href="#">Saxche: Saxche</a>
			VU	<a href="#">Saxche: VU</a>
			Interior-Exterior	<a href="#">Saxche: Interior-Exterior</a>
			Reserve-Resist	<a href="#">Saxche: Reserve-Resist</a>
Matutino		Sai Red-on-Cream	Sai	
		Bethel Bícromo-Incised	Bethel	
Santa Rosa		Mataculebra Cream Polychrome	Mataculebra	<a href="#">Mataculebra: Mataculebra</a>
			Interior-Exterior	<a href="#">Mataculebra: Interior-Exterior</a>
		Porvenir Cream Polychrome	Porvenir	<a href="#">Porvenir and Playona Polychrome</a>
		Playona Cream Polychrome	Playona	
		Moro Orange Polychrome	Moro	<a href="#">Moro Polychrome</a>
	Finger Nail Impressed			



### ***The Yaxche Ceramic Phase (A.D. 620–A.D. 750)***

Yaxche ceramics have been found in large quantities in all areas of the site, including the peripheral residential groups, in sealed contexts, below inarguably later (Chacalhaaz) materials, and in association with dated monuments. Large lots of unmixed Yaxche phase material were found in several locations across the site including a residential group located just below the Acropolis (Arredondo 1998), a residential group located in the southern end of the site (Romero 1999), and a residential group located west of the Acropolis (Op. 46, Golden 2002).

Though many forms in use at Piedras Negras during this time are similar to forms utilized in the Central Petén, surface decoration is becoming increasingly differentiated from decorative modes found elsewhere in the Maya area. At other Maya sites, positive painting is the primary polychrome decorative mode. At Piedras Negras, however, resist decoration almost completely replaces positive painting as the primary polychrome mode. Santa Rosa Cream Polychrome is the most common resist type at this period, though it is only one of several resist types known from the site. Other resist decorated types include Mataculebra Polychrome, Suktan Cream Polychrome, Lemba Polychrome, and Yokib Incised-Resist.

Positive painted polychromes occur in Yaxche, but are generally a minority type. Common positive painted polychrome types include Saxche and Palmar Orange Polychromes, Coabano Red-on-Orange and Guadua Orange Polychrome. The most common decorative motif consists of bands of pseudoglyphs framed by red and black lines. Other diagnostic positive painted polychrome designs include geometric designs including the use of Tlaloc or year signs motifs on the interiors of shallow plates.

Finally, it is important to note the examples of Chablekal Fine Gray pottery are occasionally found in Yaxche contexts, though much more frequent in later, Chacalhaaz contexts. Chablekal Fine Gray appears in the Palenque region no earlier than about A.D. 730. Given this, it seems reasonable to conclude Chablekal ceramics did not enter Piedras Negras prior to about A.D. 750. After this time, the use of resist decoration becomes less common. This shift in decorative technique, along with changes in decorative motif, marks the end of the Yaxche ceramic phase.

Yaxche Ceramic Phase (A.D. 620–A.D. 750)					
Ware	Group	Type	Variety	Figure	
Uaxactún Unslip.	Portal	Portal Unslipped	Portal		
			Arrastre		
	Texcoco	Texcoco Unslipped	Filo		
	Encanto	Petate Striated	Petate		
Petén Gloss	Bos	Bos Black	Bos		
		Tepocate Bichrome	Tepocate		
		Undesig. Black Fine Line Inc.	VU	<a href="#">Yaxche Black Fine Line Incised</a>	
	Kanche	Kanche Brown	Kanche	Kanche	
			Luum		
			Chencheha Incised	Chencheha	<a href="#">Chencheja Incised</a>
			Undesig. Brown Carved	VU	<a href="#">Yaxche Brown Carved</a>
	Uvalas	Uvalas Red-Orange	Uvalas		
			Dicroma		
			Gallina		
	Tinaja	Anaite Red	Anaite		
			Pachyra	<a href="#">Pachyra</a>	

			<a href="#">Pachyra, Exterior</a>
	Tinaja Red	Matte	
	Tinaja Red	Tractor	
Saraguate	Saraguate Orange	Búho	
		Saraguate	
		Estriada	
	Coabano Red-on-Orange	Coabano	<a href="#">Coabano Pot</a> <a href="#">Coabano</a>
Undesig. Monochrome Inc.	VU		
Santa Rosa	Santa Rosa Cream Poly.	Horqueta	<a href="#">Santa Rosa: Horqueta</a> <a href="#">Santa Rosa: Horqueta</a>
		Negra	<a href="#">Santa Rosa: Negra</a>
		Interior-Exterior	<a href="#">Santa Rosa: Interior-Exterior</a>
	Yokib Incised Resist	Yokib	<a href="#">Yokib Incised</a>
	Suktan Cream Polychrome	Suktan	<a href="#">Suktan: Suktan</a> <a href="#">Suktan Plates</a>
VU		<a href="#">Suktan: VU</a>	
Palmar	Saxche Orange Polychrome	Saxche	<a href="#">Saxche: Saxche</a>
		VU	<a href="#">Saxche: VU</a>
	Guadua Orange Polychrome	Guadua	<a href="#">Guadua Orange Polychrome</a>
	Palmar Orange Polychrome	Palmar	<a href="#">Palmar: Palmar</a>
		Resist-Reserve	<a href="#">Palmar: Resist-Reserve</a>
Alas	<a href="#">Palmar Polychrome: Alas</a>		
Ahk	Ahk Incised	Ahk	
	Pacal Incised	Pacal	<a href="#">Pacal Incised</a>
	Nacimiento Incised	Nacimiento	<a href="#">Nacimiento Incised</a> <a href="#">Nacimiento Incised</a>
	Undesig. Red and Black on Cream	VU	<a href="#">Undesig. Red and Black on Cream</a>
	Undesignated Fine Line Incised	VU	



### ***The Chacalhaaz Ceramic Phase (A.D. 750–A.D. 850)***

The Chacalhaaz ceramic phase lasts from approximately A.D. 750 to A.D. 850. Chacalhaaz ceramics are found in great quantities in all areas of the site, including every peripheral residential group excavated (Amy Kovak, personal communication 2002). Chacalhaaz is defined by major reduction in the frequency of resist decorated ceramics and an increase in the frequency of positive painting. The most common decorative motif consists of vertical red bars on the exteriors of shallow plates with and without tripod supports. A few examples of vessels decorated in this way have painted designs on their interiors. One particularly well-preserved example is decorated with a leaping fish. It seems likely that many more examples of this type, Bolonchac Orange Polychrome, were decorated with interior designs. However, these are often eroded beyond recognition through use or post-depositional processes.

Another diagnostic motif is the use of a monkey, typically seated, with an arm outstretched and palm upturned on the exteriors of large serving vessels. The origin of this motif is unknown, but it may be related to the decoration found incised on the exteriors of some Chablekal Fine Gray vessels. The frequency of appearance of this and related fine paste types serves as the third major diagnostic for the Chacalhaaz ceramic phase.

Between Yaxche and Chacalhaaz, there is a clear increase in vessels size. During Chacalhaaz serving, storage, and cooking vessels increase dramatically in size and are more heavily built than functionally equivalent forms in the preceding phase. This change in vessel size is accompanied by other important changes in vessel form. These include the appearance of incurving basin with bolstered rims, straight-sided basins with triangular rims, bowls with out-curving walls, and shallow, unslipped plates resembling comales.

Tres Naciones Fine Gray and Fine Orange appear at Seibal no later than about A.D. 830. At Piedras Negras, the appearance of these types marks the end of the Chacalhaaz ceramic phase and the beginning of the Terminal Classic Kumche phase. Given Piedras Negras peripheral location, it is likely that Tres Naciones and Altar group

fine pastes arrived no earlier than about A.D. 850. Their appearance at the site marks the end of Piedras Negras as a regional power.

Chacalhaaz Ceramic Phase (A.D. 750–A.D. 850)					
Ware	Group	Type	Variety	Figure	
Uaxactún Unslip.	Cambio Unslipped	Portal Unslipped	Portal	<a href="#">Chacalhaaz Alis. Basins</a>	
			Chichic	<a href="#">Portal: Chichic</a>	
		Miseria Applique	Spiked	<a href="#">Miseria: Spiked</a>	
			Hollow Handle		
		Granizo Unslipped	Granizo		
		Metzaboc Unslipped	Metzaboc		
		Pantano Impressed	Pantano	<a href="#">Pantano Impressed</a>	
		Sargento Red-on-Unslipped	Sargento	<a href="#">Sargento Red-on-Unslipped</a>	
	Undesig. Mold./Modeled	VU	<a href="#">Frog Head</a>		
Encanto	Encanto Striated	Encanto	<a href="#">Chacalhaaz Striated Basin</a>		
Petén Gloss	Tinaja	Tinaja Red	Tinaja		
			Leche		
			Tractor	<a href="#">Tinaja Striated, Exterior</a> <a href="#">Tinaja Striated, Interior</a>	
			Siguan	<a href="#">Tinaja: Siguan</a>	
	Chub	Perlas Red-Orange	Perlas		
			Chub		
			Subida	<a href="#">Subida Cache</a>	
			VU		
			Isleta Fluted	Isleta	
				Modeled Rim	
			Chancala Modeled	Chancala	<a href="#">Chancala Modeled</a>
			Diamante Red-on-Orange	Diamante	<a href="#">Diamante</a>
			Undesig. Mono Orange Inc.	VU	<a href="#">Orange Mono Incised</a>
			Cañon Modeled-Carved	Cañon	
	Undesig. Chac. Glyph Inc.	VU	<a href="#">Glyph Incised</a>		
	Pai	Pai Black	Pai		
			Tenamaste		
		Chilar Fluted	Chilar		
		Keh Fluted	Keh		
		Cantil Incised	Cantil	<a href="#">Cantil</a>	
		Jato Black-on-Gray	Jato	<a href="#">Jato Black-on-Gray</a>	
		El Bosque Simple Incised	Bosque	<a href="#">El Bosque</a>	
	Undesig. Black Molded	VU			

Buu	Buu Brown	Buu	<a href="#">Buu</a>
		Pinto	
		Striated	<a href="#">Buu: Striated, Exterior</a>
	Mal Amigo Zoned Fluted	Mal Amigo	
	Hormiga Grooved	Hormiga	
		Chevron	
	Raudel Fluted	Raudel	
		Modeled Rim	
Budsilha Punctate-Incised	Budsilha	<a href="#">Budsilha</a>	
Libertad Incised	Libertad	<a href="#">Libertad</a>	
Pachanga Incised	Pachanga		
Chinche	Bolonchac Orange Poly.	Bolonchac	<a href="#">Bolonchac</a>
		Interior Slipped	<a href="#">Interior Slipped</a>
		Guapaque	<a href="#">Guapaque</a>
		Smudged Interior	<a href="#">Smudged</a>
	Hutzijan Polychrome	Hutzijan	<a href="#">Hutzijan</a> <a href="#">Hutzijan, Interior</a>
	Chacalha Orange Polychrome	Chacalha	<a href="#">Chacalha Polychrome</a>
	Chinche Orange Polychrome	Chinche	
Buhtil Orange Polychrome	Buhtil	<a href="#">Buhtil Polychrome</a>	
	Cedrillo		
Pirueta Orange Polychrome	Pirueta	<a href="#">Pirueta Polychrome</a>	
Palmar	Palmar Orange Polychrome	Palmar	<a href="#">Palmar: Palmar</a>
Santa Rosa	Santa Rosa Cream Poly.	Horqueta	
		Negra	<a href="#">Negra</a>
		Interior-Exterior	<a href="#">Interior-Exterior</a>
	Lemba Cream Polychrome	Lemba	<a href="#">Lemba: Lemba</a>
Suktan Cream Polychrome	Suktan	<a href="#">Suktan Plates</a>	
Zacatel	Chinos Black-on-Cream	VU	<a href="#">Chinos: VU</a>
	Zacatel Cream Polychrome	VU	<a href="#">Zacatel</a>
	Tres Champas Red-on-Cream	Tres Champas	<a href="#">Tres Champas</a>
	Undesig. Cream Polychrome	VU	
Chablekal <sup>4</sup>	Chablekal Fine Gray	Chablekal	
	Telchac Composite	Telchac	<a href="#">Telchac Composite</a>
	Chicxulub Incised	Chicxulub	<a href="#">Chicxulub</a> <a href="#">Chicxulub</a>
	Cholul Fluted	Cholul	<a href="#">Cholul Fluted</a>

<sup>4</sup> This represents an incomplete listing of the Chablekal type and varieties. A more complete listing will be presented in Rands' forthcoming volume on the Palenque region fine pastes.



### ***The Kumche Ceramic Phase (A.D. 850–A.D. 900?)***

Kumche is the final ceramic complex at Piedras Negras and marks the complete abandonment of the site. The beginning of the Kumche ceramic phase is marked by the introduction of Tres Naciones Fine Gray and Altar Fine Orange types into the site around A.D. 850. The absence of succeeding occupation makes dating the end of this phase exceptionally difficult. Given the quantities and distribution of Kumche ceramics, the virtual absence of construction, and the very low quantities of Post Classic ceramics recovered, it seems likely that only 50 to 75 years passed before Piedras Negras was completely abandoned. The occasional presence of Post Classic ceramics indicate that after about A.D. 900–925 Piedras Negras was visited only occasionally by pilgrims or others passing through the region.

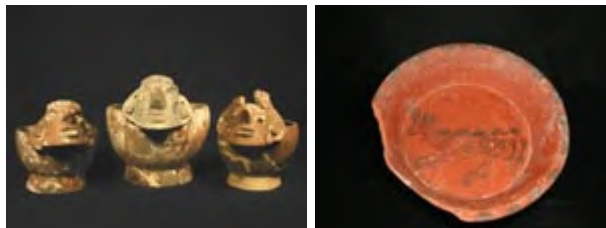
Most Kumche polychromes are poorly preserved, though Bolonchac Orange Polychrome seems to be the most common type. No polychromes equivalent to the Terminal Classic types known from elsewhere in the Petén, such as Lombriz Orange Polychrome (Adams 71:39), are recognized at Piedras Negras. Altar and Tres Naciones fine pastes are, by far, the most diagnostic elements of Kumche assemblages. Their presence, however, in a number of terminal middens (e.g. op 46j, Golden 2002), allowed the identification of a number of formal and decorative modes that allowed the identification of Kumche deposits independent of the presence or absence of fine paste ceramics.

Diagnostic forms include basins with triangular rims and near vertical walls, hollow, zoomorphic supports and/or notched basal ridges on shallow plates, hollow zoomorphic censer elements, and everted and grooved rims on unslipped utility forms, slipped bowls with out-curved walls are common diagnostic. In addition, shallow plates with out-curved walls and cylindrical or spherical supports are also diagnostic of the Kumche phase. The frequent use of smudging to darken the interior of serving vessels, an increased frequency of abstract geometric motifs on the interior of serving dishes, and the use of parallel rows of incised lines on the exteriors bowls all serve as Kumche diagnostic. Finally, it is important to note that a distinctive change in paste color and texture also serve to mark the Kumche phase. The paste of a large percentage of Kumche phase vessels is significantly redder and tempered and has a much finer



carbonate temper than present in vessels manufactured during prior phases. The reasons for this shift are unclear, but may be related to an attempt to replicate the fine paste pottery entering the site at this time.

Kumche Ceramic Phase (A.D. 850–A.D. 900?)					
Ware	Group	Type	Variety	Figure	
Uaxactún Unslipped	Cambio	Portal Alisado	Sotz		
			Chichic		
	Encanto	Petate Striated	Quinil	<a href="#">Striated Exterior</a> <a href="#">Striated Interior</a>	
		Undesig. Fine Line Inc.	VU	<a href="#">Fine Line Incised</a>	
Petén Gloss	Tinaja	Tinaja Red	Tinaja		
			Tractor		
	Chub	Chub Orange	Chub		
			Perlas Red-Orange	Perlas	
			Undesig. Grooved	VU	<a href="#">Kumche Grooved</a>
	Pai	Pai Black	Pai		
			Tenamaste		
	Buil	Buil Brown	Buil		
			Pinto		
	Chinche	Bolonchac Orange Poly.	Bolonchac	<a href="#">Bolonchac, Exterior</a> <a href="#">Bolonchac, Interior</a>	
			Guapaque	<a href="#">Guapaque</a>	
			Interior-Smudged		
Interior-Slipped					
Fine Orange	Tres Naciones	Tres Naciones Fine Gray	VU		
	Altar	Altar Orange	Altar		
		Provincia Plano-Relief	Provincia	<a href="#">Provincia-Pabellon</a>	
		Pabellon Modeled-Carved	Pabellon		
		Cedro Gadrooned	Cedro		
		Trapiche Incised	Trapiche	<a href="#">Trapiche Incised</a>	



### ***The Post Classic***

The absence of clear Terminal Classic to Post Classic stratigraphy at Piedras Negras, makes it impossible to say with any precision when the Kumche ceramic phase ends. The majority of Post Classic materials from Piedras Negras was recovered by the University of Pennsylvania Project. The great majority of which consisted of "Lacandón" anthropomorphic censers found in the interiors of the South Group Court. The only possibly Post Classic material recovered by the BYU/Del Valle consisted of a pair plates cached beneath a collapsed wall of Str. P-7 (Child and Child 2002). These vessels have a fine dark orange to red paste and are clearly of non-local origin. The interiors of these vessels were decorated with crudely executed renditions of a caiman, and possibly of a bee. The exteriors of both dishes are decorated with an abstract geometric motif. The nearest analogs to these vessels are found at Chichén Itzá (Brainard 1958: Fig 84-85; Smith 1971: fig. 23r, s, t-v) and date to the Early Postclassic, where they are identified as a variety of Silho Fine Orange. A carved jade head inscribed with the name of a Piedras Negras Ruler was recovered from the cenote at Chichén Itzá and suggests some late, long-distance contact between the two sites.

<b>The Post Classic</b>				
<b>Ware</b>	<b>Group</b>	<b>Type</b>	<b>Variety</b>	<b>Figure</b>
Cambio Group	Cambio	Pedregal Modeled	Pedregal	<a href="#">Pedregal Modeled</a>
Silho	Silho	Silho Fine Orange	VU	<a href="#">Crocodile Plate</a>

### **Type List**

The narrative in each of the preceding sections was intended as a brief overview of the Piedras Negras sequence and as an introduction to the more substantial portion of this report: the presentation of the revised type list—shown in each respective section, and a

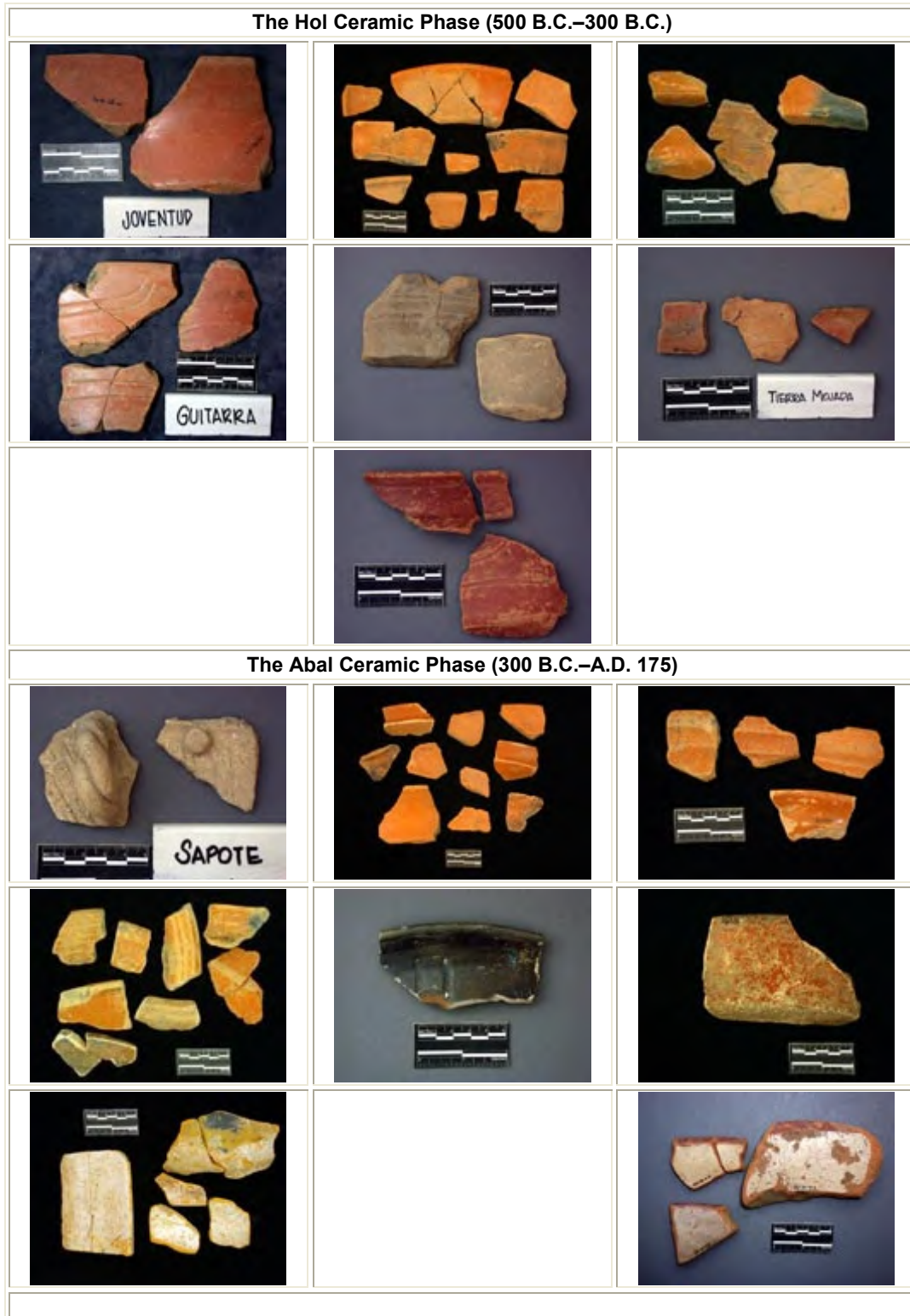
visual catalog of the ceramics. The visual catalog of ceramics is presented in the previous sections of this report with photographs linked, and as a table of thumbnail images in an upcoming section, [Table of Images](#). An effort has been made to select photos as representative of the types as possible. This is particularly the case with the Late Classic materials. Few illustrations of Preclassic and Early Classic ceramics from Piedras Negras are presented here—the majority of these ceramics are similar if not identical to the equivalent types from elsewhere in the Petén. When there are significant differences between the Piedras Negras types or varieties and those identified at other sites, an effort has been made to include the appropriate photographs.

## **Acknowledgements**

The permit for work at Piedras Negras came from the Instituto de Antropología e Historia de Guatemala, and the division of Monumentos Prehispánicos. I wish to thank the Defensores de la Naturaleza who, along with Consejo Nacional de Áreas Protegidas (CONAP) have helped to preserve the natural environment and cultural treasures of Piedras Negras. All research at Piedras Negras has been carried out as part of the Proyecto Arqueológico Piedras Negras, under the direction of Stephen D. Houston and Héctor L. Escobedo. The analysis of the Piedras Negras ceramics would not have been possible without the generous support of the Foundation for the Advancement of Mesoamerican Studies, Inc., (FAMSI) and the National Science Foundation. T. Patrick Culbert, Ron Bishop, Antonia Foias, Takeshi Inomata, Daniela Triadan, Don Forsythe, Robert Rands, Cassandra Bill, and Melanié Forne all generously contributed their time and expertise at different stages of the analysis, and the work benefited greatly as a result. Finally, I cannot thank enough those students of San Carlos and Del Valle universities who spent months labeling, weighing, counting, sorting, and gathering data on thousands of sherds. Without their help, the timely completion of this research would have been impossible. Those students, in no particular order, are Mary Jane Acuña, Griselda Pérez, Edwin Roman, Irene Palma, Ana Lucia Arroyave, Juan Carlos Melendez, Fabiola Quiroa, Orlando Moreno, Damaris Melendez, Paty Ambrosi, Claudia Valenzuela, Elisa Mencos, and Lillian Padilla.

## Table of Images

Click on images to enlarge.

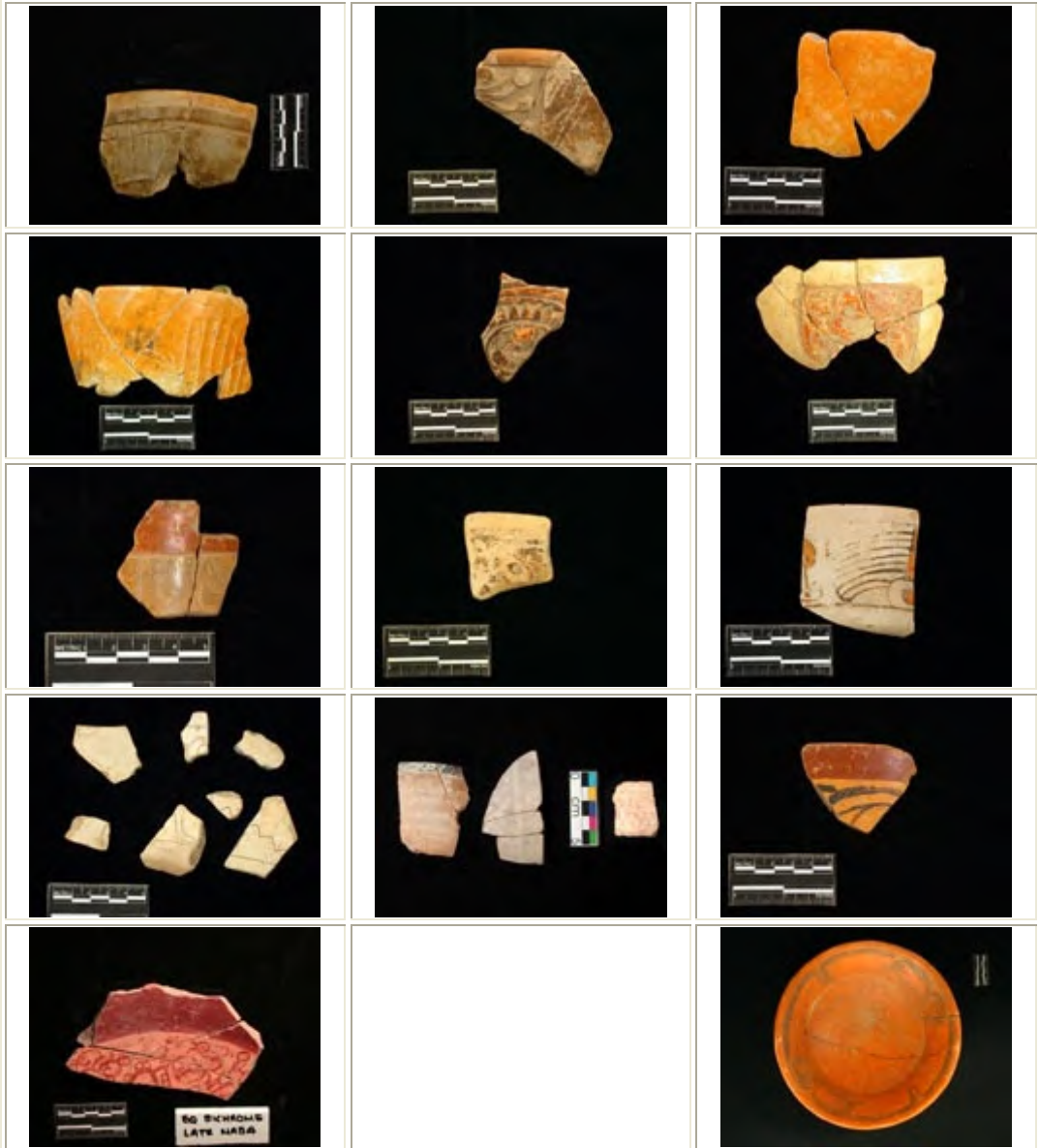


The Pom Ceramic Phase (A.D. 175–A.D. 350)

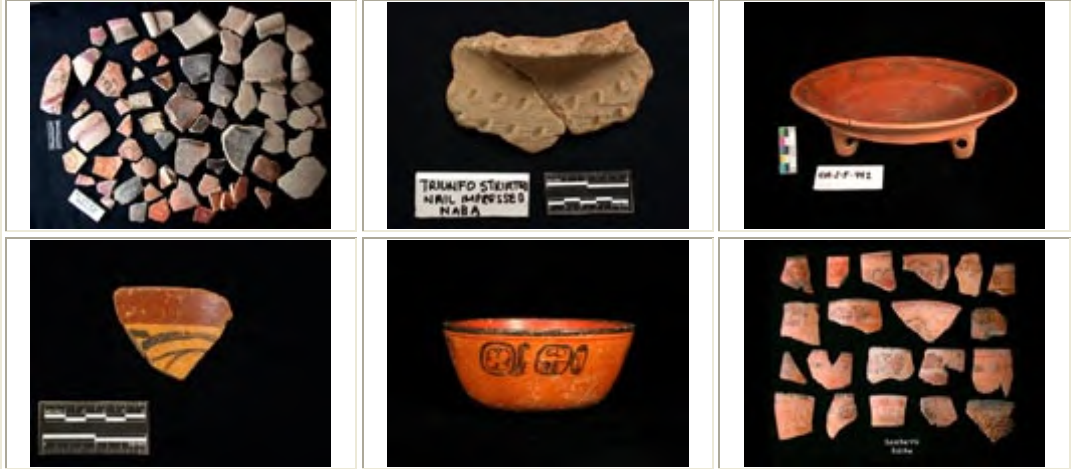


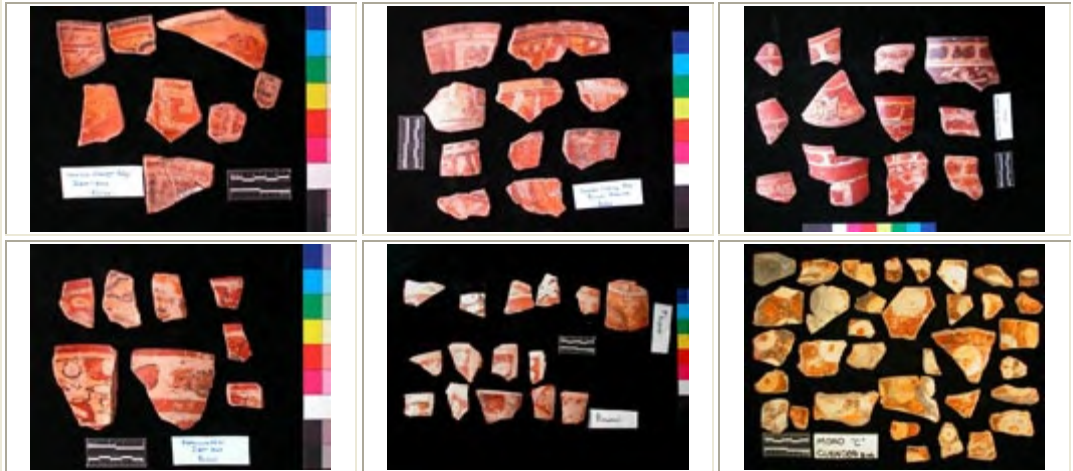
The Naba Ceramic Phase (A.D. 350–A.D. 560)



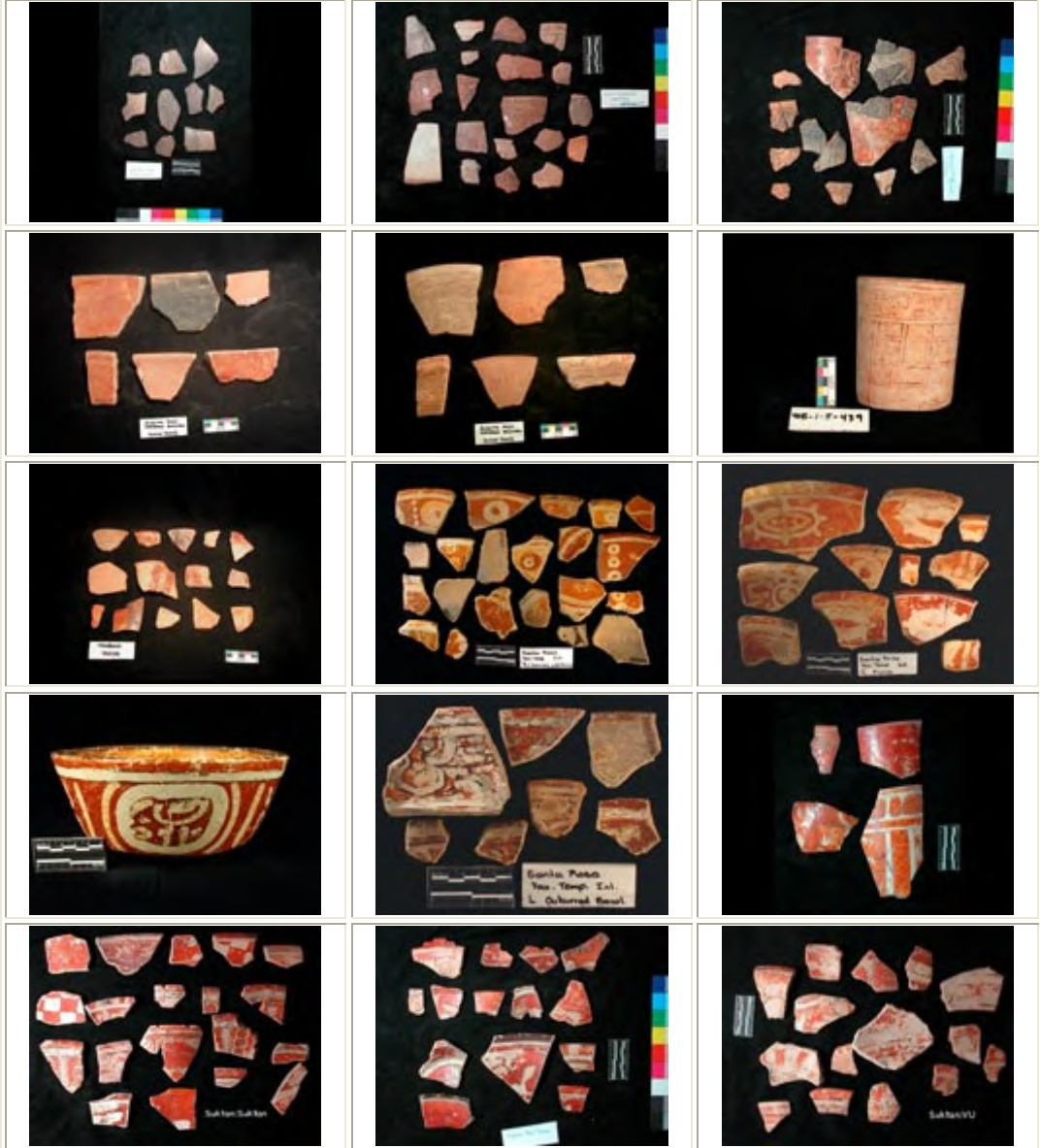


The Balche Ceramic Phase (A.D. 560–A.D. 620)



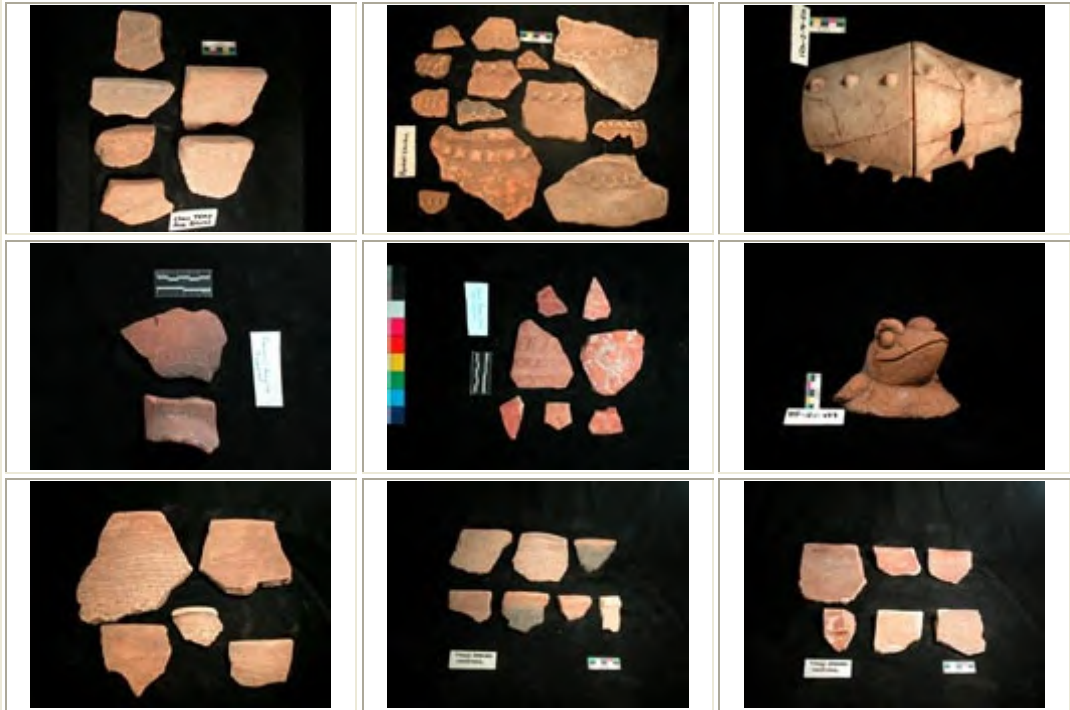


The Yaxche Ceramic Phase (A.D. 620–A.D. 750)

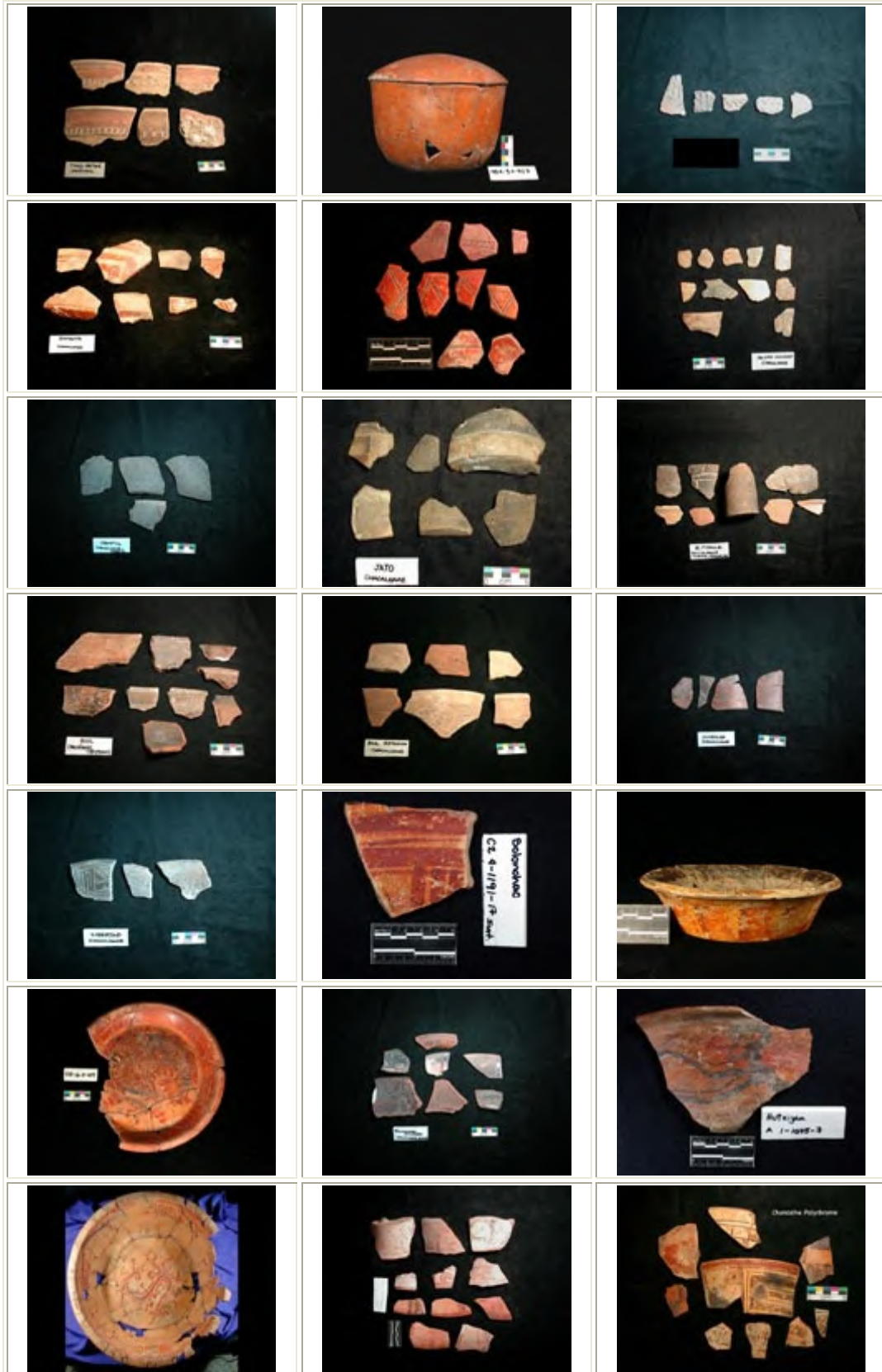




The Chalchahal Ceramic Phase (A.D. 750–A.D. 850)

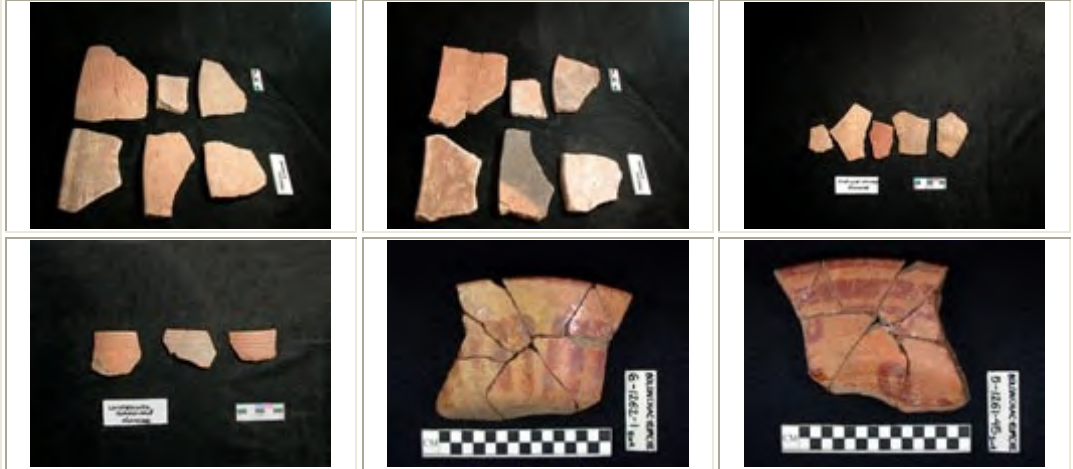


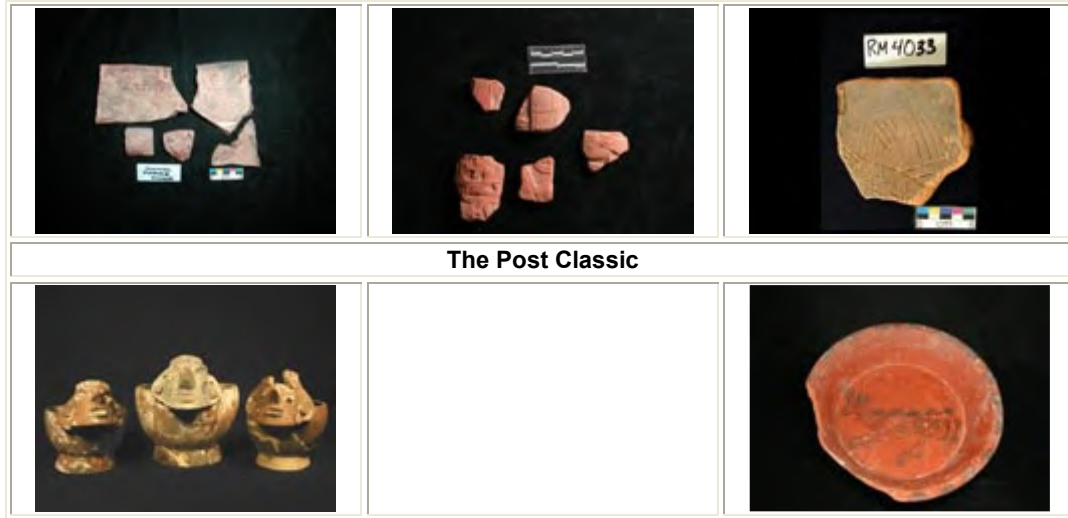






The Kumche Ceramic Phase (A.D. 850–A.D. 900?)





## Sources Cited

Acuña, Mary Jane

2004 *La Cerámica del Clásico Temprano de Piedras Negras, Guatemala*. Thesis presented to the Faculty of Anthropology, Universidad de San Carlos, Cd. Guatemala, Guatemala.

Adams, R.E.W.

1971 *The Ceramics of Altar de Sacrificios*. Papers of the Peabody Museum of Archaeology and Ethnology VI. 63, No.1, Cambridge.

Arredondo Leiva, E.

1998 "PN 24B: Excavaciones de Sondeo en el Área Habitacional de la Plaza del Grupo Oeste." In *Proyecto Arqueológico Piedras Negras Informe Preliminar No. 2: Segunda Temporada, 1998*, edited by H. Escobedo and S. Houston, pp. 135-142. Informe Preliminar Entregado al Instituto de Antropología e Historia, Cd. Guatemala, Guatemala.

Bachand, B.

1997 *Examination of a Ceramic Collection from Piedras Negras, Guatemala*. Unpublished Masters thesis, Department of Anthropology, Brigham Young University, Provo.

Butler, M.

1935 *Piedras Negras Pottery*. Piedras Negras Preliminary Papers 4. University Museum, Philadelphia.

Child, M. and J. Child

2001 "PN 5C: Excavaciones en el Baño de Vapor P-7." In *Proyecto Arqueológico Piedras Negras Informe Preliminar No. 4: Cuarta Temporada, 2000*, edited by H. Escobedo and S. Houston, pp. 1-6. Informe Preliminar Entregado al Instituto de Antropología e Historia, Cd. Guatemala, Guatemala.

Cresson, F.

1937 "Foot Forms of Pottery Vessels at Piedras Negras." In *25th Anniversary Studies: Philadelphia Anthropological Society*, edited by D.S. Davidson, pp. 37-46. University of Pennsylvania Press, Philadelphia.

Culbert, T.P.

1991 *Classic Maya Political History*. Cambridge University Press, Cambridge.

Escobedo, H.

1997 "Excavaciones de Sondeo en la Plaza del Grupo Oeste." In *Proyecto Arqueológico Piedras Negras: Informe Preliminar No. 1, Primera Temporada 1997*, edited by H. Escobedo, pp. 101-110. Informe Preliminar Entregado al Instituto de Antropología e Historia, Cd. Guatemala, Guatemala.

Golden, C.

2002 *Bridging the Gap Between Archaeological and Indigenous Chronologies: An Investigation of the Early Classic/Late Classic Divide at Piedras Negras, Guatemala*. Unpublished Dissertation, Department of Anthropology, University of Pennsylvania.

Holley, G.

1983 *Ceramic Change at Piedras Negras, Guatemala*. Southern Illinois University, Carbondale, Unpublished dissertation, Department of Anthropology.

1986 "The Ceramic Sequence at Piedras Negras, Guatemala." In *Cerámica de Cultura Maya* 14(1):49-72.

1987 "Living on the Edge: The Ceramic Sequence at Piedras Negras, Guatemala." In *Maya Ceramics: Papers from the 1985 Maya Ceramics Conference*, edited by P. Rice and R. Sharer, pp. 183-202. vol. 345, no.1. J. and E. Hedges, Oxford.

- Houston, S., H. Escobedo, M. Child, C. Golden, and A.R. Muñoz
- 2003a "Crónica de una Muerte Anunciada: Los Años Finales de Piedras Negras, Guatemala." In *Reconstruyendo la Ciudad Maya: El Urbanismo en las Sociedades Antiguas*, edited by A. Ciudad-Ruiz, J.I. Ponce de León and C.M. Martínez. Sociedad Española de Estudios Mayas, Madrid.
- 2003b "The Moral Community and Settlement Transformation Among the Classic Maya: Evidence from Piedras Negras, Guatemala." In *The Social Construction of Cities*, edited by M. Smith. Smithsonian Institution Press, Washington, D.C.
- Martin, S. and N. Grube
- 2000 *Chronicle of the Maya Kings and Queens: Deciphering the Dynasties of the Ancient Maya*. Thames and Hudson, London.
- Mason, J.A., L. Satherwaite, and M. Butler
- 1934 "The Work of the Eldridge R. Johnson Middle American Expedition of the University Museum, Philadelphia, at Piedras Negras, Petén, Guatemala." In *Maya Research* 1(1):30-36.
- Muñoz, A.R.
- 2000 "Análisis de Cerámica: Temporada de 1999." In *Proyecto Arqueológico Piedras Negras: Informe Preliminar No. 3, Tercera Temporada 1999*, edited by H. Escobedo, pp. 347-358. Informe Preliminar Entregado al Instituto de Antropología e Historia, Cd. Guatemala, Guatemala.
- 2001 "The Organization of Ceramic Production at Piedras Negras, Guatemala: Implications for Understanding Processes of Ceramic Change." Paper presented at the Annual Meeting of the Society for American Archaeology, New Orleans.
- 2002 "Análisis de Cerámica: Temporada de 2000." In *Proyecto Arqueológico Piedras Negras: Informe Preliminar No. 4, Cuarta Temporada 2000*, edited by H. Escobedo. Informe Preliminar Entregado al Instituto de Antropología e Historia, Cd. Guatemala, Guatemala.
- Muñoz, A.R. and J. Fitzsimmons
- 1998 "Análisis de Cerámica: Temporada de 1998." In *Proyecto Arqueológico Piedras Negras: Informe Preliminar No. 2, Segunda Temporada 1998*, edited by H. Escobedo. Informe Preliminar Entregado al Instituto de Antropología e Historia, Cd. Guatemala, Guatemala.

Muñoz, A.R. and C. Golden

- 2002 "Ceramic Innovation and Elite Competition at Piedras Negras Guatemala." Paper presented at the 100th Annual Meeting of the American Anthropological Association, Washington, D.C.

Rands, R.

- 1960 "Suggested Piedras Negras Ceramic Complexes." Unpublished ms. archived at the University Museum, University of Pennsylvania.

- 1961 "Piedras Negras Pottery Complexes." Unpublished ms. archived at the University Museum, University of Pennsylvania.

- 1967 "Cerámica de la Región de Palenque." In *Estudios de Cultura Maya* 6:112-147.

- 1973 "The Classic Maya Collapse: Usumacinta Zone and the Northwest Periphery." In *The Classic Maya Collapse*, edited by T.P. Culbert, pp. 165-206. School of American Research, Albuquerque.

Romero, L.

- 1999 "Excavaciones en las Estructuras R-18 and R-31." In *Proyecto Arqueológico Piedras Negras Informe Preliminar No. 3: Tercera Temporada: 1999*, edited by H. Escobedo and S. Houston, pp. 37-54. Informe Preliminar Entregado al Instituto de Antropología e Historia, Cd. Guatemala, Guatemala.

Smith, R.E.

- 1971 *The Pottery of Mayapan*. Papers of the Peabody Museum of Archaeology and Ethnology 66. Harvard University, Cambridge.

Stuart, D.

- 1998 "Una Guerra entre Yaxchilán y Piedras Negras?" In *Proyecto Arqueológico Piedras Negras Informe Preliminar No. 2: Segunda Temporada, 1998*, edited by H. Escobedo and S. Houston, pp. 289-392. Informe Preliminar Entregado al Instituto de Antropología e Historia, Cd. Guatemala.







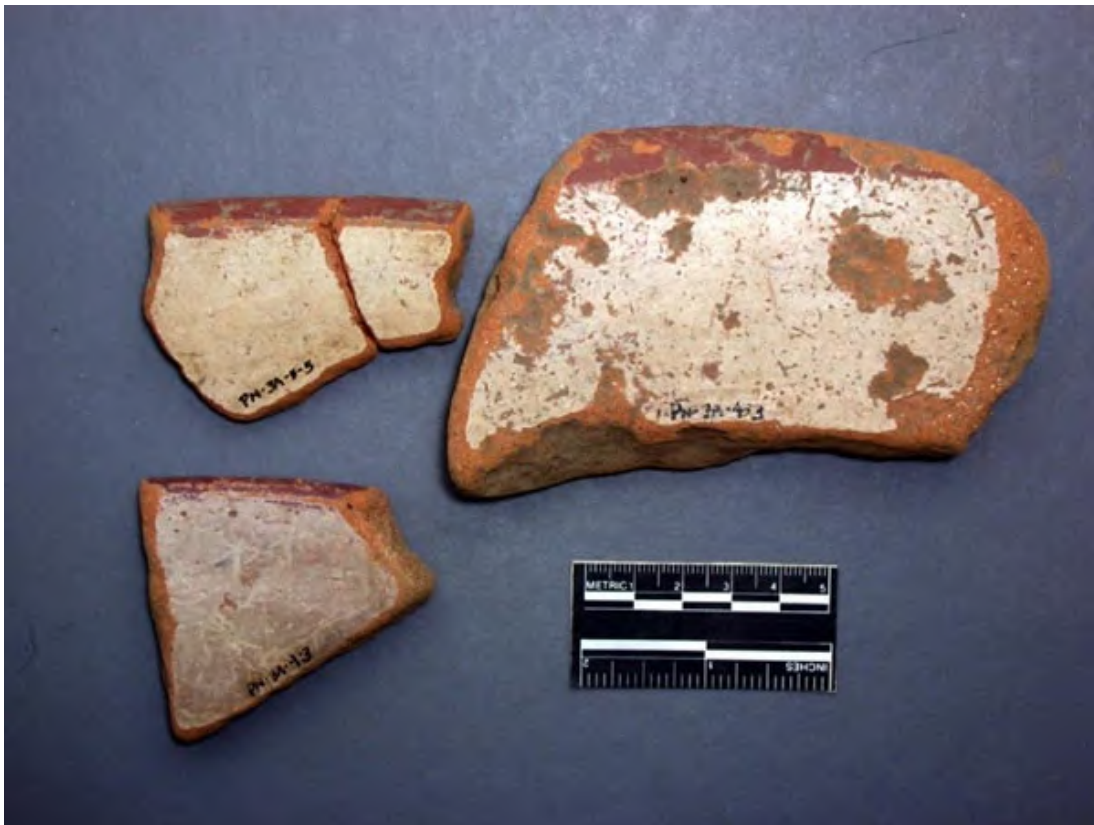












































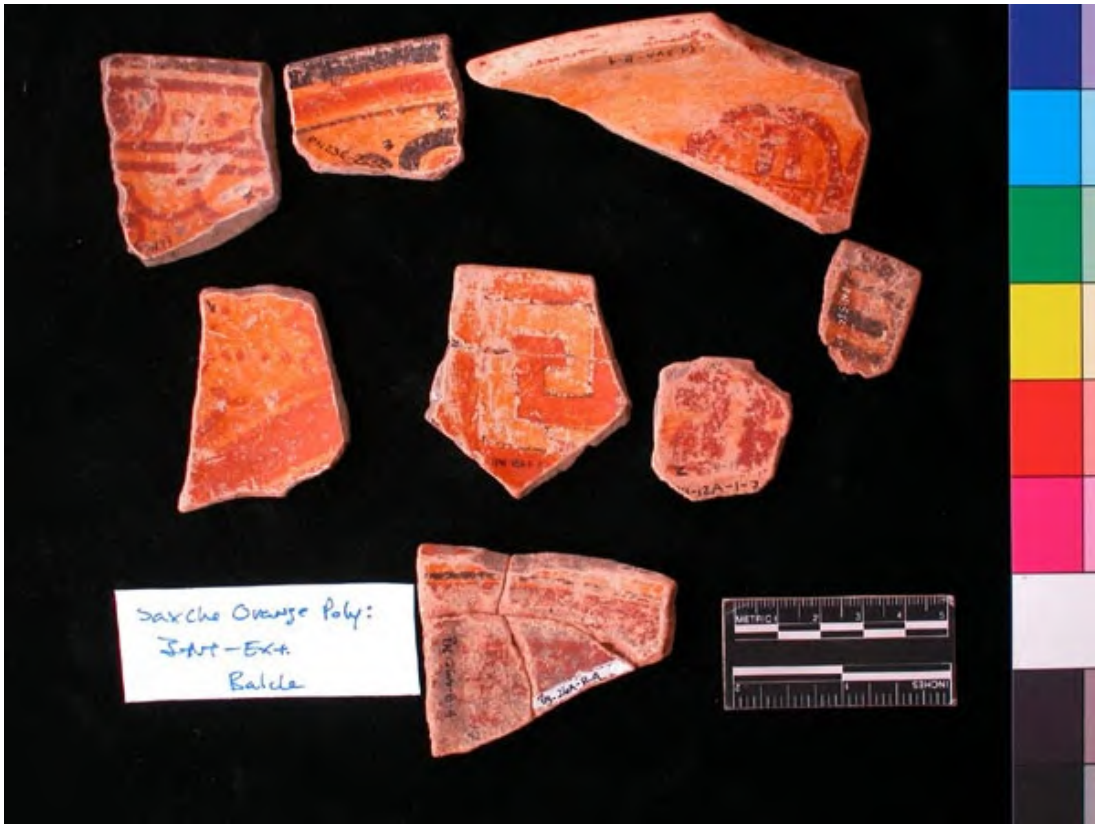


















Yax B'ala Frag  
Lino Inscribed













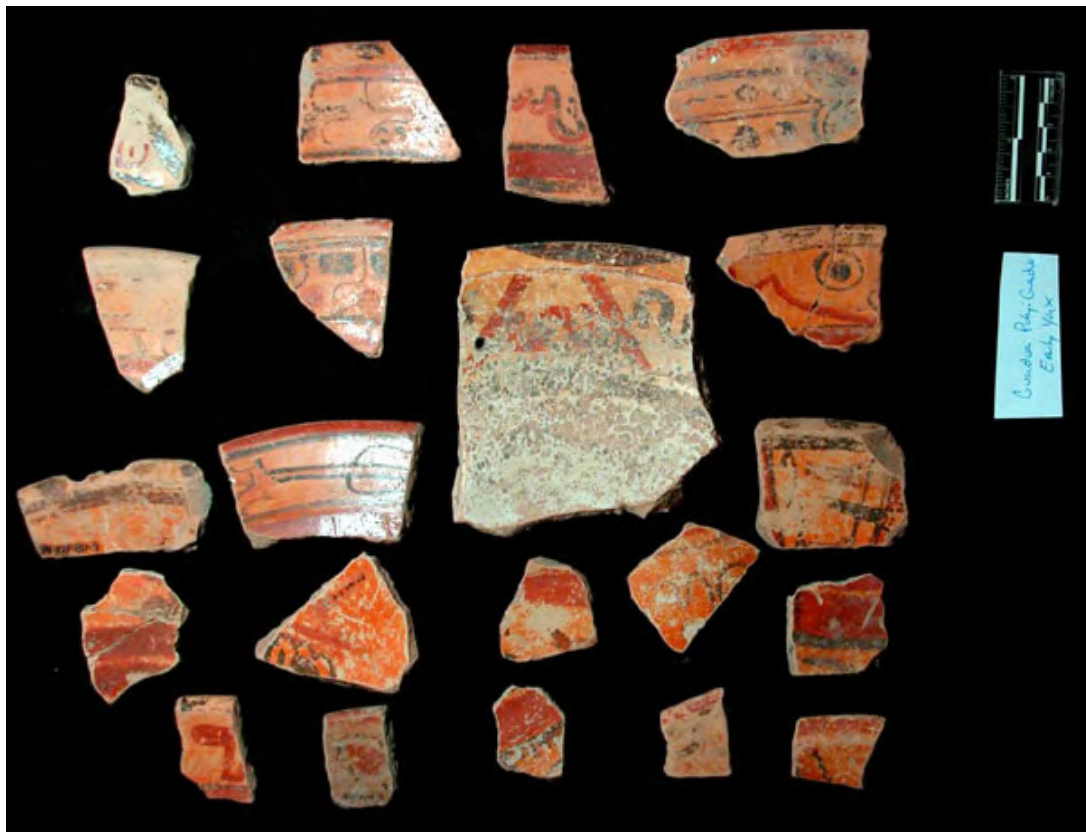


Santa Rosa  
Yax. Temp. Int.  
L Outcurved Bowl.











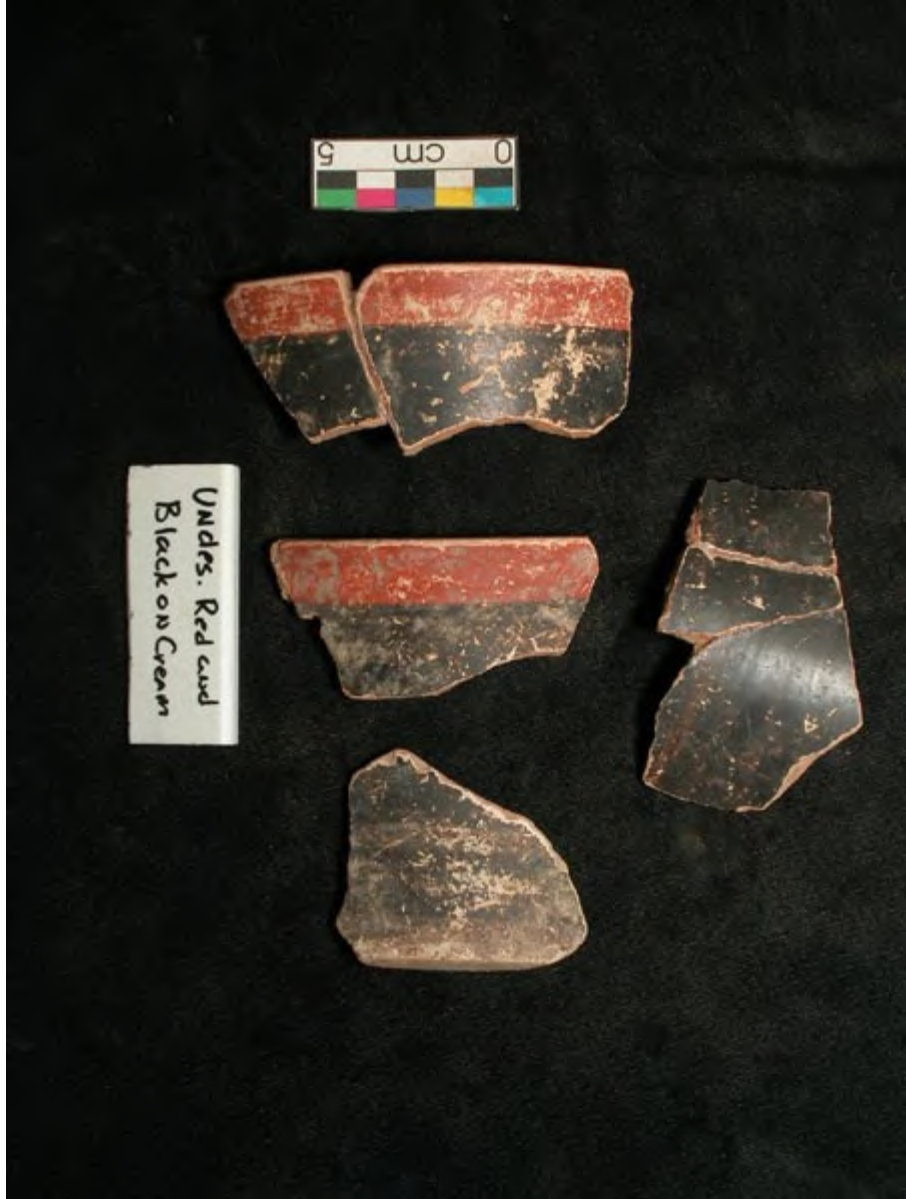


















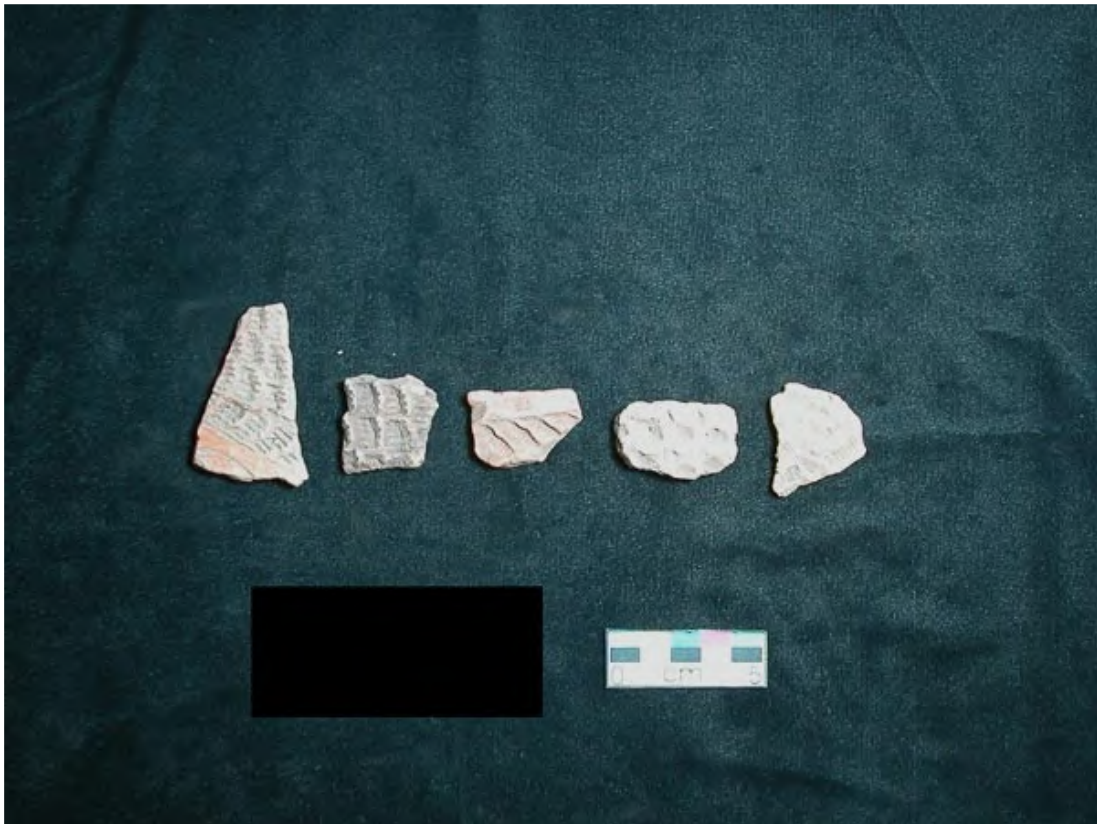
Pastano / Chaguisa  
Impressed















GLYPH INCISED  
CHACALMAEZ



















Chaco Ho, Fly, One  
Under, 3, Green, 1/12















TRES Champas  
Red-ink-Cross

RM 4004



RM 4030



RM 4027



RM 4017

















RM 4033



PM 5118





