

The Naranjo Rescue Project: New Data from the Preclassic Guatemala

List of Figures

- Figure 1. Map showing the location of Naranjo.
- Figure 2. Williamson's sketch map (From Williamson 1887).
- Figure 3. Photo by Muybridge of Monument 1 at Naranjo (From Burns 1986).
- Figure 4. Monument 28 photographed by Villacorta (1927).
- Figure 5. Edwin M. Shook's sketch map of Naranjo (From Universidad del Valle Shook archive).
- Figure 6. Naranjo topographic map.
- Figure 7. Photograph of different building episodes from Mound 1.
- Figure 8. Illustration showing North profile from Mound 1.
- Figure 9. Northern Platform photo.
- Figure 10. Dedicatory deposit on the Northern Platform showing sherds and ash.
- Figure 11. Hearth uncovered at the Northern Platform.
- Figure 12. Overall view of 13 stones located in the Northern Platform.
- Figure 13. Overall view of offerings found in the Northern Platform.
- Figure 14. Excavation of sweatbath near the Northern Platform.
- Figure 15. View of the Southern Platform.
- Figure 16. Surface on the Southern Platform.
- Figure 17. Deposits on the Southern Platform, carved inside sterile soil.
- Figure 18. Orange Coarse dish from Las Charcas phase.
- Figure 19. Stone alignment at the eastern base of the Southern Platform.
- Figure 20. Ceramic figurines recovered at the Southern Platform.
- Figure 21. Red on Buff ceramic fragment with early representation of G1.
- Figure 22. Red on Buff ceramic fragment with representation of Olmec dragon.
- Figure 23. View of Mound 2.
- Figure 24. Hector Neff surveying with GPR and magnetometer.
- Figure 25. Excavating the third line of monuments.
- Figure 26. View of the first line of monuments.
- Figure 27. Monument 3 and Altar 1.
- Figure 28. Illustration of monuments and floor associated to them.
- Figure 29. Photograph of Monument 27 showing carving.
- Figure 30. House floors located on the northern sector of Naranjo.
- Figure 31. Radiocarbon dates chart from Naranjo.

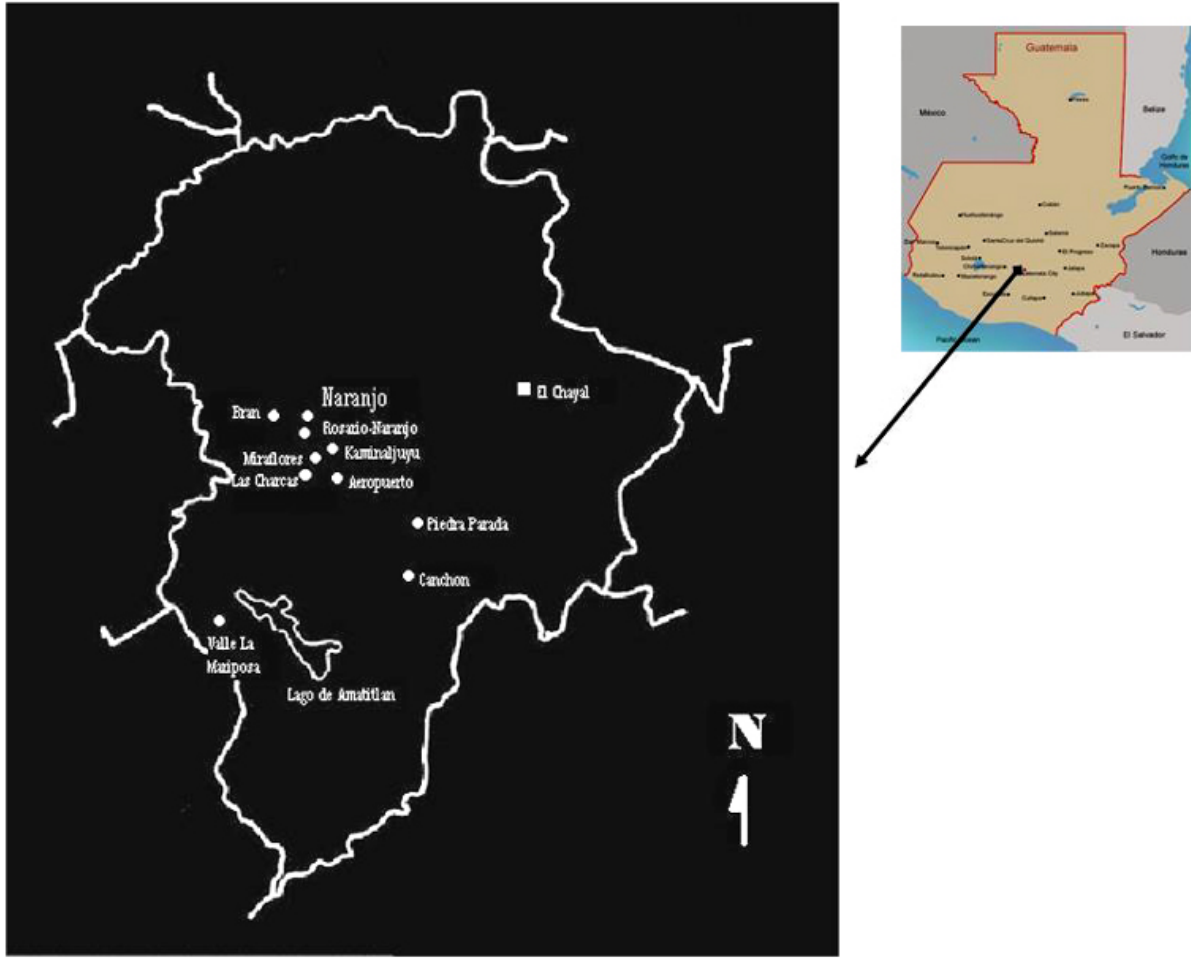


Figure 1. Map showing the location of Naranjo.

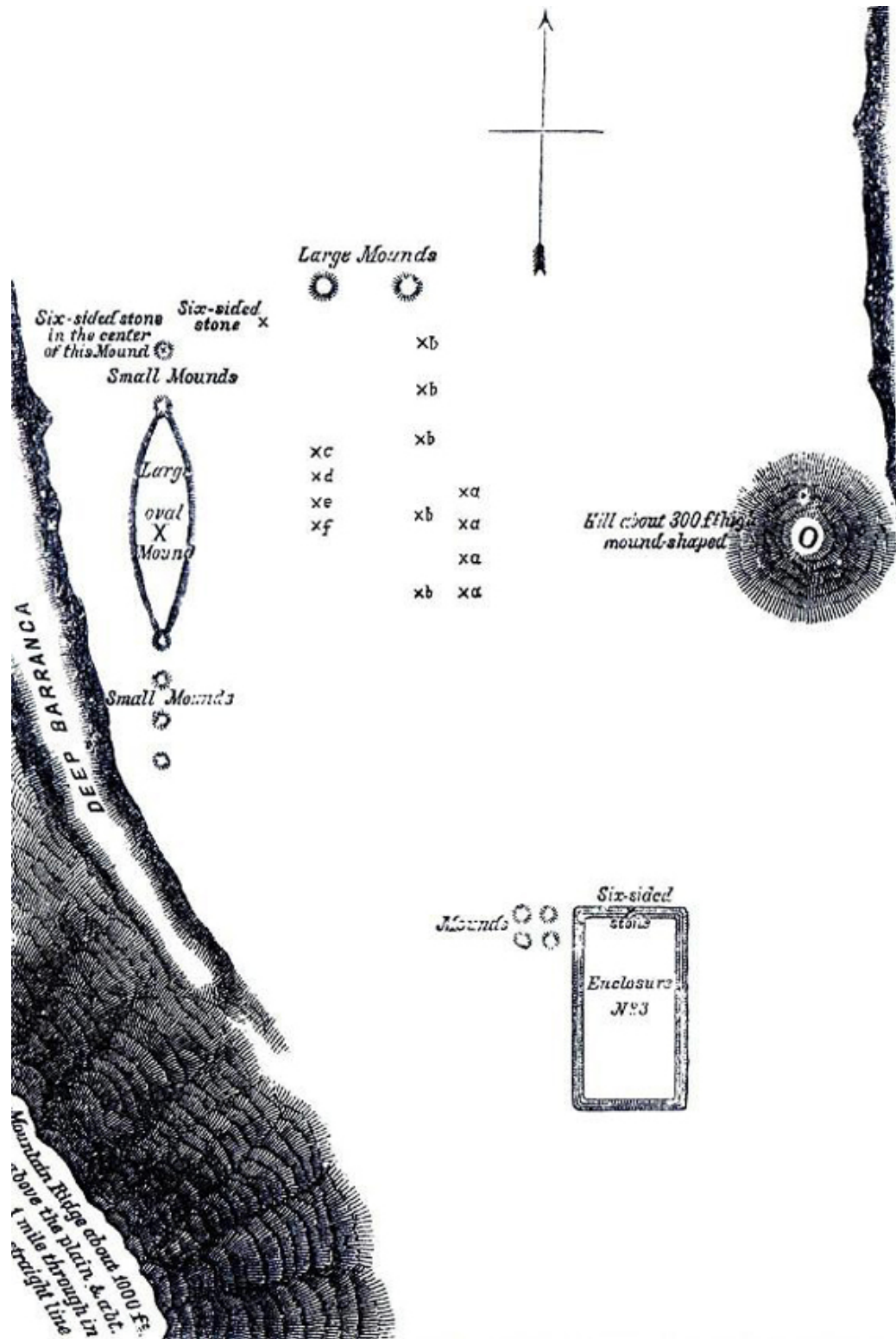


Figure 2. Williamson's sketch map (From Williamson 1887).



Figure 3. Photo by Muybridge of Monument 1 at Naranjo (From Burns 1986).



Figure 4. Monument 28 photographed by Villacorta (1927).

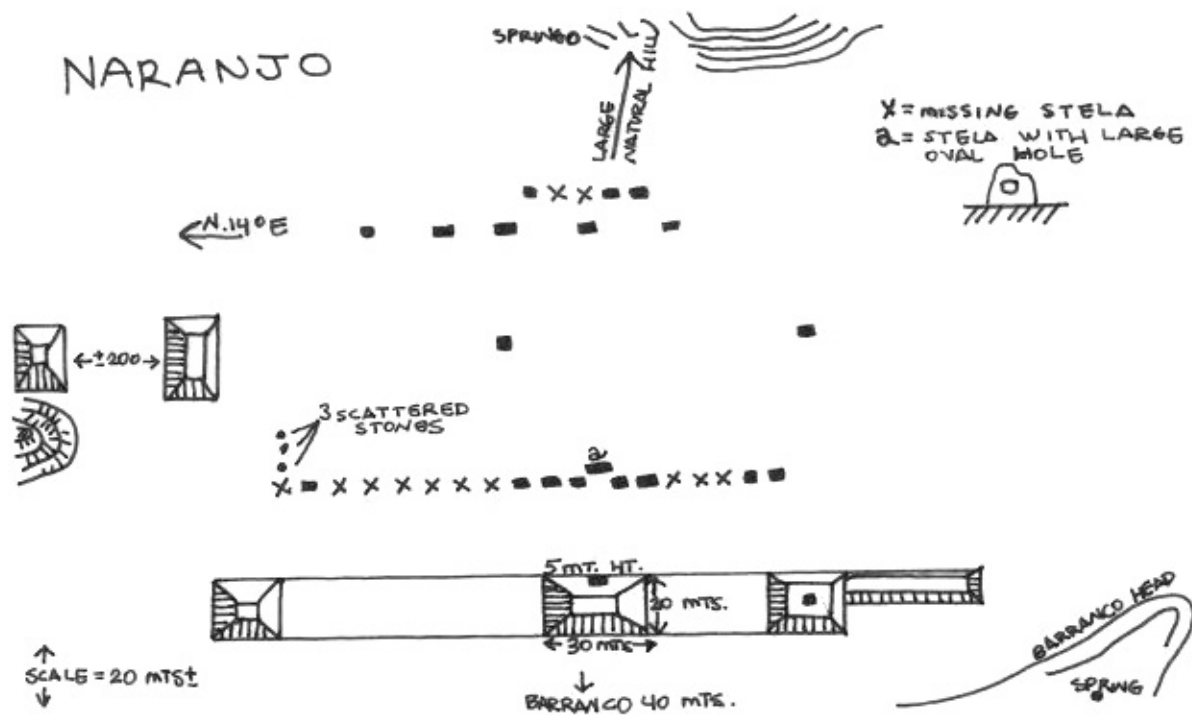


Figure 5. Edwin M. Shook's sketch map of Naranjo (From Universidad del Valle Shook archive).

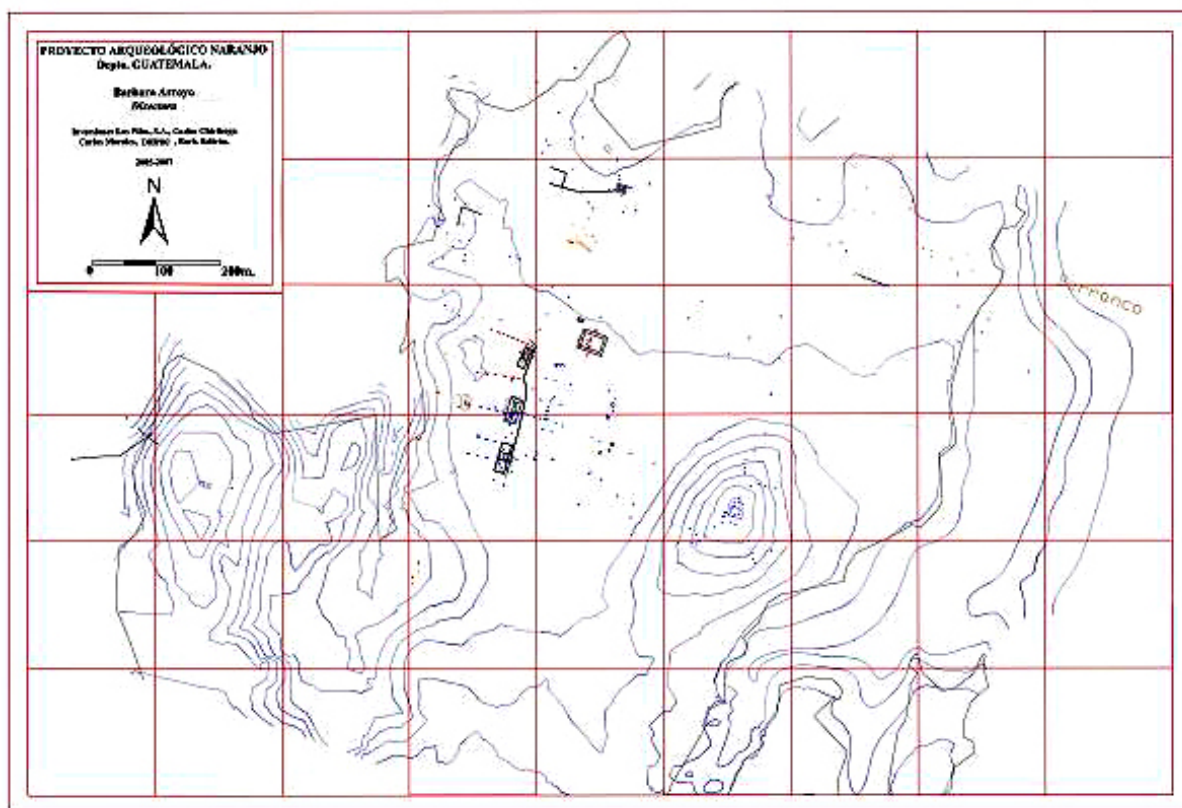


Figure 6. Naranjo topographic map.



Figure 7. Photograph of different building episodes from Mound 1.



Figure 8. Illustration showing North profile from Mound 1.



Figure 9. Northern Platform photo.

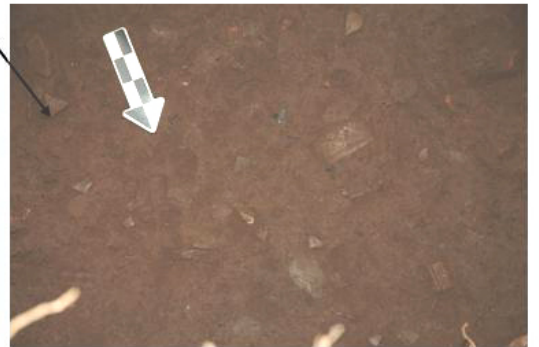
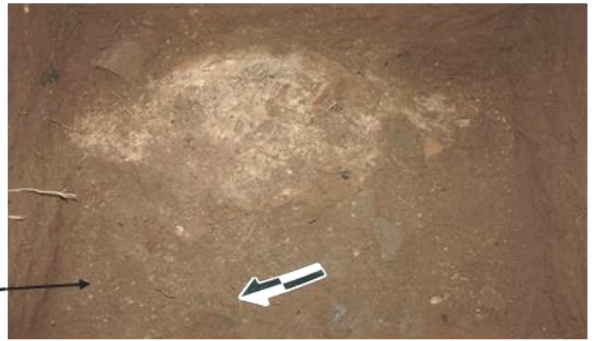


Figure 10. Dedicatory deposit on the Northern Platform showing sherds and ash.



Figure 11. Hearth uncovered at the Northern Platform.



Figure 12. Overall view of 13 stones located in the Northern Platform.



Figure 13. Overall view of offerings found in the Northern Platform.



Figure 14. Excavation of sweatbath near the Northern Platform.



Figure 15. View of the Southern Platform.



Figure 16. Surface on the Southern Platform.



Figure 17. Deposits on the Southern Platform, carved inside sterile soil.



Figure 18. Orange Coarse dish from Las Charcas phase.



Figure 19. Stone alignment at the eastern base of the Southern Platform.



Figure 20. Ceramic figurines recovered at the Southern Platform.



Figure 21. Red on Buff ceramic fragment with early representation of G1.

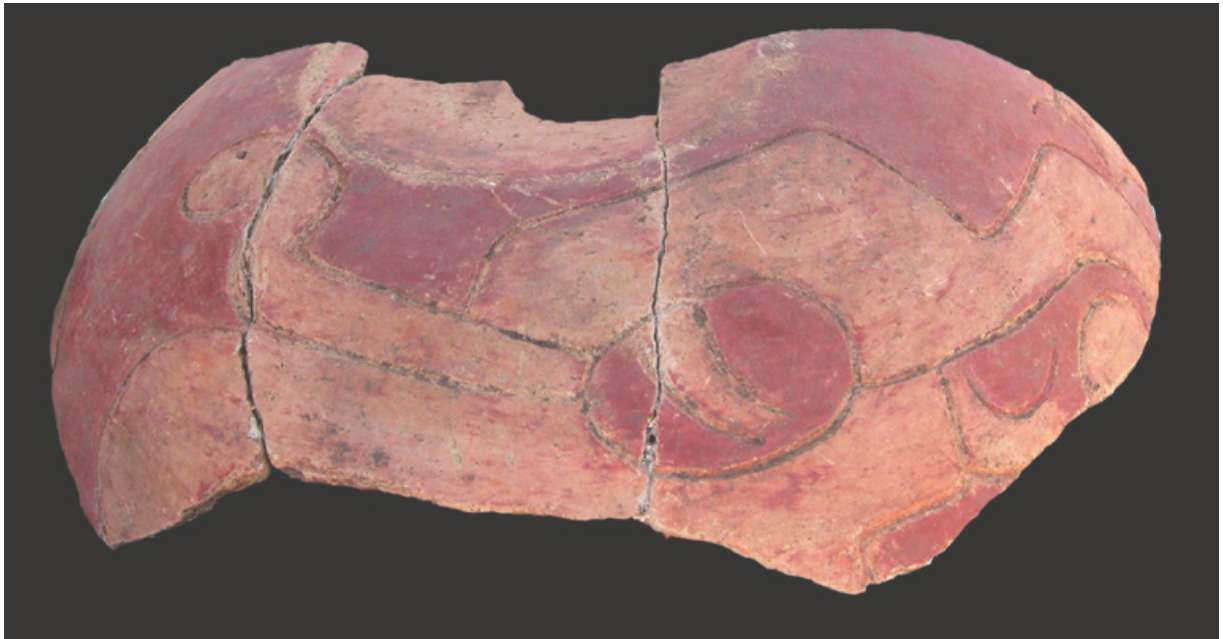


Figure 22. Red on Buff ceramic fragment with representation of Olmec dragon.



Figure 23. View of Mound 2.



Figure 24. Hector Neff surveying with GPR and magnetometer.



Figure 25. Excavating the third line of monuments.



Figure 26. View of the first line of monuments.



Figure 27. Monument 3 and Altar 1.

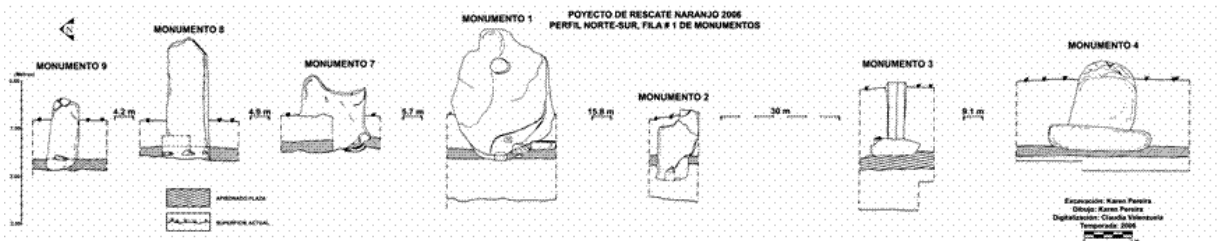


Figure 28. Illustration of monuments and floor associated to them.



Figure 29. Photograph of Monument 27 showing carving.



Figure 30. House floors located on the northern sector of Naranjo.

PROCEDENCIA	FECHA BP	FECHA CALIBRADA	No. MUESTRA LAB	CONTEXTO
OP2-C45-12	2500 +- 40	790-420 AC (cal AP 2740-2370)	215853	Plataforma sur
OP32-5A-04	2550 +- 40	800-750 AC (CAL AP 2760-2700) Y 700-540 AC (CAL AP 2650-2490)	215854	Sector Norte
OP21-03-01	2510 +- 40	790-500 AC (CAL AP 2740-2450) Y 480-430 AC (CAL AP 2410-2380)	215855	Monumento 22
OP6-04-04	4600 +- 40	3500-340 AC (CAL 5450-5390) Y 3380-3340 AC (CAL AP 5330-5290)	214073	Monumento 7
OP5-03-08	2550 +- 40	800-750 AC (CAL 2760-2700) Y 700-540 AC (CAL 2650-2490)	214075	Mon. 3 y Altar 2
NJO36-01-08	2240 +- 40	400-340 AC (CAL AP 2350-2290) 320-210 AC (CAL AP 2270-2160)		abajo piso sector SW
NJO4-27-03	550 +- 50	1300-1440 DC (CAL AP 650-510) 830-750 AC (CAL AP 2780-2700) Y 700-540 AC	217152	dentro fogón
NJO4-06	2590 +- 60	(CAL PB 2650-2490) 770 - 400 AC	209872	plataforma norte sobre estéril
NJO 1-28-12	2470+- 40	(Cal AP 2720 to 2350)	220576	Mont 1
NJO32-17-6	1250 +/- 60 BP	660 to 900 DC	220578	Sector Norte
NJO2-14-5	1250+- 60BP	660 to 900 DC	220577	Deposito Ctardio Plataforma Sur
NJO2-M10W-2	579 +- 40BP	380-160 AC	220579	Plataforma Sur

Figure 31. Radiocarbon dates chart from Naranjo.