

Drawing 25 was shot in 3 sequences.

The settings for the bottom series were:

Inclination: unmeasured
Distance: unmeasured

File	Filter	Gain	Flash (1/x)
d25a__00	2	20	1
d25a__01	6	12	2
d25a__02	7	12	2
d25a__03	9	10	2
d25a__04	10	10	2
d25a__05	13	8	1

The settings for the middle series were:

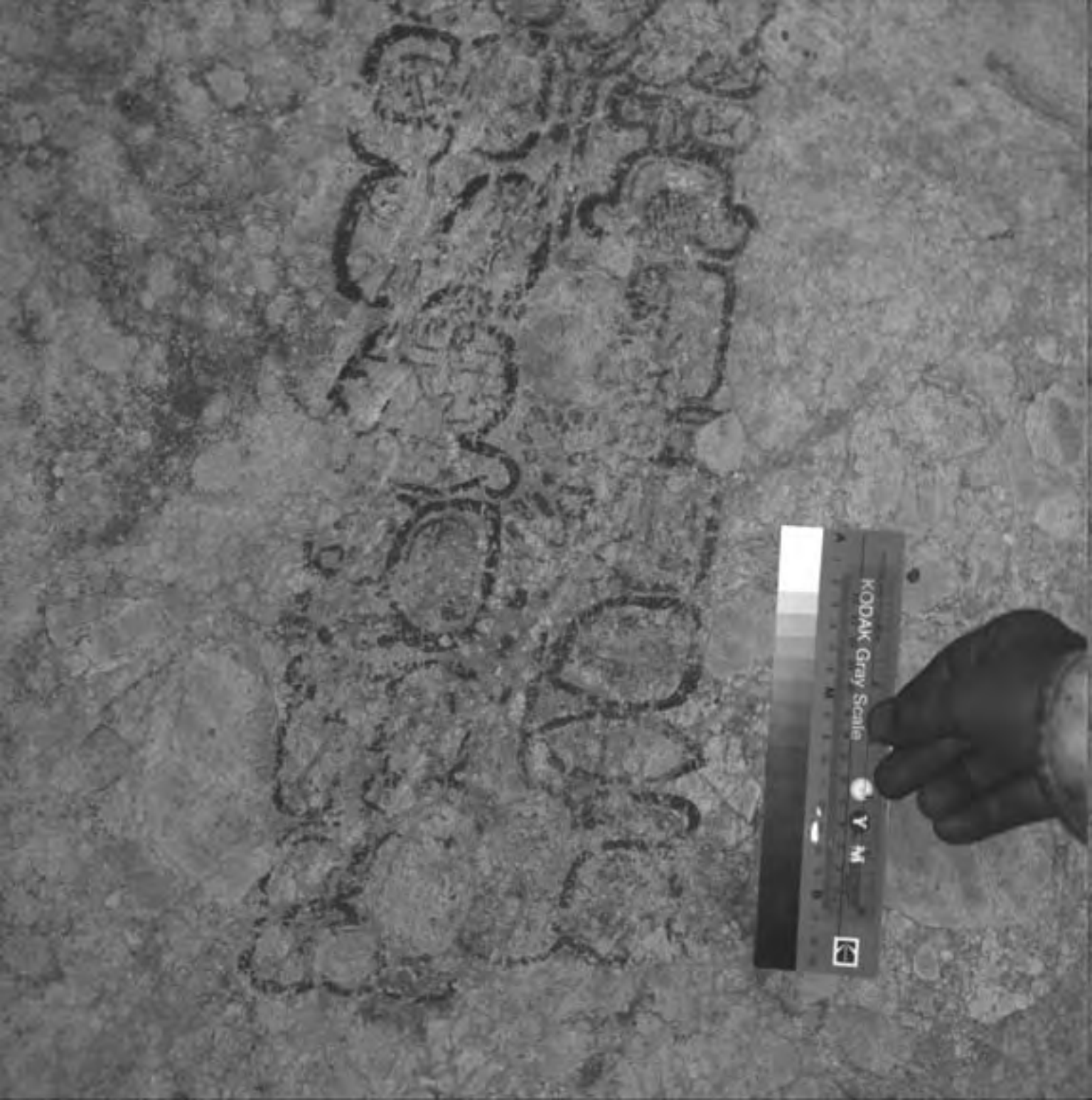
Inclination: + 5 degrees
Distance: 107"

File	Filter	Gain	Flash (1/x)
d25b__00	2	20	1
d25b__01	6	12	2
d25b__02	7	12	2
d25b__03	9	10	2
d25b__04	10	10	2
d25b__05	13	6	1

The settings for the top series were:

Inclination: unmeasured
Distance: unmeasured

File	Filter	Gain	Flash (1/x)
d25c__00	2	22	1
d25c__01	6	14	2
d25c__02	7	12	2
d25c__03	9	10	2
d25c__04	10	10	2
d25c__05	13	4	1















KODAK Gray Scale

Y M





















