

Drawing 32 was shot in 2 sequences. Sequence d32a is on the right, and d32b is on the left. The files "d32b__03" and "d32b__04" are thought to be recorded in error, and not part of the final set, but have been left in on the chance that they are not errors.

The settings for the right hand series were:

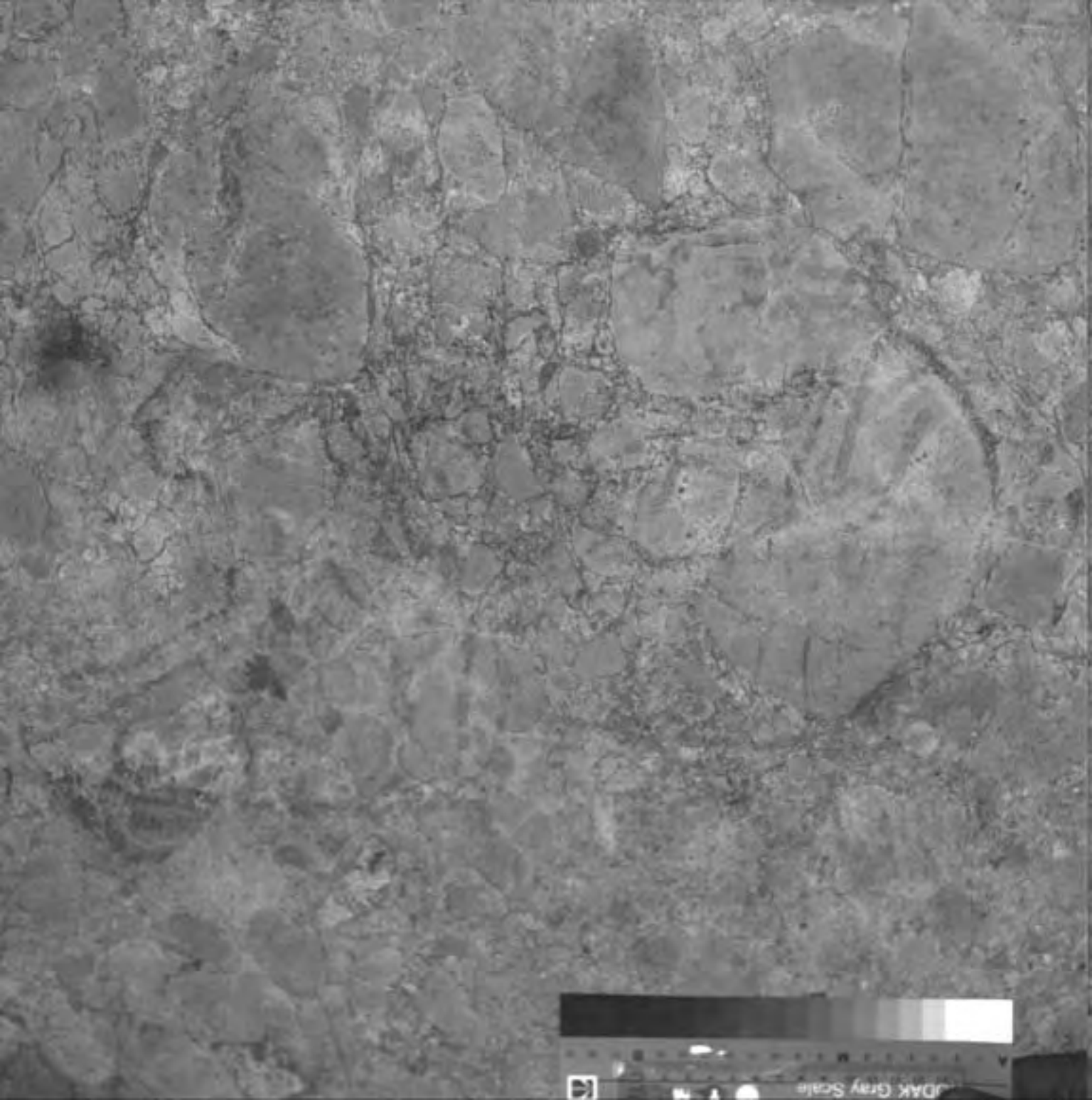
Inclination: - 65 degrees
Distance: 104"

File	Filter	Gain	Flash (1/x)
d32a__00	2	22	1
d32a__01	6	2	1
d32a__02	7	12	2
d32a__03	9	10	2
d32a__04	10	10	2
d32a__05	13	6	1

The settings for the left hand series were:

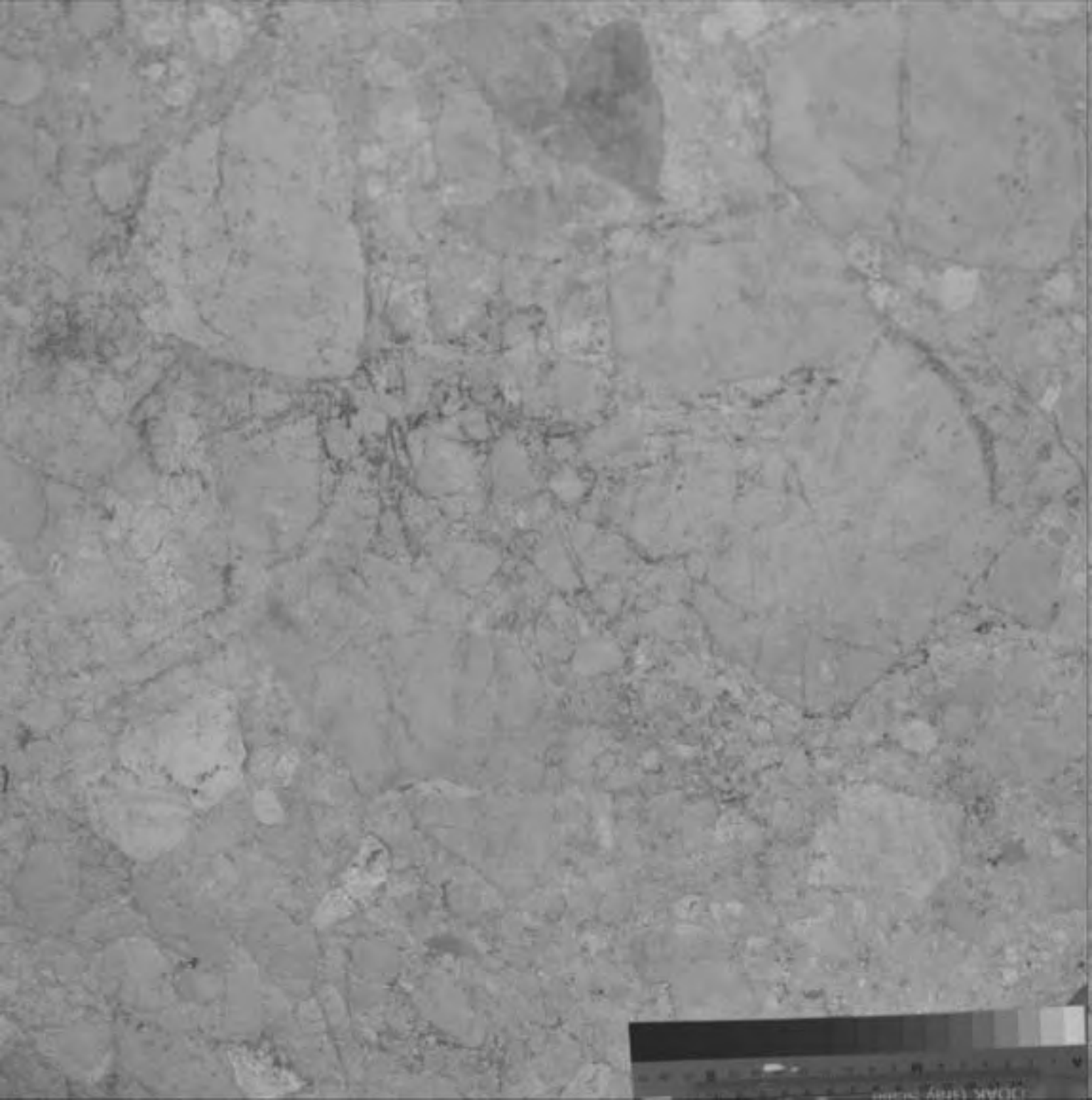
Inclination: - 65 degrees
Distance: 104"

File	Filter	Gain	Flash (1/x)
d32b__00	2	20	1
d32b__01	6	14	2
d32b__02	7	12	2
d32b__05	9	10	2
d32b__06	10	10	2
d32b__07	13	8	1

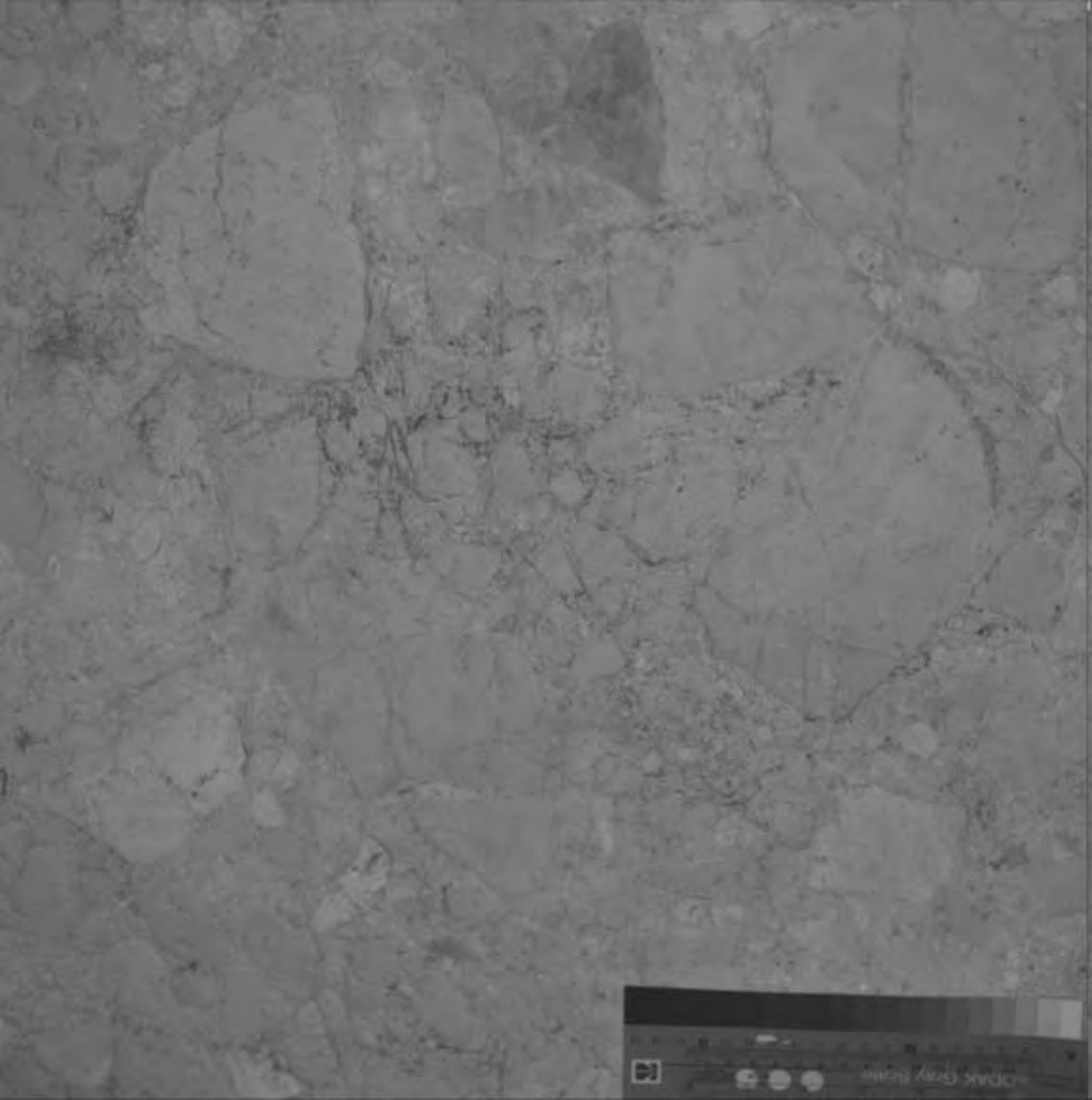












Dark Gray Bone



KODAK Gray Scale
Y M













