

Drawing 4 is divided into two sequences, top and bottom.

This was the first drawing done, and so there was a lot of extra data taken in testing. The first two series (d04___00 - d04___26) were done without refocusing in between filters. This proved not to work well, so the next two series repeated the first focusing in between filter changes. The accuracy of the numbers is kind of suspect, as this was the first series and things weren't well worked out. The numbers provided are those recorded, with no attempt to see if they actually make sense.

The first top series settings were:

Inclination: 0 degrees
Distance: unmeasured

File	Filter	Gain	Flash (1/x)
d04___00	2	10	1
d04___01	3	20	1
d04___02	4	6	1
d04___03	5	10	2
d04___04	6	8	2
d04___05	7	8	2
d04___06	8	6	2
d04___07	9	6	2
d04___08	10	6	2
d04___09	11	6	2
d04___10	12	6	4
d04___11	13	10	4
d04___12	142	14	4

The next file was taken with the tape measure in the picture.

d04___13	5	10	4
----------	---	----	---

The first bottom series settings were:

Inclination: +1 degree
Distance: unmeasured

File	Filter	Gain	Flash
d04__14	2	14	1
d04__15	3	14	1
d04__16	4	24	1
d04__17	5	8	1
d04__18	6	0	2
d04__19	7	10	2
d04__20	8	8	2
d04__21	9	8	2
d04__22	10	6	2
d04__23	11	6	2
d04__24	12	6	2
d04__25	13	0	1
d04__26	14	6	1

The settings for the second top series were:

Inclination: unmeasured
Distance: unmeasured

File	Filter	Gain	Flash (1/x)
d04a__00	2	?	1
d04a__01	3	20	1
d04a__02	4	4	1
d04a__03	5	8	2
d04a__04	6	8	2
d04a__05	7	8	2
d04a__06	8	6	2
d04a__07	9	6	2
d04a__08	10	6	2
d04a__09	11	6	2
d04a__10	12	6	4
d04a__11	13	10	1
d04a__12	142	6	1
d04a__14	2	10	?
d04a__15	3	20	?
d04a__16	4	14	?

The second bottom series settings were:

Inclination: +1 degree
Distance: unmeasured

File	Filter	Gain	Flash
d04a__17	5	8	?
d04a__18	6	20	?
d04a__19	7	4	?
d04a__20	8	0	?
d04a__21	9	6	?
d04a__22	10	4	?
d04a__23	11	4	2
d04a__24	12	6	2
d04a__25	13	6	2
d04a__26	14	6	2
d04a__27	12	6	4
d04a__28	13	10	2
d04a__29	14	8	1

















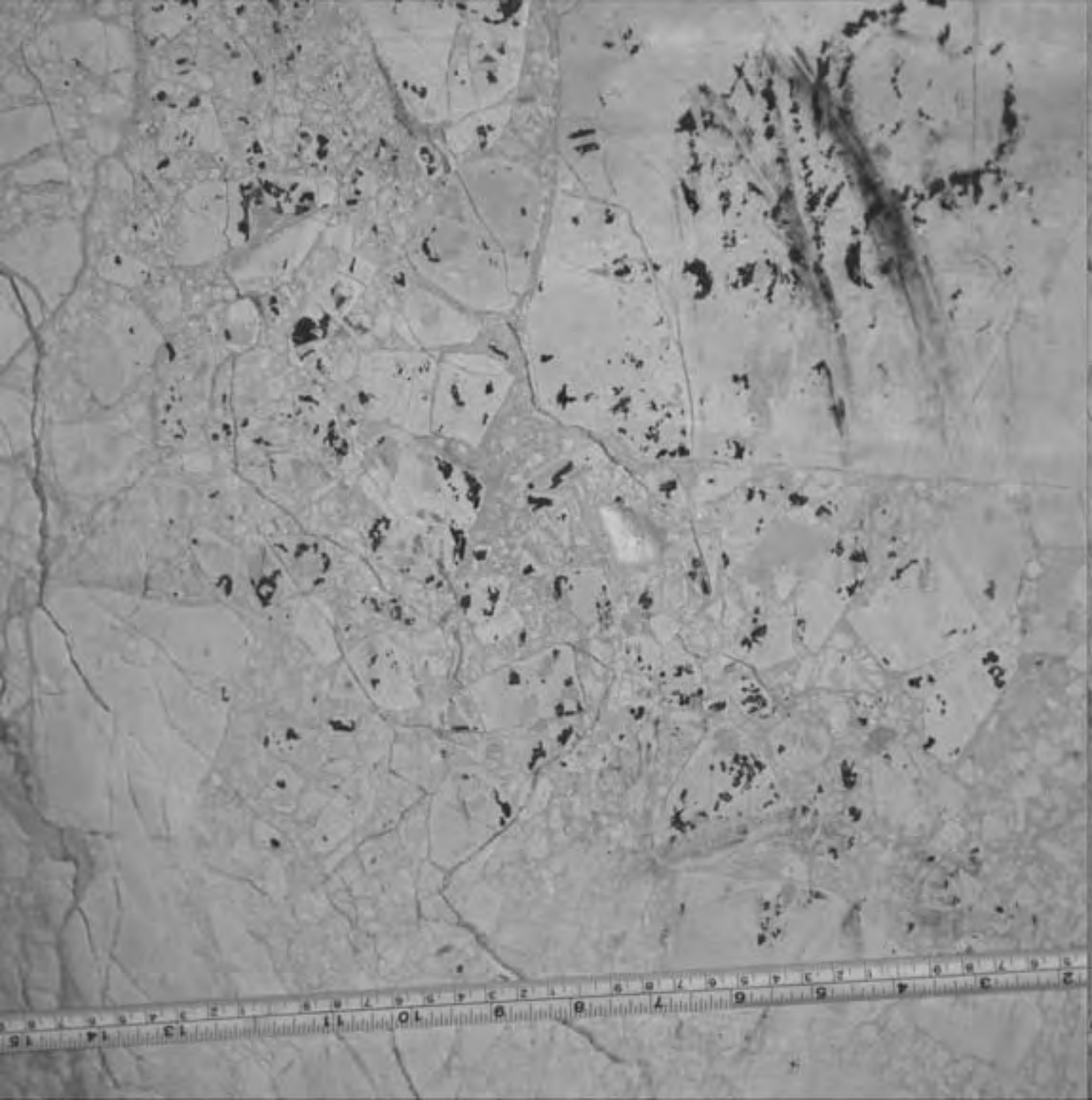






















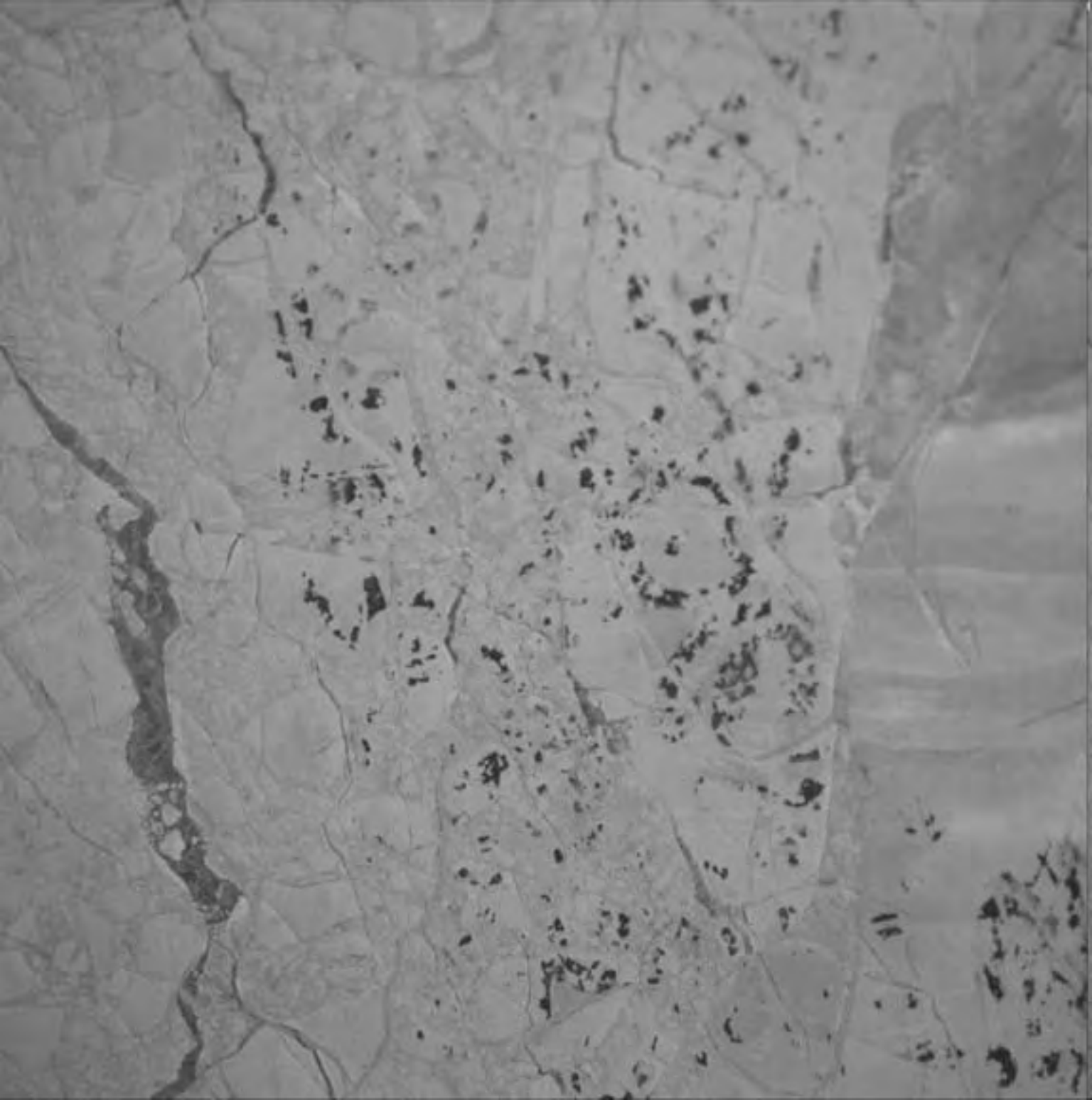




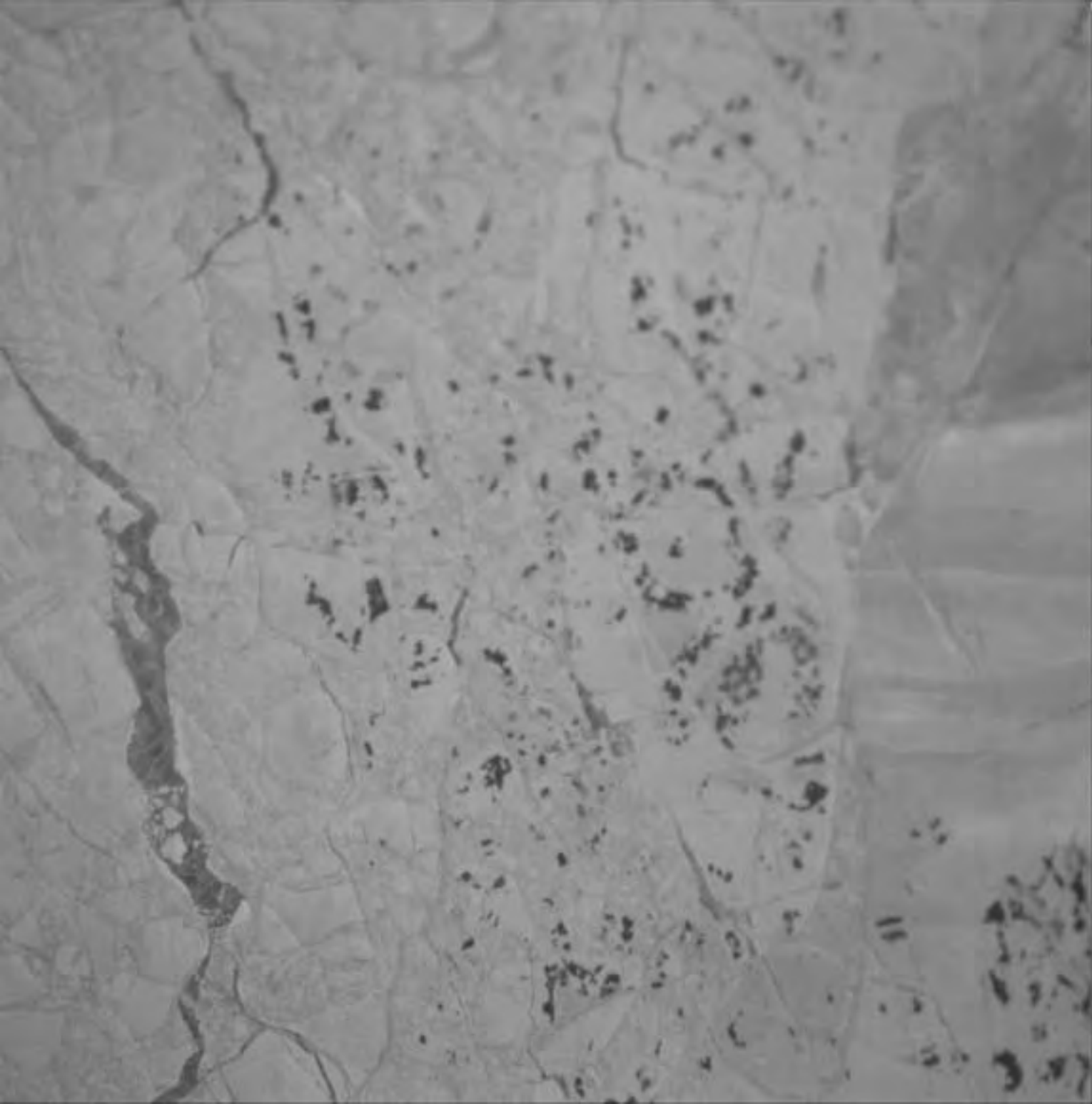










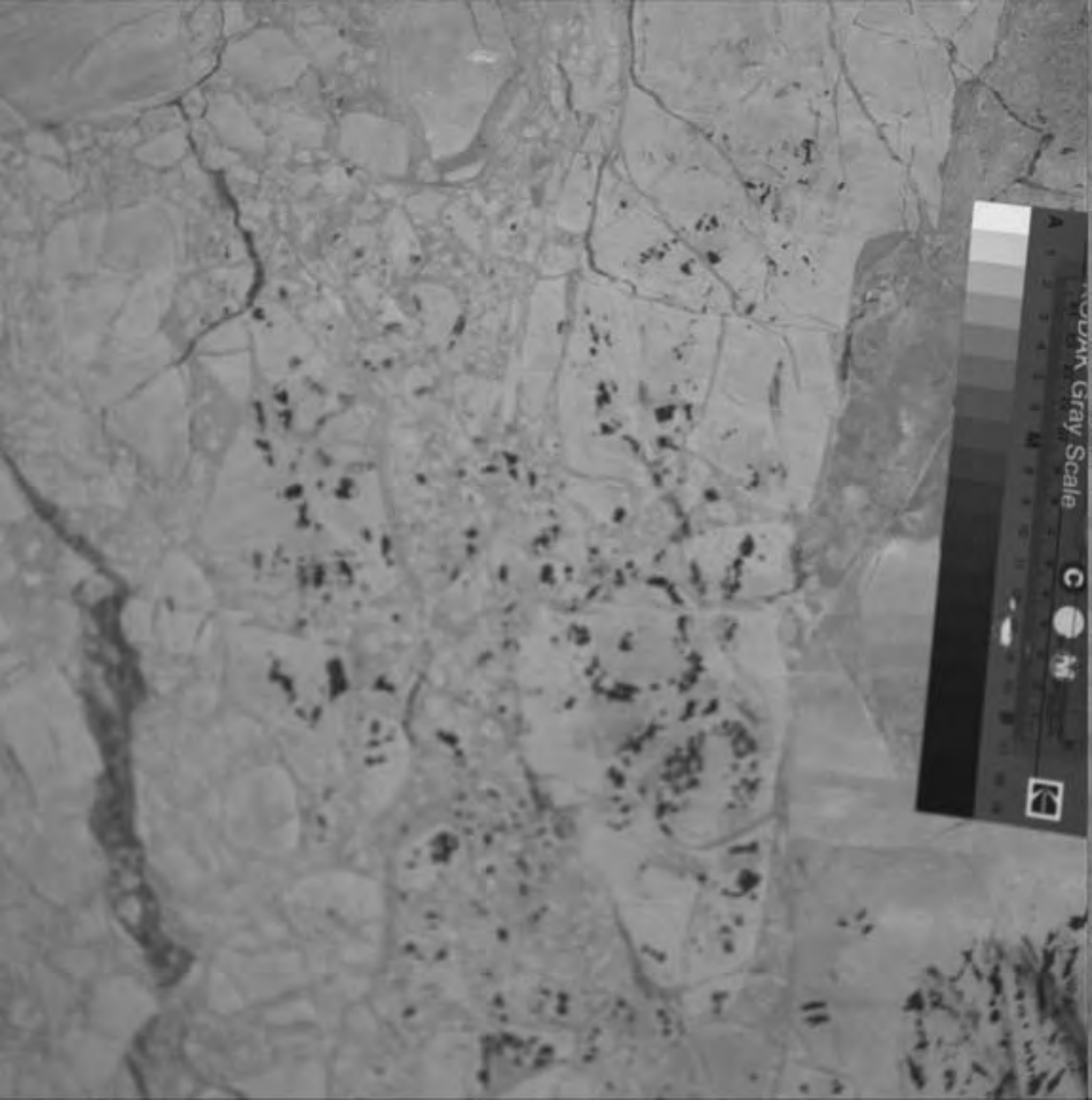


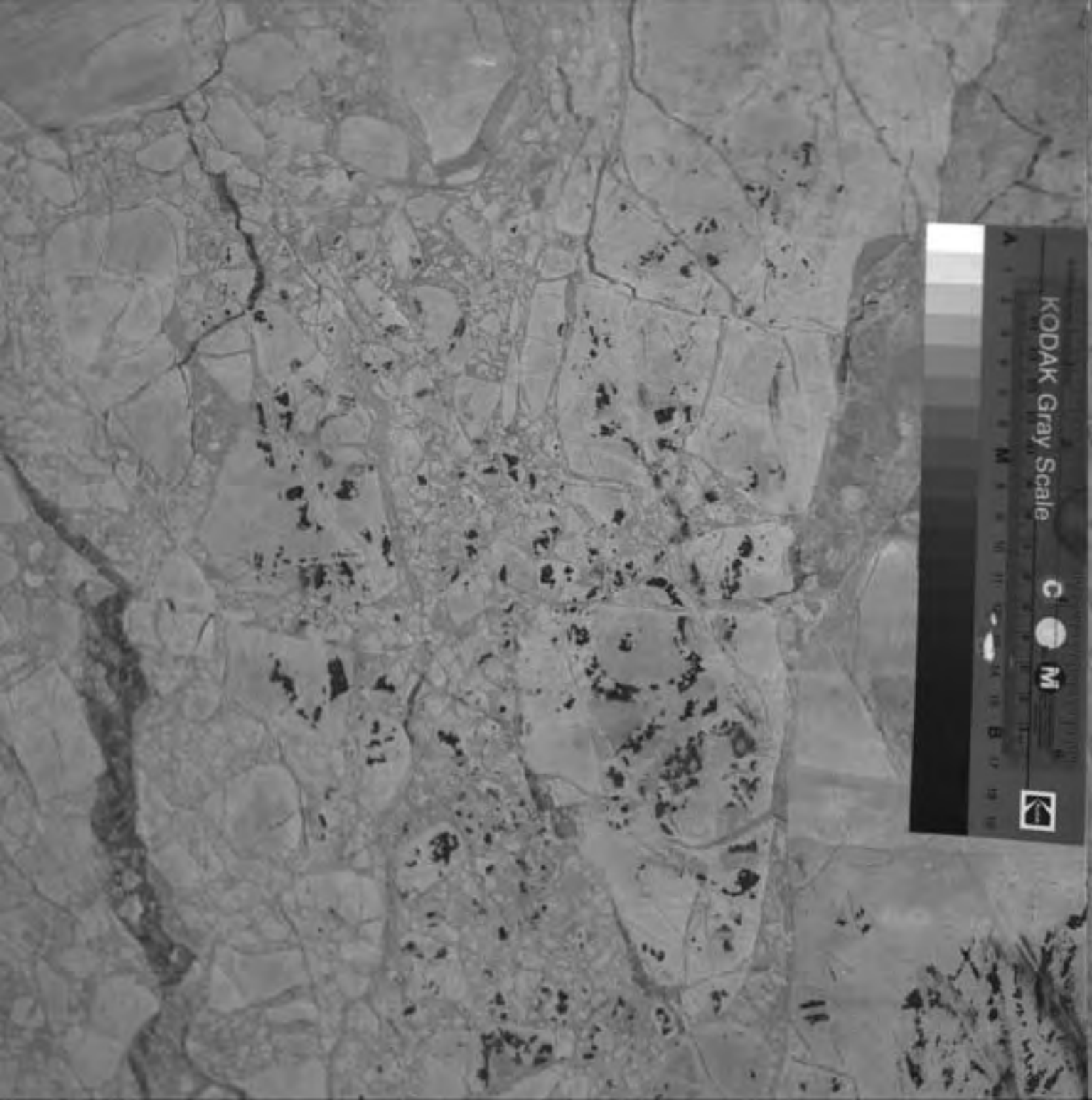


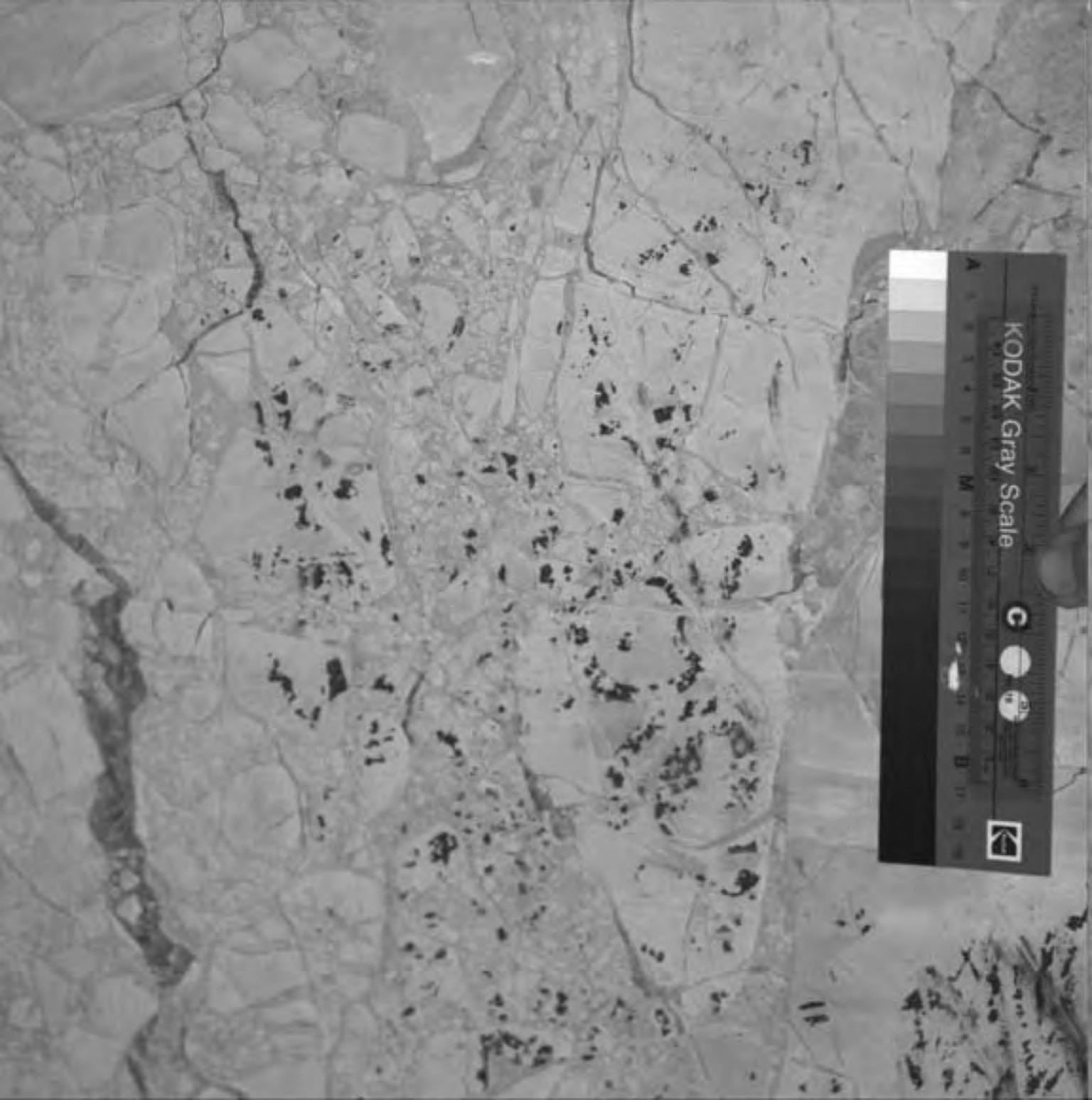








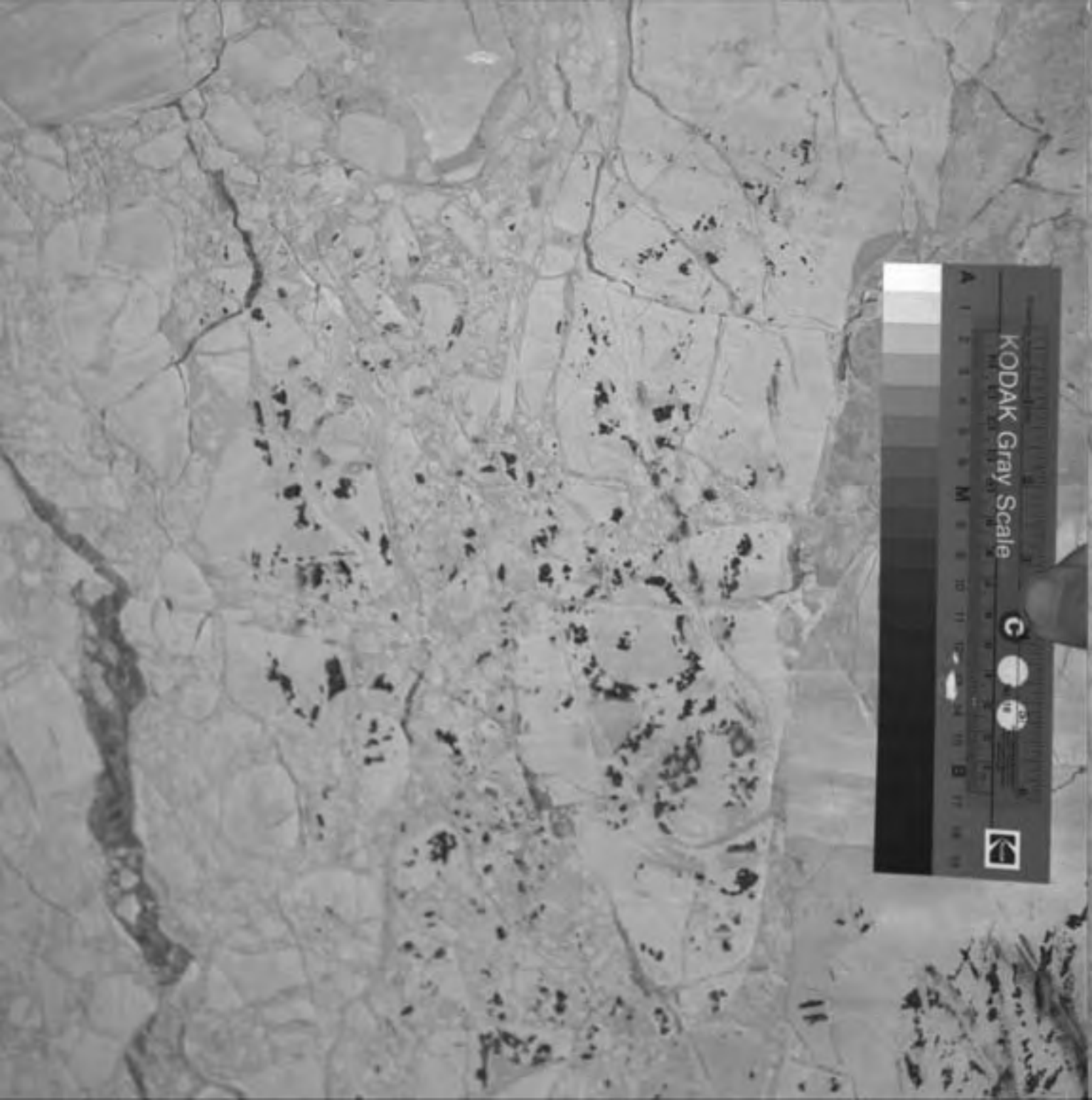


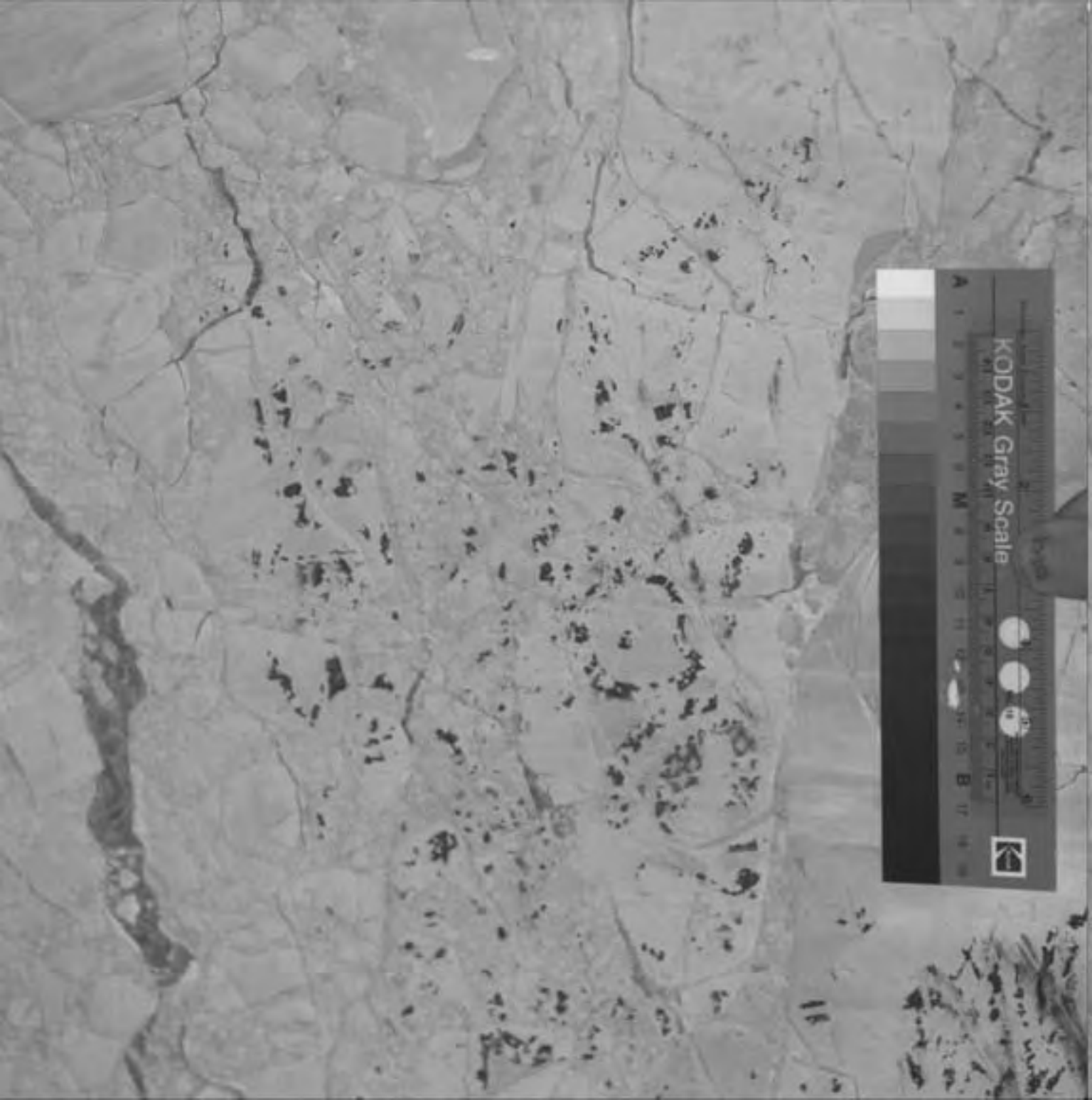


KODAK Gray Scale

C



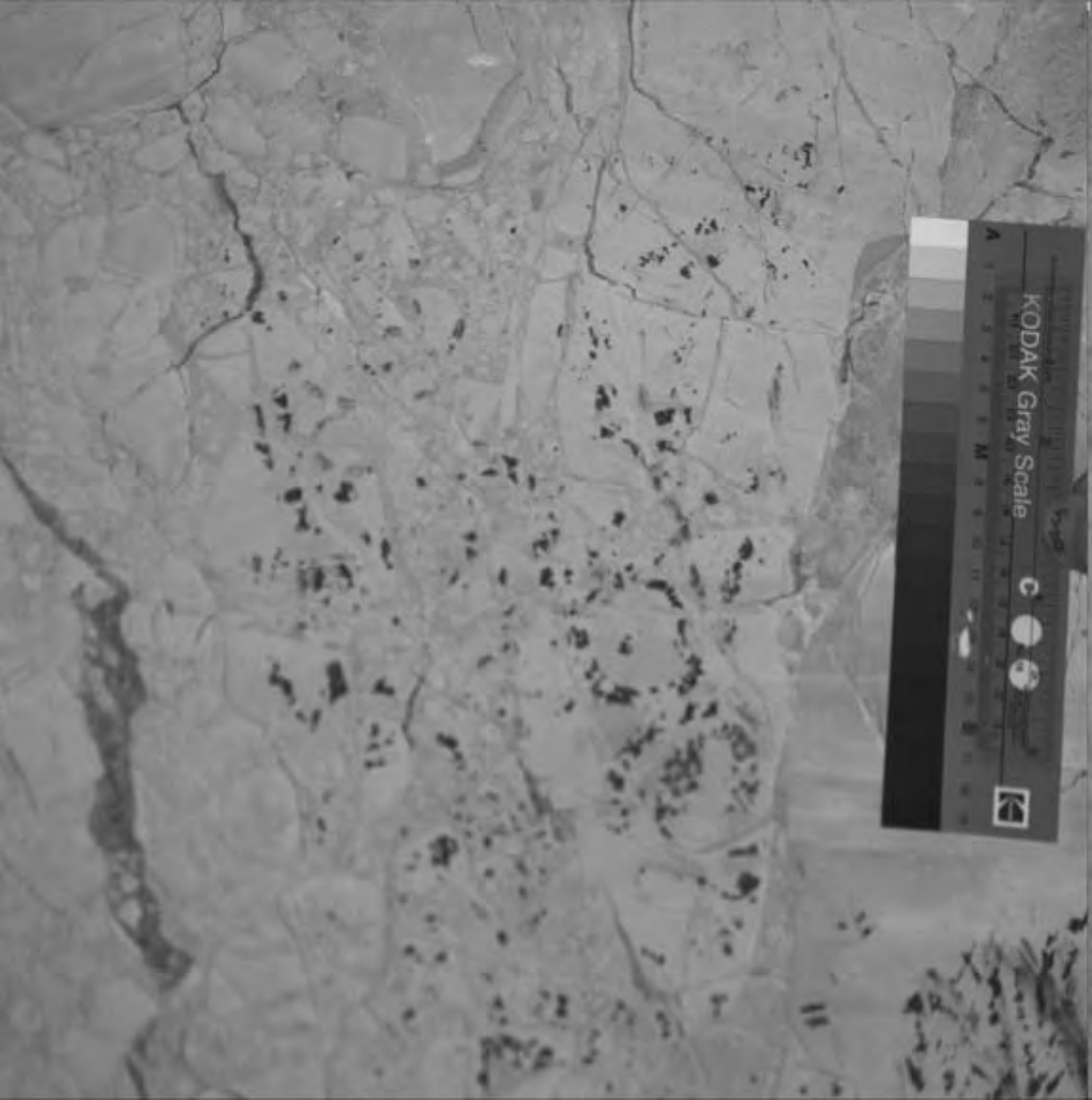




KODAK Gray Scale

1 2 3 4 5 6 7 8 9 10
A I J K L M N O P Q R S T U V W X Y Z



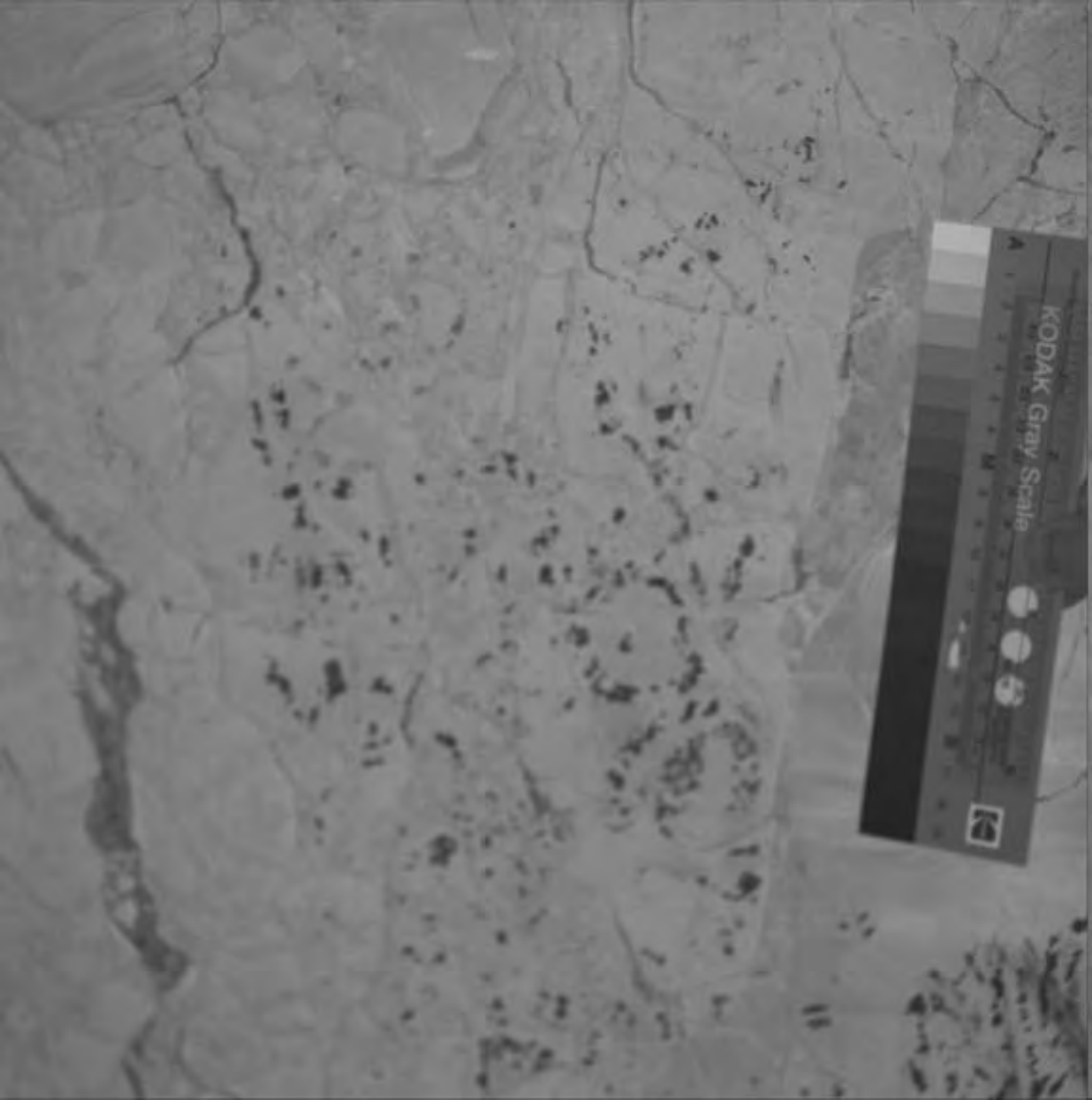


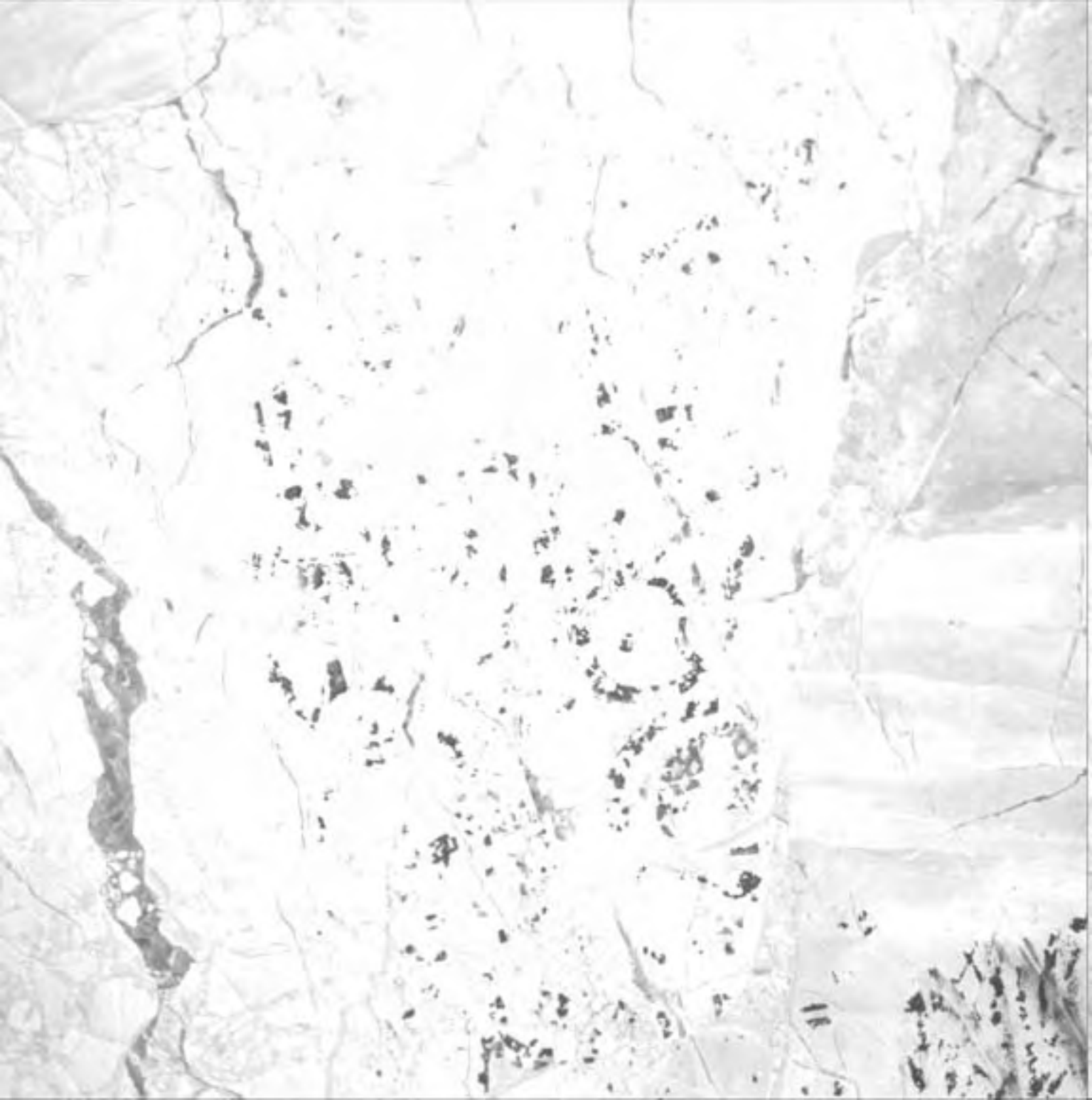
KODAK Gray Scale

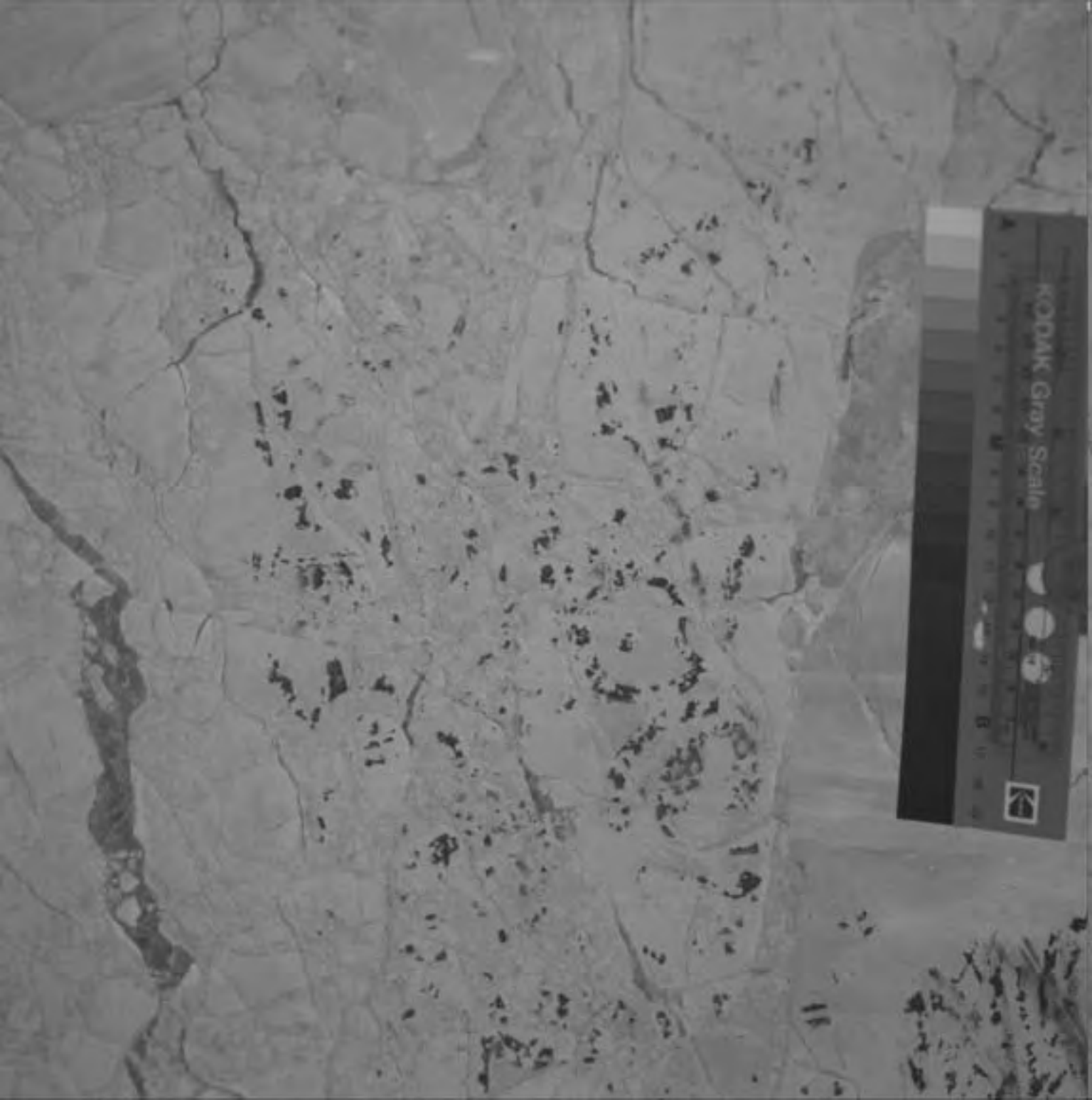
C











KODAK Gray Scale



M



KODAK Gray Scale

Y M





























