

Drawing 52 is shot in two pieces, top and bottom. Notice that file number d52___14 is not in the sequence. The recording program skipped this number for some reason, so this is not a missing file. The filter sequences are correspondingly mixed up, but should be correct.

The top sequence is as follows:

Inclination: Unmeasured
Distance from wall: 63"

File	Filter	Gain	Flash (1/x)
d52___00	2	14	1
d52___01	6	4	2
d52___02	7	2	2
d52___03	9	6	4
d52___04	10	8	4
d52___05	13	6	2
d52___06	4	10	2
d52___07	5	4	2

The bottom sequence is as follows:

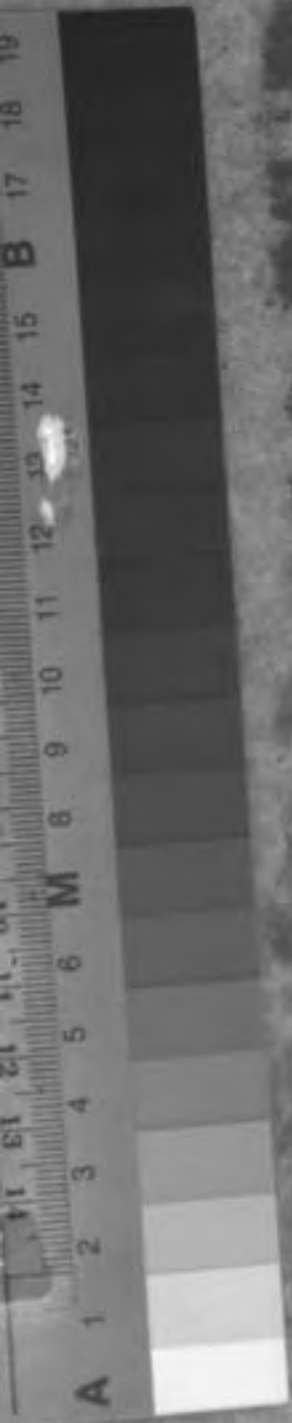
Inclination: +19.5 degrees
Distance from wall: 115"

File	Filter	Gain	Flash (1/x)
d52___08	2	18	1
d52___09	6	8	2
d52___10	7	6	2
d52___11	9	2	2
d52___12	10	4	2
d52___13	4	10	2
d52___15	5	4	2
d52___16	13	8	2











A 1 2 3 4 5 6 M 8 9 10 11 12 13 14 15 B 17 18 19











A 1 2 3 4 5 6 M 0 9 10 11 12 13 14 15 B 17 18 19











