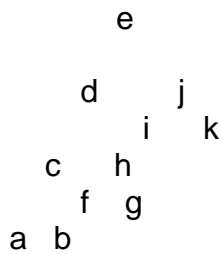


Drawing 5 was shot in 11 sequences.

Rather than try and describe how they overlap, the following very rough diagram can be used to try and locate the relationships.



This is very rough, but can perhaps give an idea. The rock is roughly triangular in shape.

The settings for series a were:

Inclination: -35 degrees
Distance: 62.5"

File	Filter	Gain	Flash (1/x)
d05__00	2	14	1
d05__01	3	24	1
d05__02	4	4	1
d05__03	5	8	2
d05__04	6	8	2
d05__05	7	4	2
d05__06	8	?	2
d05a__00	9	4	?
d05a__01	10	4	1
d05a__02	11	4	1
d05a__13	12	4	1
d05a__14	13	6	1
d05a__15	14	6	1

The settings for series b were:

Inclination: - 35 degrees
Distance: 61"

File	Filter	Gain	Flash (1/x)
d05b__00	2	10	1
d05b__01	3	20	1
d05b__02	4	20	1
d05b__03	5	0	1
d05b__04	6	8	1
d05b__05	7	4	1
d05b__06	8	4	1
d05b__00	9	2	1
d05b__01	10	2	1
d05b__02	11	4	2
d05b__13	12	4	4
d05b__14	13	6	4
d05b__15	14	2	4

The settings for series c were:

Inclination: - 35 degrees
Distance: unmeasured (tripod head was raised the extent of the post)

File	Filter	Gain	Flash (1/x)
d05c__00	2	12	1
d05c__01	3	22	1
d05c__02	4	2	1
d05c__03	5	8	1
d05c__04	6	8	1
d05c__05	7	8	2
d05c__06	8	8	2
d05c__00	9	8	2
d05c__01	10	10	2
d05c__02	11	10	2
d05c__13	12	10	4
d05c__14	13	10	2
d05c__15	14	10	2







KODAK Gray Scale

1-10

1 2 3 4 5 6 7 8 9 10 11 12 13 14 15 16 17 18 19

M Y M

B



KODAK Gray Scale

A

1 2 3 4 5 6 7 8 9 10 11 12 13 14 15 16 17 18

M

C

M

B



100









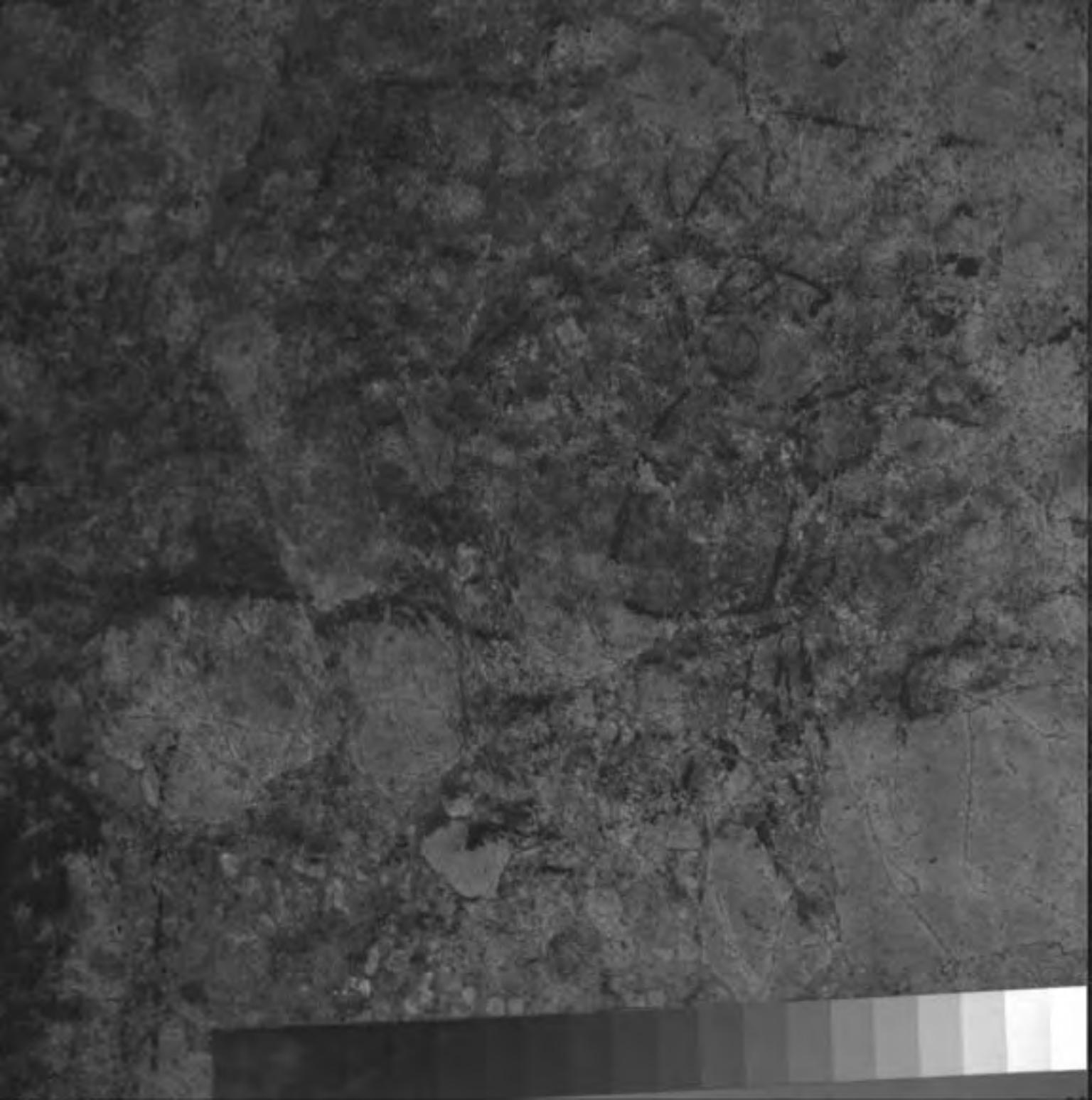








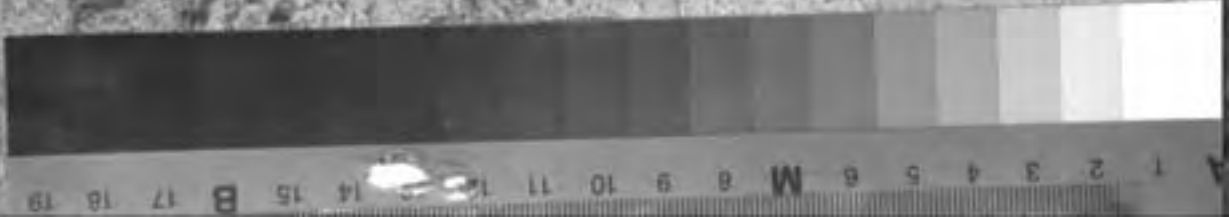




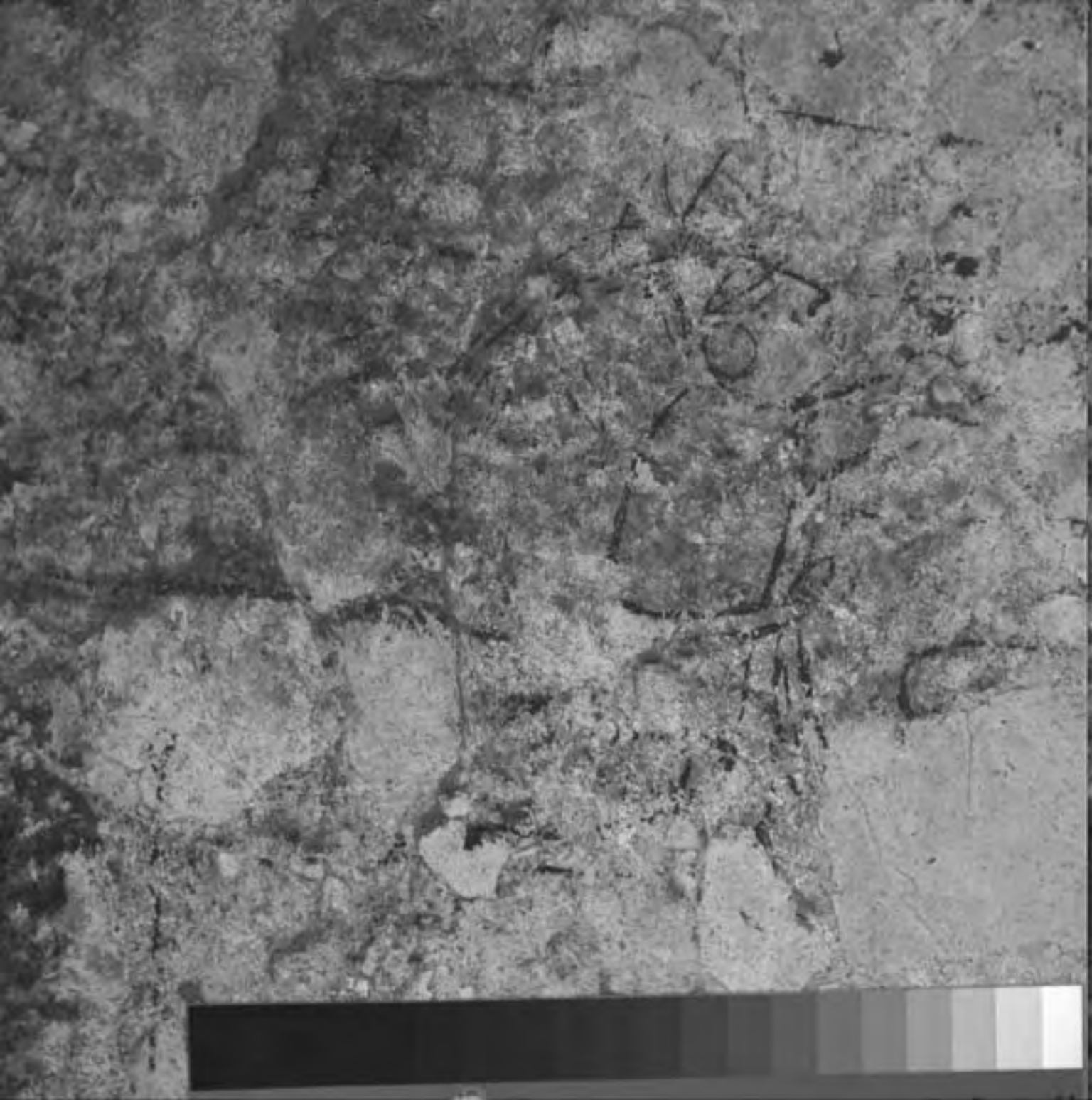




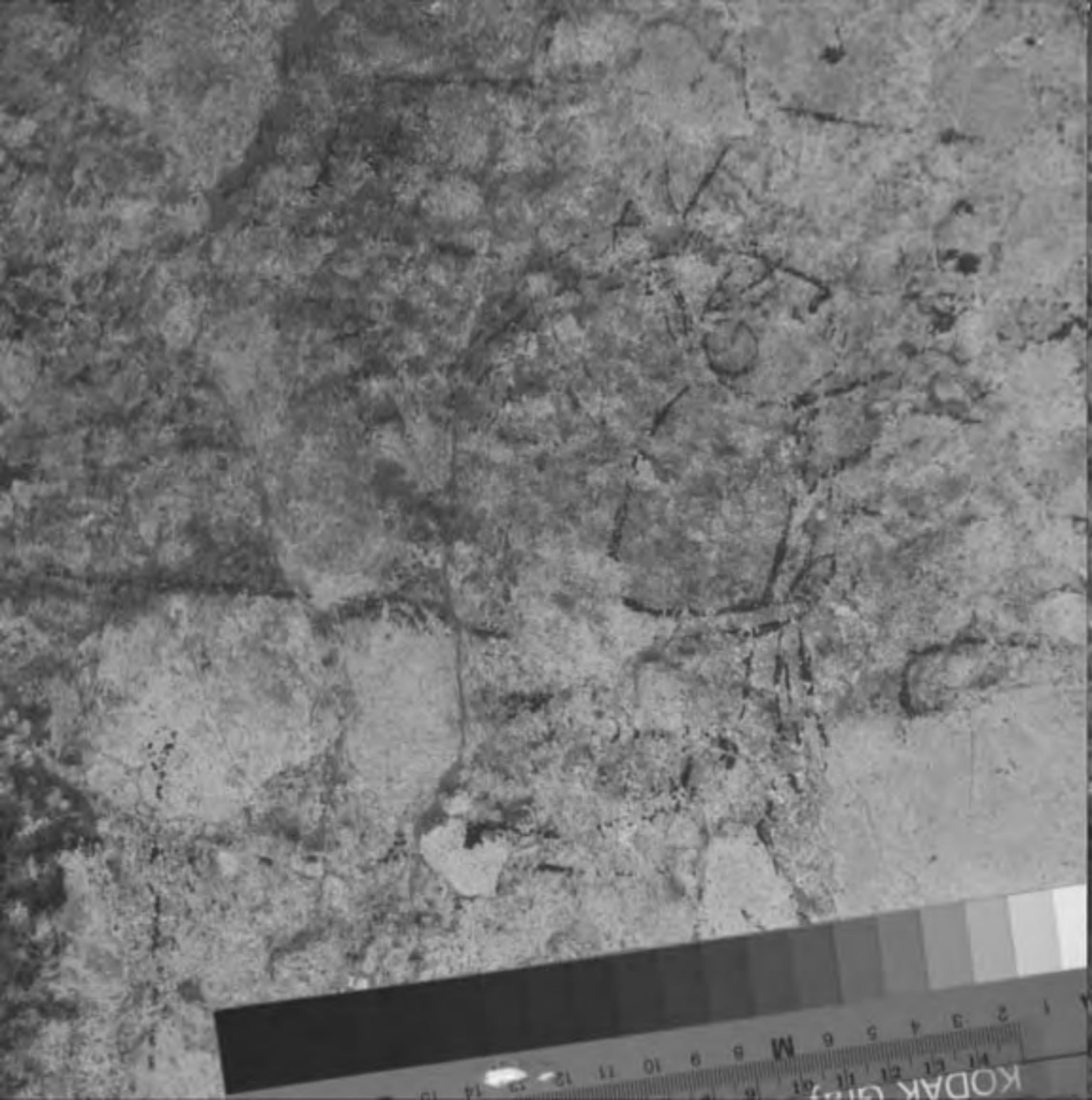
1 2 3 4 5 6 7 8 9 10 11 12 13 14 15 16 17 18 19





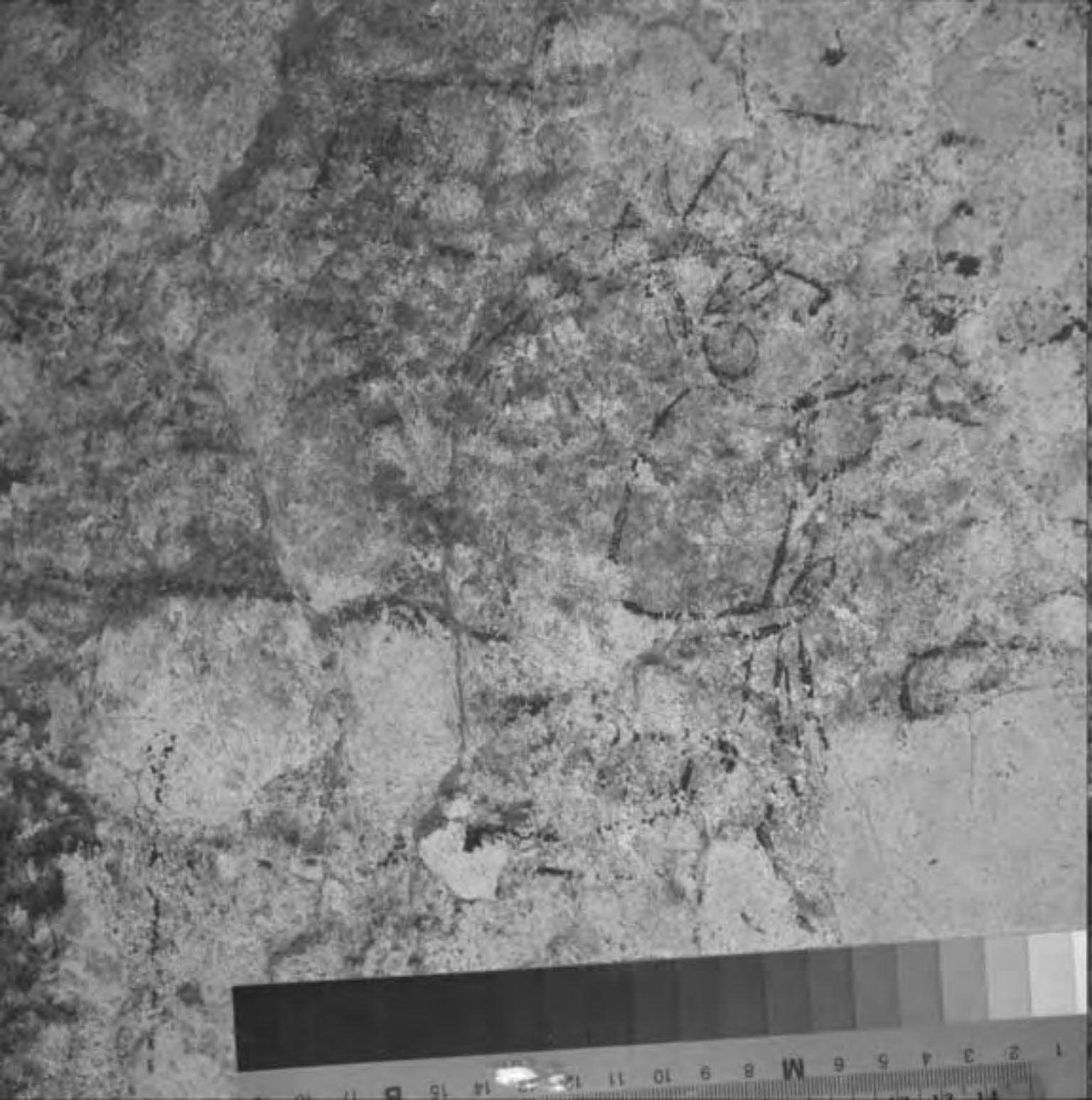


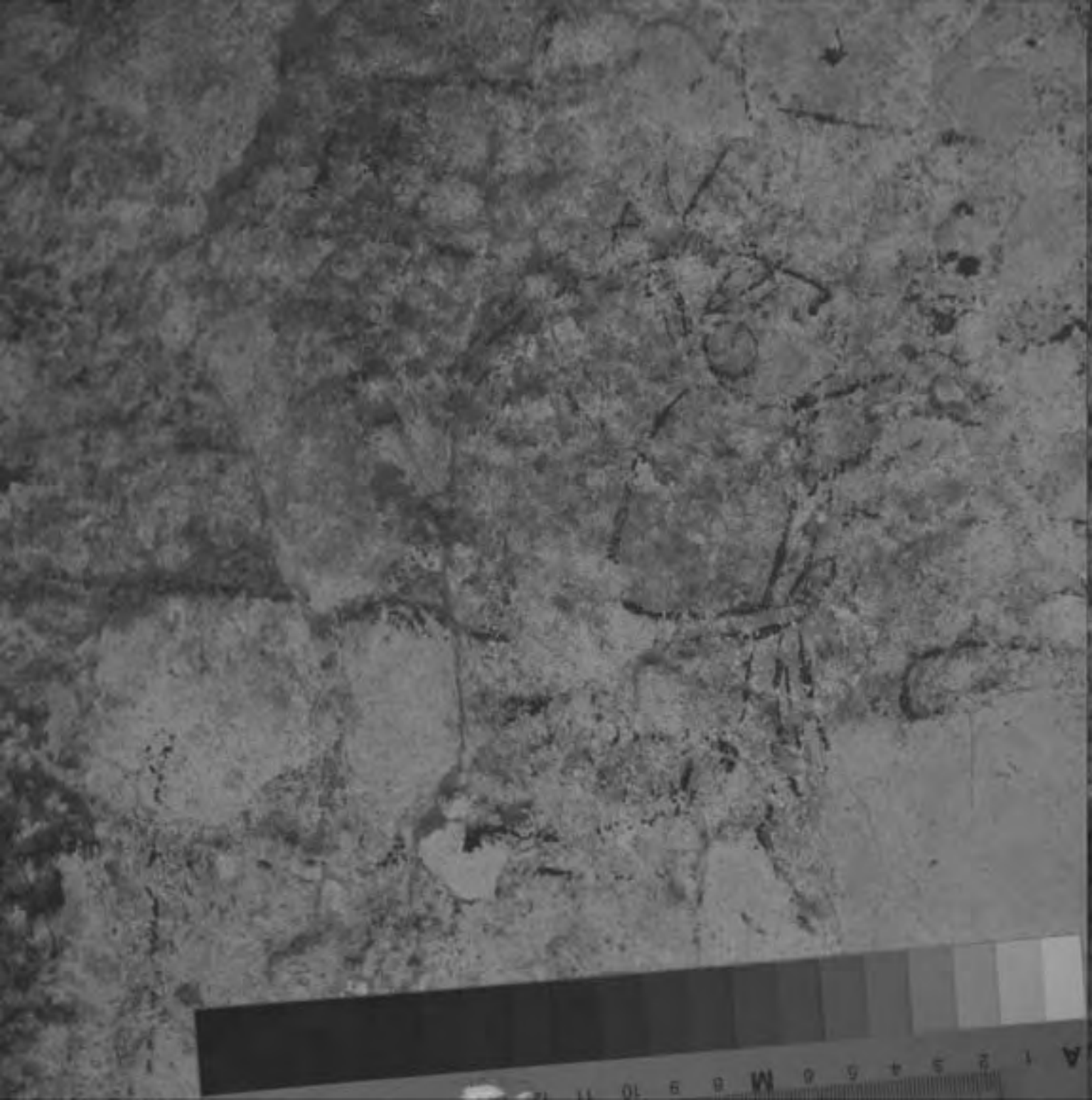


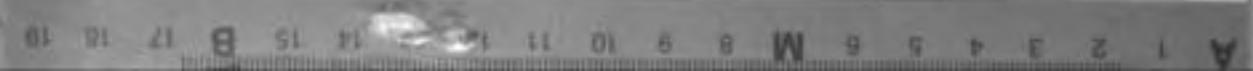


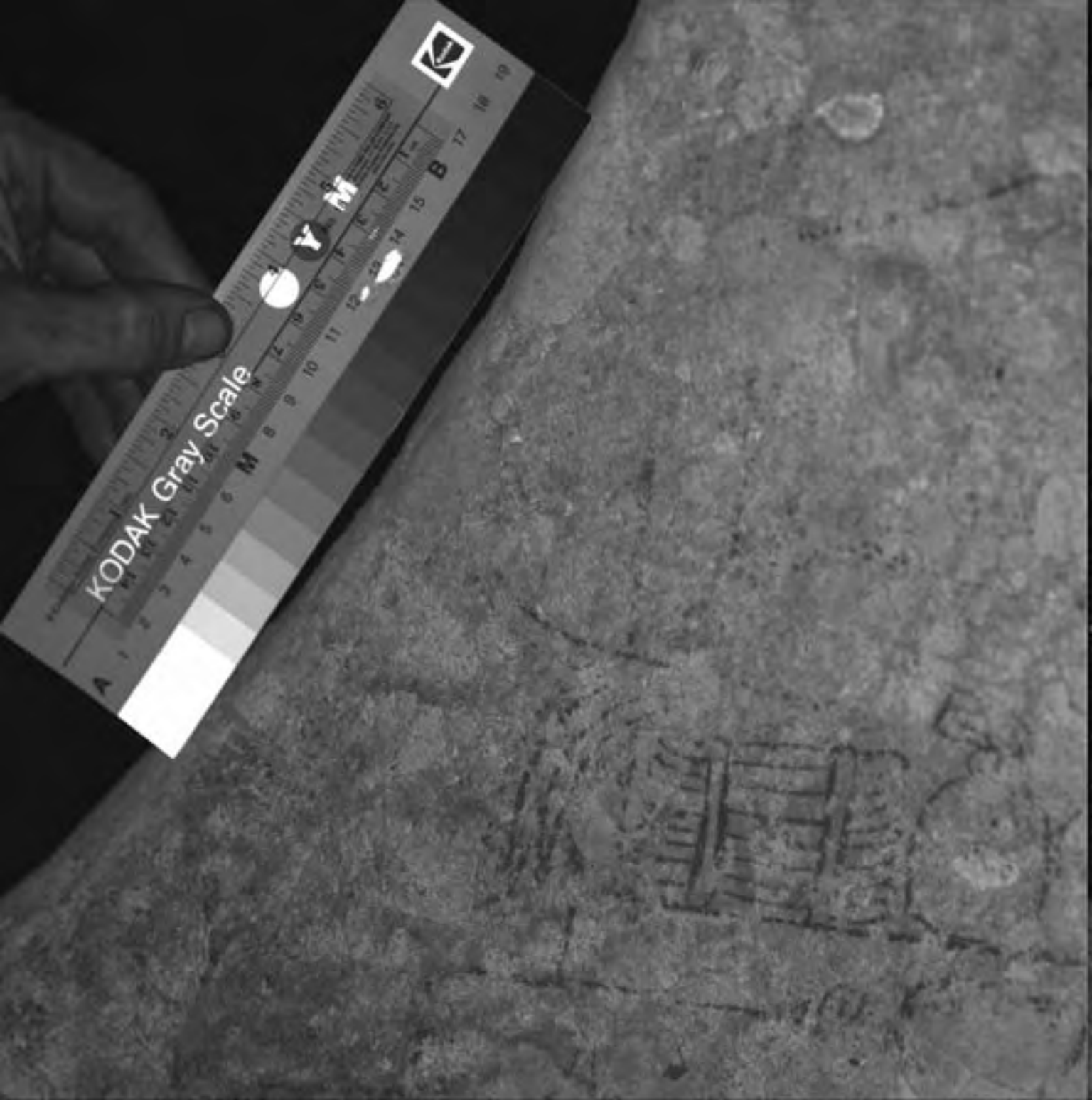




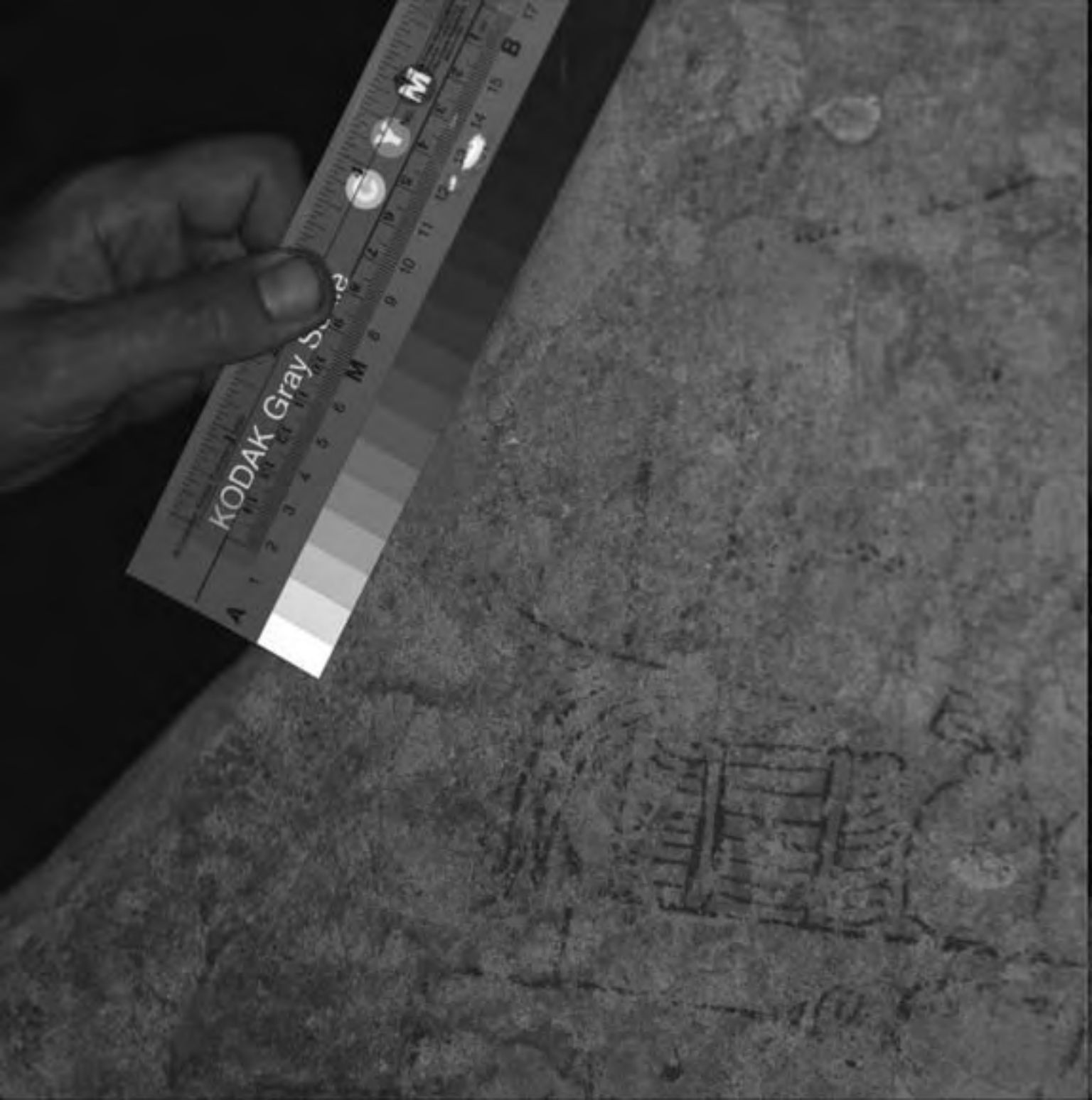




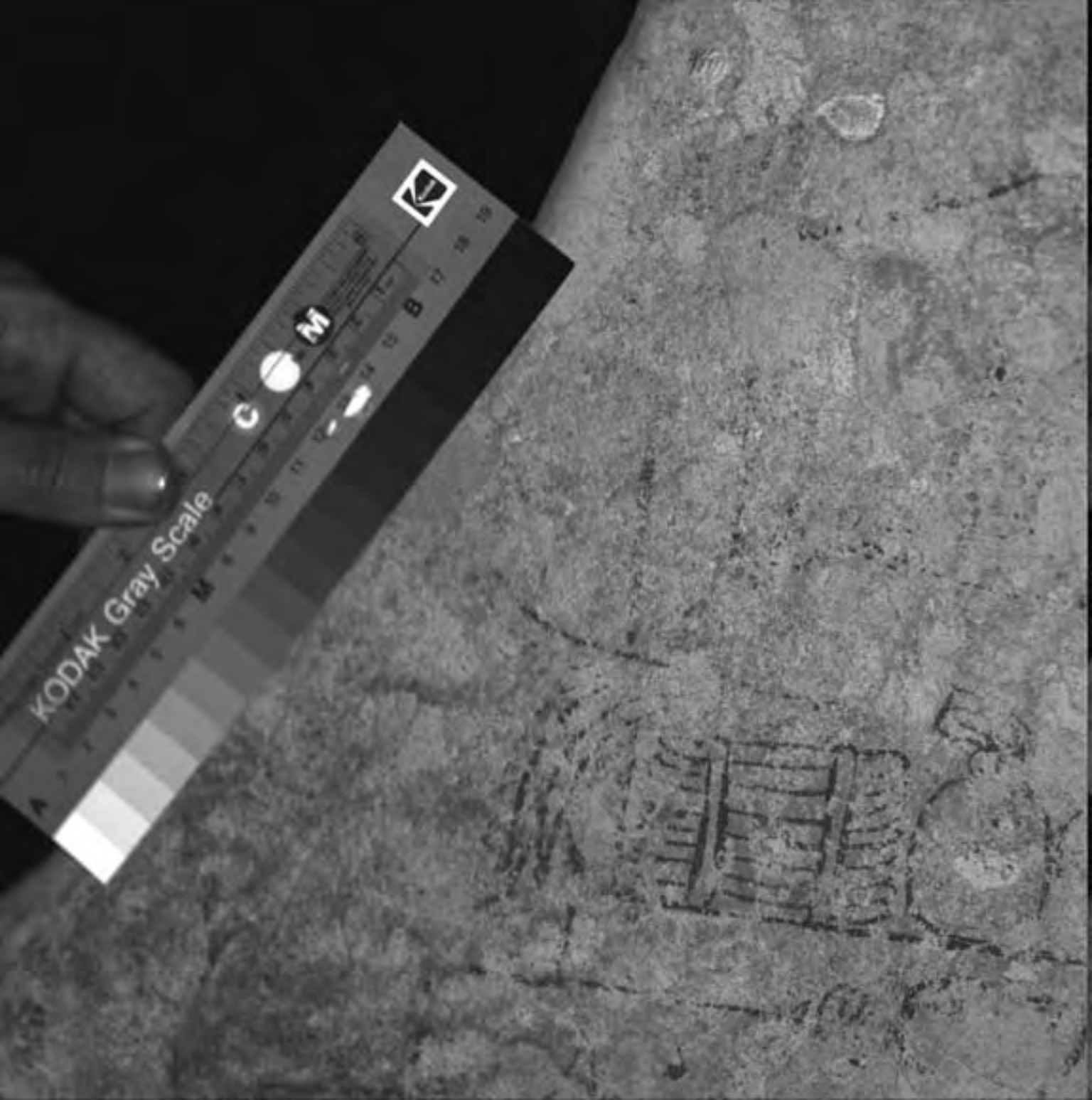






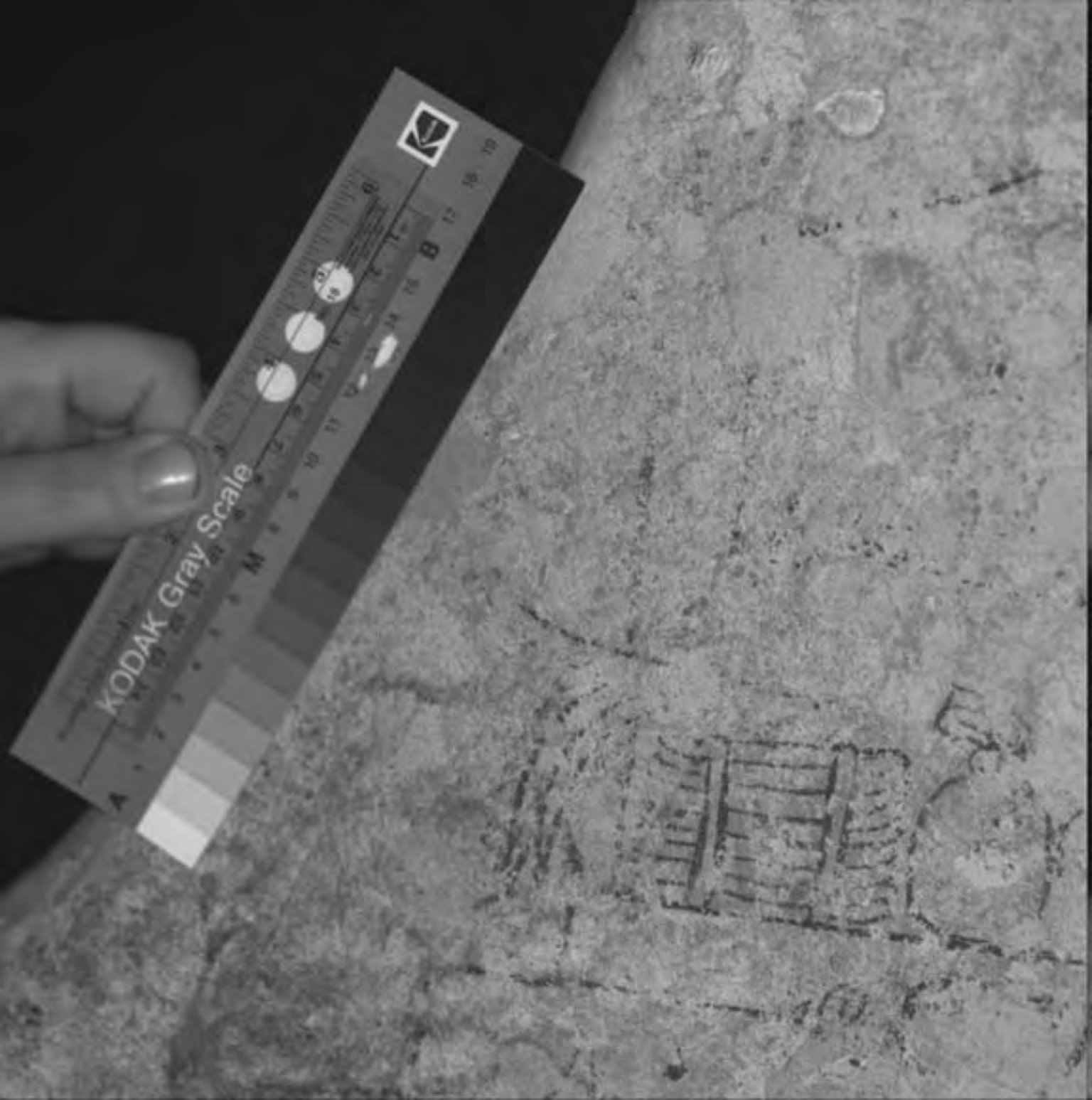


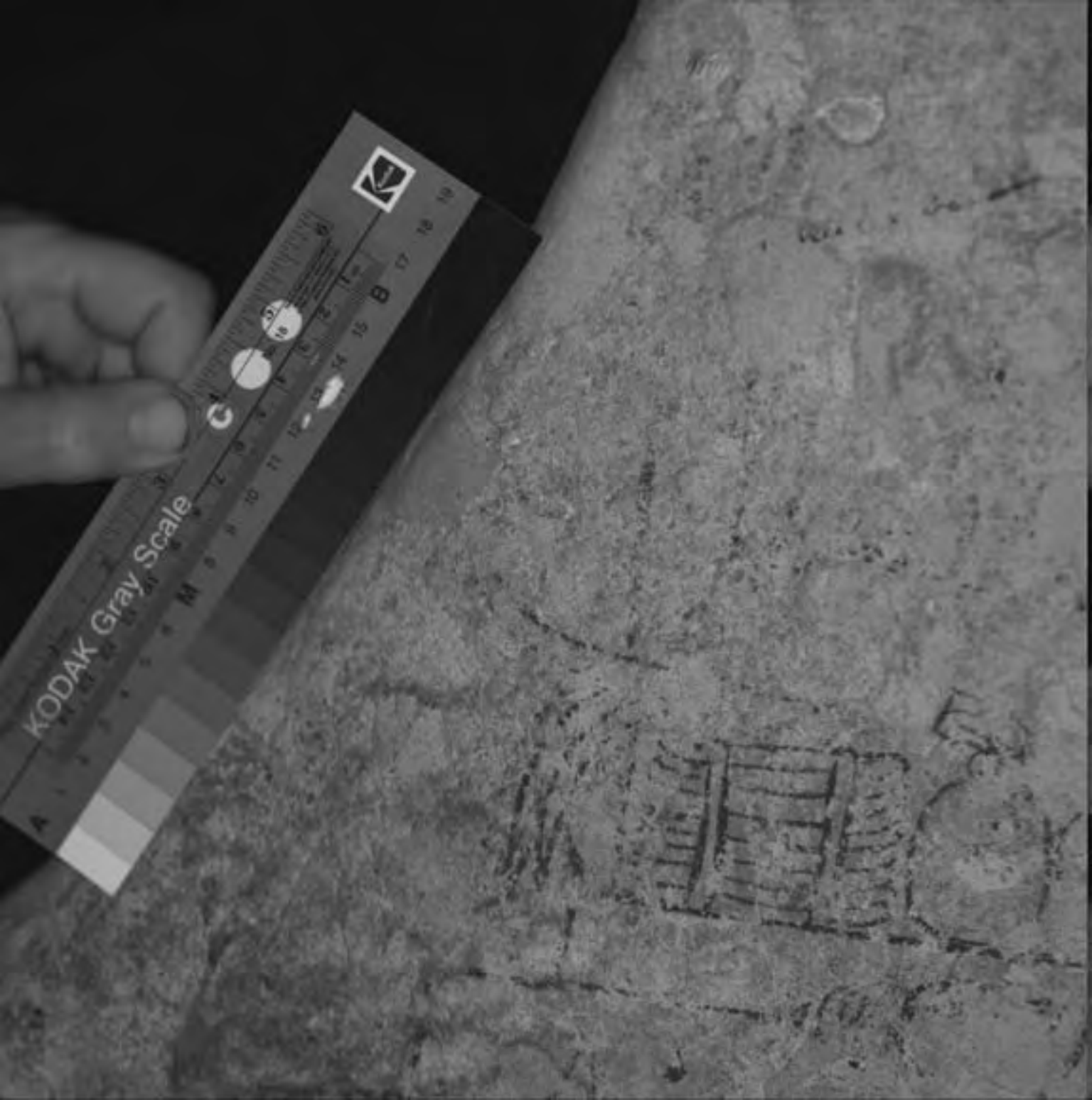


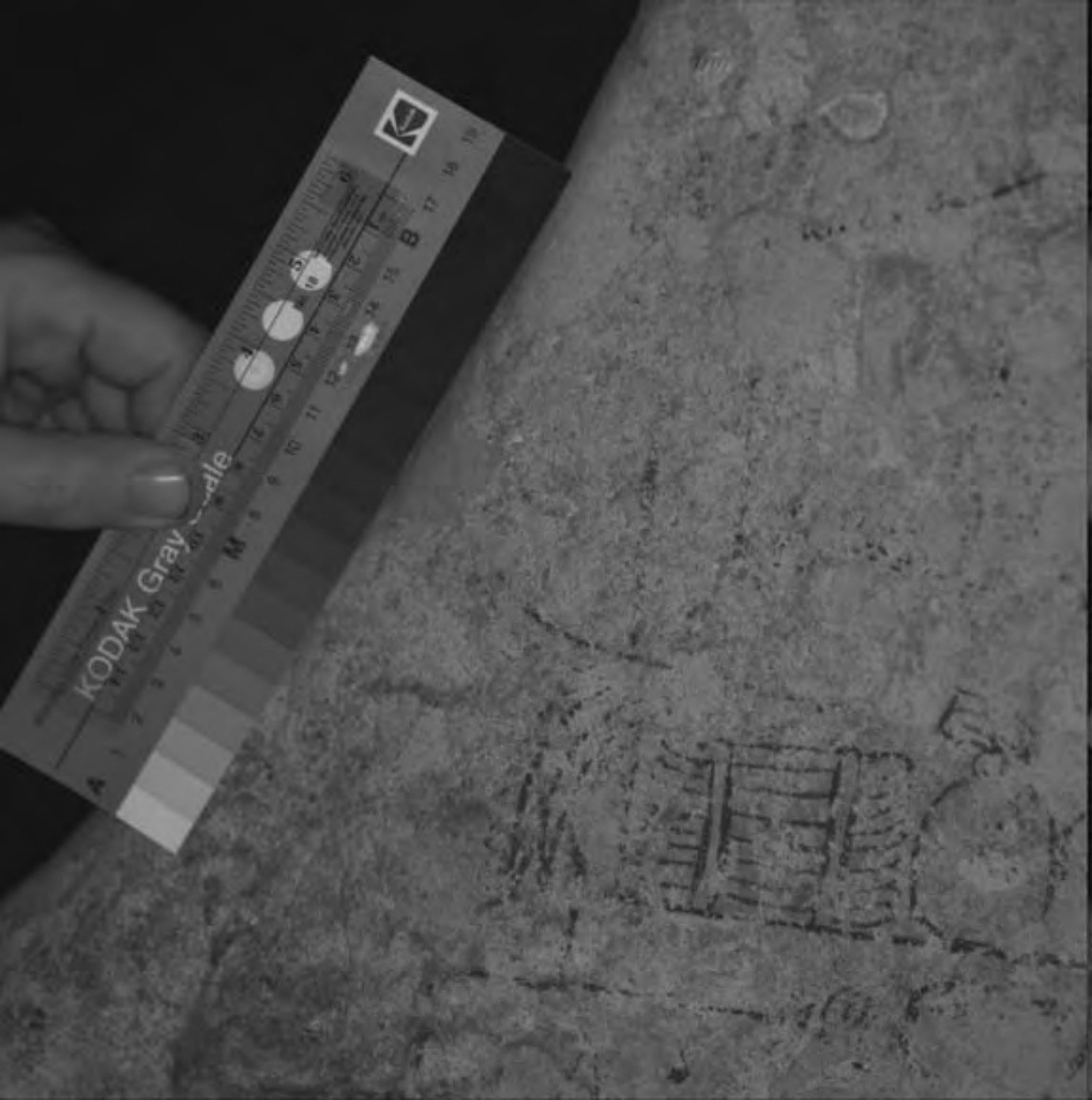












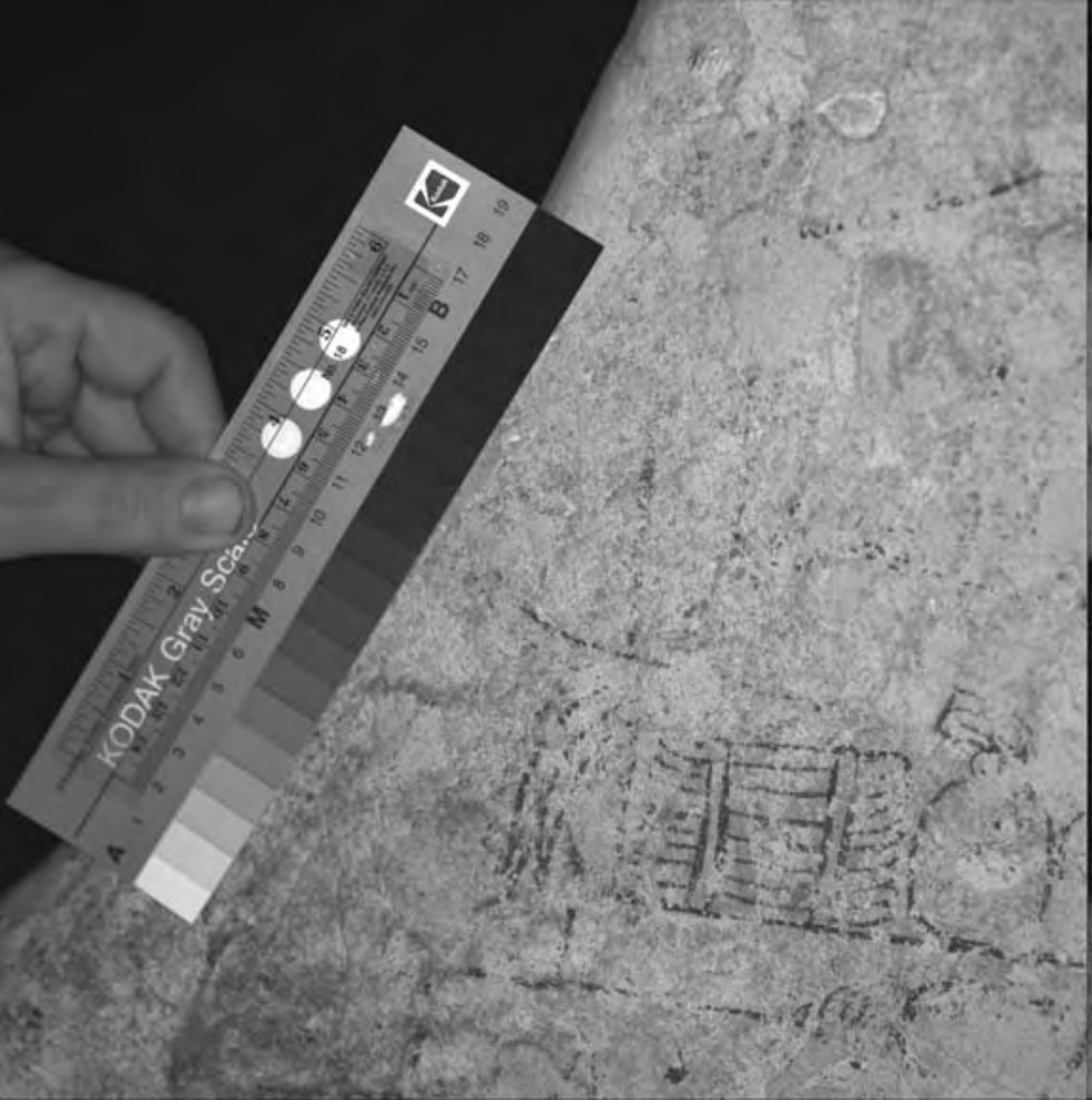


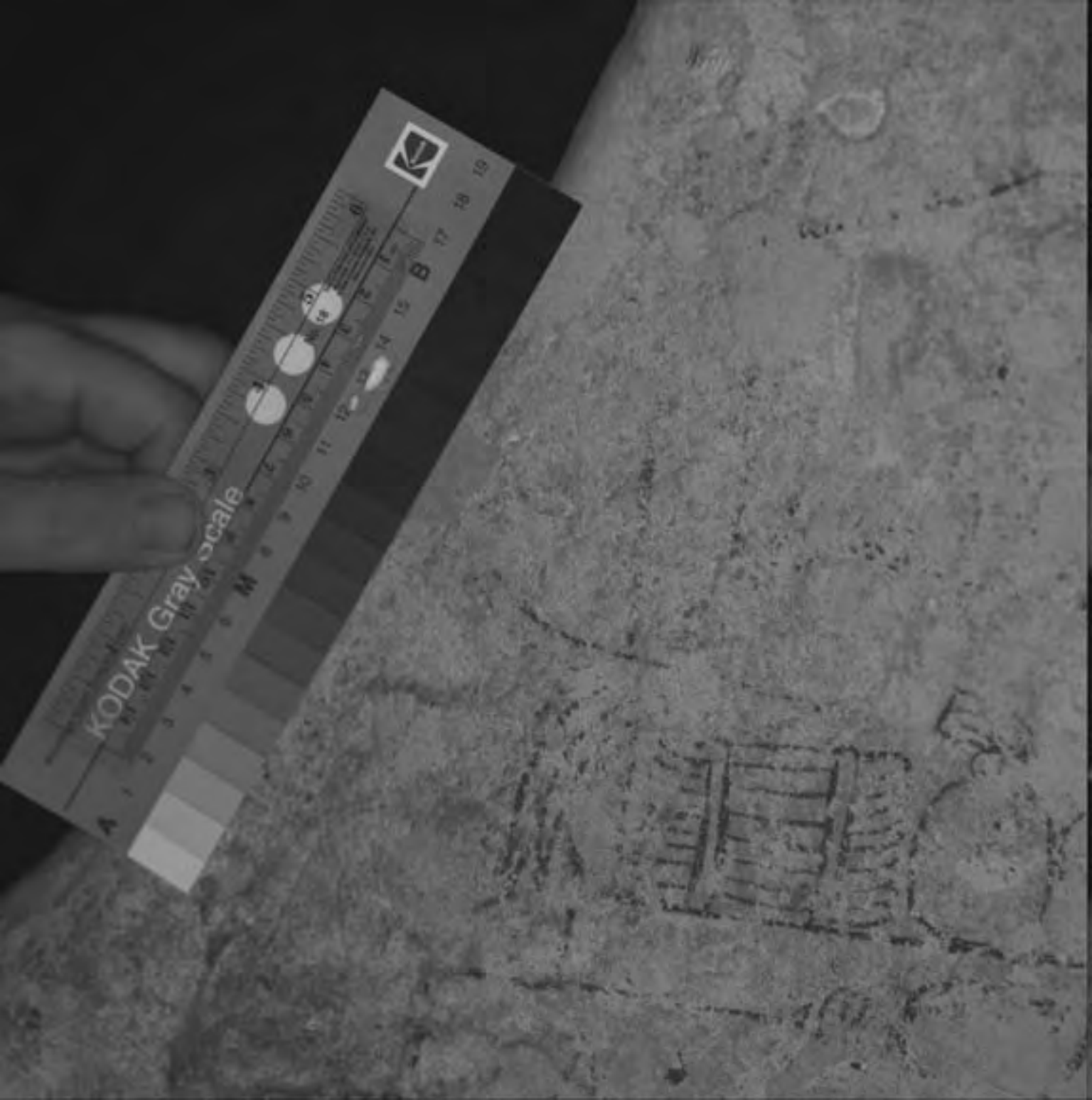
KODAK Gray Scale



0 1 2 3 4 5 6 7 8 9 10 11 12 13 14 15 16 17 18 19









KODAK Gray Scale



A

M

B

19

18

17

16

15

14

13

12

11

10

9

8

7

6

5

4

3

2

1