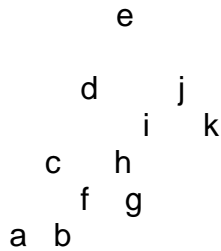


Drawing 5 was shot in 11 sequences.

Rather than try and describe how they overlap, the following very rough diagram can be used to try and locate the relationships.



This is very rough, but can perhaps give an idea. The rock is roughly triangular in shape.

The settings for series f were:

Inclination: - 37.5 degrees
Distance: 59"

File	Filter	Gain	Flash (1/x)
d05f__00	2	10	1
d05f__01	3	18	1
d05f__02	4	0	1
d05f__03	5	4	2
d05f__04	6	4	2
d05f__05	7	2	2
d05f__06	8	0	2
d05f__07	9	0	2
d05f__08	10	0	2
d05f__09	11	2	2
d05f__10	12	2	2
d05f__11	13	4	2
d05f__12	14	14	2

The settings for series g were:

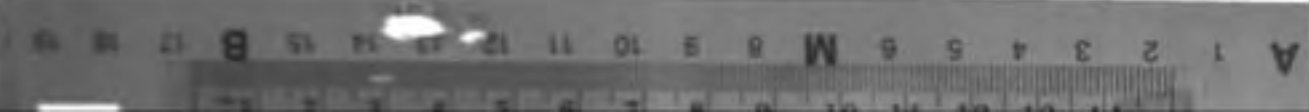
Inclination: - 41 degrees
Distance: 63"

File	Filter	Gain	Flash (1/x)
d05g__00	2	8	1
d05g__01	3	16	1
d05g__02	4	8	2
d05g__03	5	0	2
d05g__04	6	0	2
d05g__05	7	6	4
d05g__06	8	2	4
d05g__07	9	0	2
d05g__08	10	2	4
d05g__09	11	2	4
d05g__10	12	6	4
d05g__11	13	8	4
d05g__12	14	12	4

The settings for series h were:

Inclination: - 40 degrees
Distance: 55"

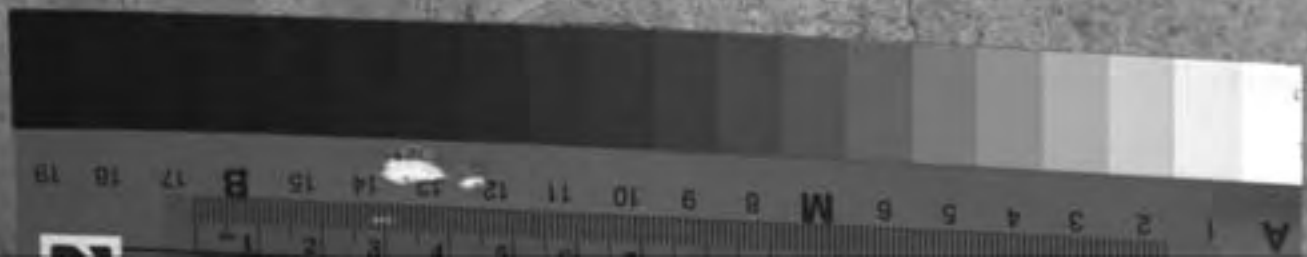
File	Filter	Gain	Flash (1/x)
d05h__00	2	16	2
d05h__01	3	18	1
d05h__02	4	8	2
d05h__03	5	4	2
d05h__04	6	4	2
d05h__05	7	2	2
d05h__06	8	4	4
d05h__07	9	4	4
d05h__08	10	4	4
d05h__09	11	6	4
d05h__10	11	8	4
d05h__11	12	8	4
d05h__12	13	4	2
d05h__13	14	10	2







A 1 2 3 4 5 6 M 8 9 10 11 12 13 14 15 B 17 18 19









KODAK Gray Scale

A 1 2 3 4 5 6 M 8 9 10 11 12 13 14 15 B 17 18 19





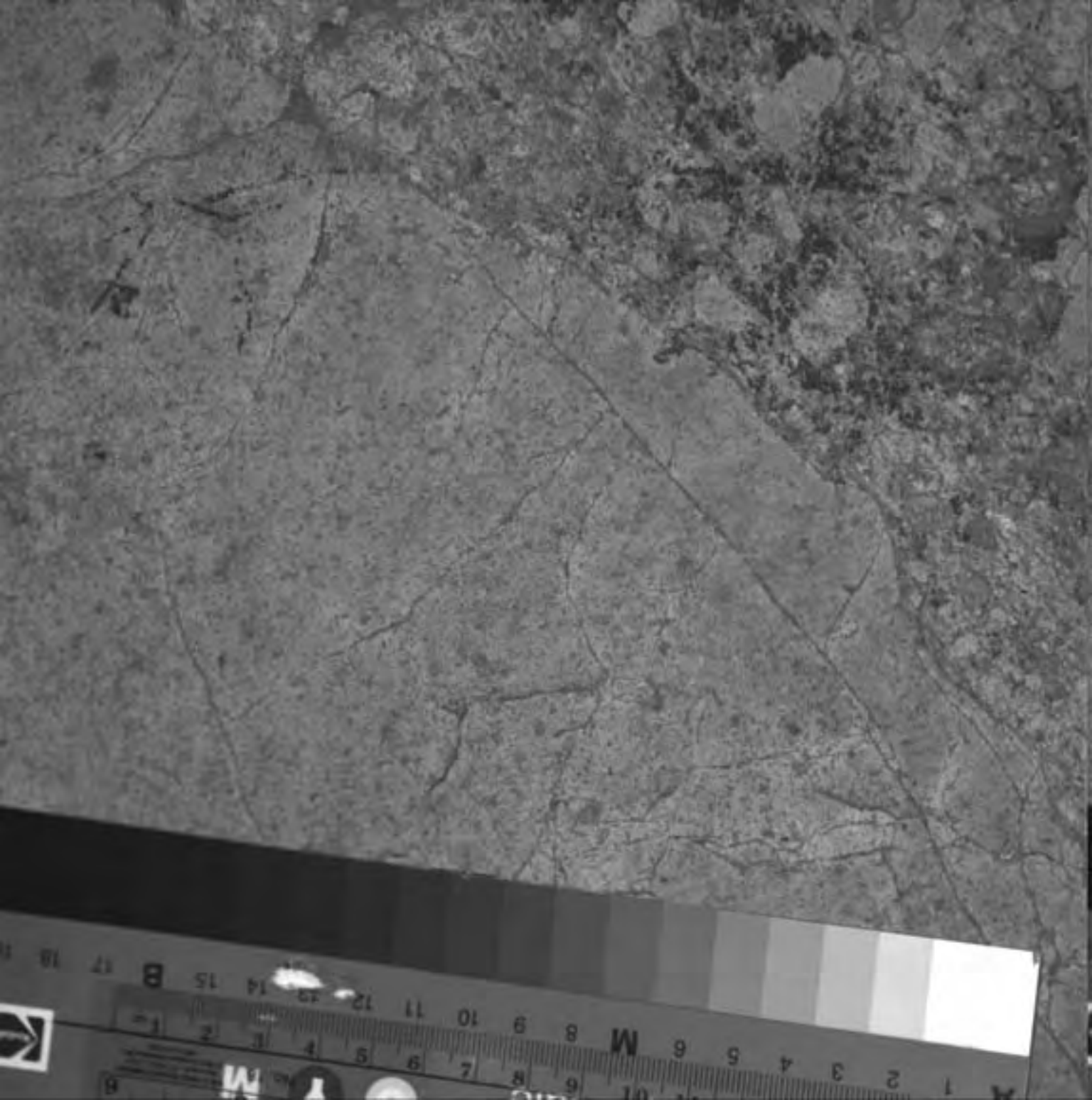


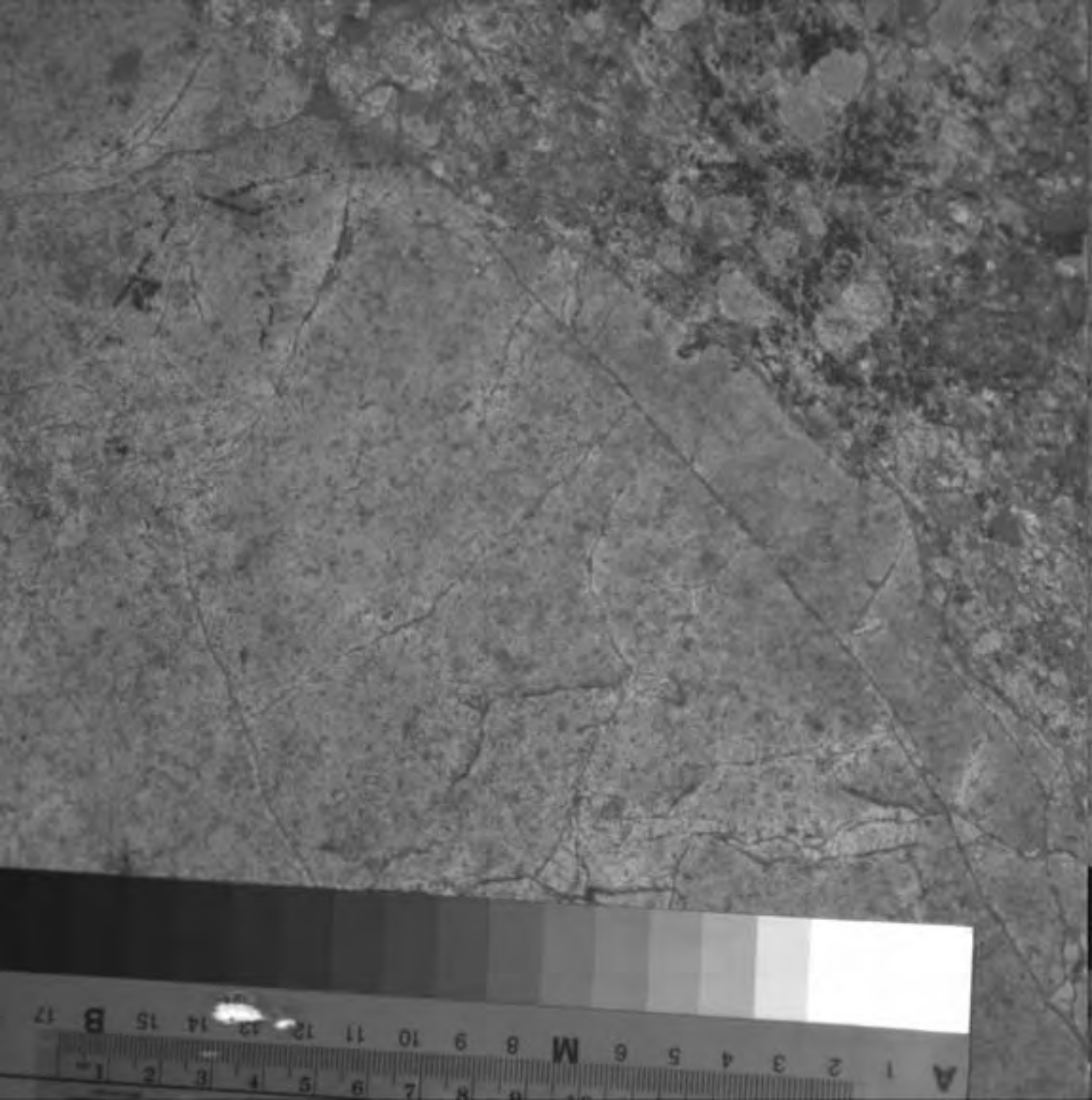




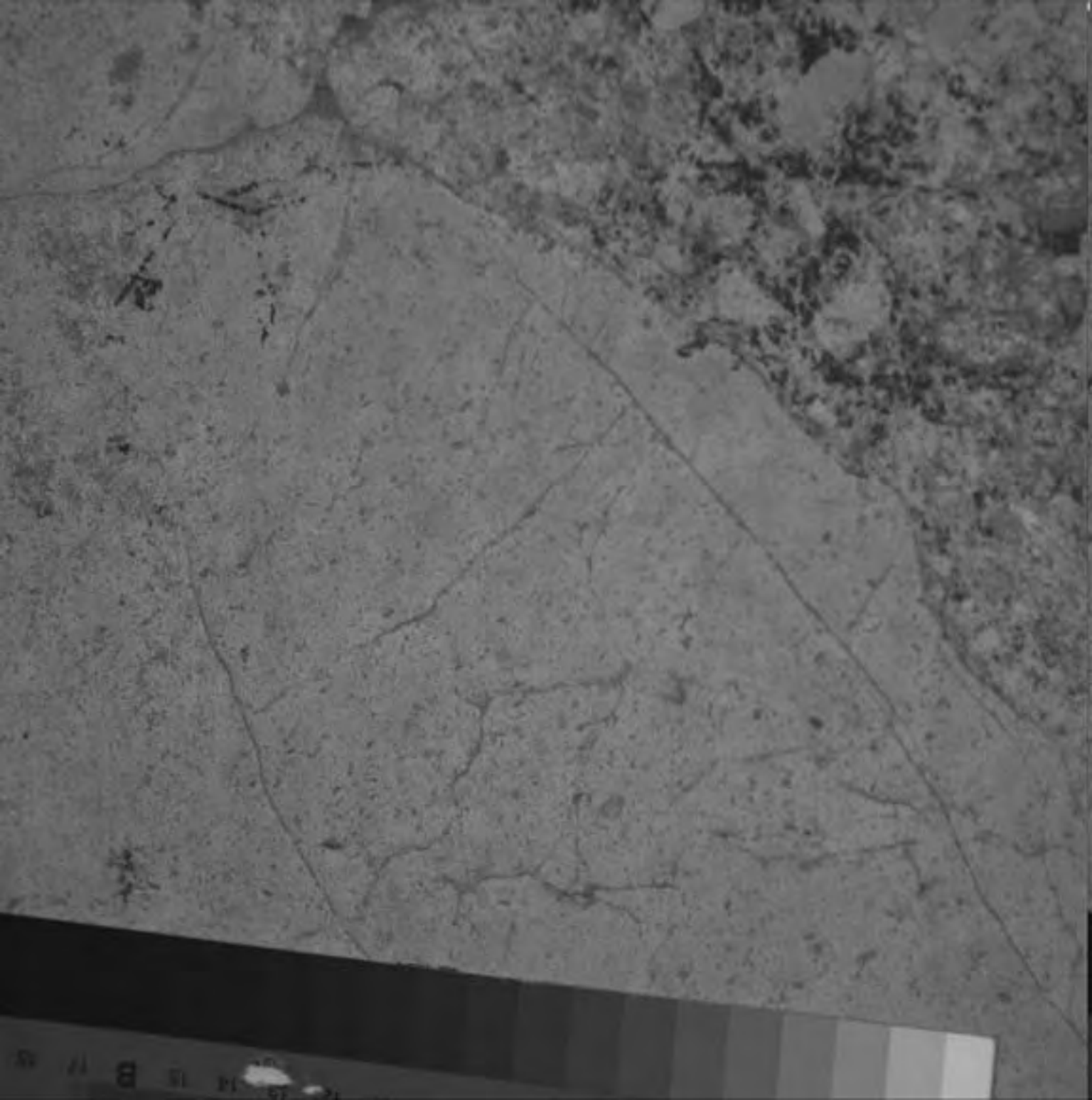




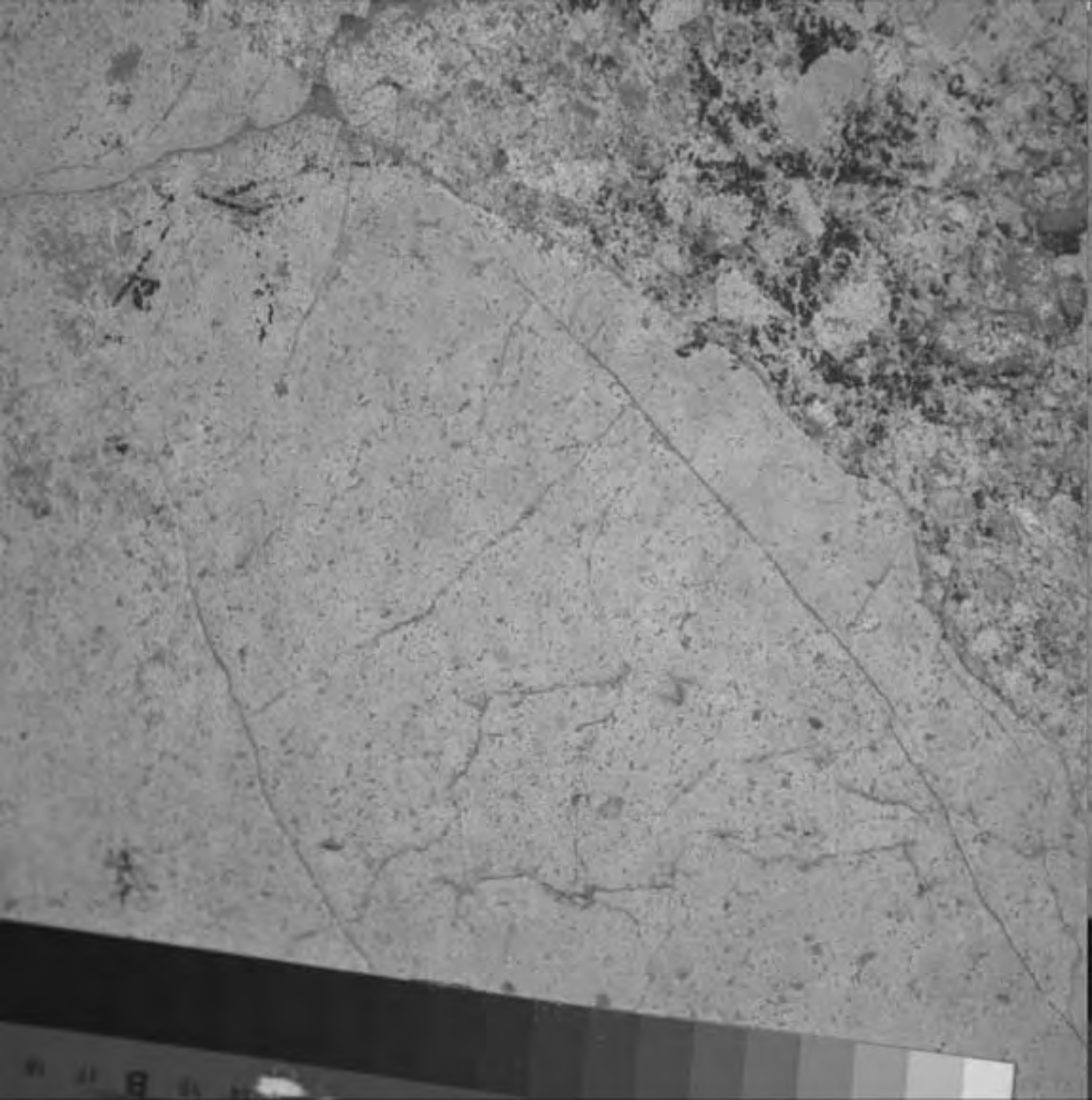




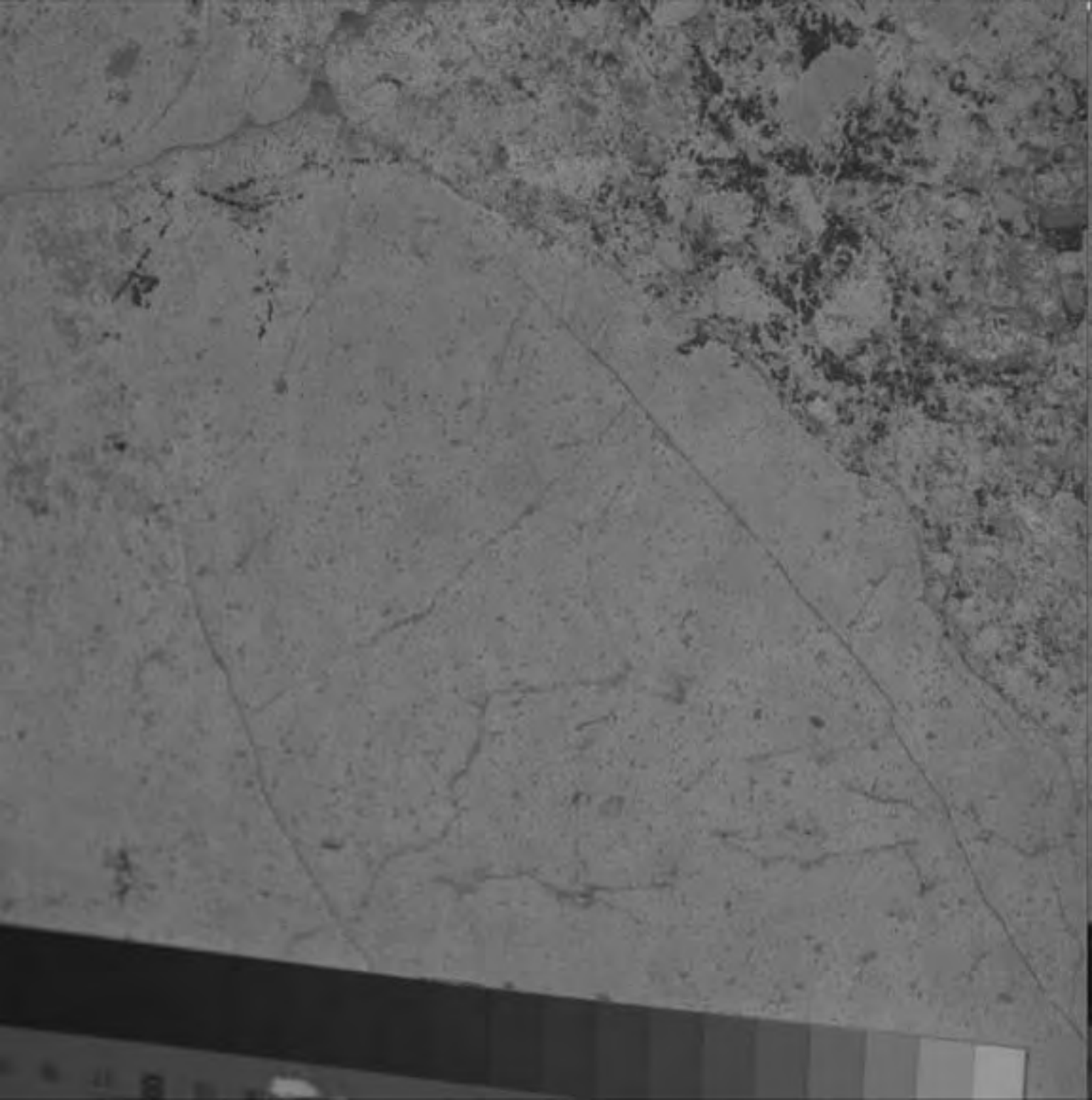




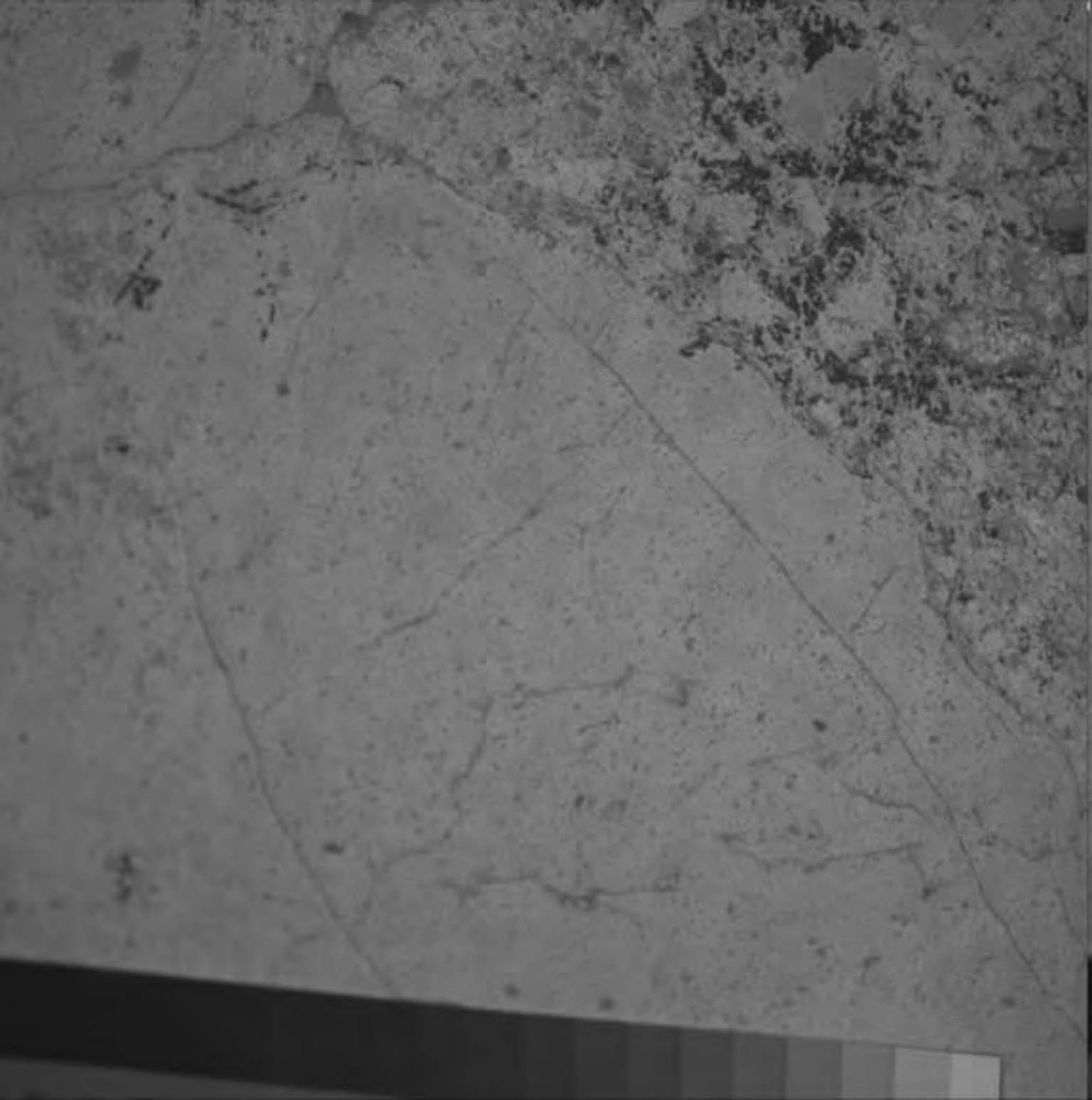


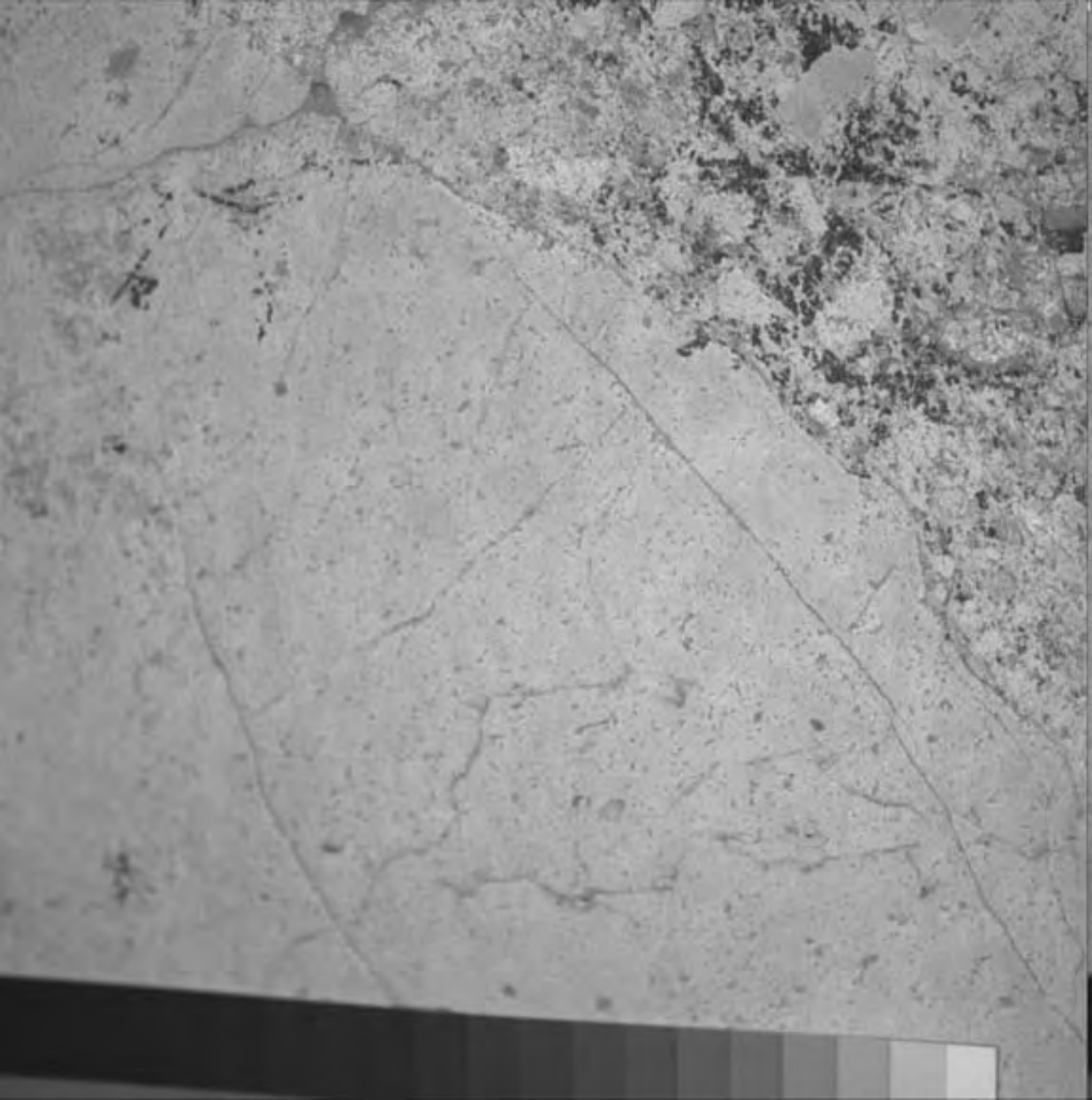


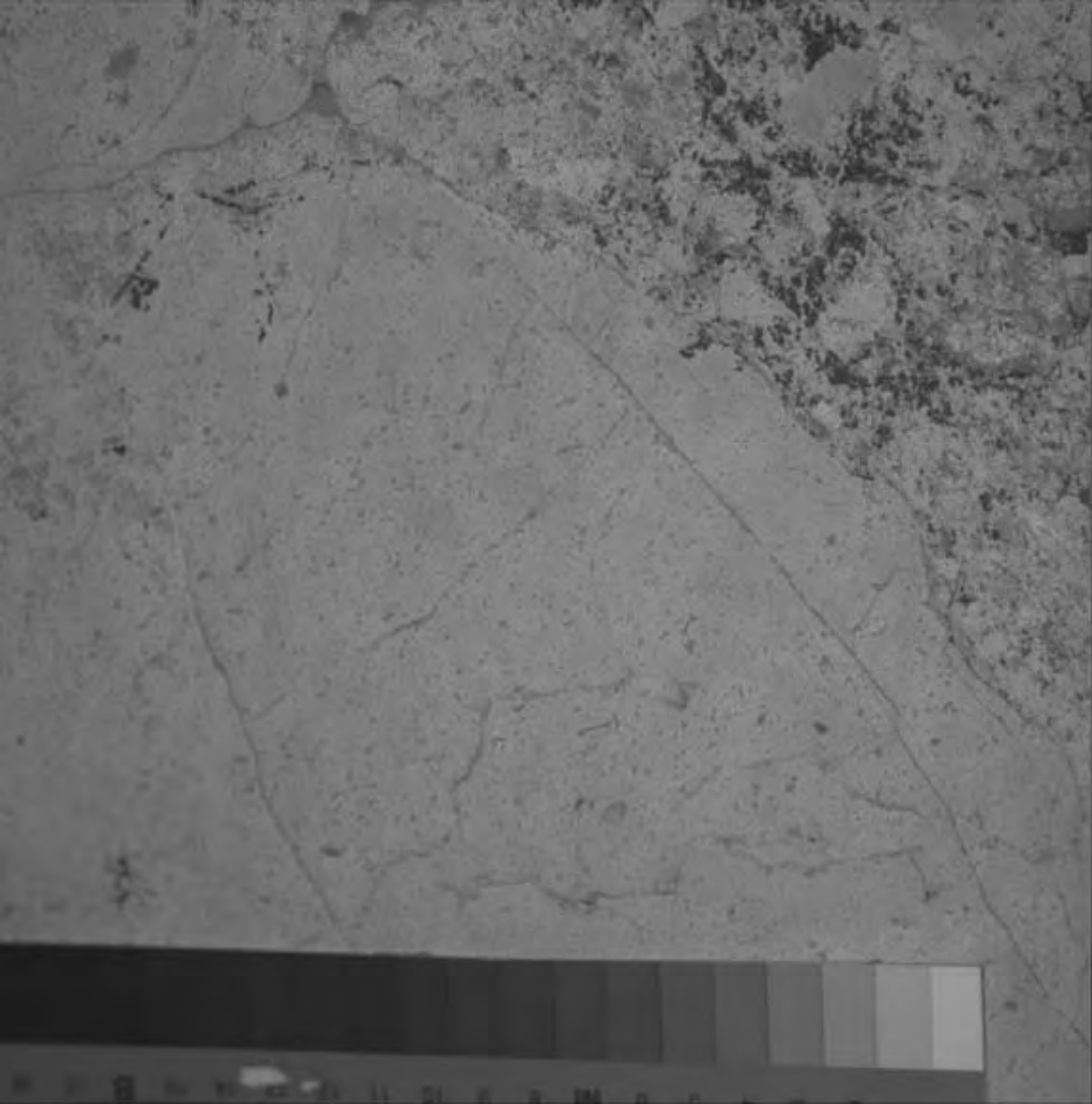


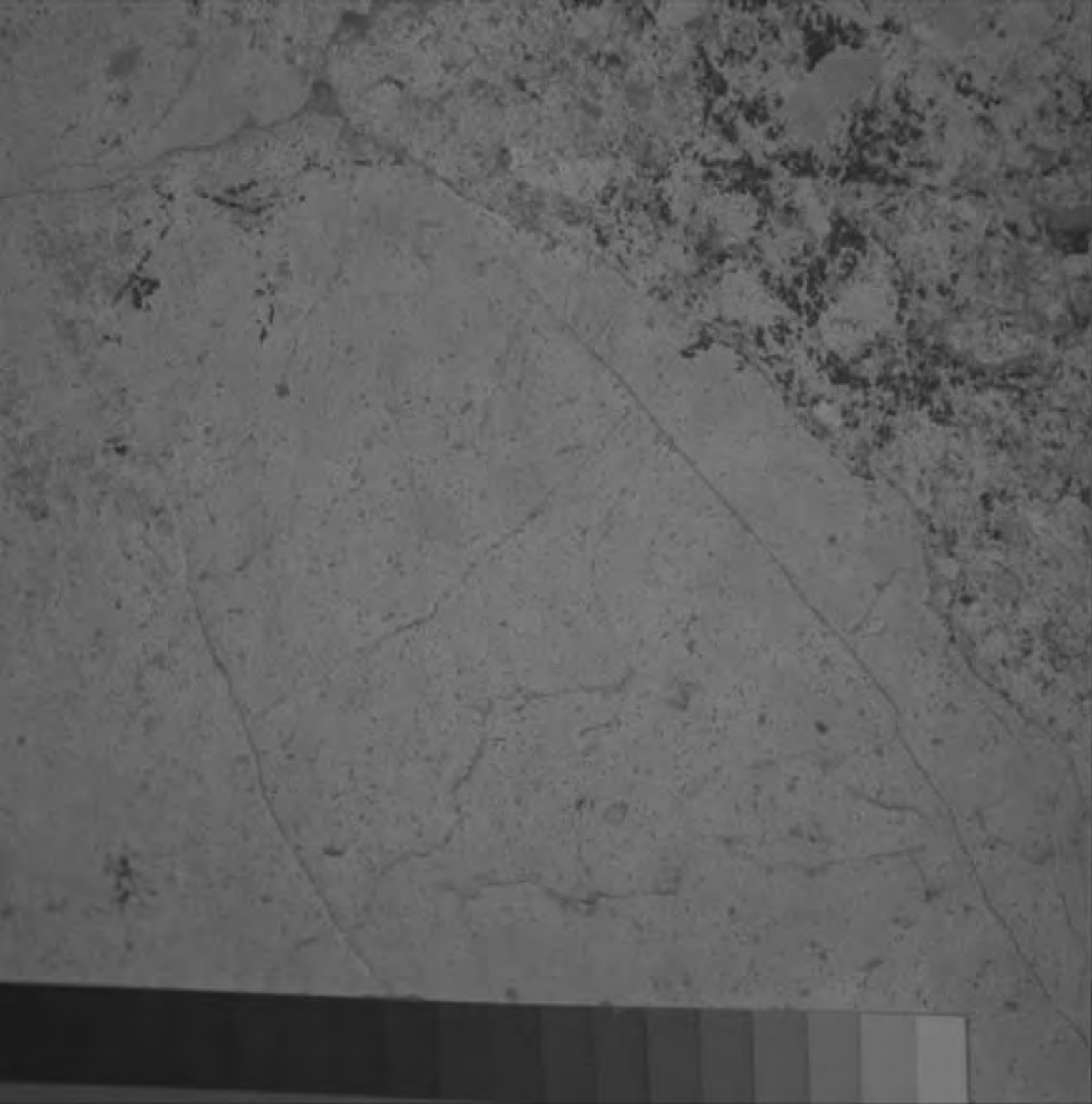
















01 01 11 8 01 11

