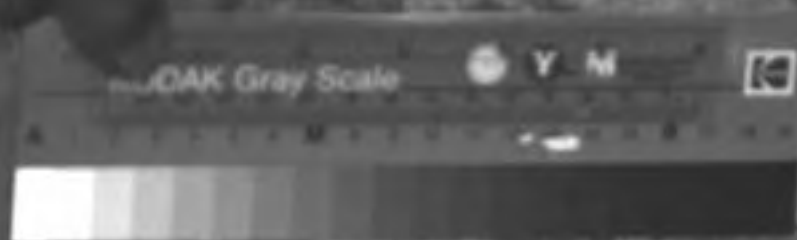


Drawings 61 and 62 are both included in the d61 sequence. Note the fading of drawing 61 in the infrared, while much of drawing 62 remains black in this region.

The sequence is as follows:

Inclination: unmeasured  
Distance from wall: unmeasured

File	Filter	Gain	Flash (1/x)
d61__00	2	16	1
d61__01	6	16	4
d61__02	7	8	2
d61__03	9	6	2
d61__04	10	6	2
d61__05	13	12	2
d61__06	4	8	1
d61__07	5	2	1



10  
4

10  
4

10  
4

10  
4

KODAK Gray Scale

C

M



DAK Gray Scale

C









63







JAK Gray Scale

C



M

