

Drawing 65 includes numerous glyph blocks and was shot in seven pieces. Series a and b are top (b) and bottom (a) of a group of three blocks near the center. Series f is to the right of a and b, and overlaps the right sides of a and b. Series g overlaps the top right hand side of f. Series c, d, and e capture the glyph blocks in the lower left hand side of drawing 65. Each series gets progressively lower, and further to the right (i.e. series d overlaps the lower right hand side of series c and series e overlaps the lower right hand side of series d.) The file "65c__00" is thought to be simply a naming error.

The sequence for series a is as follows:

Inclination: -0.5 degrees
 Distance from wall: 74"

File	Filter	Gain	Flash (1/x)
d65a__00	2	16	1
d65a__01	6	8	2
d65a__02	7	8	2
d65a__03	9	6	2
d65a__04	10	6	2
d65a__05	13	12	2
d65a__06	4	14	2
d65a__07	5	10	2

The sequence for series b is as follows:

Inclination: + 6 degrees
 Distance from wall: 63"

File	Filter	Gain	Flash (1/x)
d65b__00	2	16	1
d65b__01	6	8	2
d65b__02	7	12	2
d65b__03	9	10	2
d65b__04	10	4	2
d65b__05	13	10	2
d65b__06	4	12	2
d65b__07	5	10	2

The sequence for series c is as follows:

Inclination: - 7 degrees
Distance from wall: 69"

File	Filter	Gain	Flash (1/x)
d65c__00	2	16	1
d65c__01	6	10	2
d65c__02	7	10	2
d65c__03	9	6	2
d65c__04	10	6	2
d65c__05	13	10	2
d65c__06	4	14	2
d65c__07	5	10	2

The sequence for series d is as follows:

Inclination: -10.5 degrees
Distance from wall: 69"

File	Filter	Gain	Flash (1/x)
d65d__00	2	14	1
d65d__01	6	8	2
d65d__02	7	6	2
d65d__03	9	4	2
d65d__04	10	4	2
d65d__05	13	8	2
d65d__06	4	12	2
d65d__07	5	8	2

The sequence for series e is as follows:

Inclination: -10.5 degrees
Distance from wall: 69"

File	Filter	Gain	Flash (1/x)
d65e__00	2	14	1
d65e__01	6	8	2
d65e__02	7	6	2
d65e__03	9	4	2
d65e__05	10	4	2
d65e__06	13	8	2
d65e__07	4	12	2
d65e__08	5	8	2

(note:d65e__04 was probably recorded in error, but left in in case it wasn't)

The sequence for series f is as follows:

Inclination: unmeasured
Distance from wall: 85"

File	Filter	Gain	Flash (1/x)
d65f__00	2	16	1
d65f__01	6	8	2
d65f__02	7	6	2
d65f__03	9	4	2
d65f__04	10	4	2
d65f__05	13	12	2
d65f__06	4	14	2
d65f__07	5	10	2

The sequence for series g is as follows:

Inclination: + 7.5 degrees
Distance from wall: 85"

File	Filter	Gain	Flash (1/x)
d65g__00	2	18	1
d65g__01	6	10	2
d65g__02	7	8	2
d65g__03	9	6	2
d65g__04	10	6	2
d65g__05	13	12	2
d65g__06	4	14	2
d65g__07	5	10	2



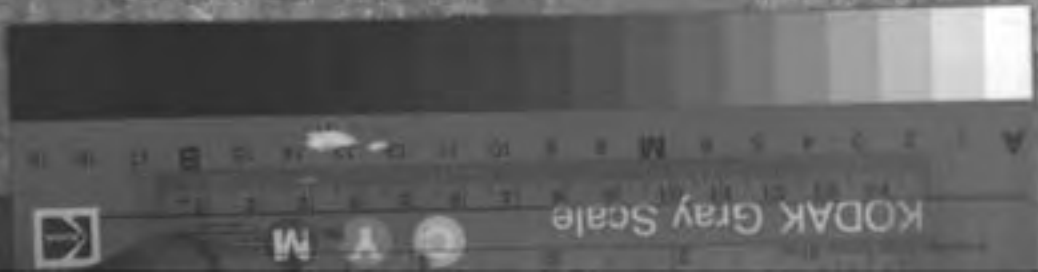






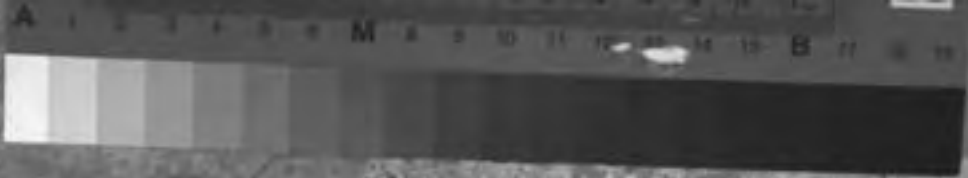
















D

4L

Handwritten markings, possibly a signature or initials, consisting of several overlapping loops and lines. The markings are dark and somewhat faded against the textured background.

















Handwritten text in a stylized, possibly cursive or decorative font, appearing as a vertical column of characters on a textured surface.

Handwritten text in a stylized, possibly cursive or decorative font, appearing as a vertical column of characters on a textured surface.





Handwritten text in a stylized, cursive script, possibly a signature or name, located in the upper right quadrant of the image.

Handwritten text in a stylized, cursive script, possibly a signature or name, located in the lower right quadrant of the image.



KODAK Gray Scale

10
9
8
7
6
5
4
3
2
1
M
B
17
16
15
14
13
12
11
10
9
8
7
6
5
4
3
2
1
M





C

KODAK Gray Scale

A

M

B

IT

15

14

13

12

11

10

9

8

7

6

5

4

3

2

1

10

9

8

7

6

5

4

3

2

1



A 1 2 3 4 5 6 M 8 9 10 11 12 13 14 15 B 17 18 19





























A 1 2 3 4 5 6 M 7 8 9 10 11 12 13 14 15 16 17 18
B 1 2 3 4 5 6 7 8 9 10 11 12 13 14 15 16 17 18





















KODAK Gray Scale



Y

M



A 1 2 3 4 5 6 7 8 9 10 11 12 B



KODAK Gray Scale

C M



DAK Gray Scale

C



JDAK Gray Scale



A 1 2 3 4 5 6 7 8 9 10 11 12



KODAK Gray Scale

C



DAK Gray Scale



A 1 2 3 4 5 6 7 8 9 10 11 12 13 14 15 16 17 18 19 B



DAK Gray Scale

G Y M



Vertical column of hieroglyphs on the left side of the image.

Vertical column of hieroglyphs in the center-left of the image.

Small cluster of hieroglyphs at the bottom center of the image.

Vertical column of hieroglyphs in the center-right of the image.

Vertical column of hieroglyphs on the right side of the image.

DAN Gray Scale

C M

