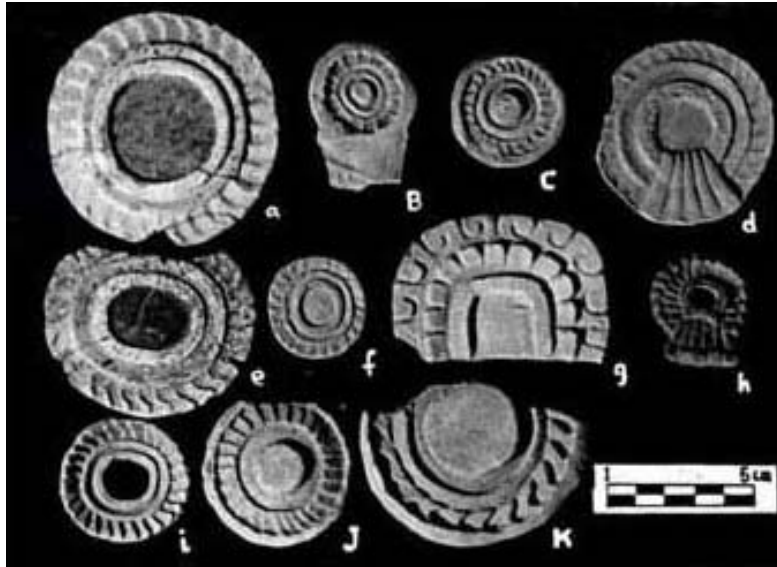


FAMSI © 2002: Saburo Sugiyama

Censer Symbolism and the State Polity in Teotihuacán



Research Year: 1998

Culture: Teotihuacán

Chronology: Late Pre-Classic to Late Classic

Location: Highland México

Site: Teotihuacán

Table of Contents

Introduction

Recording and Cataloging

Ritual Ceramics at a Workshop in the Ciudadela, Teotihuacán: Catalog

Presentation

Introduction

General Comments on Cataloging

Quantification Tables

Note on the Conventions Used for Captions

Catalog:

[I. Phytomorphic: Realistic and Schematized Representations](#)

II. Zoomorphic: Realistic and Schematized Representations

III. Anthropomorphic: Attributes of Deities and Characters

IV. Other Motifs: Different Representations and Symbols

V. Other Pieces: Censer Fragments and Molds

Bibliography

Data Base for Theater-type Censers Found in Teotihuacán and Abroad #1

"Adornos" and molds for censers from the "North Palace" in the Ciudadela,
Teotihuacán Archaeological Project 1980-82, INAH

"Adornos" and molds for censers from Compound "Group 5" of the Sector
N5W1,

Scholarship Program, INAH

"Adornos" and molds for censers from surface collection in Teotihuacán,
Teotihuacán Mapping Project

"Adornos" and molds for censers from the Project of the Feathered Serpent
Pyramid in 1988-89,

Arizona State University and INAH

Preliminary Comments

Sources Cited

I. *Phytomorphic: Realistic and Schematized Representations.*

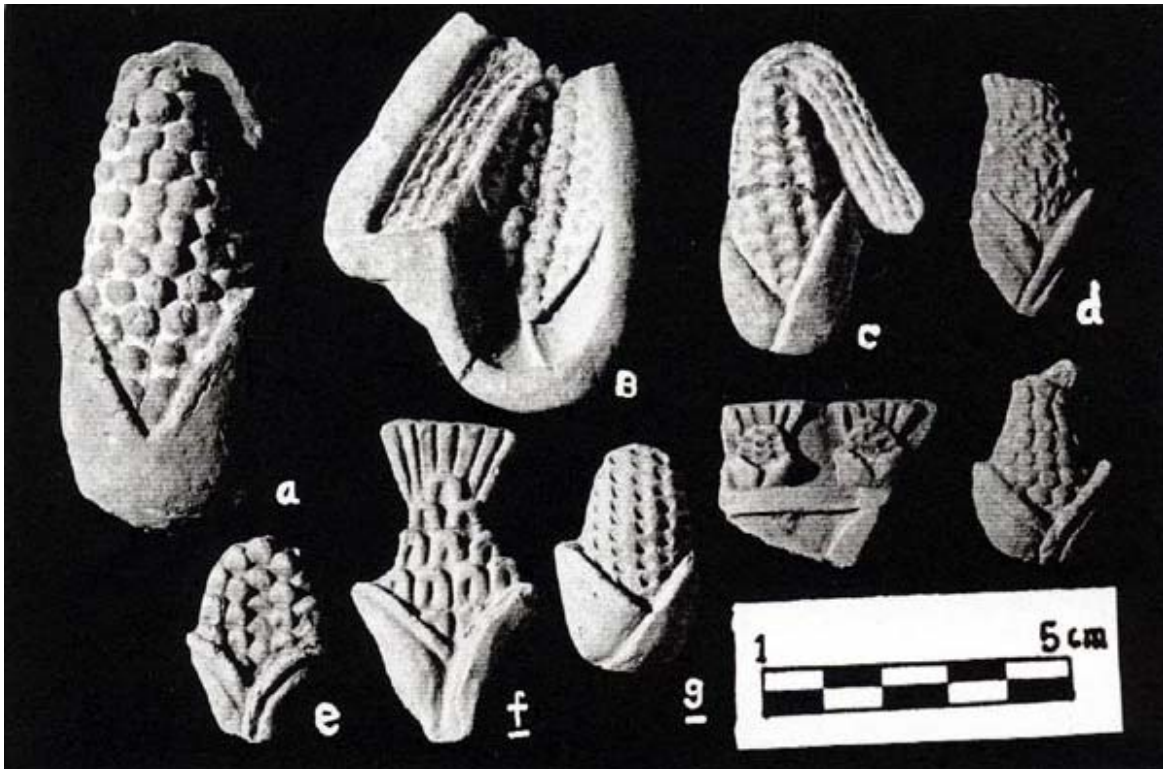


Photo 1. a, B, c, d, e, f, g, h, i. Maize ears, variants.



Photo 2. a. Fruit similar to cacao's, excepting for the presence of the peduncle. b. Squash.



Photo 3. A, b, c. Vegetable, variants.



Photo 4. A, b, c, d, e. Chile, variants.



Photo 5. a, b, c, d, e, f, g, h, i, j. Possible cacao fruits. k. Fruit.

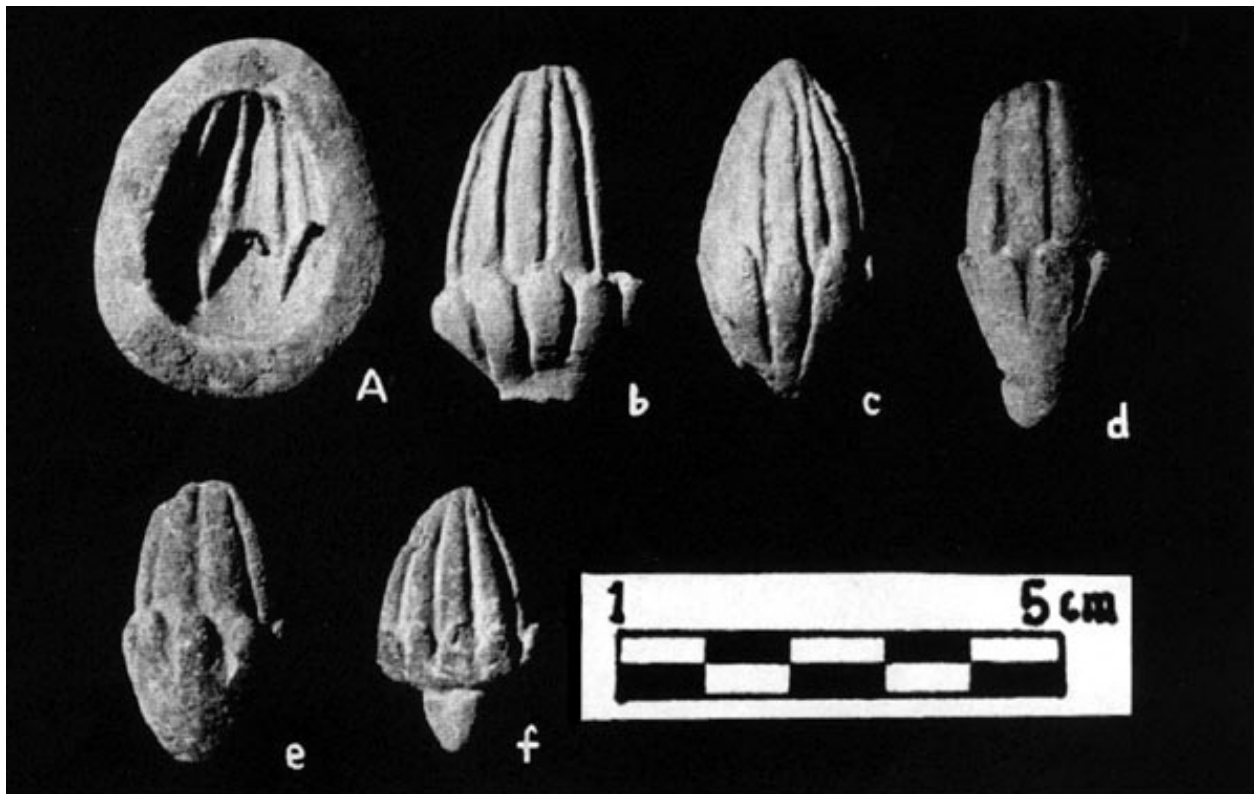


Photo 6. A, b, c, d, e, f. Fruits.

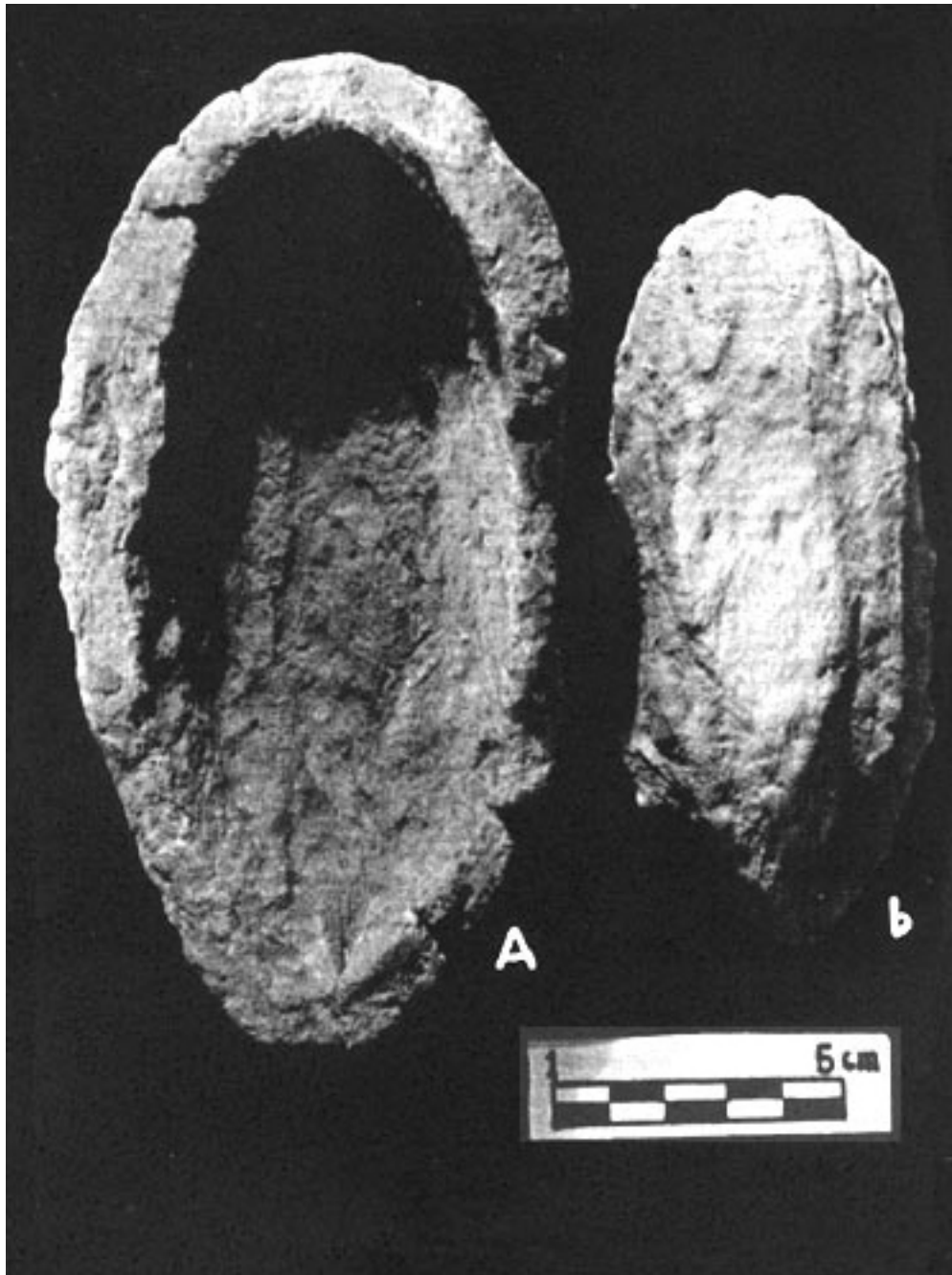


Photo 7. A, B. Cacao ear. The prehispanic mold was elaborated with a real cacao ear.



Photo 8. A, b, c. Cactaceous.

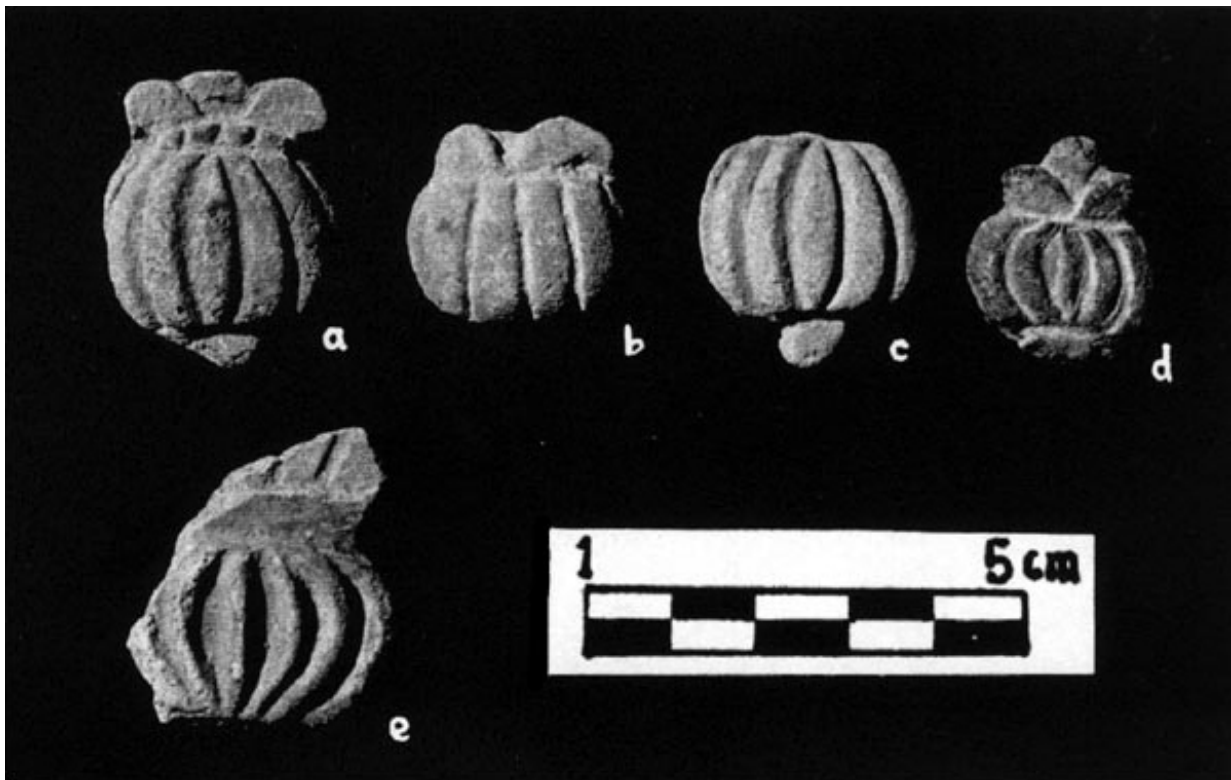


Photo 9. a, b, c, d, e. Cactaceous, variants.

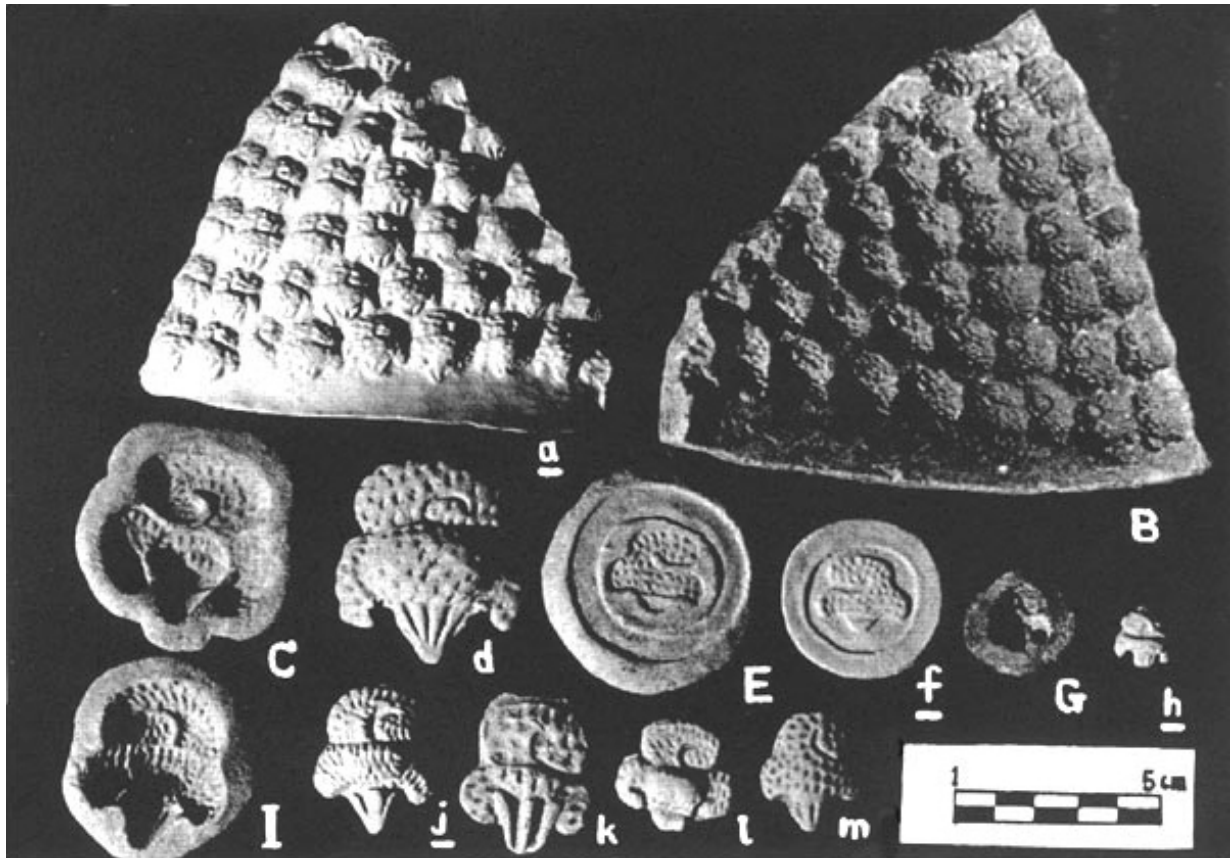


Photo 10. a , B, C, d, E, f , G, h , I, j , k, l, m. Probable cotton flower, variants.

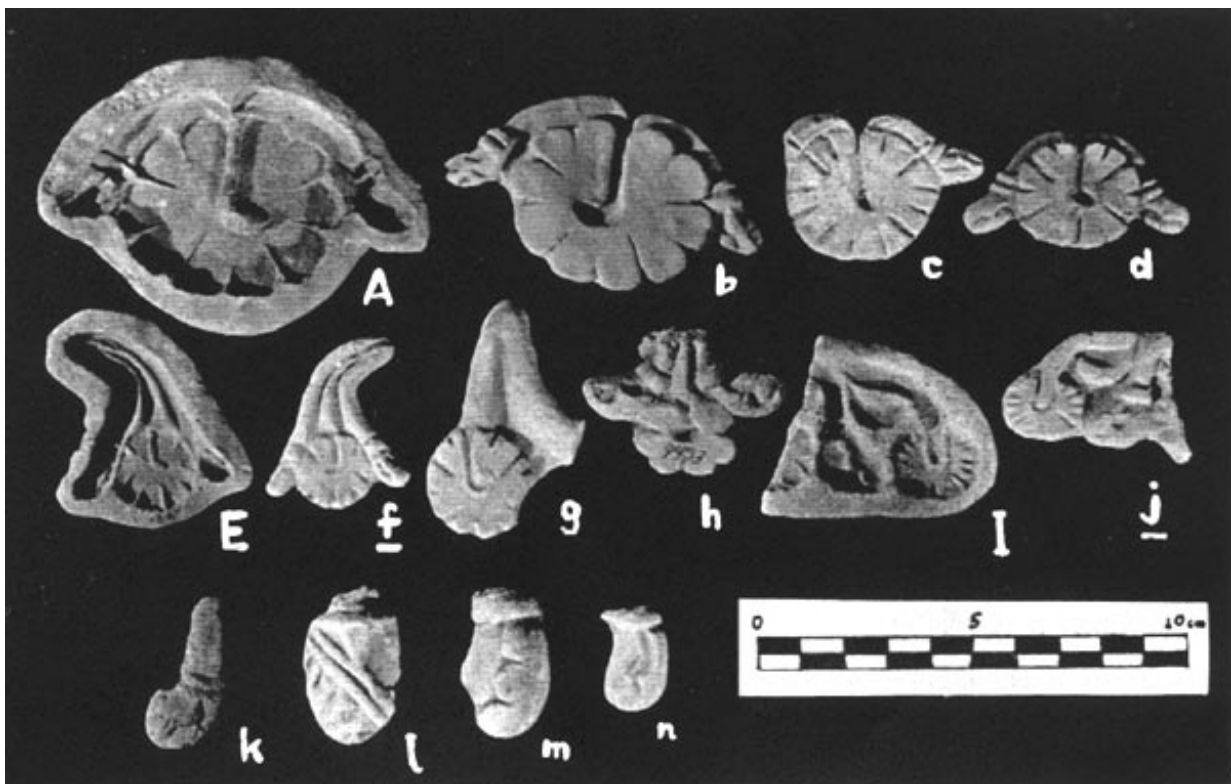


Photo 11. A, b , c, d, E, f , g, h, I, j , k, l, m, n. Water lilies.

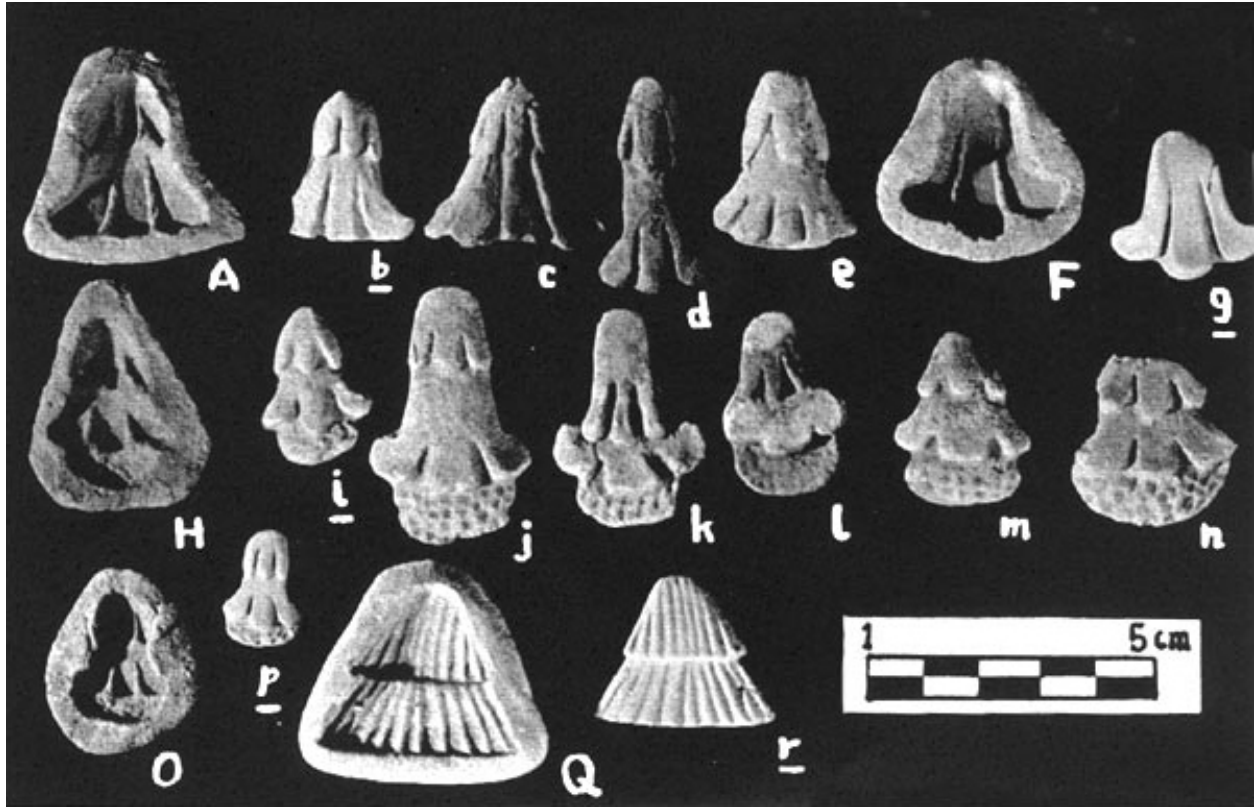


Photo 12. A, b, c, d, e, F, g, H, i, j, k, l, m, n, O, p, Q, r. Flowers.

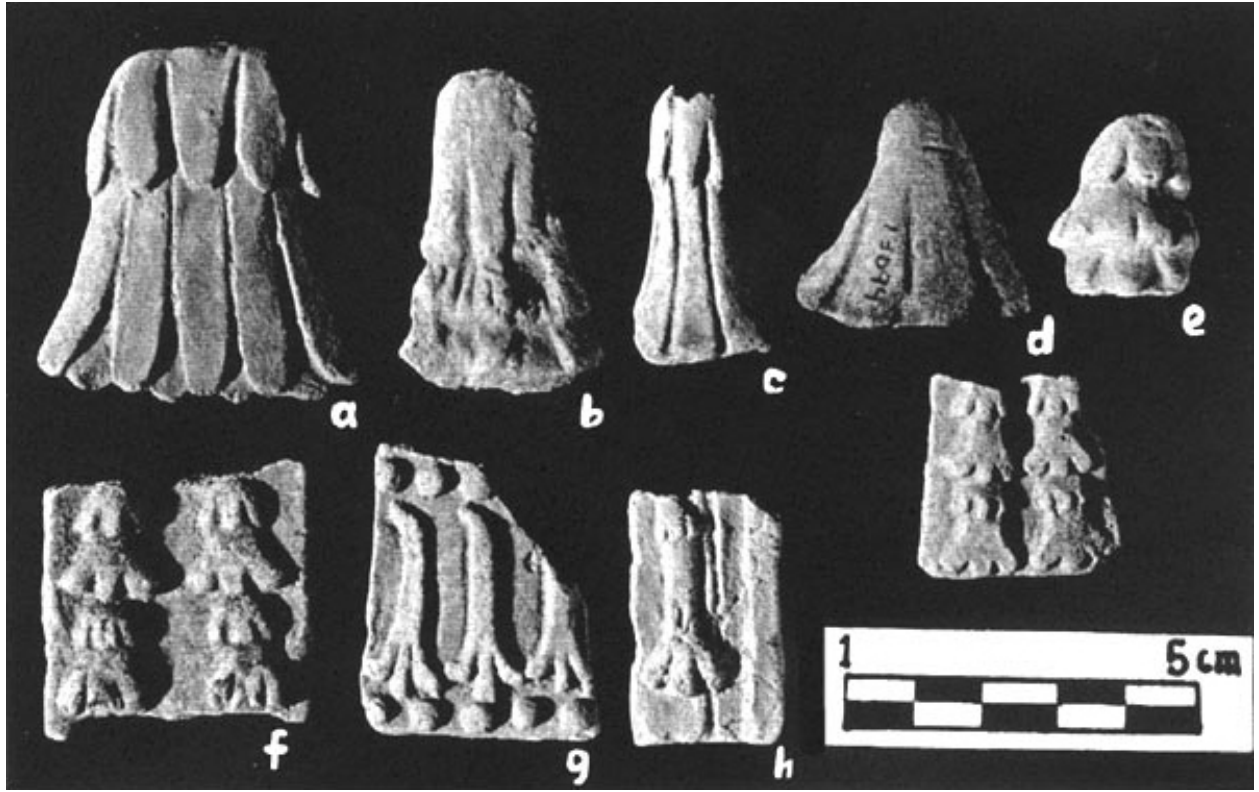


Photo 13. a, b, c, d, e, f, g, h, i. Flowers, variants.



Photo 14. A, b, c, D, e. Branches with leaves and one flower.

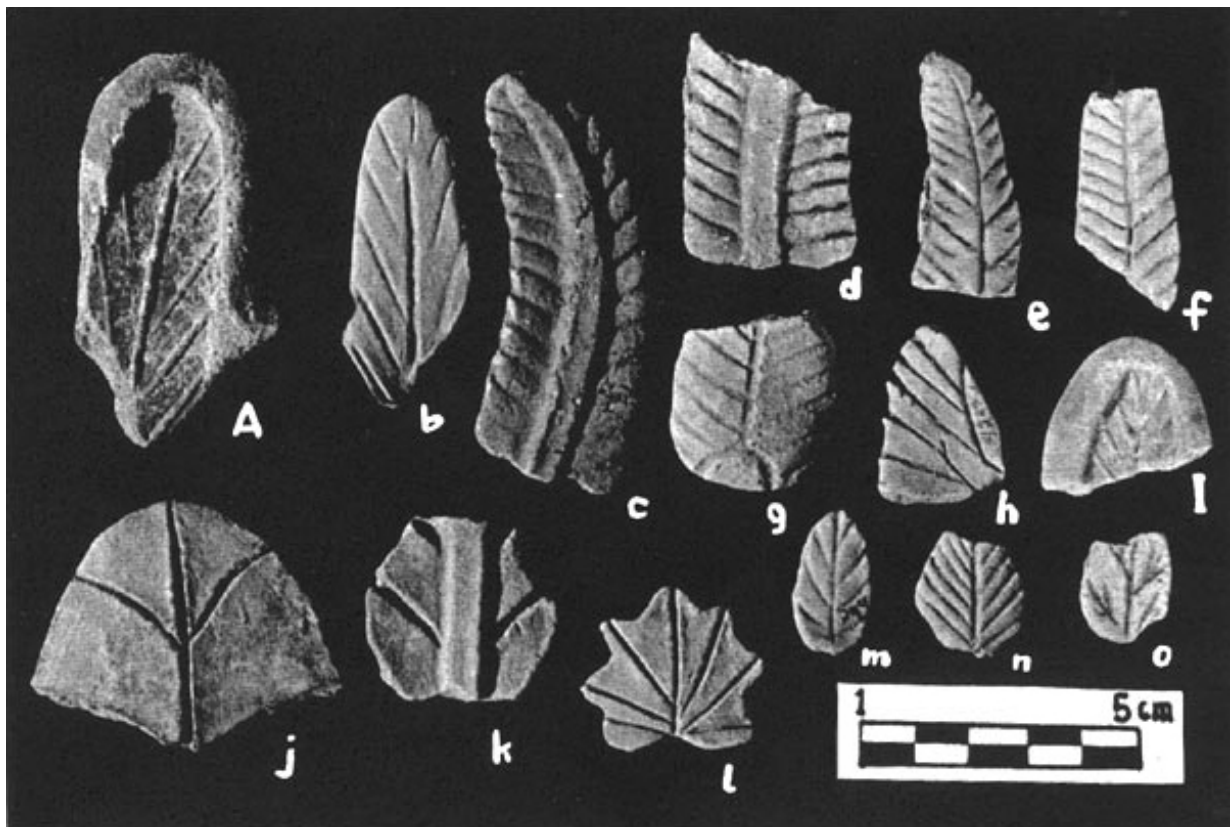


Photo 15. A, b, c, d, e, f, g, h, i, j, k, l, m, n, o. Leaves, variants.



Photo 16. a. Flower with a central mouth from which two virguled words emerge.