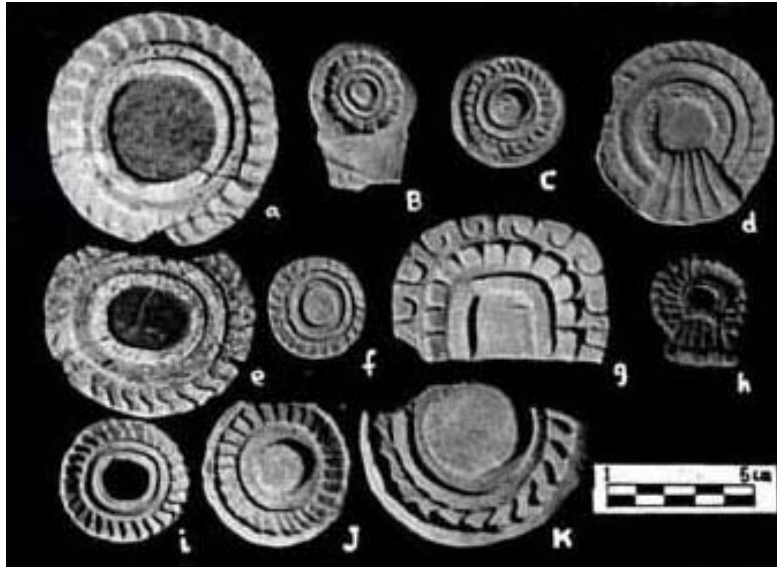


FAMSI © 2002: Saburo Sugiyama

Censer Symbolism and the State Polity in Teotihuacán



Research Year: 1998

Culture: Teotihuacán

Chronology: Late Pre-Classic to Late Classic

Location: Highland México

Site: Teotihuacán

Table of Contents

Introduction

Recording and Cataloging

Ritual Ceramics at a Workshop in the Ciudadela, Teotihuacán: Catalog

Presentation

Introduction

General Comments on Cataloging

Quantification Tables

[Note on the Conventions Used for Captions](#)

Catalog:

I. Phytomorphic: Realistic and Schematized Representations

[II. Zoomorphic: Realistic and Schematized Representations](#)

III. Anthropomorphic: Attributes of Deities and Characters

IV. Other Motifs: Different Representations and Symbols

V. Other Pieces: Censer Fragments and Molds

Bibliography

Data Base for Theater-type Censers Found in Teotihuacán and Abroad #1
"Adornos" and molds for censers from the "North Palace" in the Ciudadela,
Teotihuacán Archaeological Project 1980-82, INAH
"Adornos" and molds for censers from Compound "Group 5" of the Sector
N5W1,
Scholarship Program, INAH
"Adornos" and molds for censers from surface collection in Teotihuacán,
Teotihuacán Mapping Project
"Adornos" and molds for censers from the Project of the Feathered Serpent
Pyramid in 1988-89,
Arizona State University and INAH
Preliminary Comments
Sources Cited

Note on the Conventions Used for Captions

Considering this is a collection whose origin was a workshop fully dedicated to mold production, most pieces presented are molds and reproductions.

In those cases where only the mold could be recovered, and to obtain examples of the pieces involved, reproductions were made with the clay that modern potters from the village of San Sebastián Xolalpan nowadays use.

An alphabetical order was adopted for the reading of captions, making reference to what we have enunciated in the previous lines:

Therefore:

- A. Capital letters indicate: **Prehispanic Mold.**
- b. Small letters indicate: **Prehispanic Molded Reproduction.**
- c. Underlined small letters indicate: **Modern Reproduction Accomplished with a Prehispanic Mold.**

In the case of **Molded** pieces, they will be indicated throughout the text; to the effects of making comparisons of pieces between two photos, we have indicated: See Photo No....

Example:

- Photo No. 1.
 - B. **Mold.**
 - a, c, d, e, h, i. **Prehispanic Molded Reproduction.**
 - f, g. **Modern Reproduction Made with a Prehispanic Mold.**

II. Zoomorphic: Realistic and Schematized Representations.



Photo 17. a, B, c, D, e, f, g. Birds, variants.

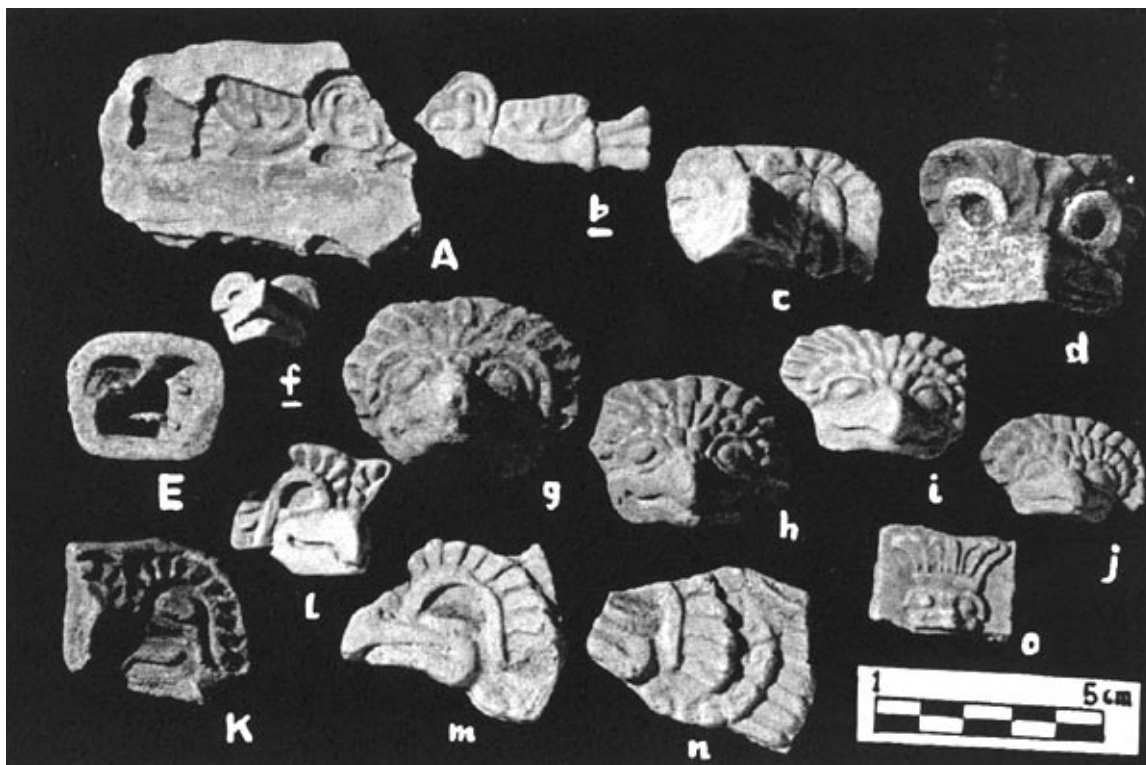


Photo 18. A, b. Bird, the body can be entirely seen. c, d, E, f, g, h, i, j, K, l, m, n, o. Bird heads, front and in profile.

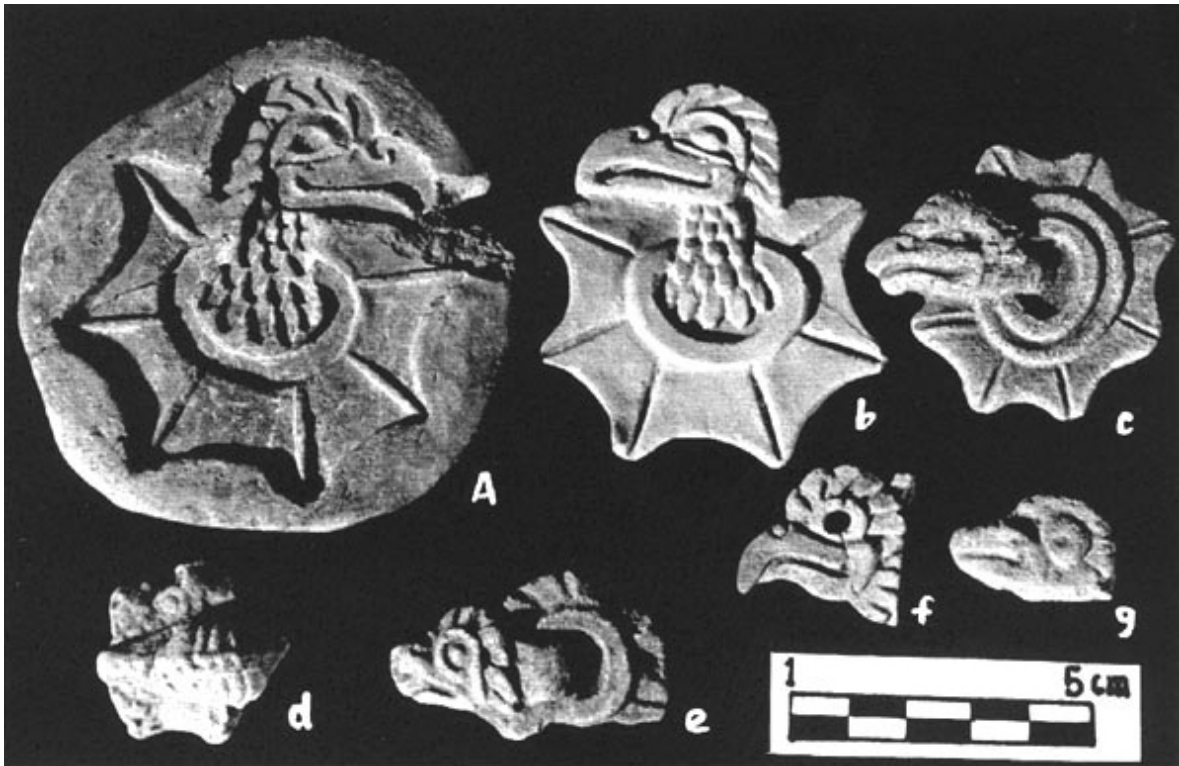


Photo 19. A, b, c. Bird heads, emerging from a figure with a central circle. See [Photo 155](#). d. Turkey head seen from above. e. Bird head emerging from a circular figure with feathers. f, g. Bird heads.

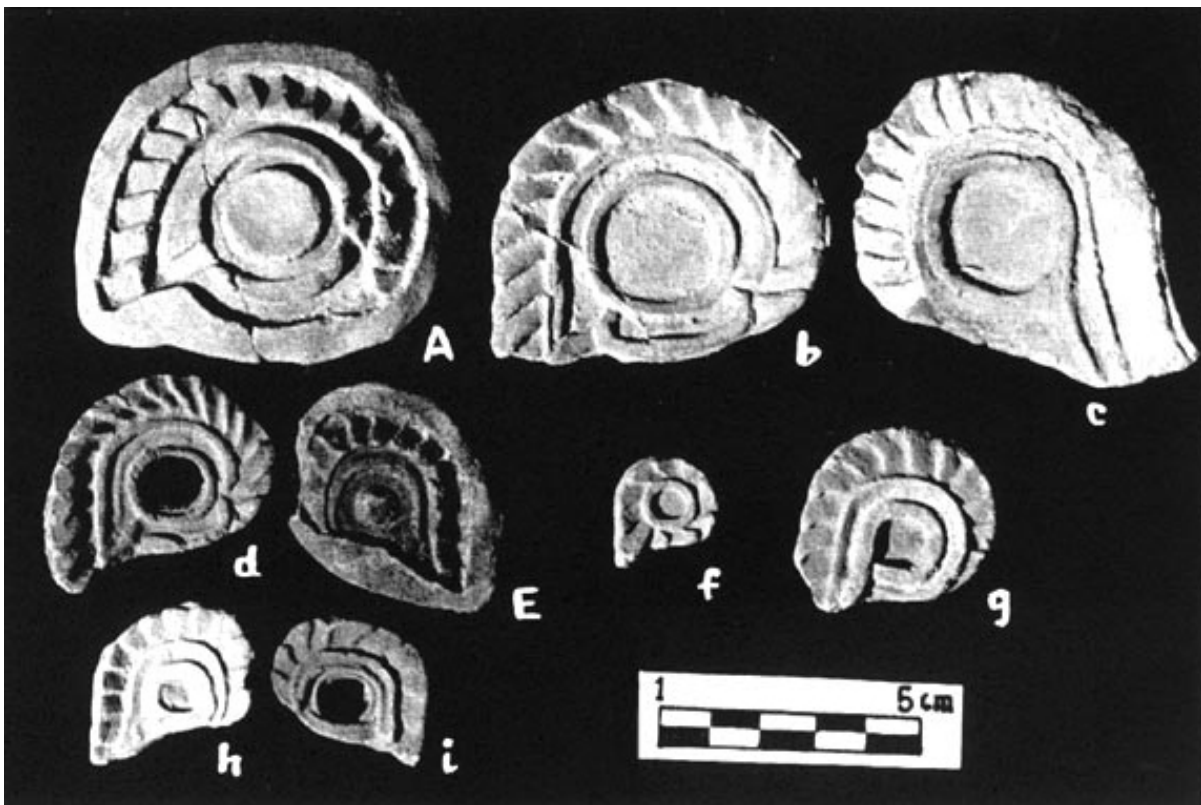


Photo 20. A, b, c, d, E, f, g, h, i. Feathered eyes.



Photo 21. a, b. Birds, front, with extended wings.



Photo 22. A, b. Bird body. See [Photo 144](#). a, b, d. c, d. Duck head seen in profile and from above; see the cornea point of beak. e. Duck head seen from above.

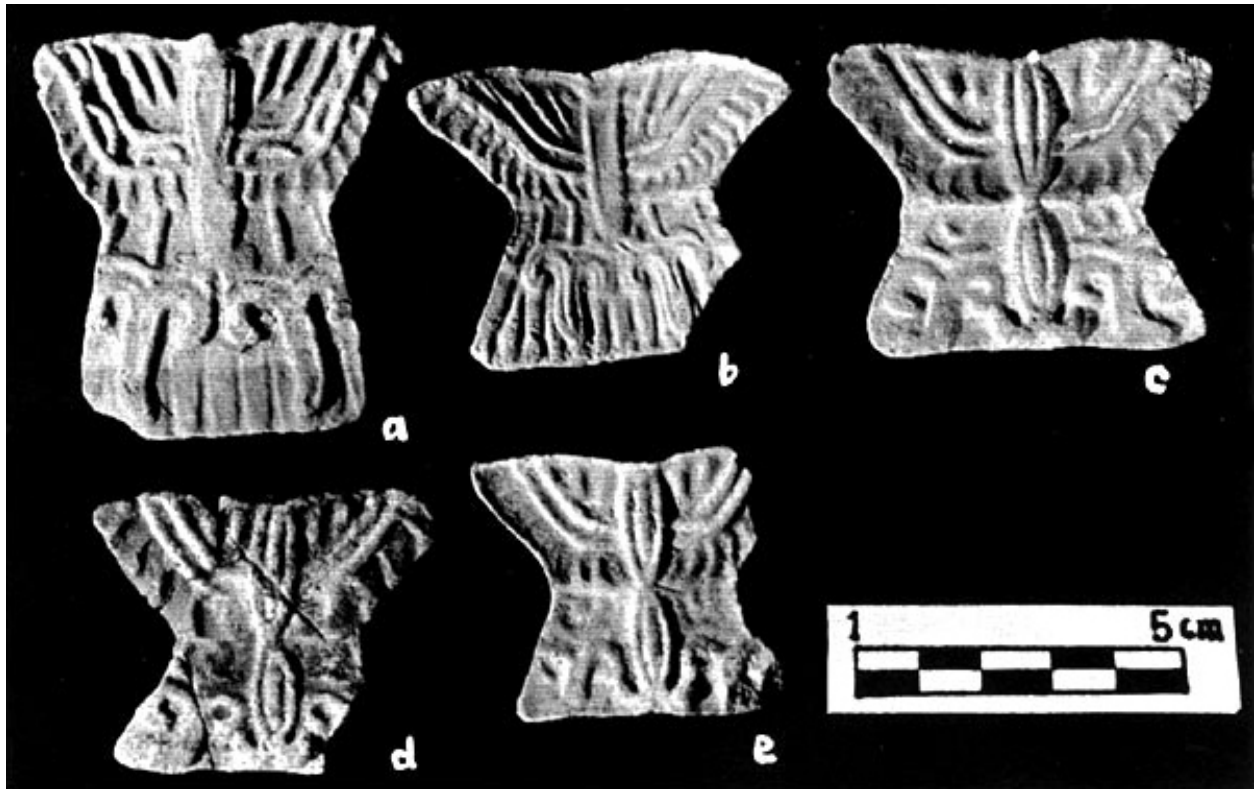


Photo 23. a, b, c, d, e. Butterflies, variants.



Photo 24. a, b, c, d, e, f, g. Butterflies, variants.



Photo 25. A, b, c. Butterflies, variants. (censer lateral plaque fragments).



Photo 26. a, B, c, d, E, f. Butterflies, in profile.

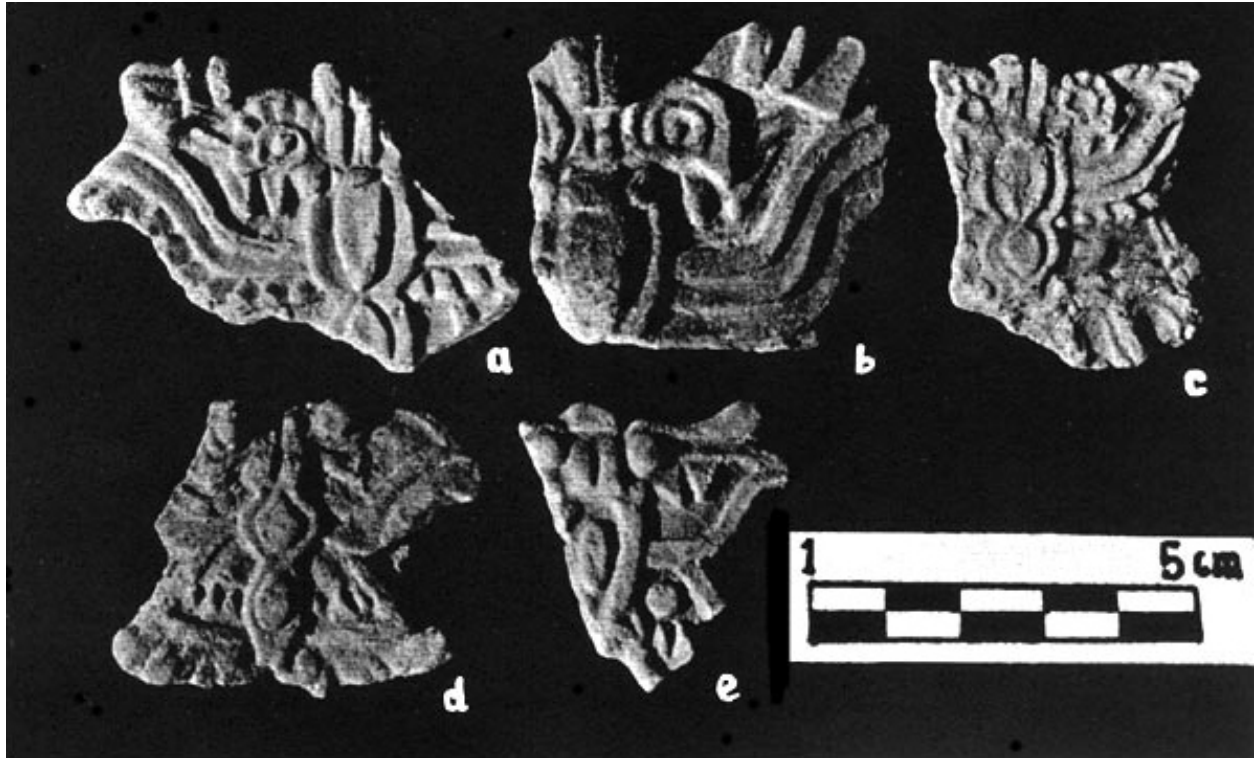


Photo 27. a, b, c, d, e. Butterflies, variants.

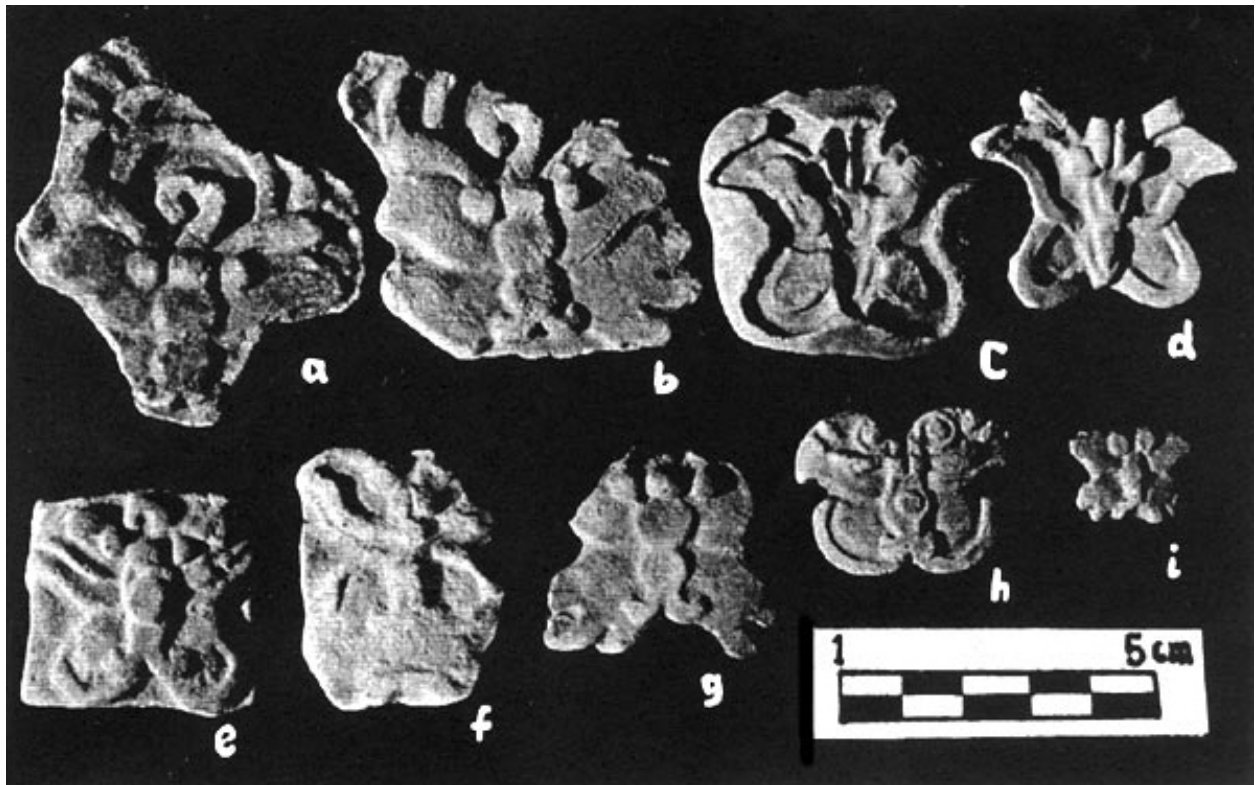


Photo 28. a, b, c, d, e, f, g, h, i. Butterflies, variants.



Photo 29. A, B. Butterfly.



Photo 30. A, B. Butterfly fragment.



Photo 31. a, B, c, d, e. Butterfly antennae.

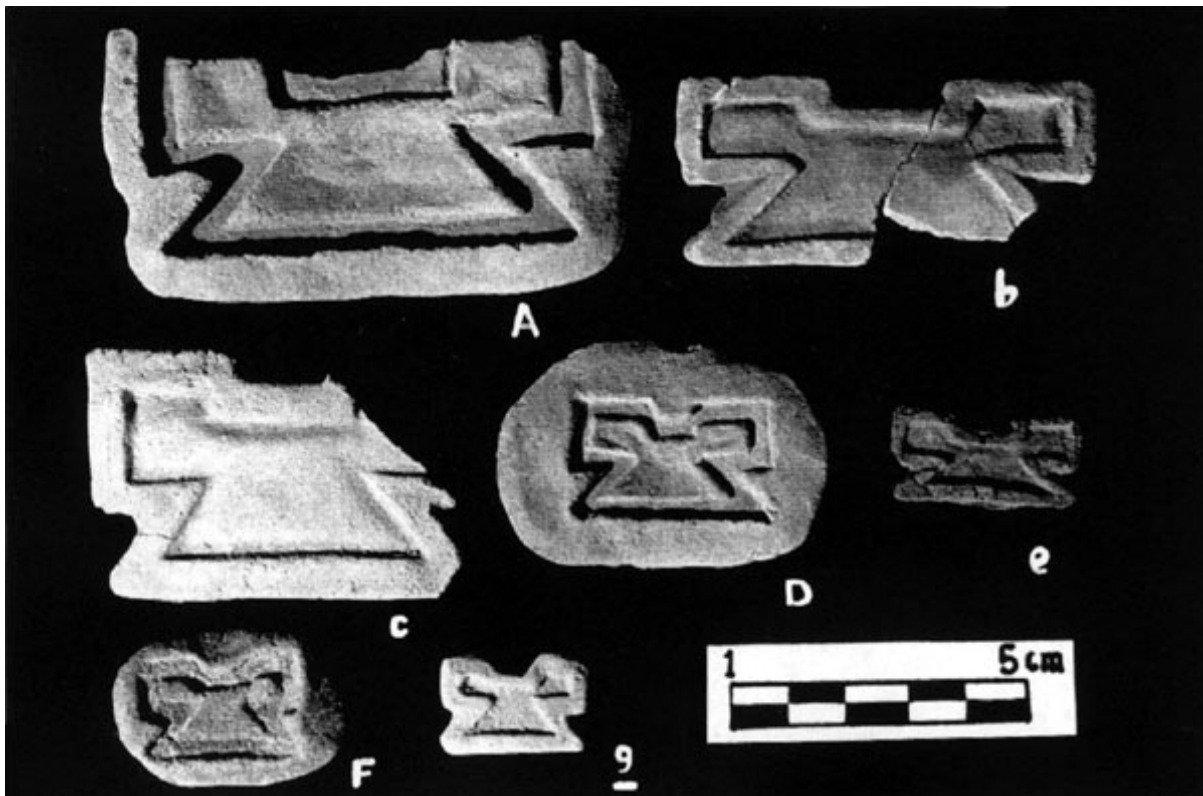


Photo 32. A, b, c, D, e, F, g. Stylized butterflies. See [Photo 75](#).



Photo 33. A, b, c, d, f, G, h, i, J, k, l, m, n. Butterfly wings. E. Bird wing. See [Photo 22](#). b .



Photo 34. A, b, c, D, e, f, G, h, i. Tlacuaches?.



Photo 35. a. Feline upper jaw. b. Feline fauces. c. Fragment of feline upper jaw. See [Photo 180](#).

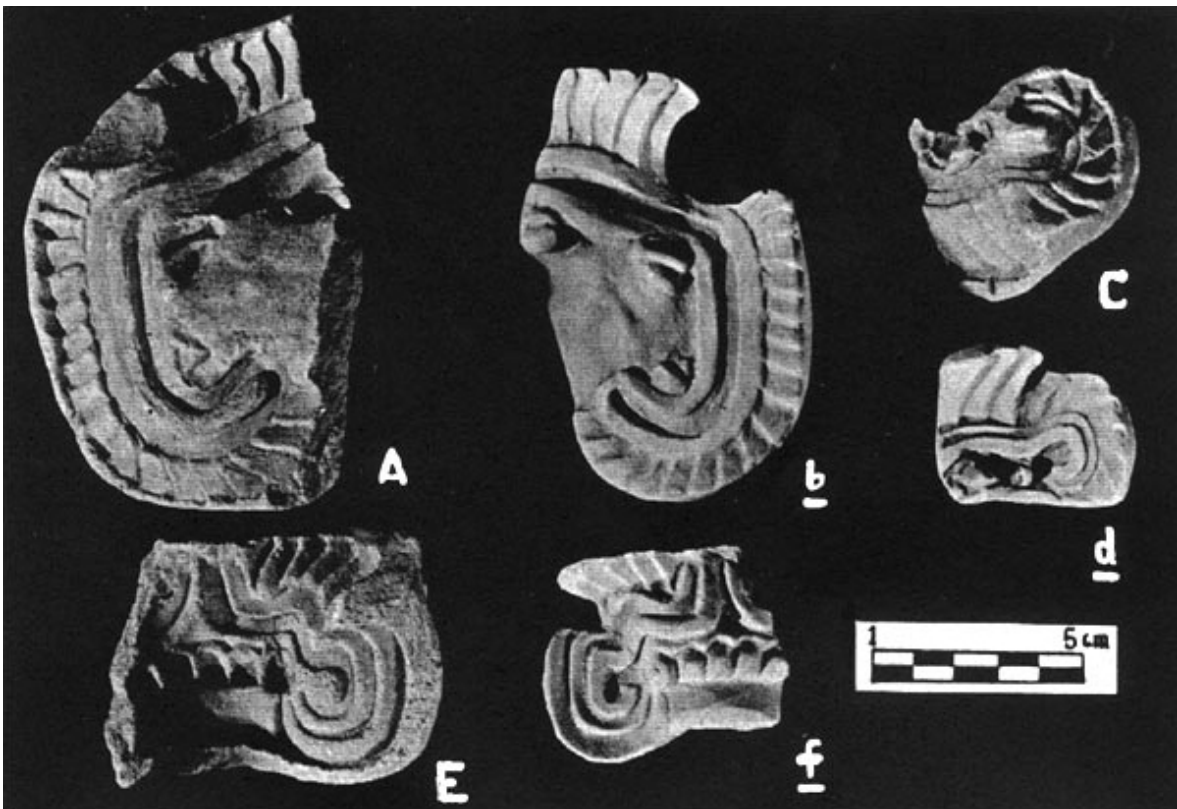


Photo 36. A, b, C, d, E, f. Feline faces with feather ornament.



Photo 37. a, b, c. Feline faces, seen from the palate.



Photo 38. A, b, c. Animal claws.



Photo 39. a, b, c. Animal faces, in profile.



Photo 40. A, b, c, d. Animal heads.



Photo 41. a. Rabbit. b. Turtle. c. Animal head. d, e. Monkeys.

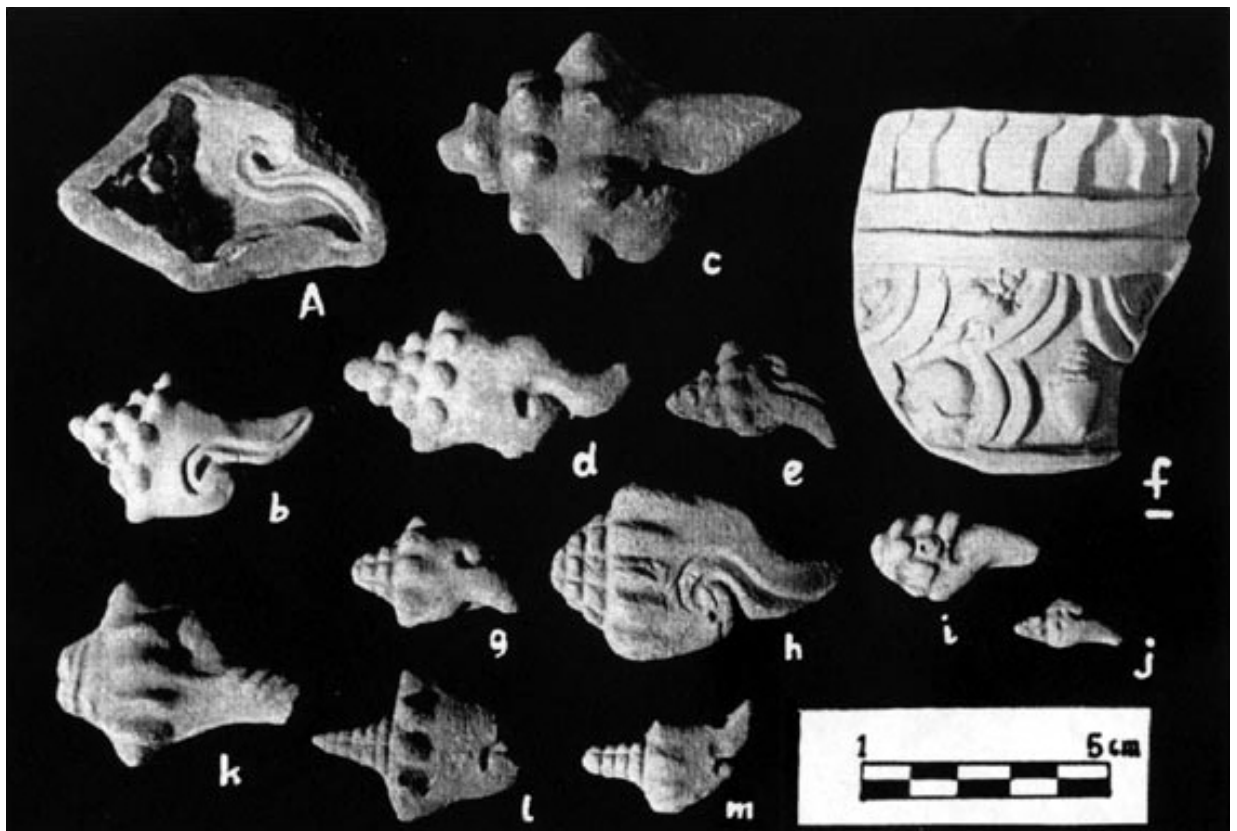


Photo 42. A, b, c, d, e, g, h, i, j, k, l, m. Snails, variants. f. Feathered ornament with shell motifs.



Photo 43. a, b, c, d, E, f, g, h, i, J, k, l, p. Snails, variants. m, n, o. Snails with feathers.

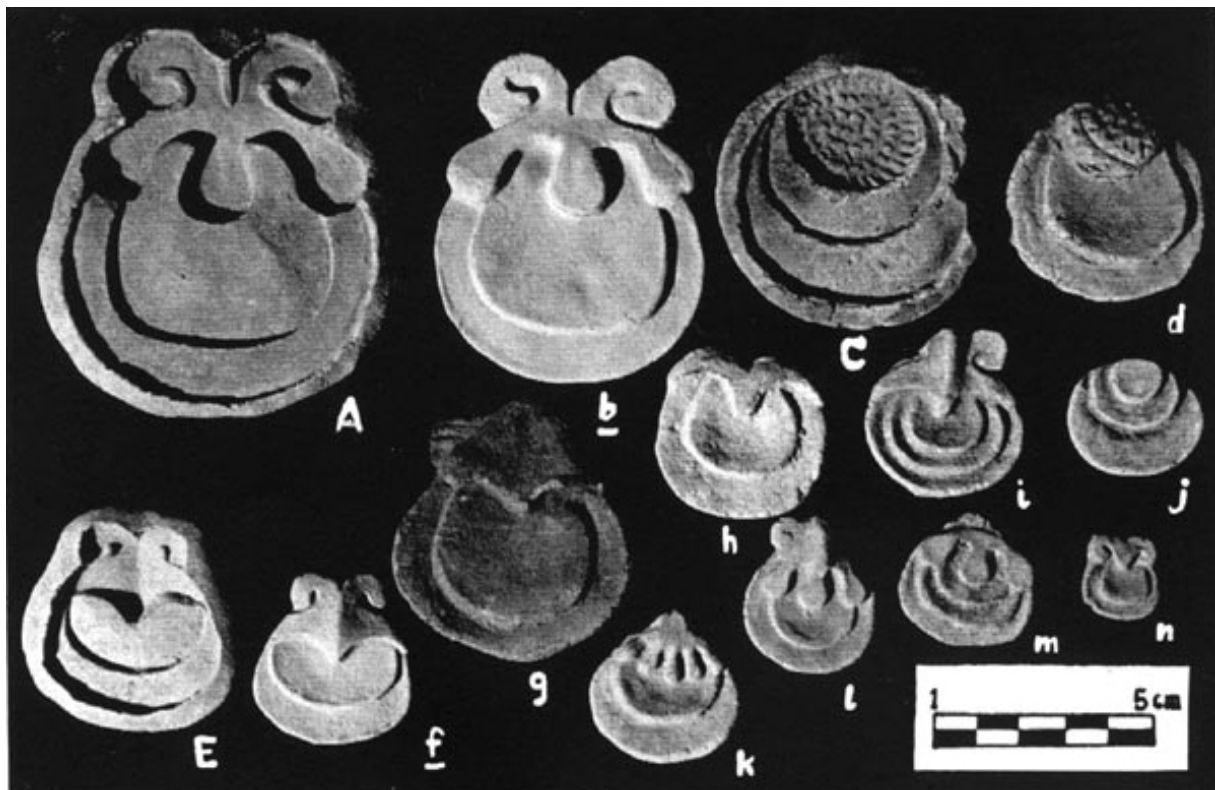


Photo 44. A, b, k, l, m. Shells adorned with drops. C, d, j. Shells with circular ornaments. E, f, g, h, i, n. Shells with beak-shaped adornment.



Photo 45. A, b. Shell. C, d, f. Shells adorned with drops. e. Shell with beak-shaped adornment.

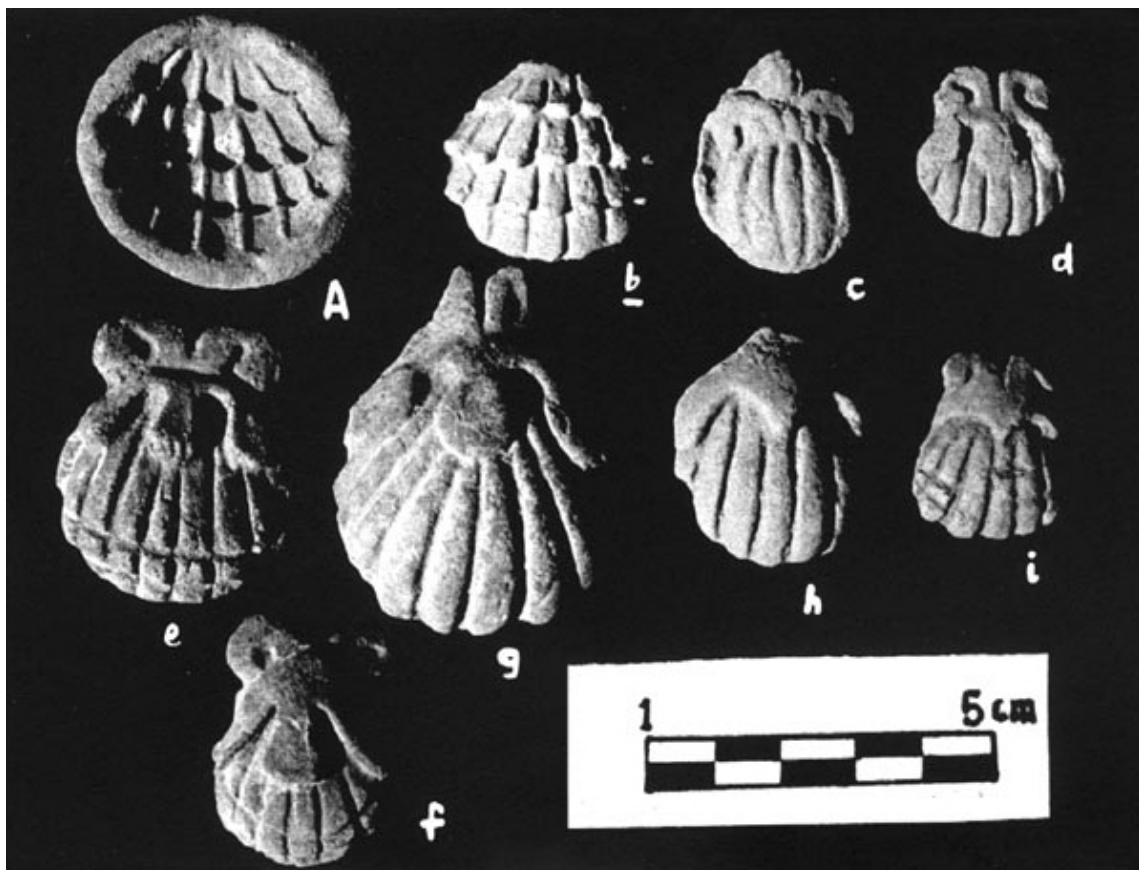


Photo 46. A, b. Shell. c. Fruit. See [Photo 9](#). a, d, e, f, g. Shells adorned with drops. h, i. Shells with beak-shaped adornment.



Photo 47. a, b, c, D, e, f, g, h, i. Shells.

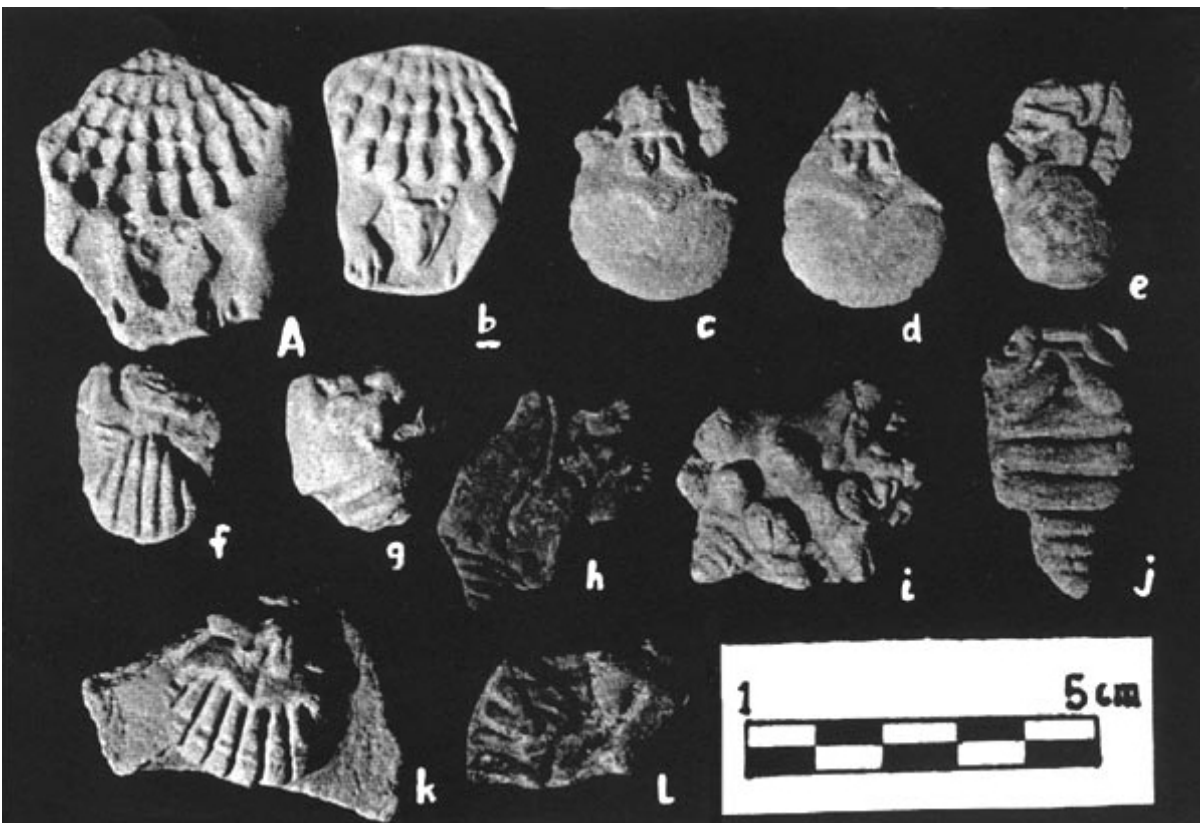


Photo 48. A, b, c, d, e, f, g, h, i, j, k, l. An animal emerging from a shell (rabbits?), variants.



Photo 49. A, B, c, D, e, f. Stars, variants. g. Motif with stars and feathers. See [Photo 150](#). e, f. and [Photo 60](#). b.