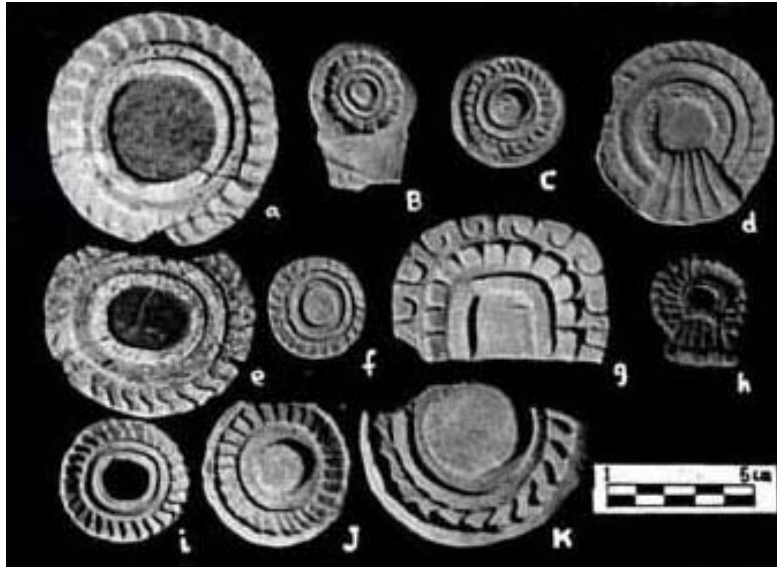


FAMSI © 2002: Saburo Sugiyama

## Censer Symbolism and the State Polity in Teotihuacán



**Research Year:** 1998

**Culture:** Teotihuacán

**Chronology:** Late Pre-Classic to Late Classic

**Location:** Highland México

**Site:** Teotihuacán

### Table of Contents

Introduction

Recording and Cataloging

Ritual Ceramics at a Workshop in the Ciudadela, Teotihuacán: Catalog

Presentation

Introduction

General Comments on Cataloging

Quantification Tables

[Note on the Conventions Used for Captions](#)

Catalog:

I. Phytomorphic: Realistic and Schematized Representations

II. Zoomorphic: Realistic and Schematized Representations

[III. Anthropomorphic: Attributes of Deities and Characters](#)

IV. Other Motifs: Different Representations and Symbols

V. Other Pieces: Censer Fragments and Molds

Bibliography

Data Base for Theater-type Censers Found in Teotihuacán and Abroad #1  
"Adornos" and molds for censers from the "North Palace" in the Ciudadela,  
Teotihuacán Archaeological Project 1980-82, INAH  
"Adornos" and molds for censers from Compound "Group 5" of the Sector  
N5W1,  
Scholarship Program, INAH  
"Adornos" and molds for censers from surface collection in Teotihuacán,  
Teotihuacán Mapping Project  
"Adornos" and molds for censers from the Project of the Feathered Serpent  
Pyramid in 1988-89,  
Arizona State University and INAH  
Preliminary Comments  
Sources Cited

### ***Note on the Conventions Used for Captions***

Considering this is a collection whose origin was a workshop fully dedicated to mold production, most pieces presented are molds and reproductions.

In those cases where only the mold could be recovered, and to obtain examples of the pieces involved, reproductions were made with the clay that modern potters from the village of San Sebastián Xolalpan nowadays use.

An alphabetical order was adopted for the reading of captions, making reference to what we have enunciated in the previous lines:

Therefore:

- A. Capital letters indicate: **Prehispanic Mold.**
- b. Small letters indicate: **Prehispanic Molded Reproduction.**
- c. Underlined small letters indicate: **Modern Reproduction Accomplished with a Prehispanic Mold.**

In the case of **Molded** pieces, they will be indicated throughout the text; to the effects of making comparisons of pieces between two photos, we have indicated: See Photo No....

**Example:**

- Photo No. 1.
  - B. **Mold.**
  - a, c, d, e, h, i. **Prehispanic Molded Reproduction.**
  - f, g. **Modern Reproduction Made with a Prehispanic Mold.**

III. Anthropomorphic: Attributes of Deities and Characters.



Photo 50. a, B. Mask. Character with Tlaloc attributes.



Photo 51. a, b, c, d, e, f. Characters with Tlaloc attributes.

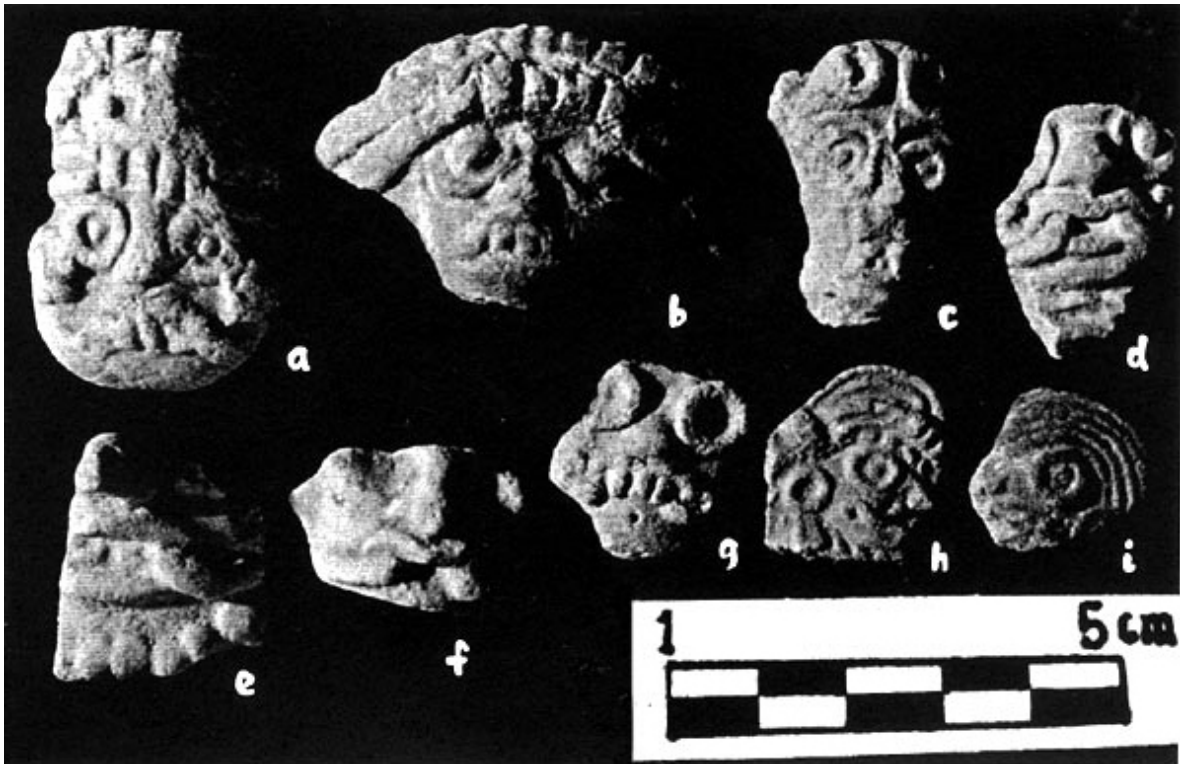


Photo 52. a, b. Characters with Tlaloc attributes and frontal tying. c. Character with circles on forehead and eyes. d, e, f. Tlaloc-type fragments of nose and mouth. h, i. Characters in profile. See [Photo 70](#). b.



Photo 53. a, b, c, d, e. Tlaloc motif with water lily, variants.





Photo 54. A, b. Figure in the shape of a drop with Tlaloc effigy, feather headdress and triple-mountain adornment in lower portion. See [Photo 180](#). c, d, e, f, g. Variants (fragments) of the preceding figure.



Photo 55. a, b, c, d. Figures in the shape of a drop with Tlaloc effigy and some sort of chest protector with a triple-mountain motif. e, f. Variants of the preceding. See [Photo 180](#). A, b, F, g.



Photo 56. a, b, c, d. Variants of the preceding photo.



Photo 57. A, b, c, d, g, h, i. Tlaloc motifs with headdress variants. c. Tlaloc motif carrying in his hand a serpentine feature with volutes. See [Photo 60](#). A, b. and [Photo 70](#). b. E, f. Tlaloc motif; lower jaw with fang, arm and pectoral with three drops. Fragment. J, k. Tlaloc motif with water lily. Fragment.



Photo 58. a, b. Tlaloc "mustache cover" in disc, variants. c, d. Tlaloc "mustache cover" in appliqués for figurines, variants.





Photo 59. a. Plaque showing three fangs and bifid tongue.



Photo 60. A, b. Tlaloc ray. C, d. Tlaloc with Tlaloc ray.



Photo 61. a. Head resembling Xipe Totec, with headdress of intertwined trapezoids. b. Body of character apparently covered with a human skin. c. Xipe Totec head.



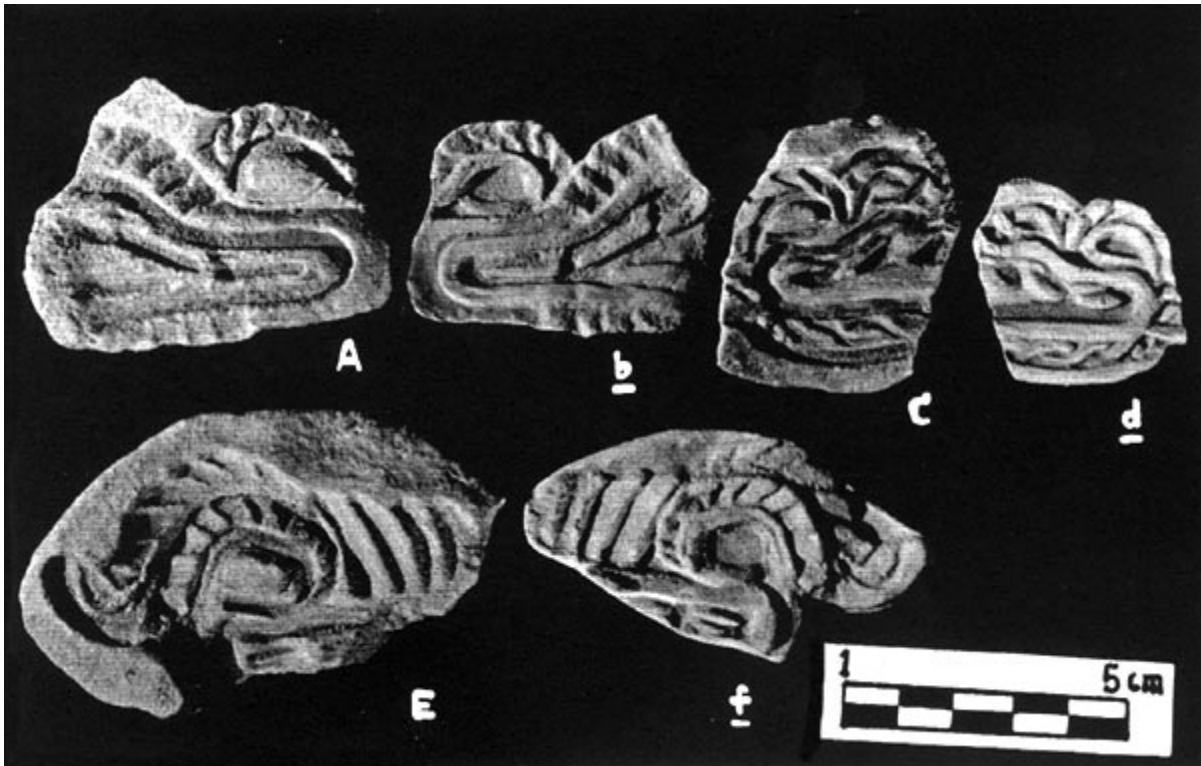


Photo 62. A, b, E, f. Feathered serpents. See [Photo 63](#). A, b, c. C, d. Same motif with intertwined lines.

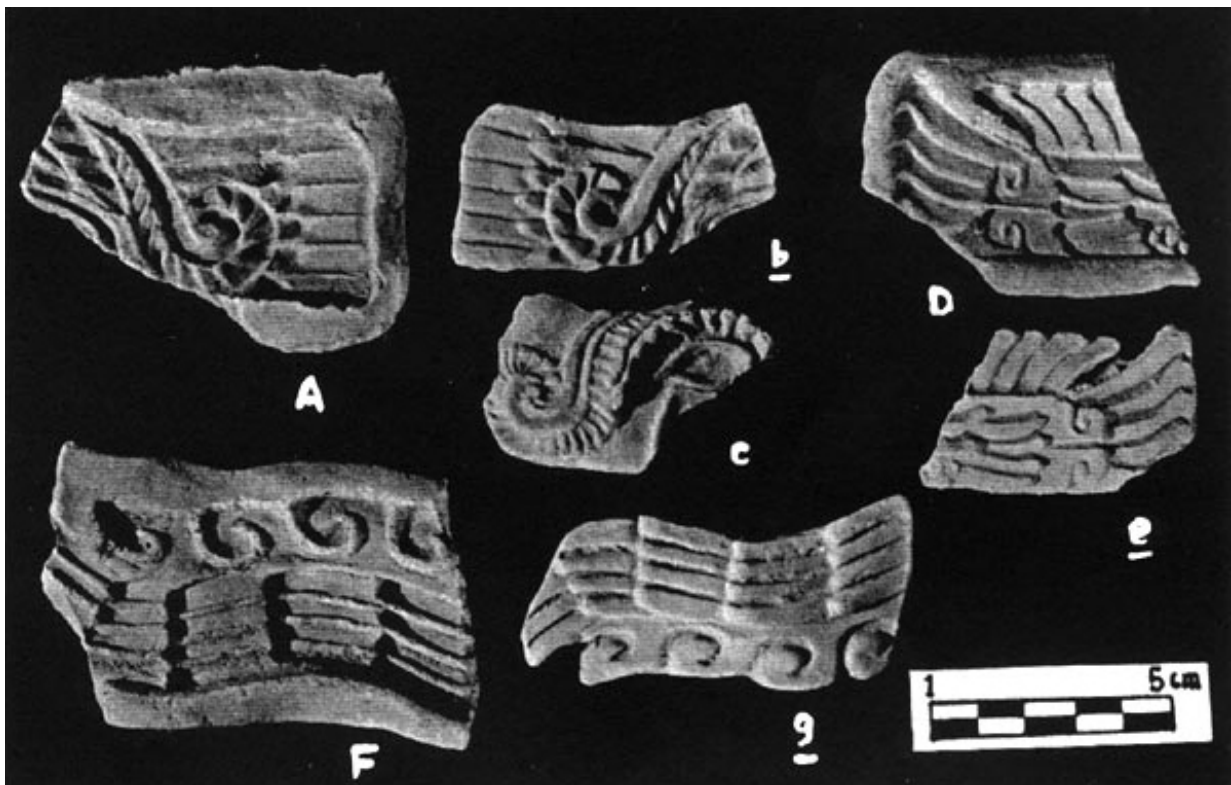


Photo 63. A, b, c. Head fragments with volute eyebrow. D, e. Tail fragment with rattle and feathers. See [Photo 64](#). E, f. F, g. Feathered serpent with volutes. See [Photo 60](#). A, b.



Photo 64. A, b, c, d, g, h. Serpent rattles. E, f. Snake rattle with feathers. See [Photo 63](#). D, e.



Photo 65. a, b. Warrior with feathered serpent headdress.



Photo 66. A, b. Character with feathered serpent headdress.





Photo 67. a, b. Fragments of character with feathered serpent headdress. See [Photo 65](#).



Photo 68. a, b. Seated character with bending legs; the head is missing, but the arm with a bracelet may be seen; he holds an object similar to the molds with handles found at the workshop in the Ciudadela. See [Photo 214](#). A., variants.





Photo 69. A, b, c, d, E, f. Characters, lower part of body.



Photo 70. a, b, c, d, e. Characters, fragments. b. Compare serpentine feature with [Photo 57](#). c. and the head with [Photo 52](#). h, i.



Photo 71. A, b, C, d, e, F, g, h, i, j. Characters with bead necklace. A, b, C, d, F, g, i, j. Characters with sphere nose plugs.



Photo 72. A, b, C, d. Characters with necklace. E, f. Character with a bifid tongue pectoral. g. Character with earflares.

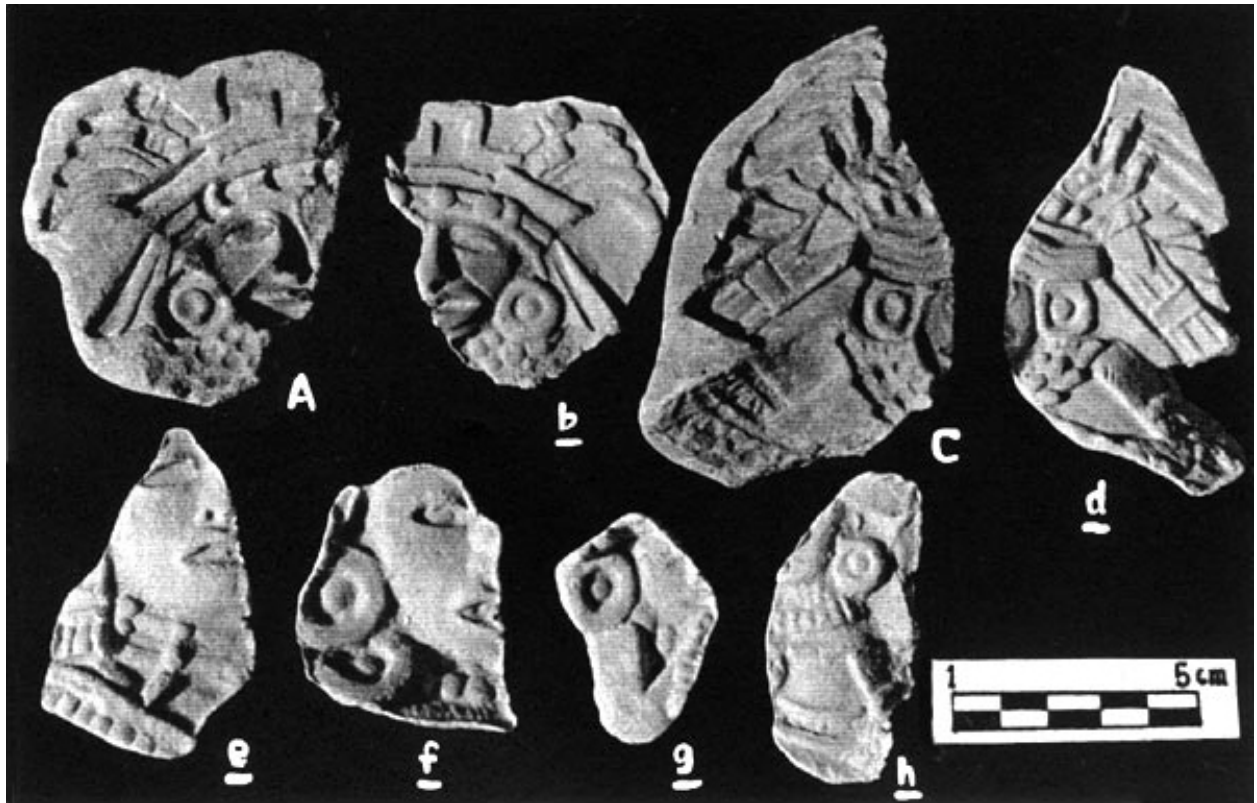


Photo 73. A, b, C, d, e, f, g, h. Characters, fragments.



Photo 74. a, B. Character with headdress, eye masks, and chin ornament.



Photo 75. A, b. Character with headdress and butterfly nose pendant.



Photo 76. A, b. Deformed character.





Photo 77. a, b, c. Obese characters.



Photo 78. A, b, C, d, E, f, g, h. Chubby-cheeked characters.

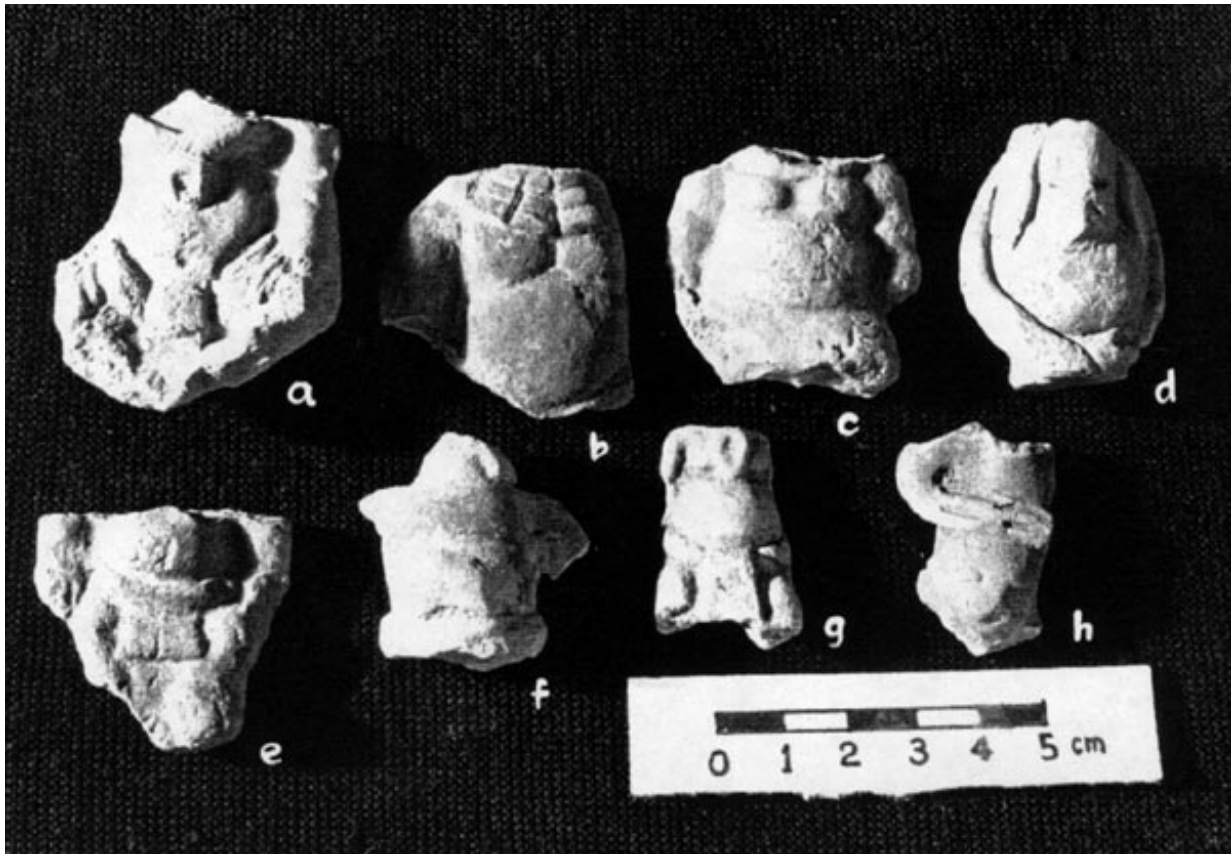


Photo 79. a, b, c, d, e, f, g, h. Fragments of molded bodies.



Photo 80. a, b, c, d, e, f, g, h, i, j, k, l, m, n, o, p. Flat little heads.



Photo 81. a, b, c, d, e, f, j, k. Anthropomorphic, flat heads. g, h, i. Heads, possibly monkey.



Photo 82. a, b. Characters with attire.



Photo 83. A, b, c, D, e, f. Female representations.

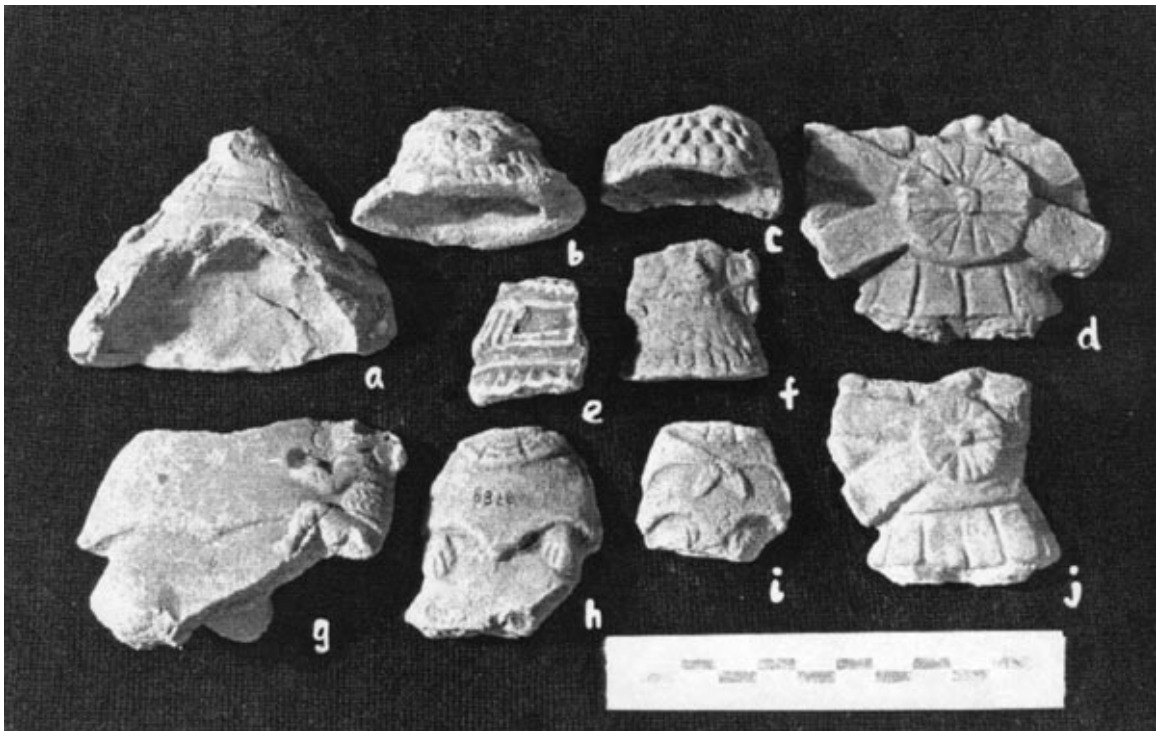


Photo 84. a, b, c, e, f. Figurine bodies. d, j. Bodies with rosette adornment. g. Female with quechquémitl holding a baby. h. Female with quechquémitl. i. Female carrying something on her back.





Photo 85. a. Character with arms tied to his body. b. Similar to preceding one. c. Flat figurine.



Photo 86. a, b, c, d, e, f, g. Bodies with molded figurines. h. Body of articulated figurine.





Photo 87. a. Figurine. b. Molded figurine.

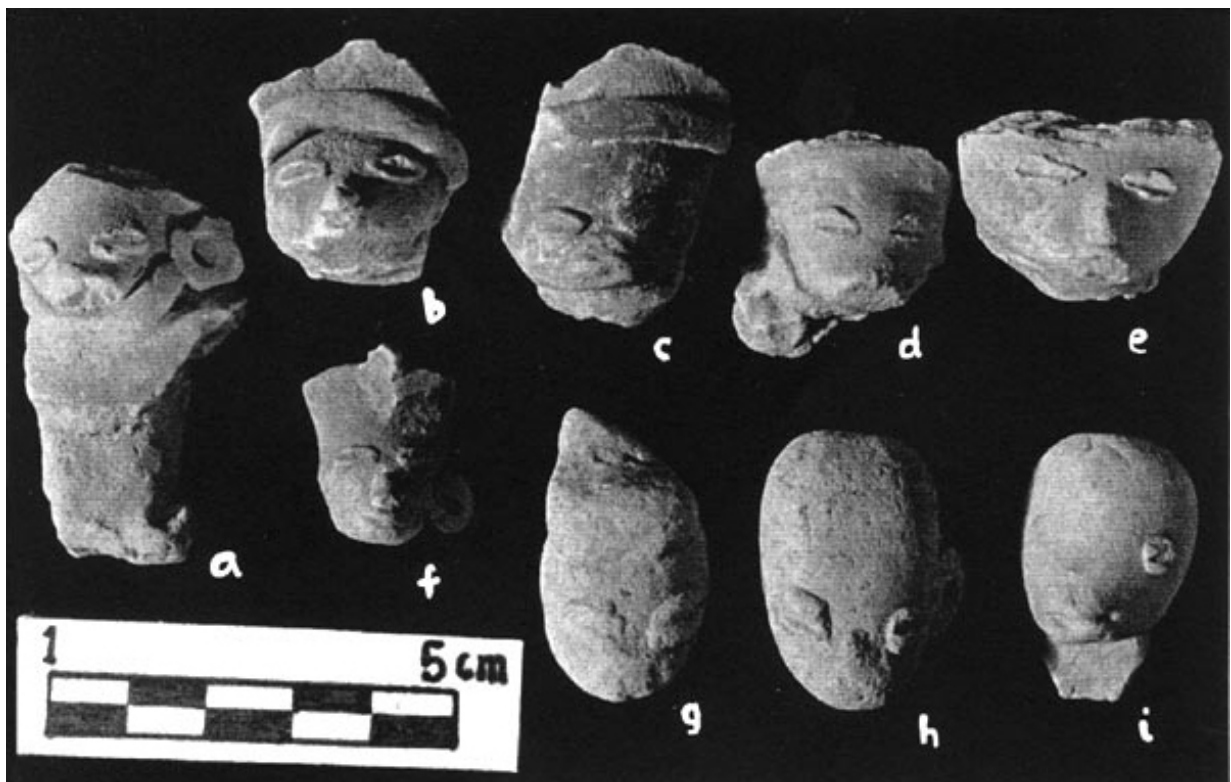


Photo 88. a, b, c, d, e, f, g, h, i. Molded figurines, prognathous, with coffee-grain-type eyes.



Photo 89. a, b, c, d. Molded figurines, prognathous.

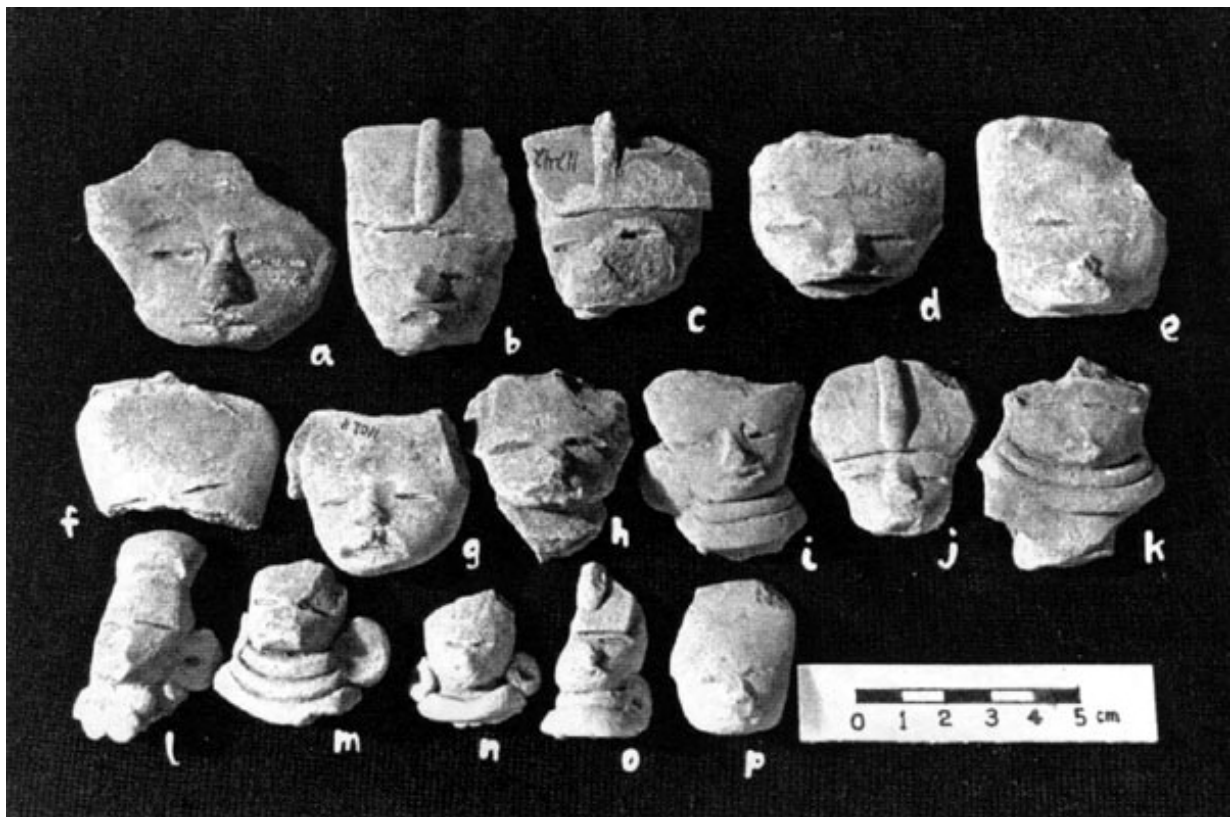


Photo 90. a, b, c, d, e, f, g, h, i, j, k, l, m, n, o, p. Molded figurines with incised eyes.



Photo 91. a. Figurine head with absence of traits. b. Figurine head, with protruding forehead. Molded.

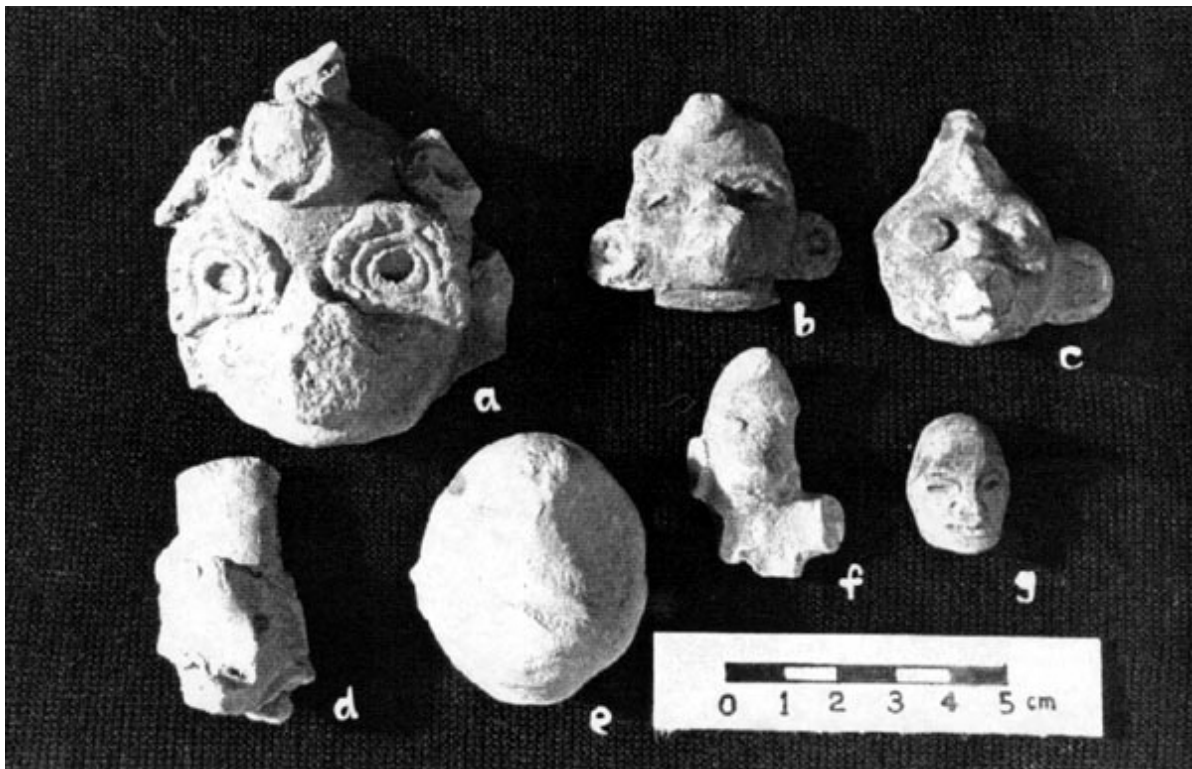


Photo 92. a, b, c, d, e, f, g. Molded figurines with protruding forehead. a. An identical piece with Tlaloc attributes is shown in *Memoria del P.A.T.* 80-82. INAH. V.1, p. 246, Photo 9.



Photo 93. a, b, c, d, e, f, g, h, i, j, k, l, m, n, o, p, q, r, s, t, u. Portrait-type figurine heads.

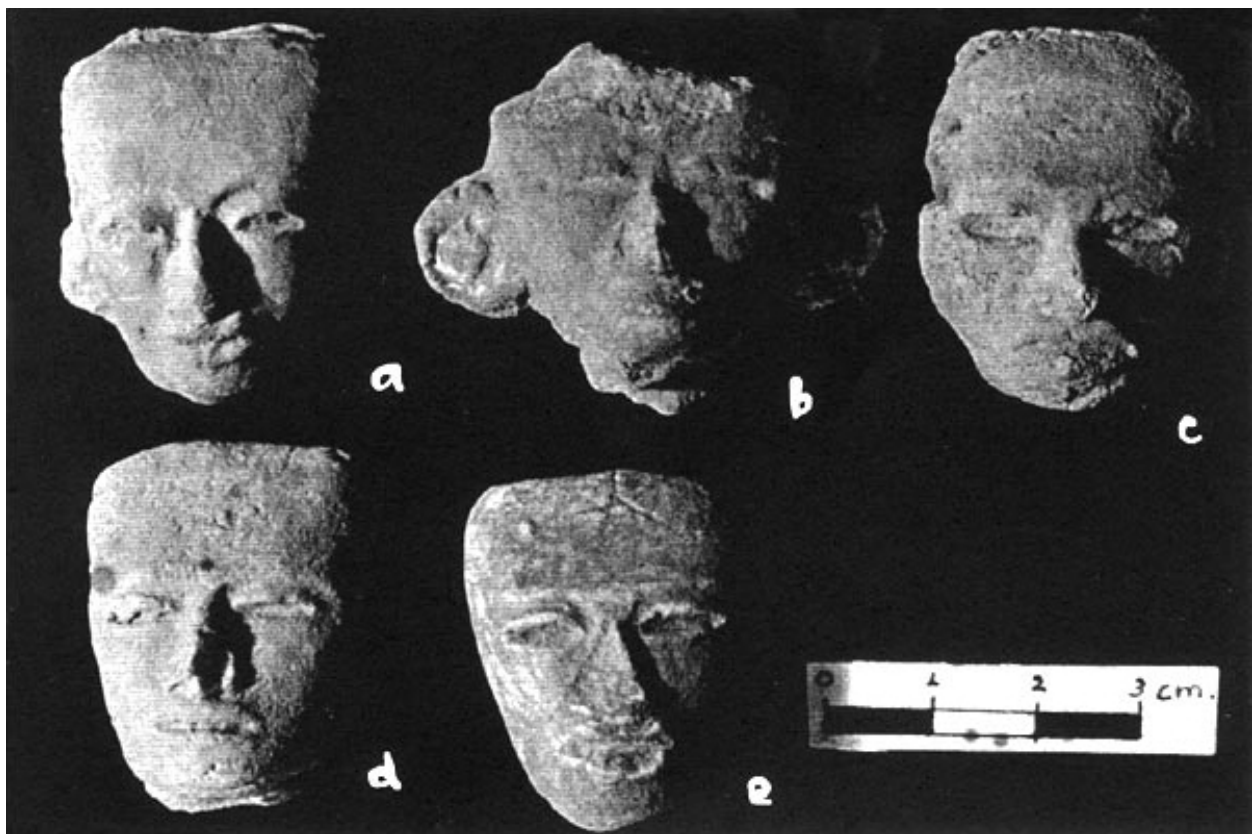


Photo 94. a, b, c, d, e. Portrait-type figurines.



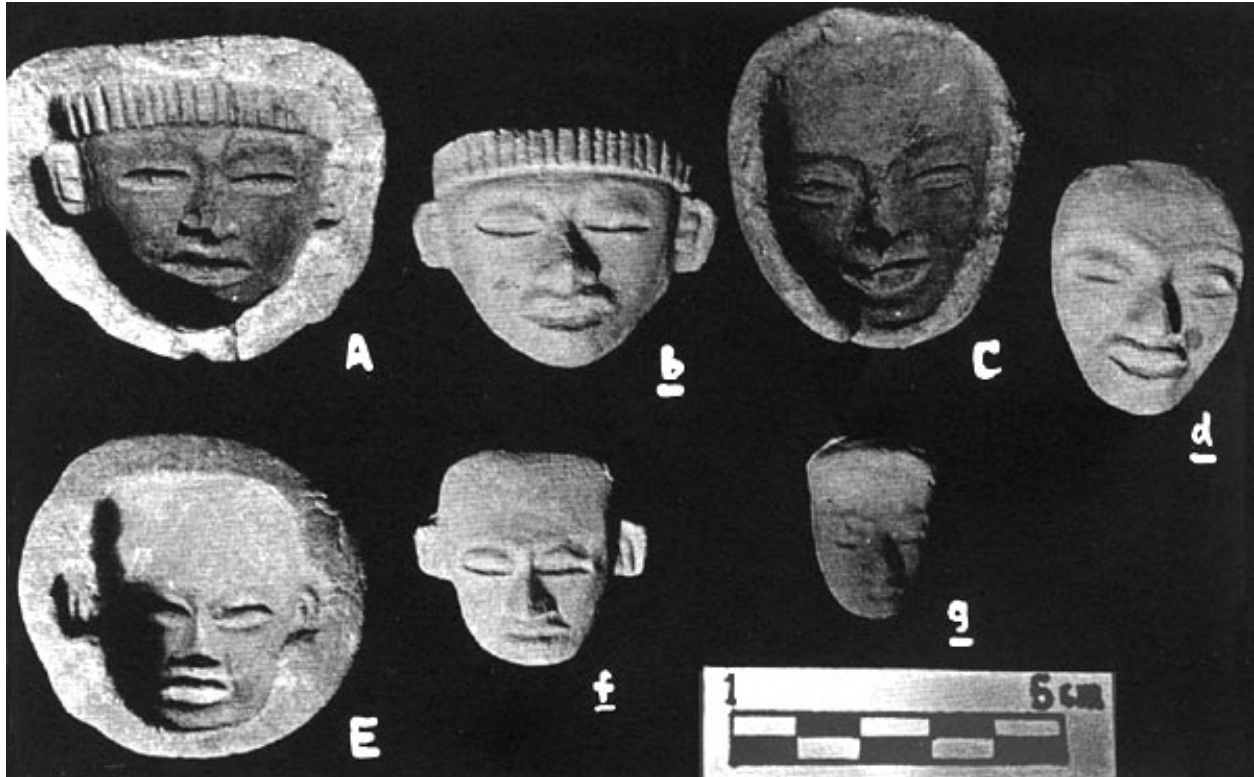


Photo 95. A, B. Portrait-type figurine, similar to the mask form. C, D, E, F, G. Portrait-type figurines.



Photo 96. A, B, c. Portrait-type figurines.



Photo 97. a, b. Small masks.



Photo 98. a, b. Character with hanging lower lip.



Photo 99. a, d, e. Head fragments. b, c. Heads.



Photo 100. a, b. Heads.



Photo 101. a. Head with headdress, with discs over the eyes and sphere nose pendant. b. Head with molded headdress.



Photo 102. a, b, c. Heads with conical fringed headdress. d, e, f. Heads with a three-tufted haircut.





Photo 103. a, b, c, d, e, f, g, h, i. Varied headdresses.



Photo 104. a, b, c, d, e, f, g, h, i, j, k, l. Varied headdresses.

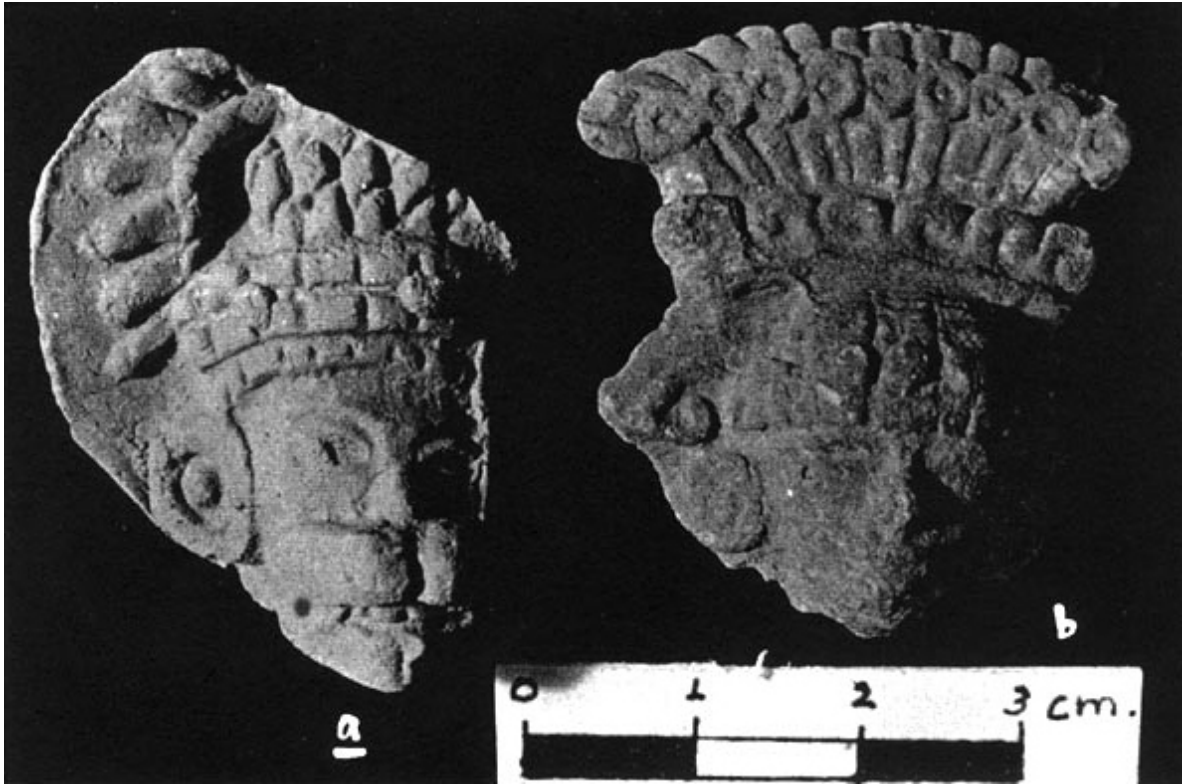


Photo 105. a. Character with feline buccal mask. b. Character with headdress.



Photo 106. a. Character with headdress and empty eye sockets. b, e. Characters with removed flesh on noses and mouths. c. Character with removed flesh and three drops on cranium. d. Figurine head with perforations on the forehead.



Photo 107. a, b, c, d, e, f, g. Elder characters. a. Nose fragment. d, e, f. Showing spherical nose plugs.



Photo 108. a, b, c, d. Asymmetrical faces.



Photo 109. a. Figurine head, fragment. b, c. Bodies of articulated figurines.



Photo 110. a. Figurine head. b. Fragment of nose and mouth. c. Fragment of nose and eye with feather adornment. See [Photo 66](#). b.



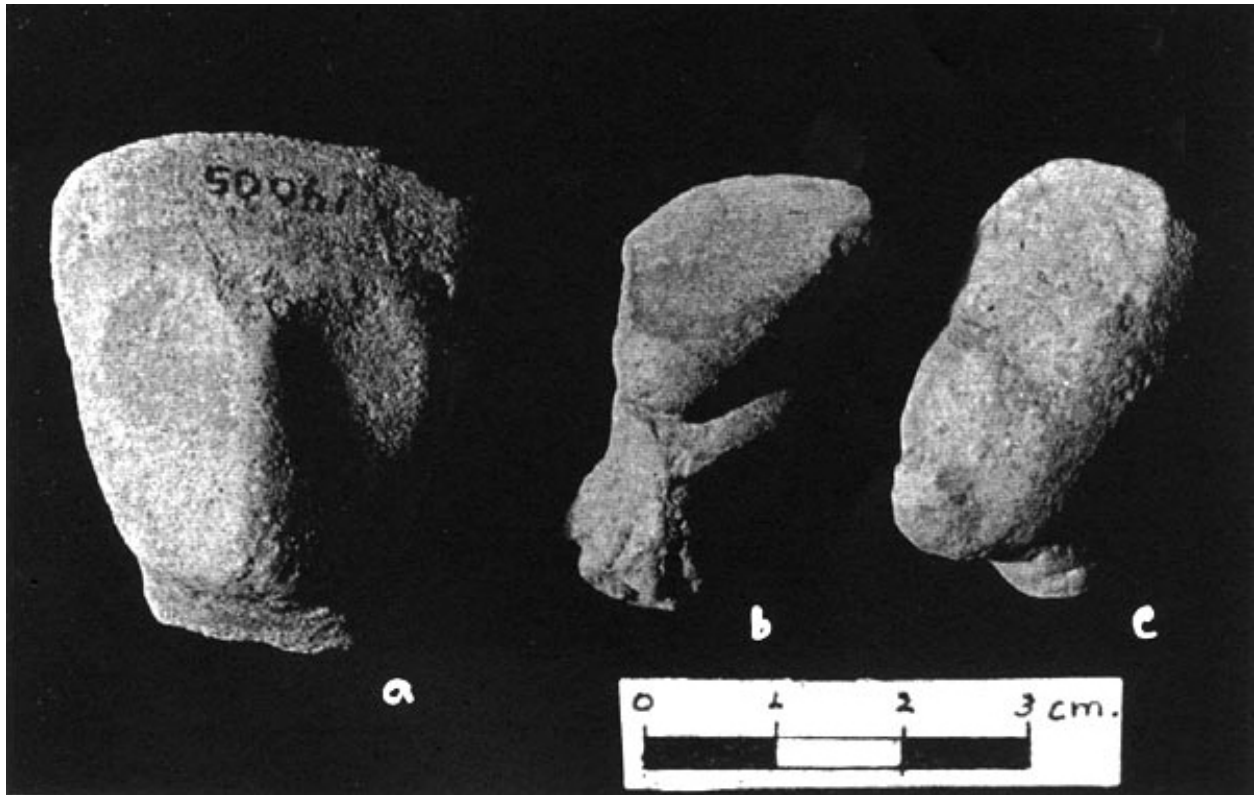


Photo 111. a, b, c. Figurine heads with absence of traits.



Photo 112. a, b, c. Appliqués on censer handles of a certain type.



Photo 113. a, b, c, d, e. Appliqués on tripod vases.

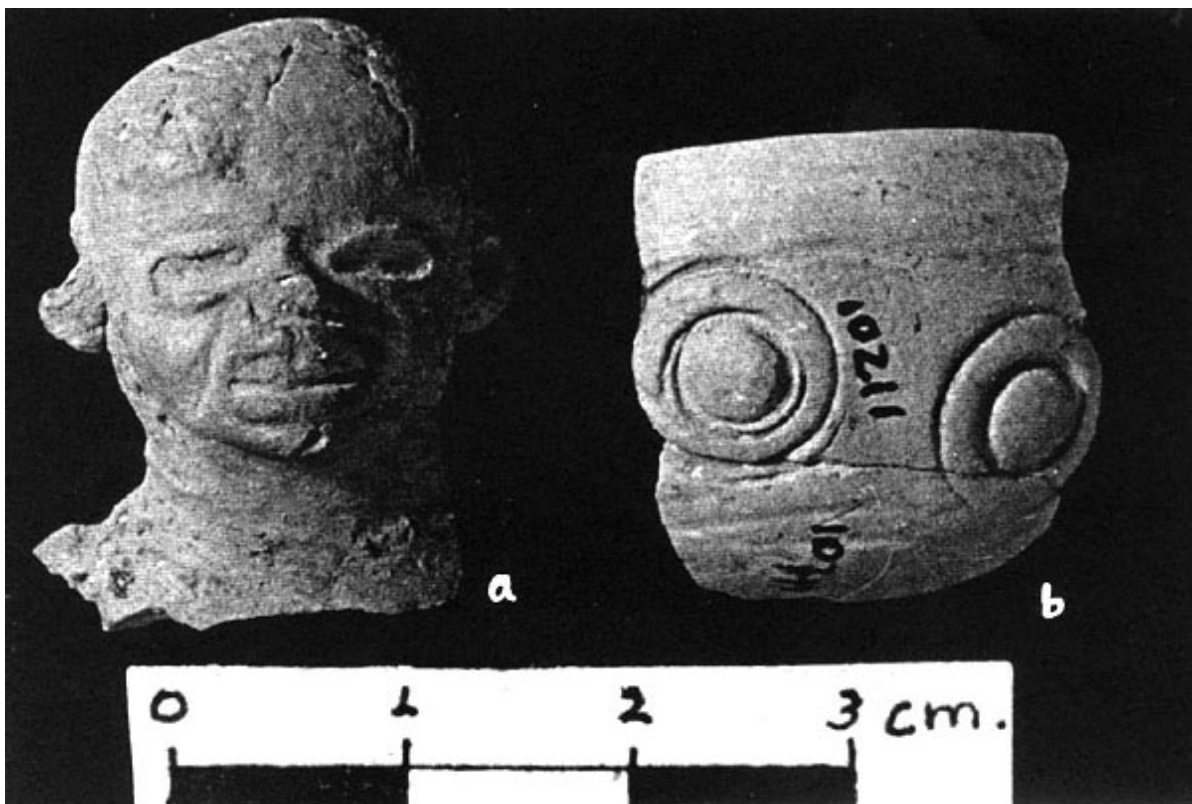


Photo 114. a. Fragment of molded figurine. b. Fragment of miniature vessel. Both pieces are thin orange ceramic, of the kind known as: "egg-shell."



Photo 115. a, b. Fragments of a Zapotecan-style mask; note the dental mutilation.



Photo 116. a. Partial view of character wearing a mask in the shape of a bird beak. The arm is extended and pointing forward with the index. Fragment.

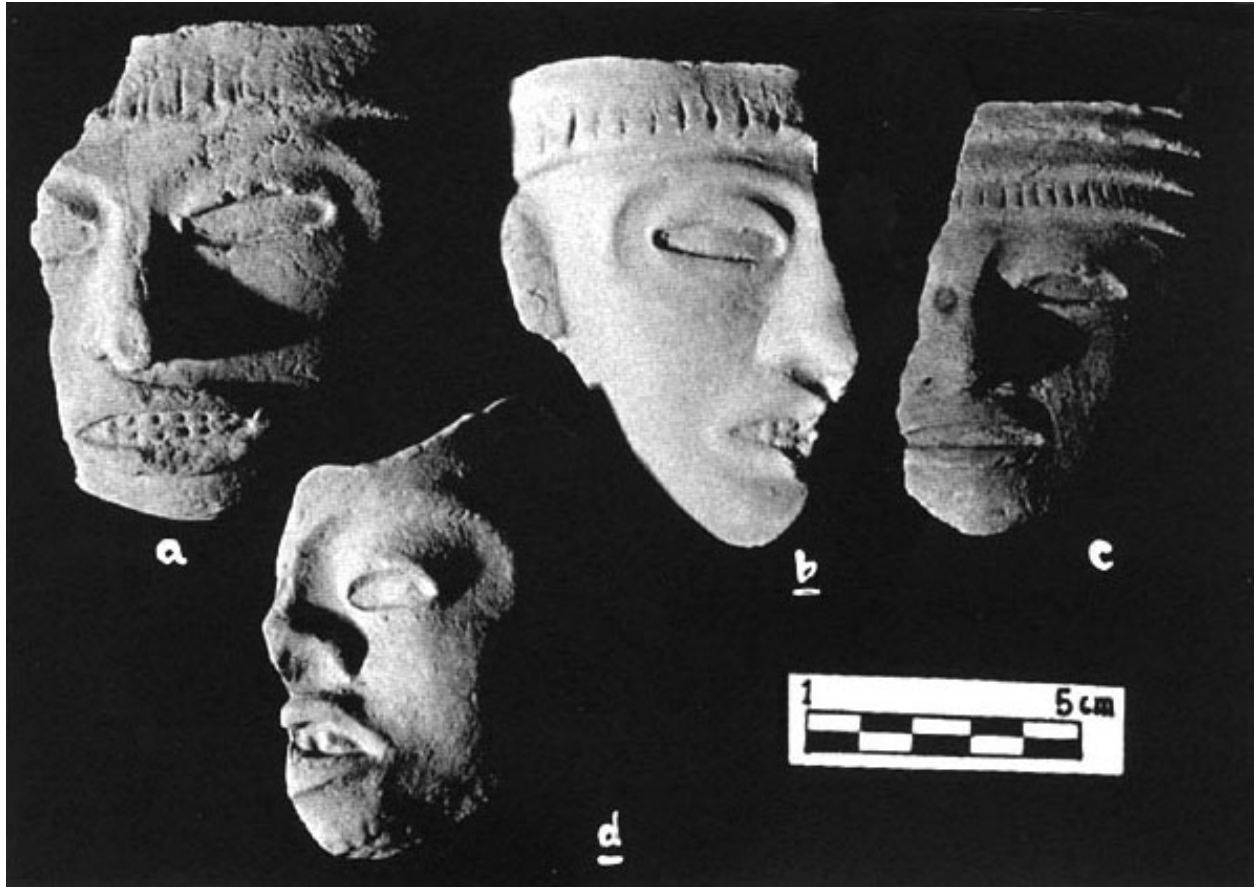


Photo 117. a, b, c, d. Fragments of small masks.



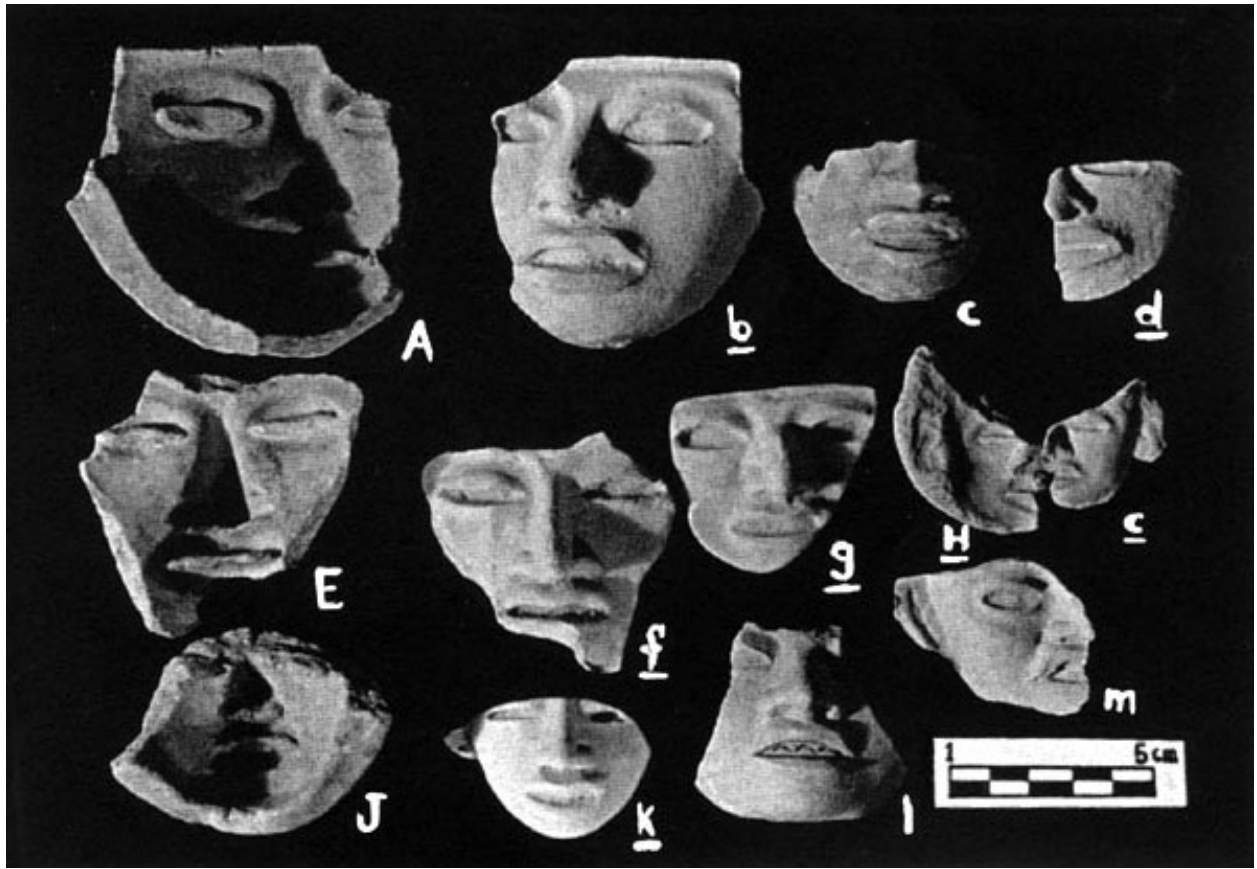


Photo 118. A, b, c, d, E, f, g, H, i, J, k, l, m. Fragments of small masks.



Photo 119. a, B. Mask.



Photo 120. A, b. Masks.



Photo 121. a, b. Masks.

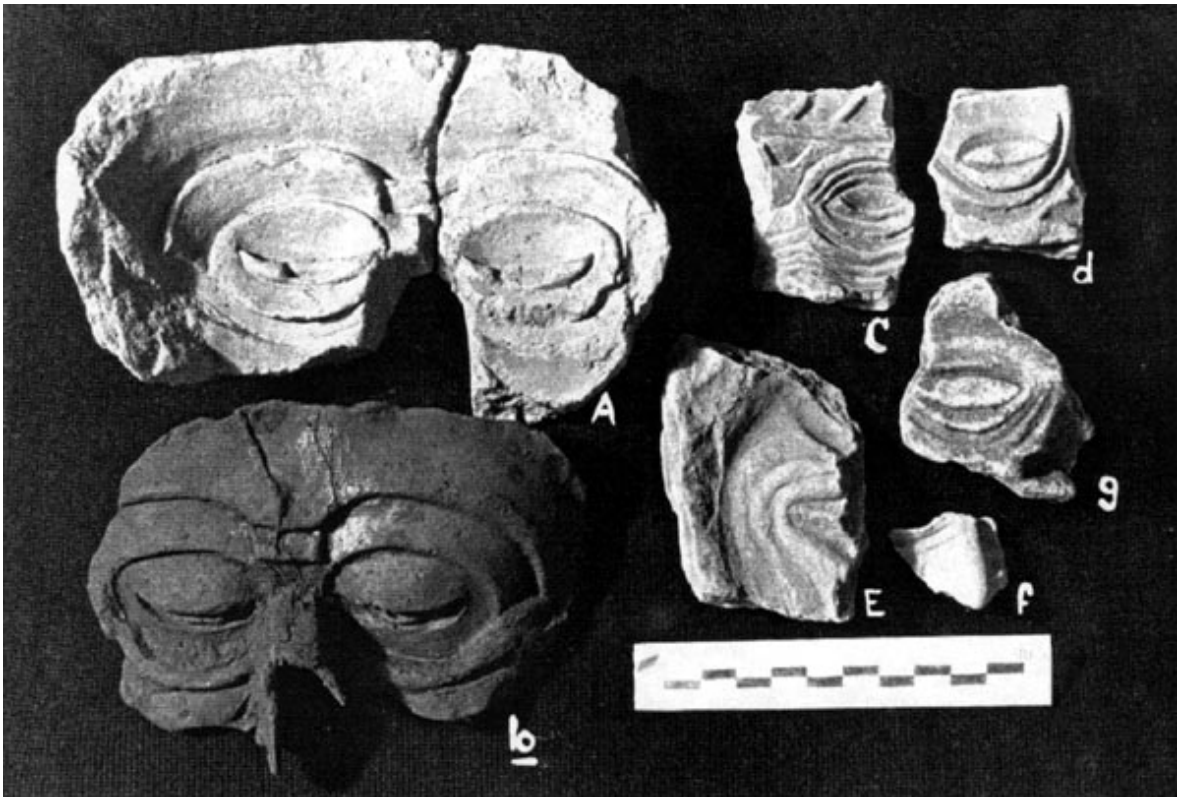


Photo 122. A, b, C, d, E, f, g. Mask fragments representing an elder character.

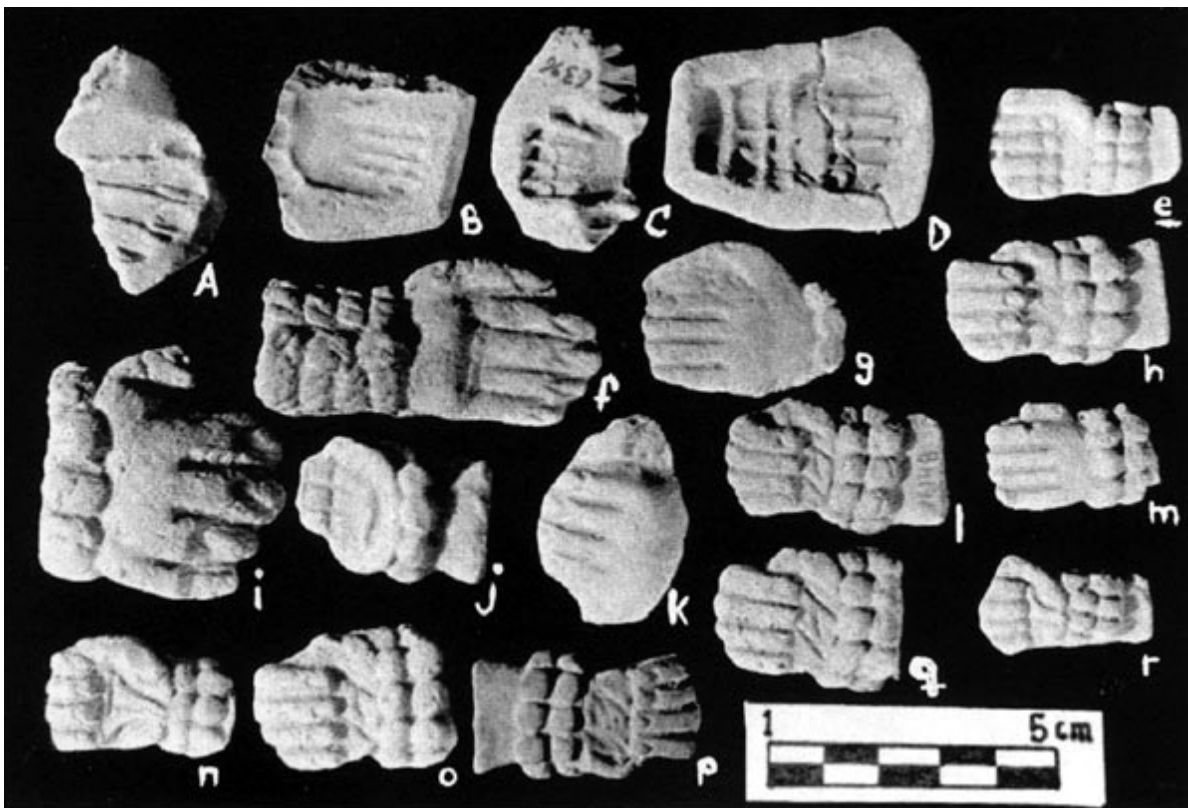


Photo 123. A, B, C, f, g, i. Extended hands. k. Hand holding an object. D, e, h, j, l, m, n, o, p, q, r. Hands in fists, note the bracelet and the lines of the hand.

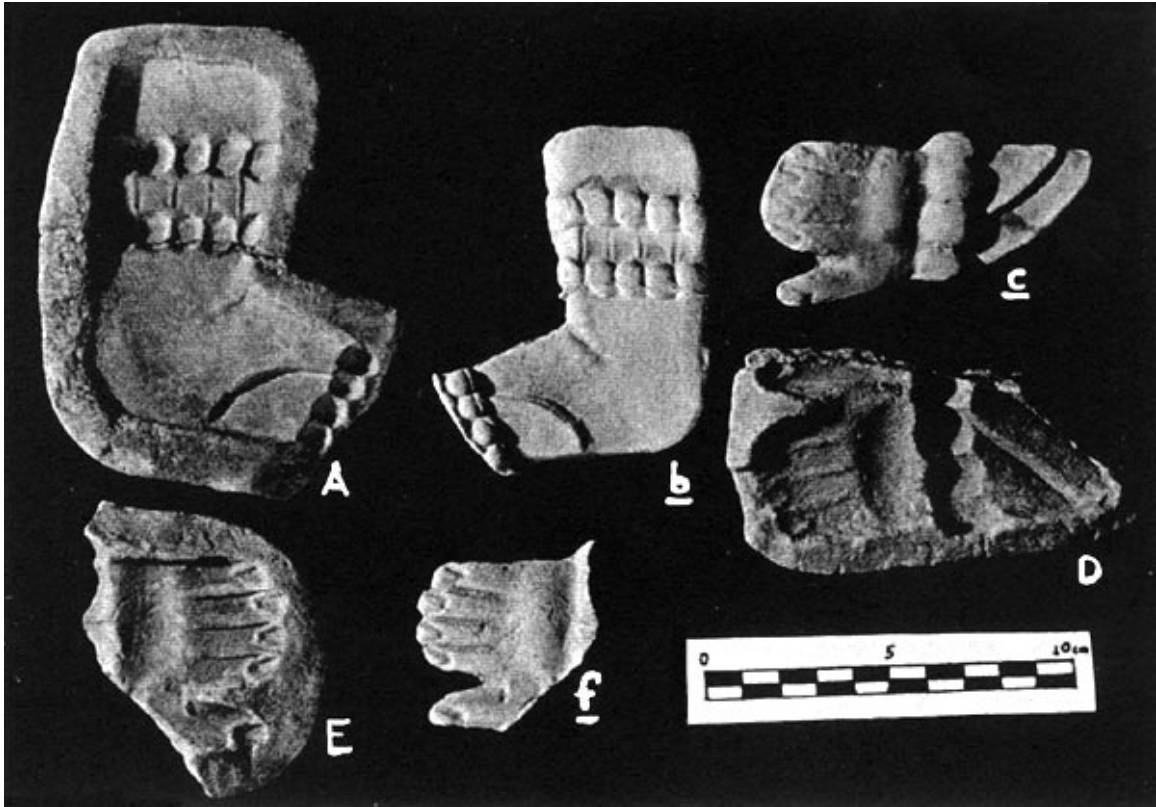


Photo 124. A, b. Arm with bracelet and wrist adornment. c, D, E, f. Extended hand with bracelet.



Photo 125. a, b, C, d, e, g. Hand holding an object, variants. f. Extended hand. Molded fragment.





Photo 126. a. Hand holding a vessel with a foamy substance. Note the rim drops.



Photo 127. a, b. Pieces similar to the preceding one. See [Photo 126](#).



Photo 128. a, b, c. Footprints.



Photo 129. A, b. Footprints. c, d. Fragments of flute representations with anthropomorphic adornment on the mouthpiece.