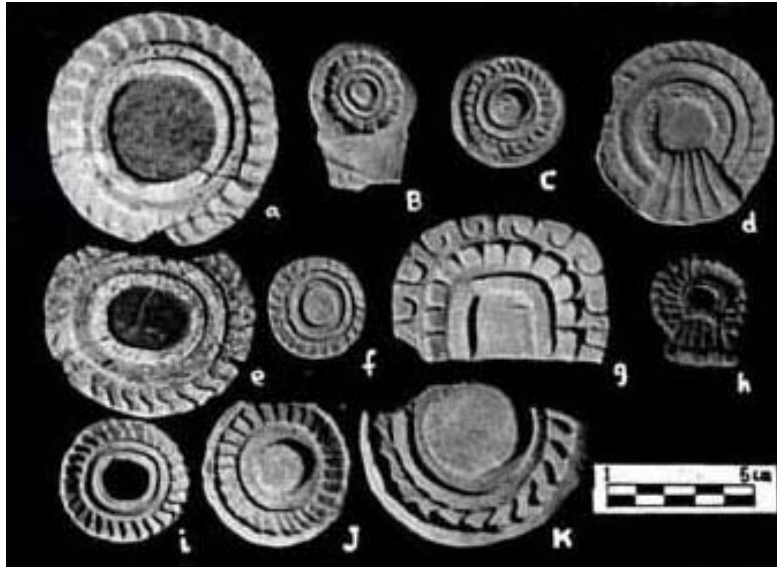


FAMSI © 2002: Saburo Sugiyama

Censer Symbolism and the State Polity in Teotihuacán



Research Year: 1998

Culture: Teotihuacán

Chronology: Late Pre-Classic to Late Classic

Location: Highland México

Site: Teotihuacán

Table of Contents

Introduction

Recording and Cataloging

Ritual Ceramics at a Workshop in the Ciudadela, Teotihuacán: Catalog

Presentation

Introduction

General Comments on Cataloging

Quantification Tables

[Note on the Conventions Used for Captions](#)

Catalog:

I. Phytomorphic: Realistic and Schematized Representations

II. Zoomorphic: Realistic and Schematized Representations

III. Anthropomorphic: Attributes of Deities and Characters

[IV. Other Motifs: Different Representations and Symbols](#)

V. Other Pieces: Censer Fragments and Molds

Bibliography

Data Base for Theater-type Censers Found in Teotihuacán and Abroad #1
"Adornos" and molds for censers from the "North Palace" in the Ciudadela,
Teotihuacán Archaeological Project 1980-82, INAH
"Adornos" and molds for censers from Compound "Group 5" of the Sector
N5W1,
Scholarship Program, INAH
"Adornos" and molds for censers from surface collection in Teotihuacán,
Teotihuacán Mapping Project
"Adornos" and molds for censers from the Project of the Feathered Serpent
Pyramid in 1988-89,
Arizona State University and INAH
Preliminary Comments
Sources Cited

Note on the Conventions Used for Captions

Considering this is a collection whose origin was a workshop fully dedicated to mold production, most pieces presented are molds and reproductions.

In those cases where only the mold could be recovered, and to obtain examples of the pieces involved, reproductions were made with the clay that modern potters from the village of San Sebastián Xolalpan nowadays use.

An alphabetical order was adopted for the reading of captions, making reference to what we have enunciated in the previous lines:

Therefore:

- A. Capital letters indicate: **Prehispanic Mold.**
- b. Small letters indicate: **Prehispanic Molded Reproduction.**
- c. Underlined small letters indicate: **Modern Reproduction Accomplished with a Prehispanic Mold.**

In the case of **Molded** pieces, they will be indicated throughout the text; to the effects of making comparisons of pieces between two photos, we have indicated: See Photo No....

Example:

- Photo No. 1.
 - B. **Mold.**
 - a, c, d, e, h, i. **Prehispanic Molded Reproduction.**
 - f, g. **Modern Reproduction Made with a Prehispanic Mold.**

IV. Other Motifs: Different Representations and Symbols.



Photo 130. a, b, c, Representations of miniature flutes.



Photo 131. a. Whistle, molded.



Photo 132. A, b, c, d, E, f, g. Representation of metates, metate manos and miniature tortilla mix.



Photo 133. a, b, c, d. Architectural representations.

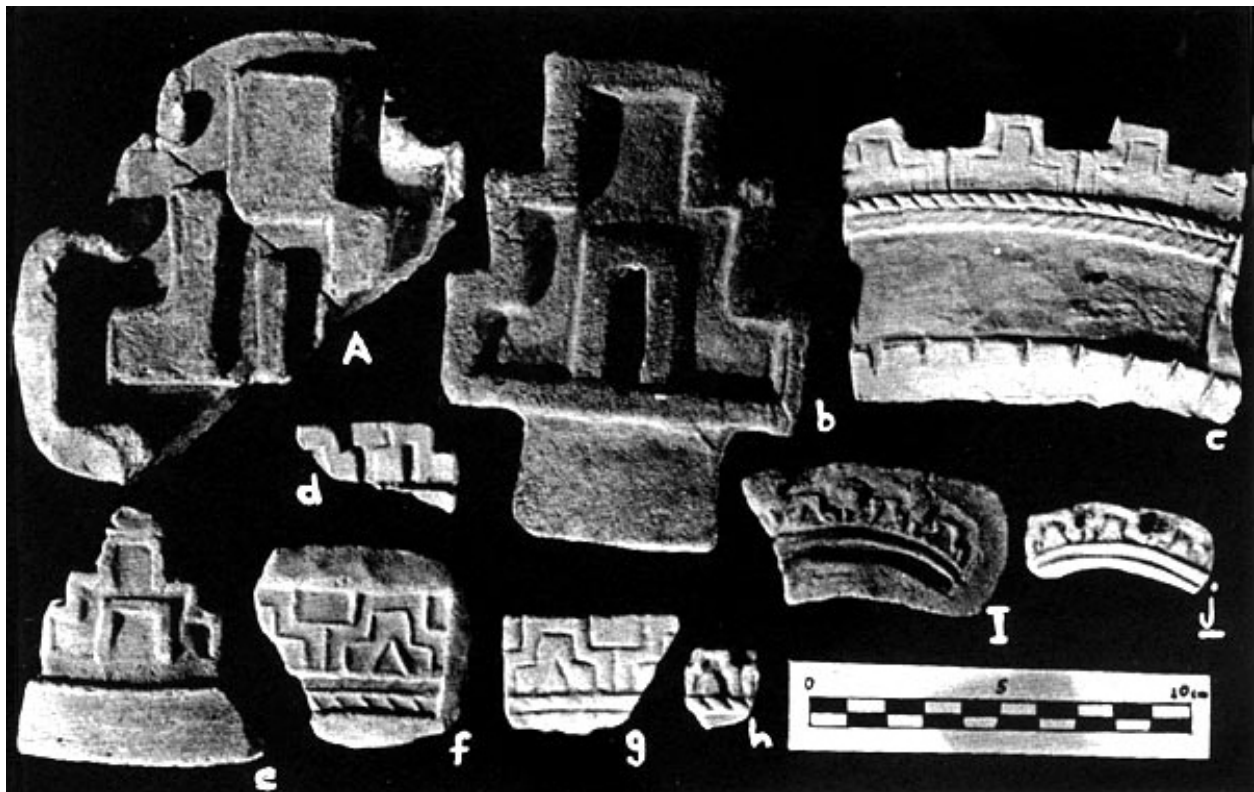


Photo 134. A, b, c, d, e, F, g, h, i, j. Merlon representations.

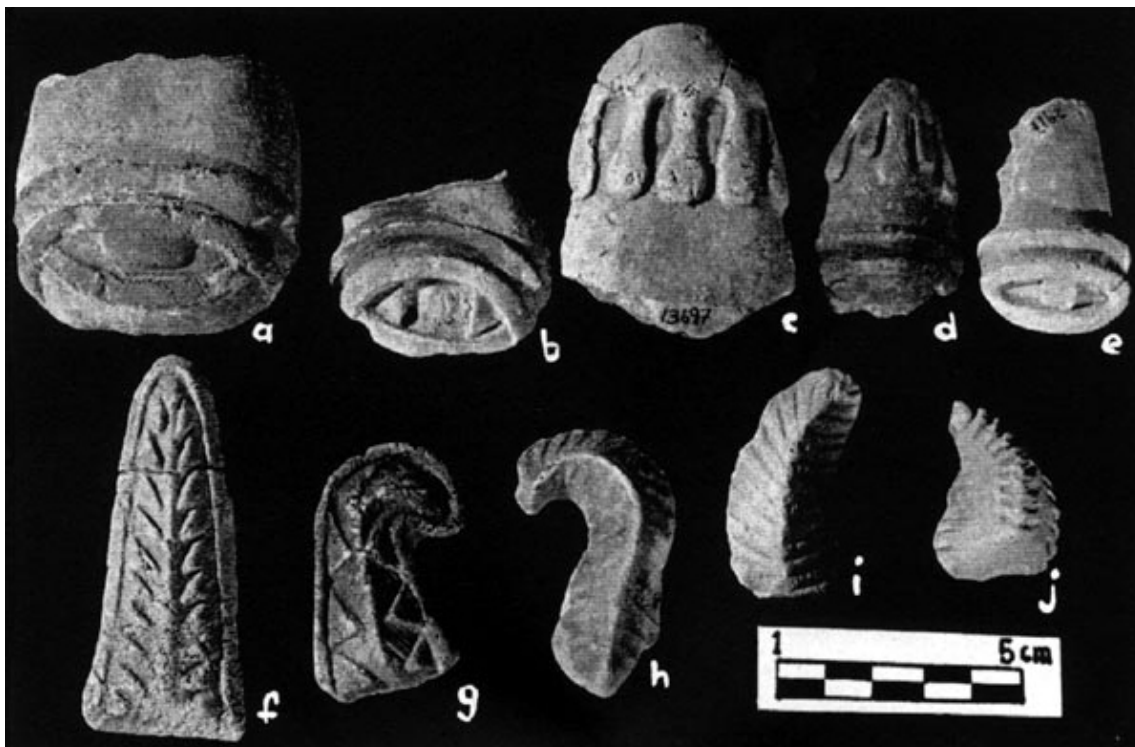


Photo 135. a, b, c, d, e. Fragments of a same representation: an eye at the base of an object whose extreme is showing drops. See [Photo 136](#). f, g, h, i. Knives, variants. j. Arrow head. See [Photo 138](#).



Photo 136. a, b, c, d, E, f, g, h, i, j. Knife with drops, variants.



Photo 137. A, B. Plaque with knives and volute rims. C, D, e, f, g. Fragmented piece, part of a chimalli with an arrow head.



Photo 138. A, B. Arrow head with drops. c, d. Arrow heads with tuft. E, f. Fragmented piece, part of a chimalli with an arrow head.



Photo 139. a, B, c, d, e, f, g, h, i, J, k, l. Arrow heads with feather adornments and tuft, variants.



Photo 140. A, b, c, d, e, F, g, h. Volutes, variants.

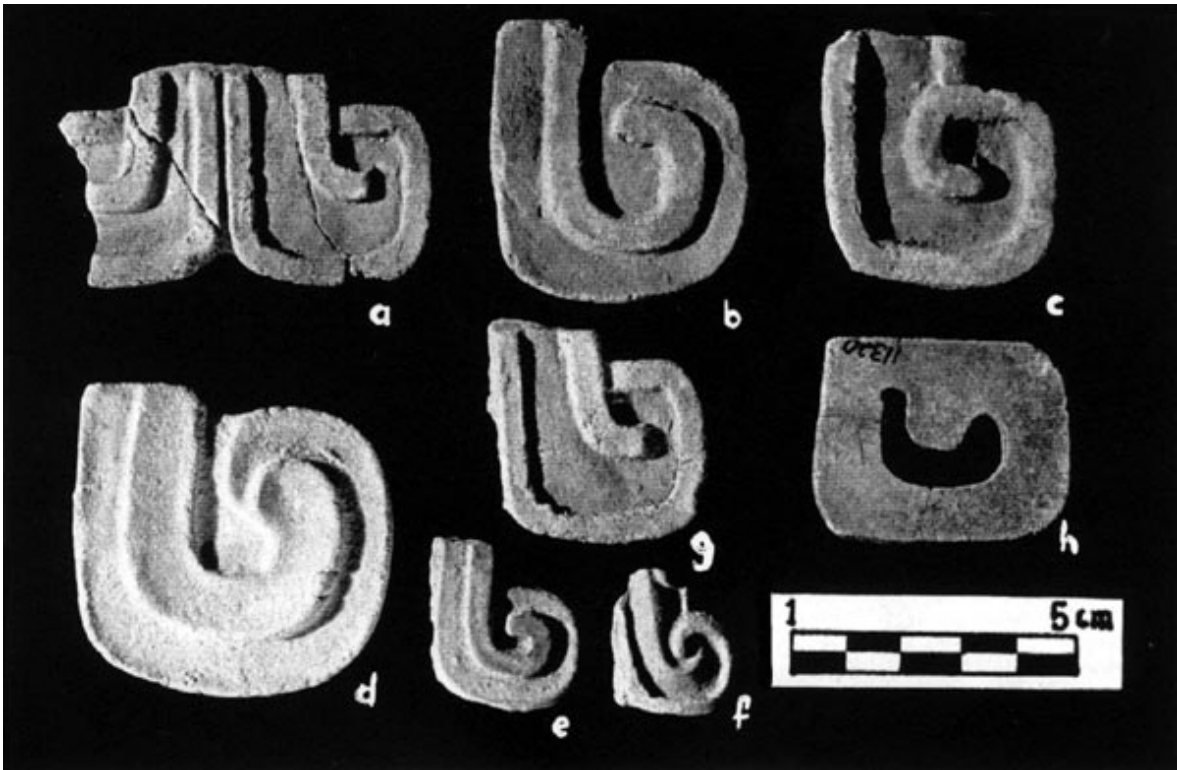


Photo 141. a. Double spiral (bifid tongue). See [Photo 59](#). b, c, d, e, f, g. Volutes. Variants. h. Volute, small drilled plaque.

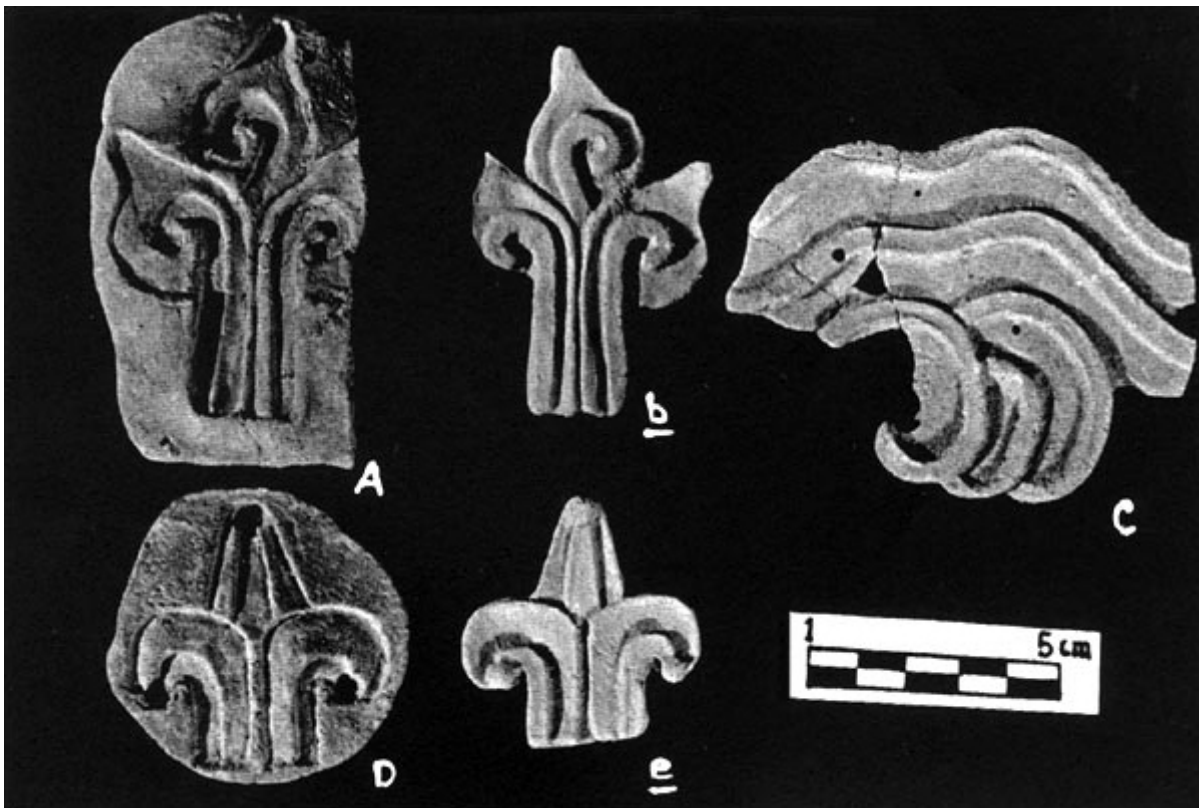


Photo 142. A, B. Spirals (flames?). c. Plaque fragments with undulating lines and spirals. D, E, Three volutes with tufts in the extremes. See headdress in [Photo 71](#). A, B.



Photo 143. a. Censer plaque with bands, spirals, feathers, and triple mountain motifs. b, c, g, h, i. Volutes. d, e, f. Manta fragments with volutes. m. Fragments of feline fauces. See [Photo 36](#). b.

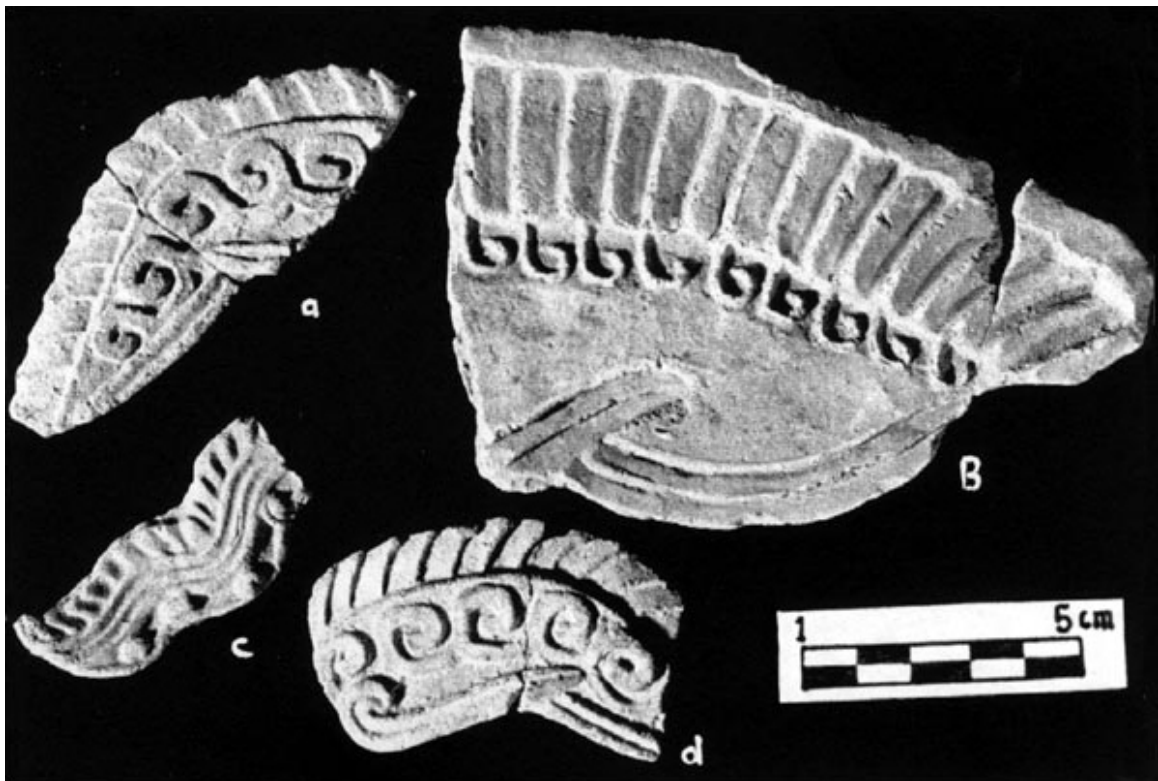


Photo 144. a, B, d. Wings with volutes. See [Photo 22](#). b. c. Serpentine feature with feathers, associated with Tlaloc. See [Photo 60](#). b, d.



Photo 145. a, b, c, d, e, f, g, h. Spirals with feathers. Fragments, possible terminations of feline fauces. See [Photo 36](#).

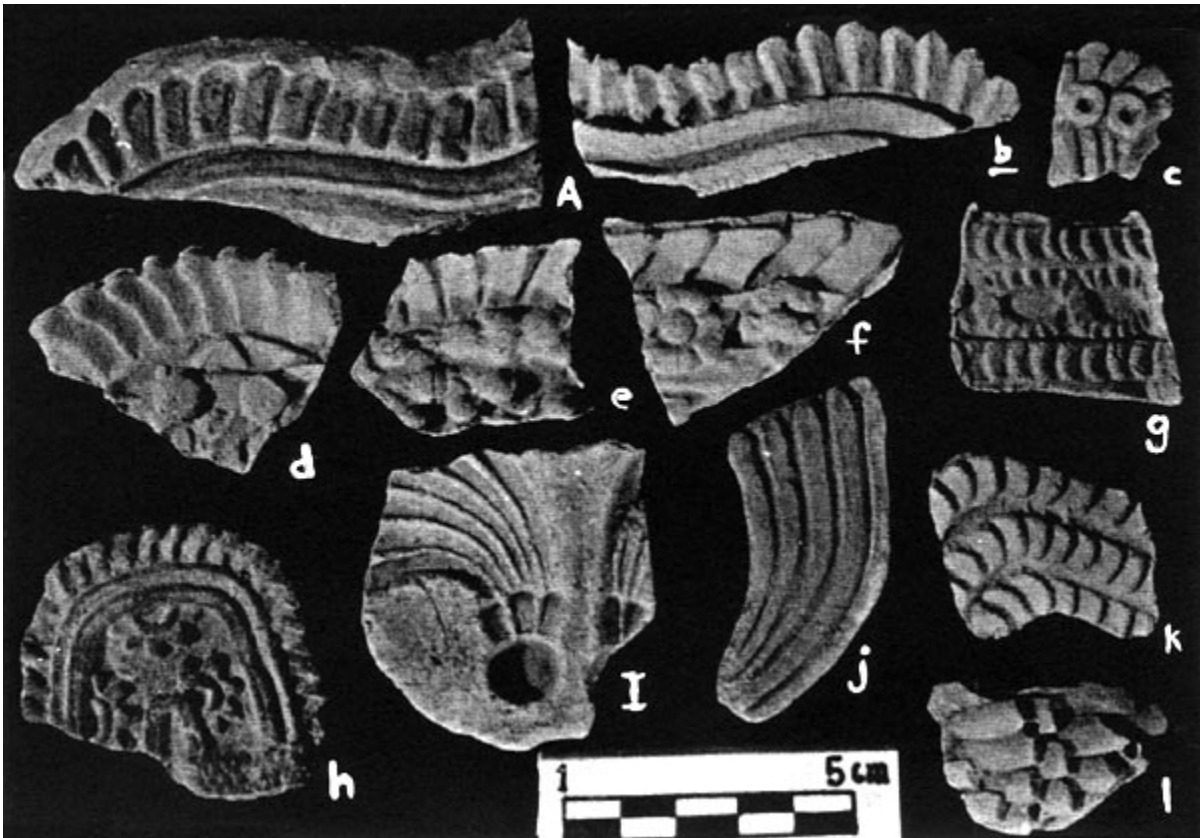


Photo 146. A, b, c, d, e, f, g, I, j, k, l. Different motifs with feather adornments. Fragments.

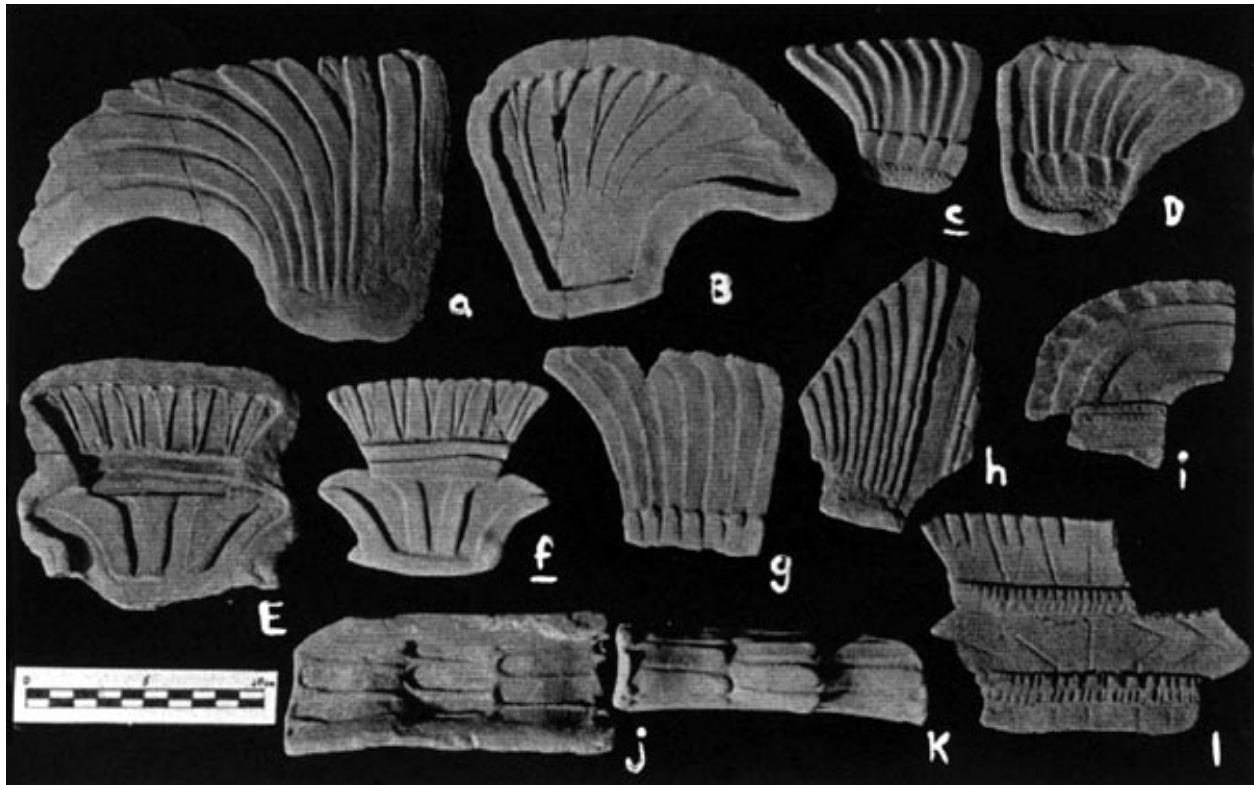


Photo 147. a, B, c, D, g, h. Feather tufts. E, f, i, l. Adornments with feathers. J, k. Feathers. See [Photo 63](#). g.

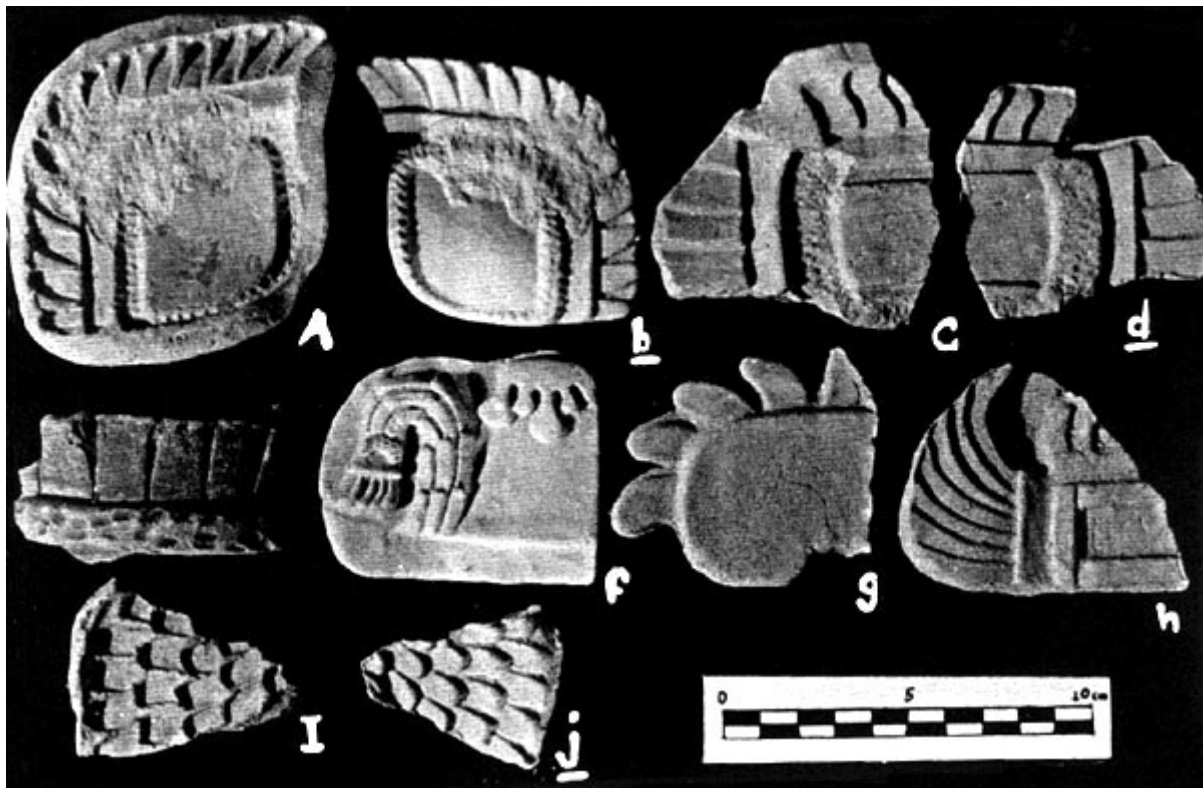


Photo 148. A, b, C, d, e, g, h, l, j. Adornments with feathers. f. Adornments with feathers and drops.



Photo 149. A. Adornment with geometric motif. b, c. Braided motifs. d, e, F. Cordon motifs.

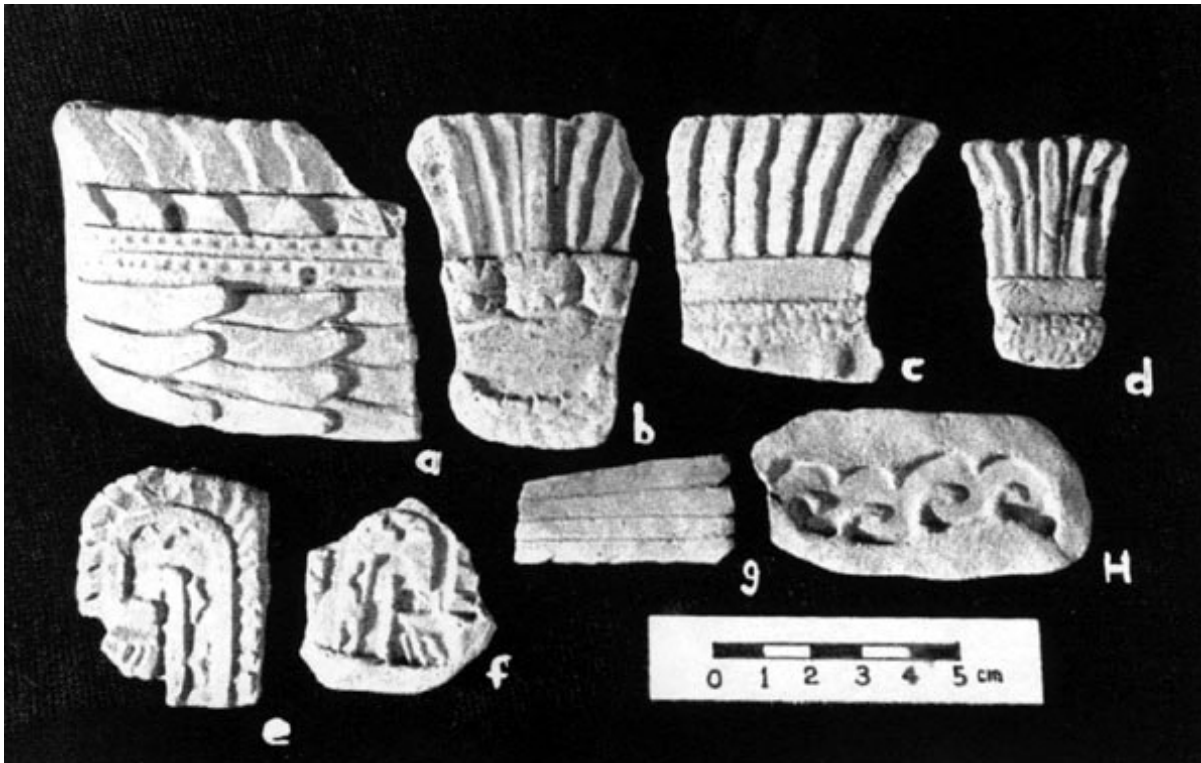


Photo 150. a, b, c, d, g. Motifs with feathers. e, f. Motifs with feathers and stars. See [Photo 49. g.](#); [Photo 146. h.](#) H. Serpentine motif with spirals. See [Photo 60. b.](#)

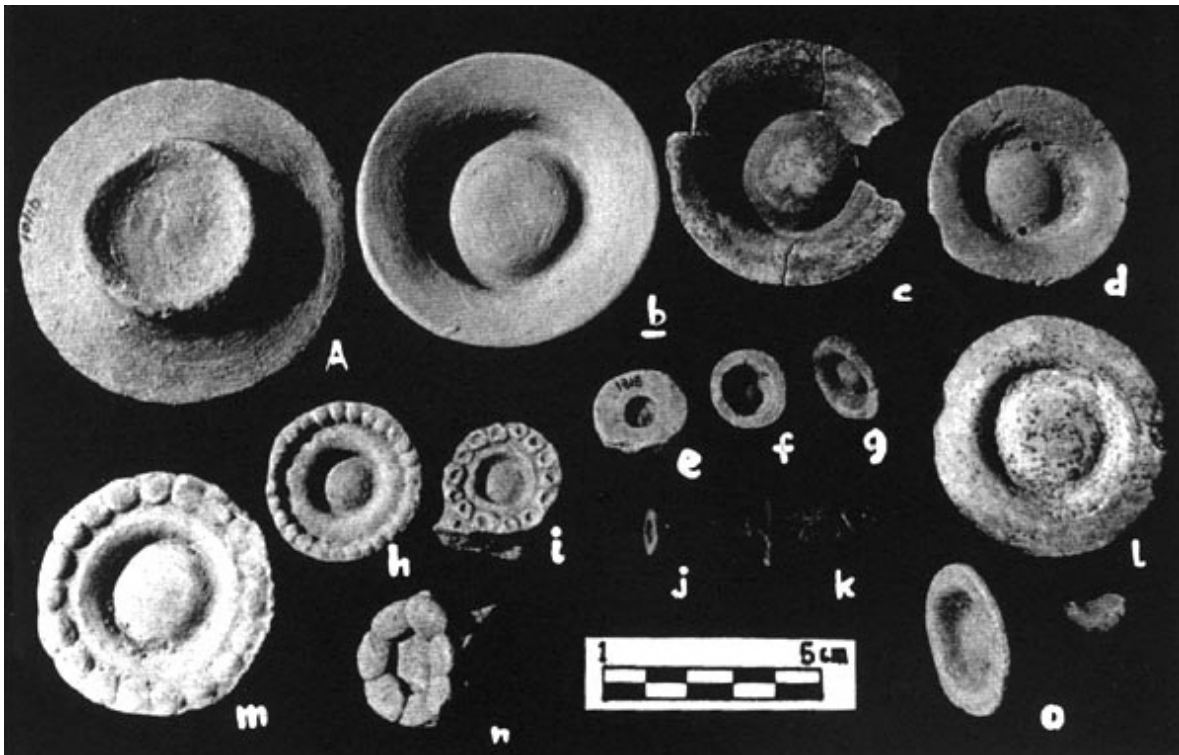


Photo 151. A, b. Form (convex mold) and earflare reproduction. c, d, e, f, g, h, i, j, k, l, m, n, o. Earflares for figurines. k. Small form with handle to manufacture figurine earflares.

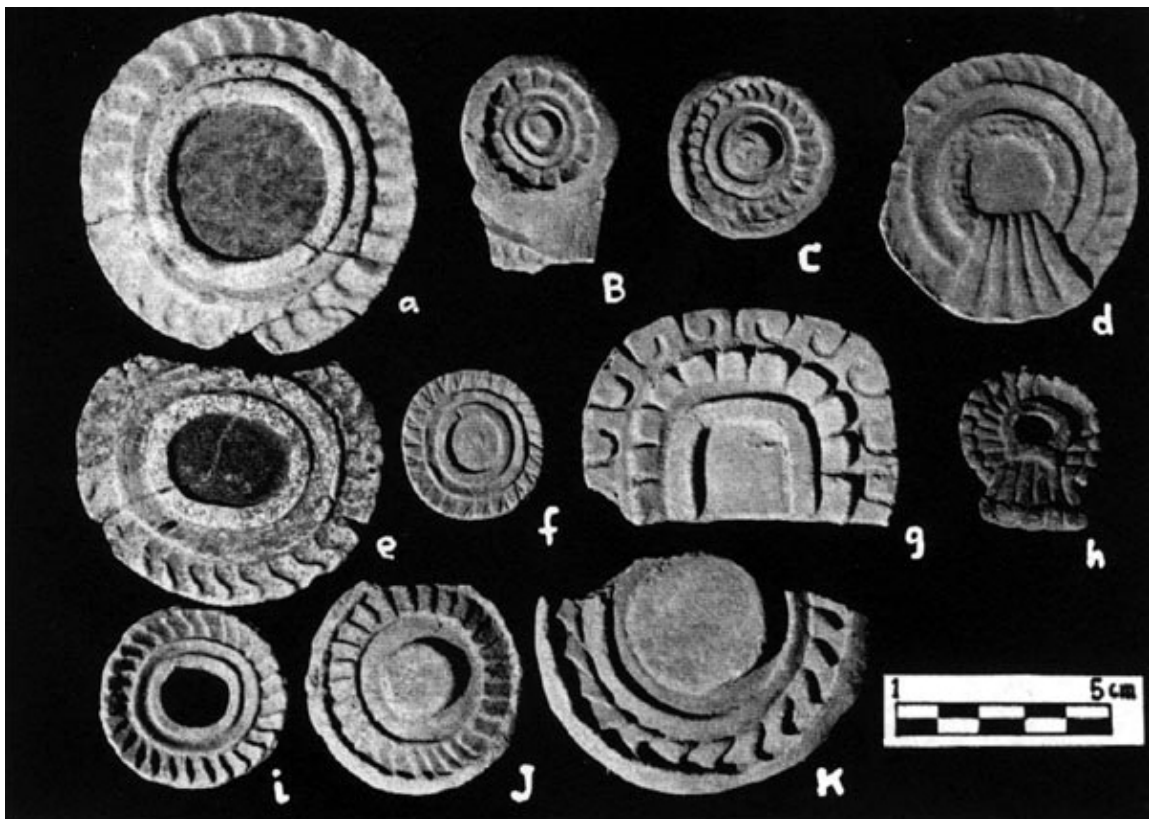


Photo 152. a, B, C, d, e, f, h, i, J, K. Circular motifs with feathers. g. Motif with feathers and spirals.

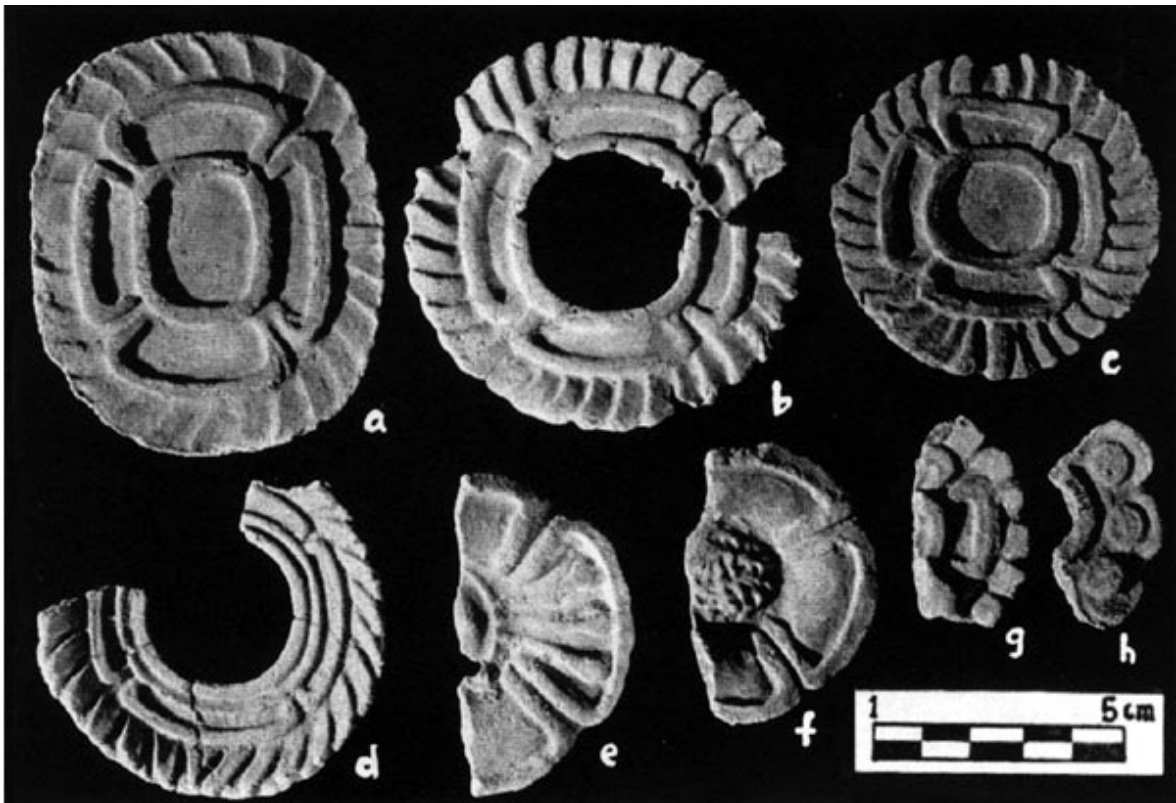


Photo 153. a, b, c, d. Four-petal flowers with feather adornment. e, f, g, h. Flowers.

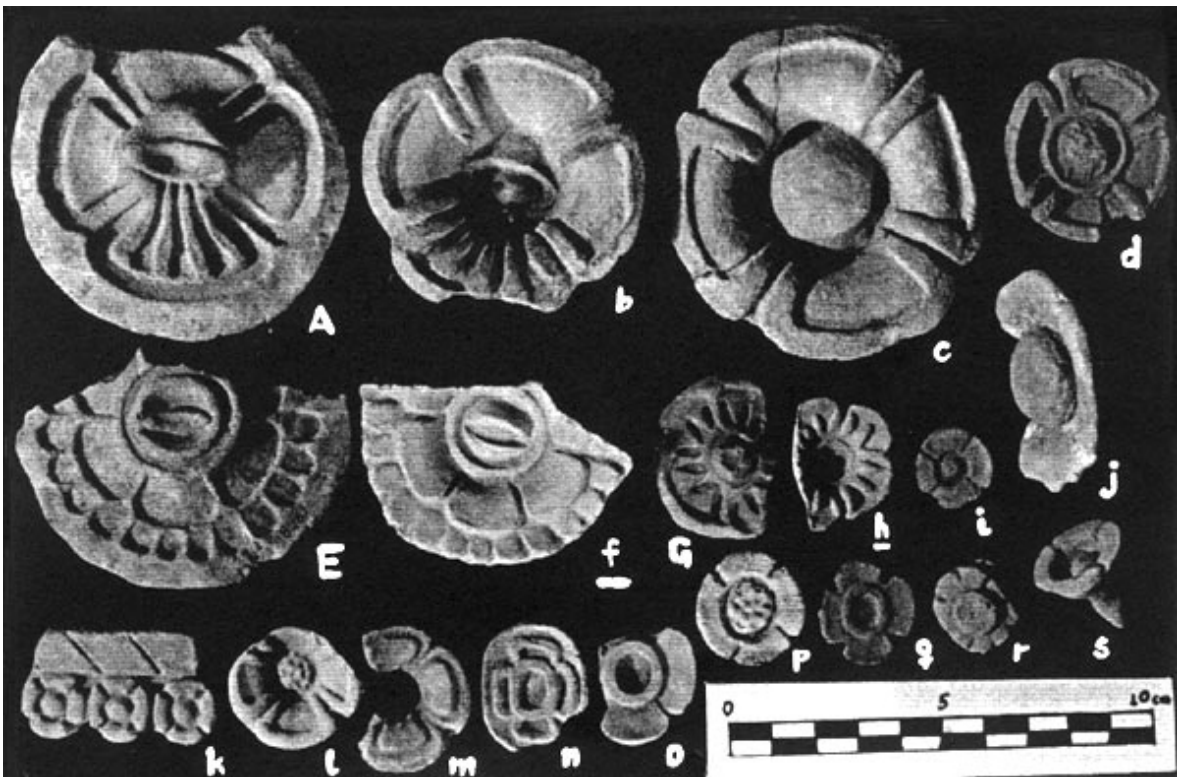


Photo 154. A, b. Four-petal flowers with three drops falling from the central eye. c, d, g, h, i, k, l, m, n, o, p, q. Four-petal flowers, variants. E, f. Flower with an eye at the center. j, r, s. Earflares of figurine in the shape of a flower.



Photo 155. A, b. Figure with central circle. C, d. Same motif associated with eye and drops. e. Same motif associated with bird. See [Photo 19](#). b, c.



Photo 156. a, b. Censer rim fragments with motif of four-petal flower and cotton flower. See [Photo 10](#).



Photo 157. A, b. Censer ornament with motif of triangles, feathers, and bundles with flame spirals. c, d. Bundles with flame spirals. e, f. Bundles with feathers.



Photo 158. A, b, c, d, e, f. Bundles with feathers.

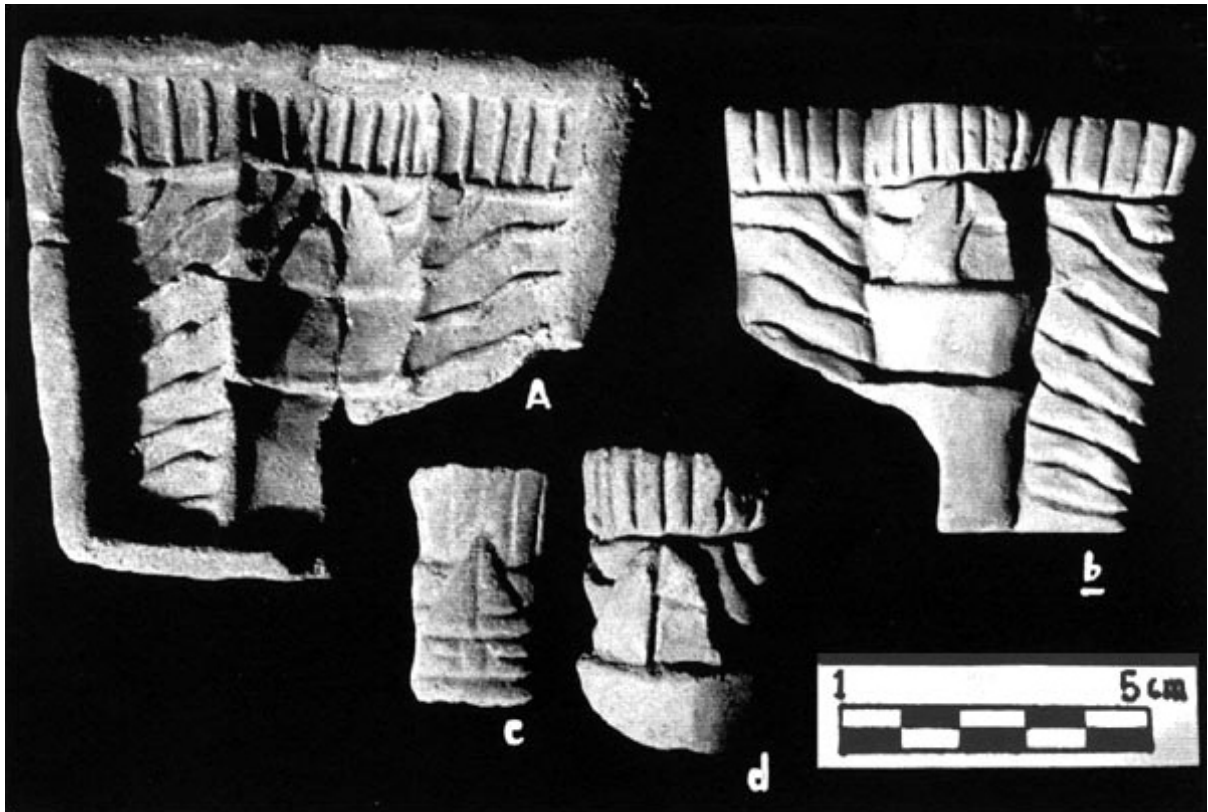


Photo 159. A, b, c, d. Bundles with triangular figures and feathers.



Photo 160. a, b, c. Bundles.

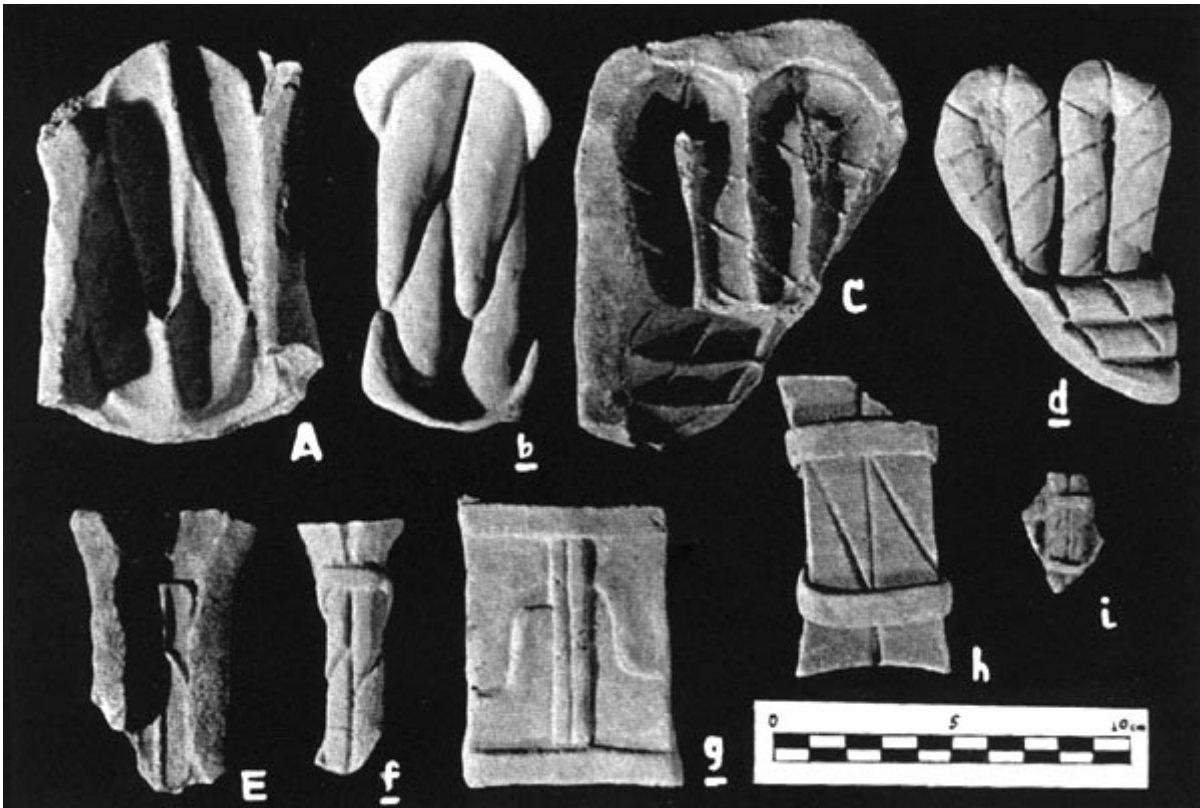


Photo 161. A, b, C, d, E, f. Strings with knot, variants. g, h, i. Stylized knots, variants.

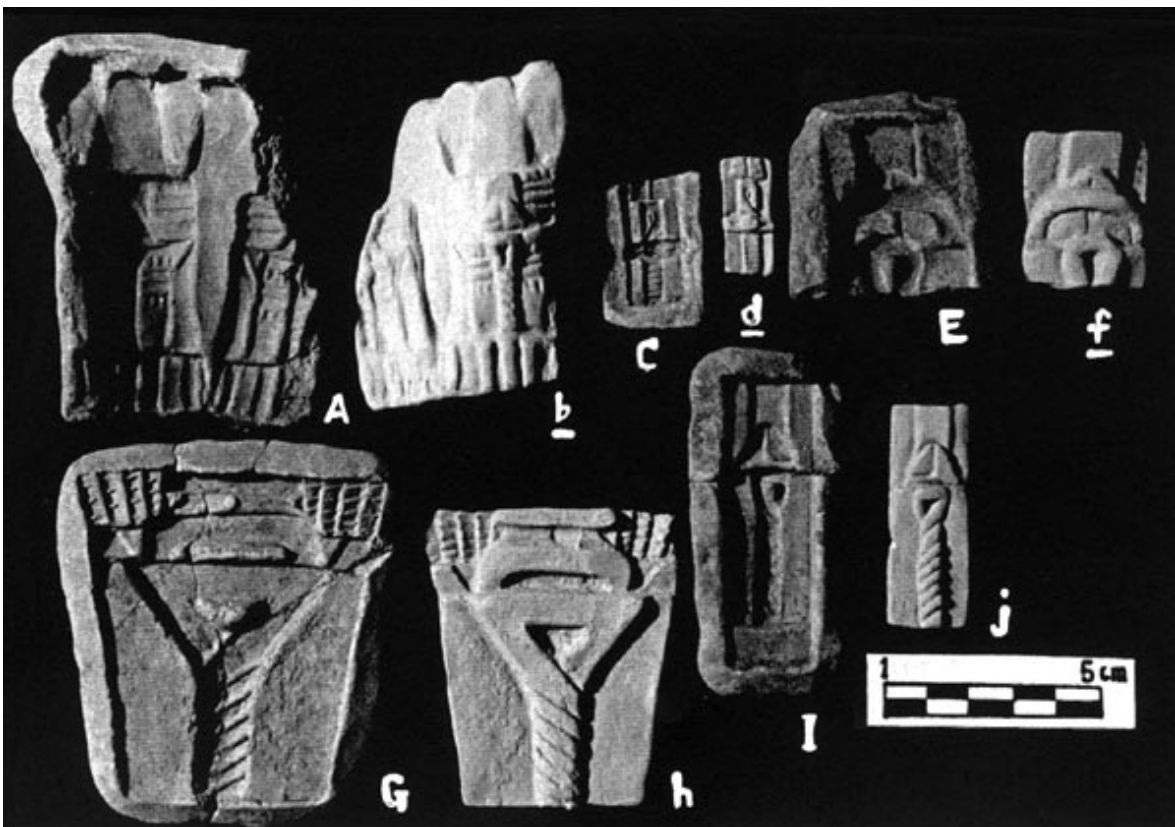


Photo 162. A, b, C, d, E, f, G, h, I, j. Twisted strings with other motifs, variants.



Photo 163. A, B, C, D, E, F, G, H, I. Twisted strings, variants.

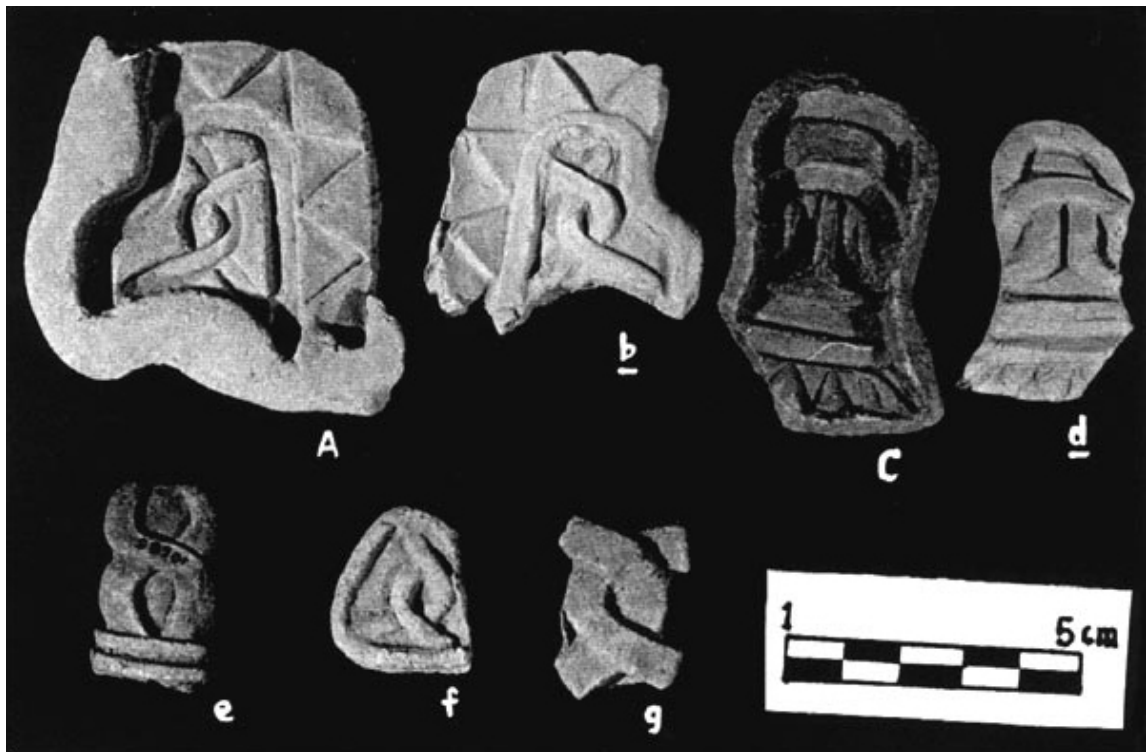


Photo 164. A, B, C, D, E, F, G. Intertwined strings, variants.

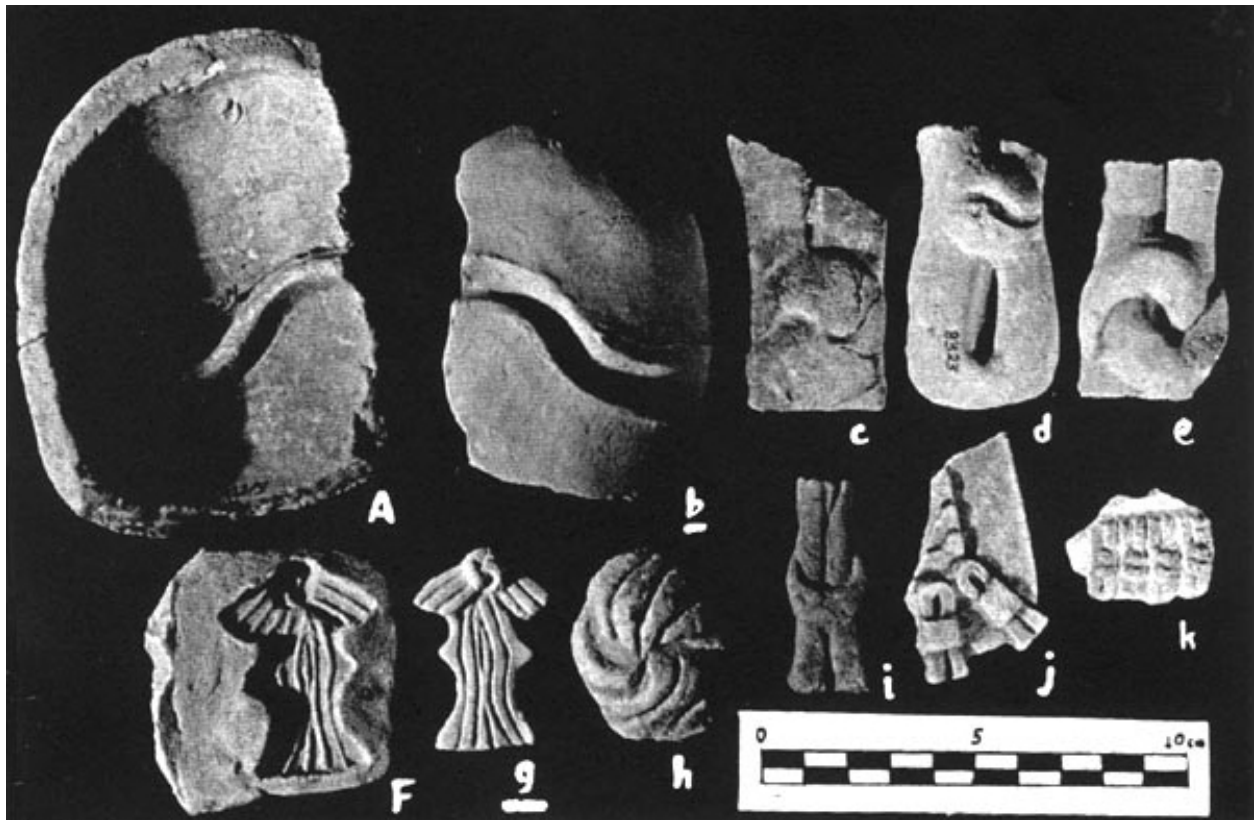


Photo 165. A, b, c, d, e, F, g, h, i, j, k. Knots, variants.



Photo 166. a, b, c, d, e, f, g, h, i, J, k. Reptile eye glyph, variants.



Photo 167. A, b, c, d, e, f, G, h, i. Reptile eye glyph, variants.

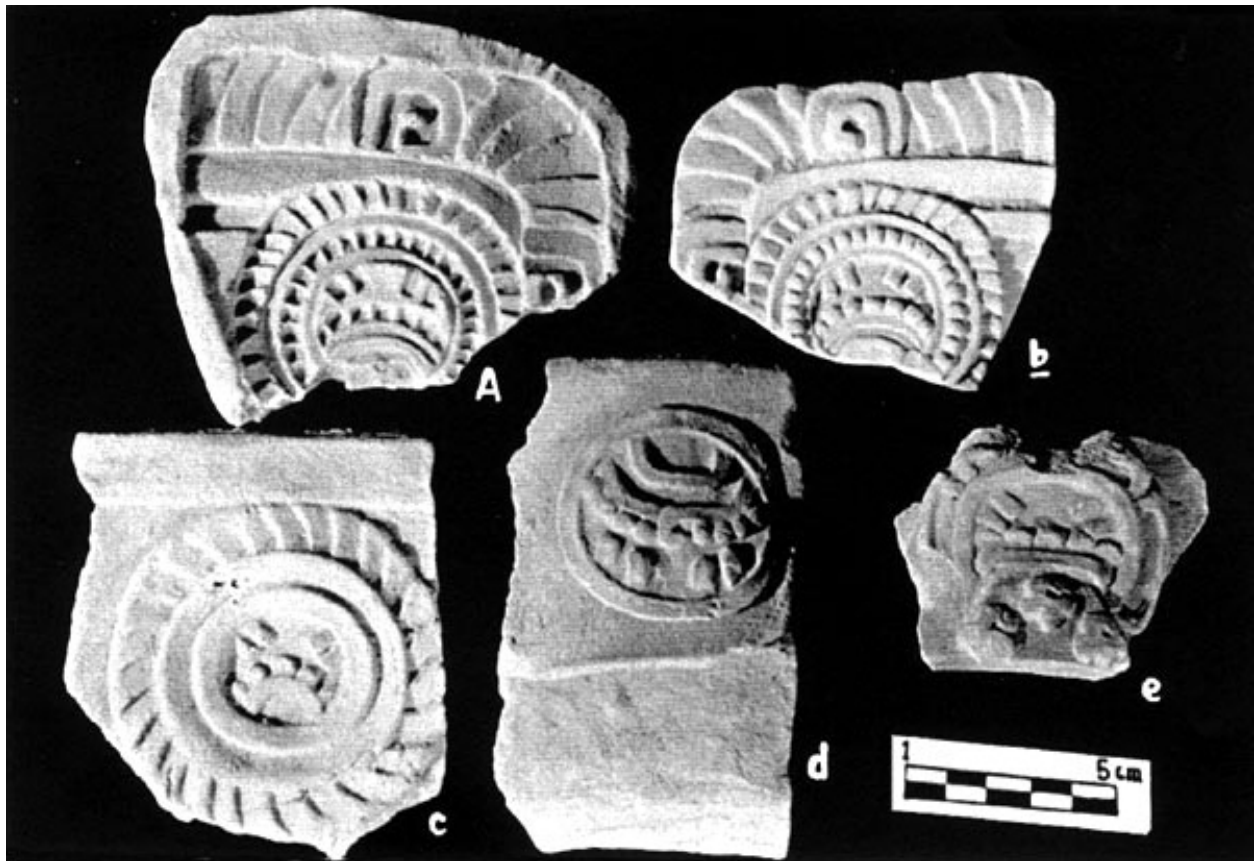


Photo 168. A, b, c, d, e. Reptile eye glyph, variants.

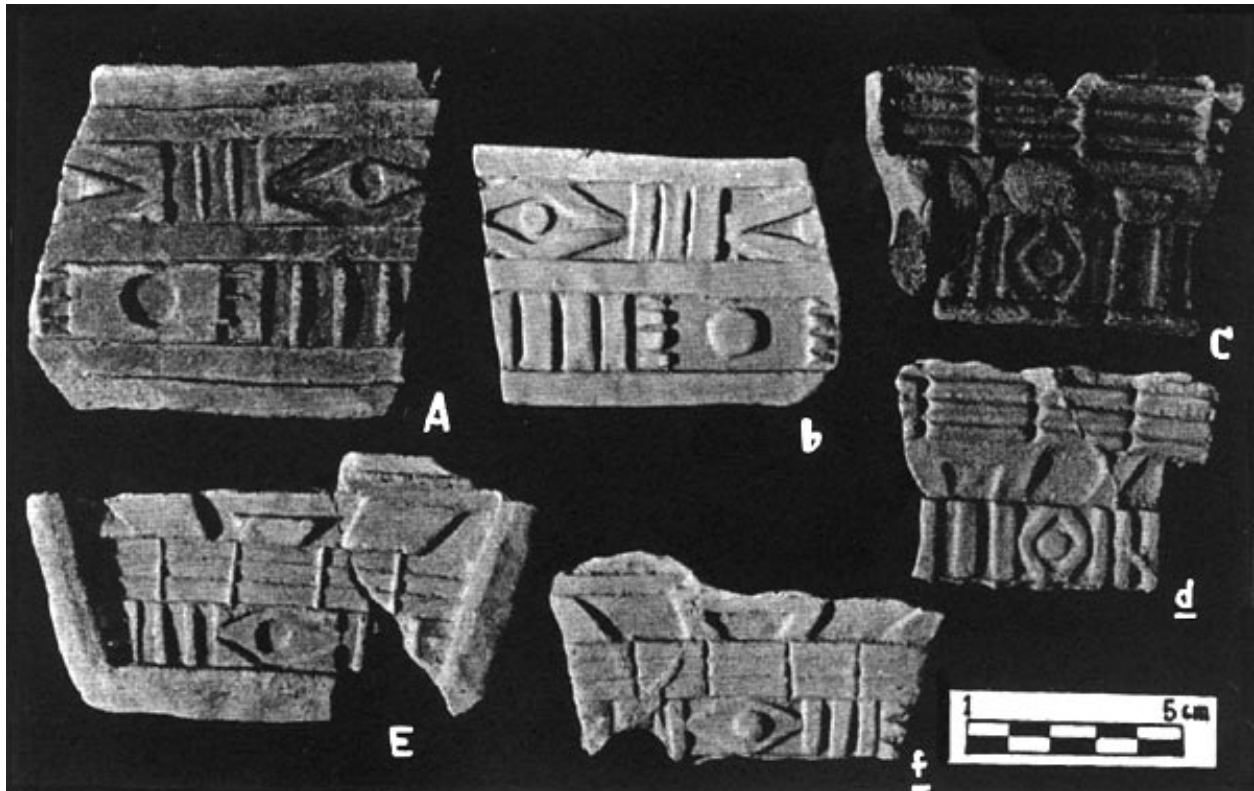


Photo 169. A, b, C, d, E, f. Motifs in rhombs and bars, generally associated with Huehuetotl, variants.



Photo 170. A, b, c, d, e, f, g, h. Mantas, variants.



Photo 171. a, b, c, d, e, f. Mantas, variants.

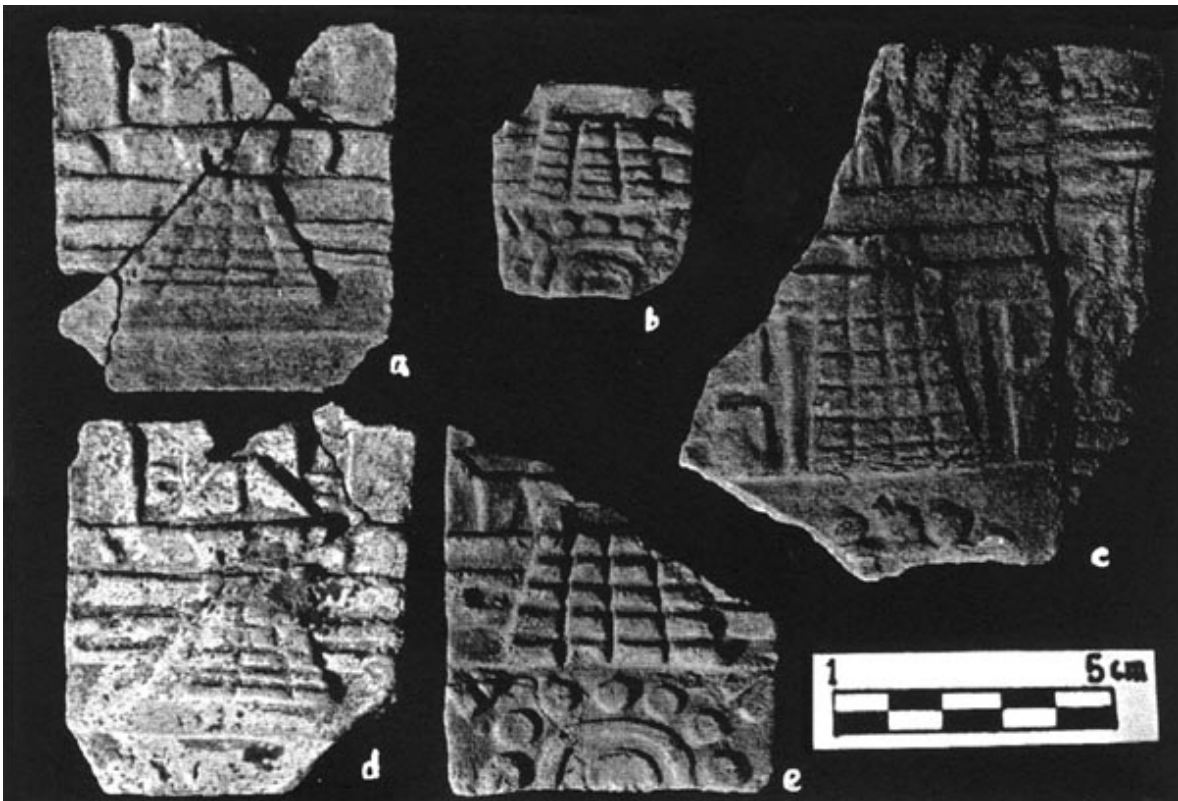


Photo 172. a, b, c, d, e. Mantas, variants.



Photo 173. a, b, c, d. Mantas, variants.



Photo 174. a, b, c, d, e. Mantas, variants.



Photo 175. A, b, c, d, e. Mantas, variants.



Photo 176. a, b. Fragments of figurines with earflares and butterfly nose plugs.



Photo 177. a, b, C, d. Censer plaques with feather, bands, and eye motifs. e, f, g. Censer bowl rims with eye-shaped appliques, variants.

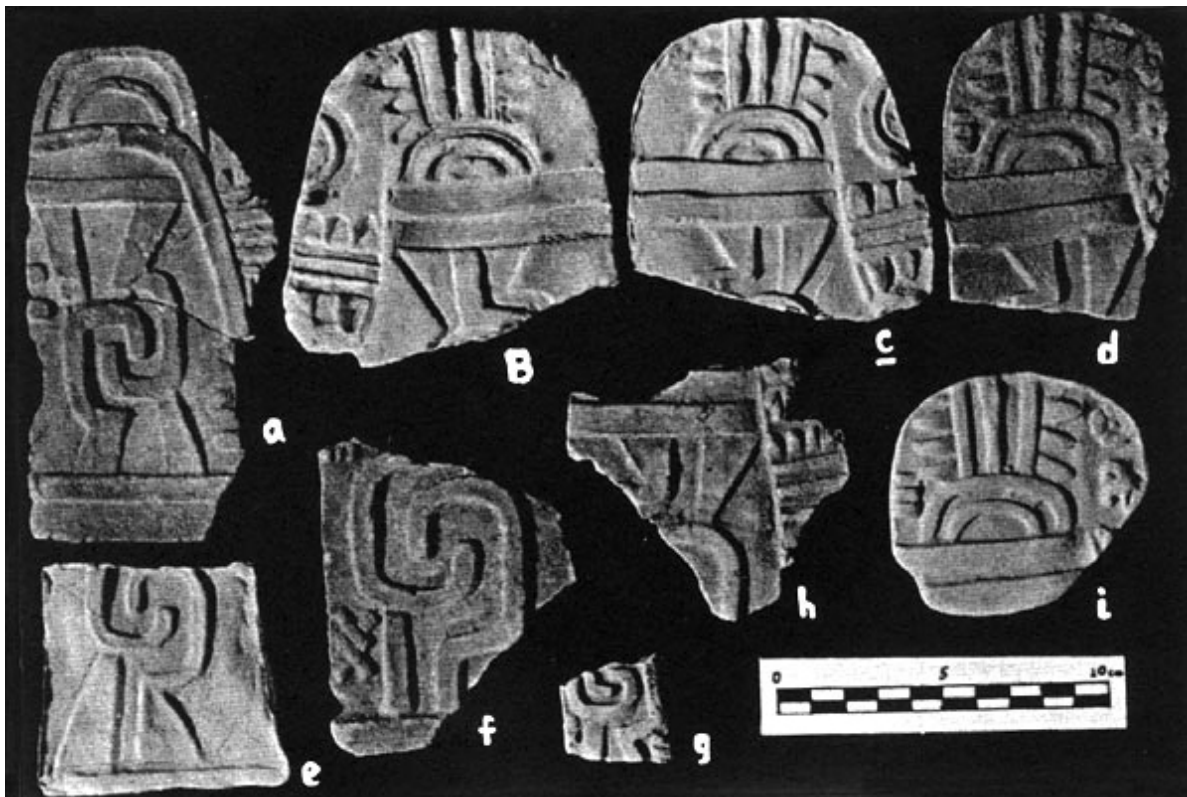


Photo 178. a, B, c, d, e, f, g, h, i. Censer lateral plaques with central motif of interlaced volutes, variants.

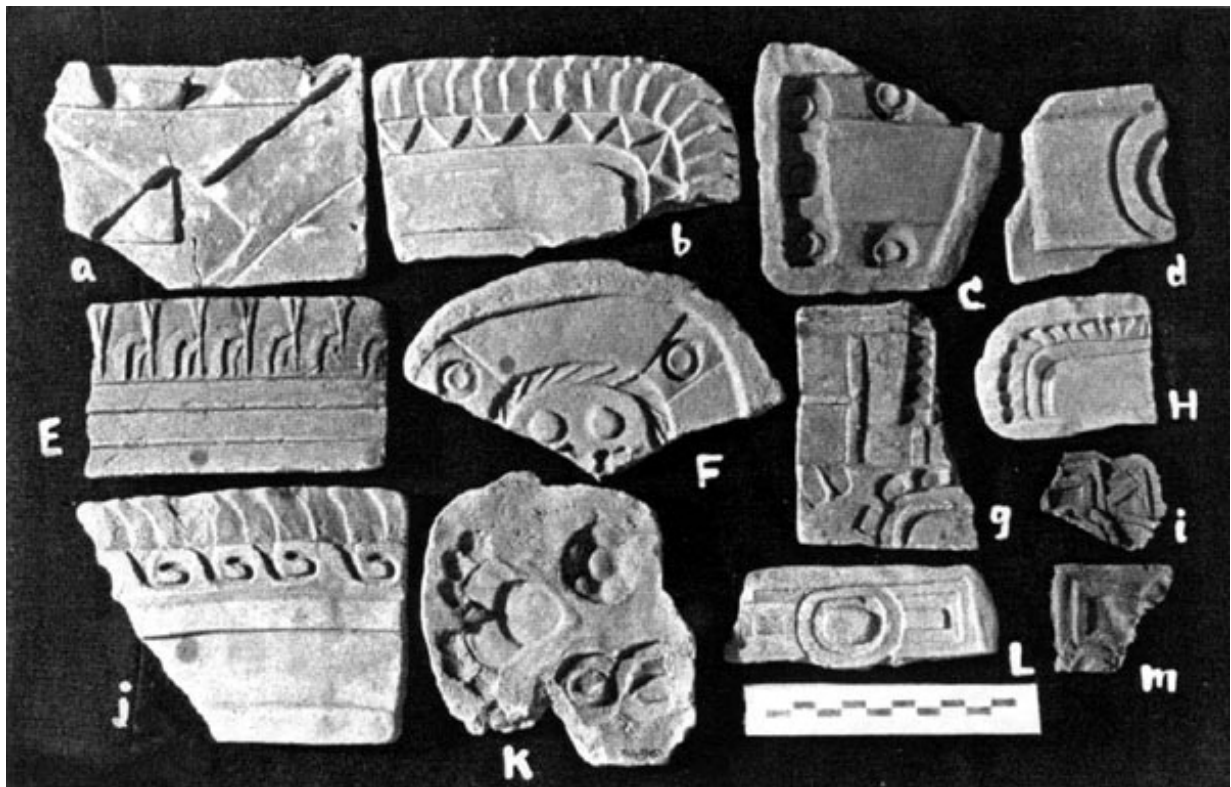


Photo 179. a, b, C, d, E, F, g, H, i, j, K , L , m. Censer plaques, variants.

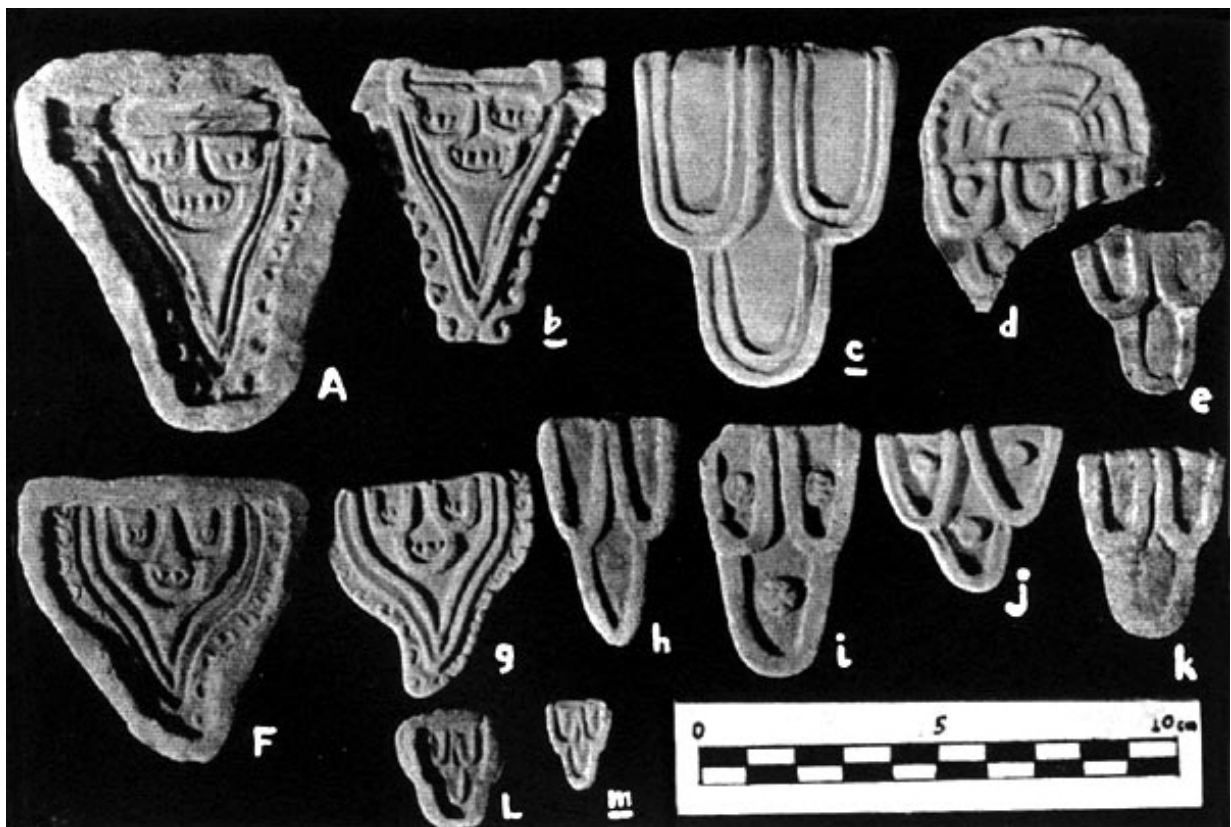


Photo 180. A, b, c, e, F, g, h, i, j, k, L, m. Triple mountain, variants. See [Photo 55](#). d. Flower with motif resembling the triple mountain.



Photo 181. a, b, c, d, e, f, g. Quincunx, variants. h, i, j. Circular elements with different adornments.

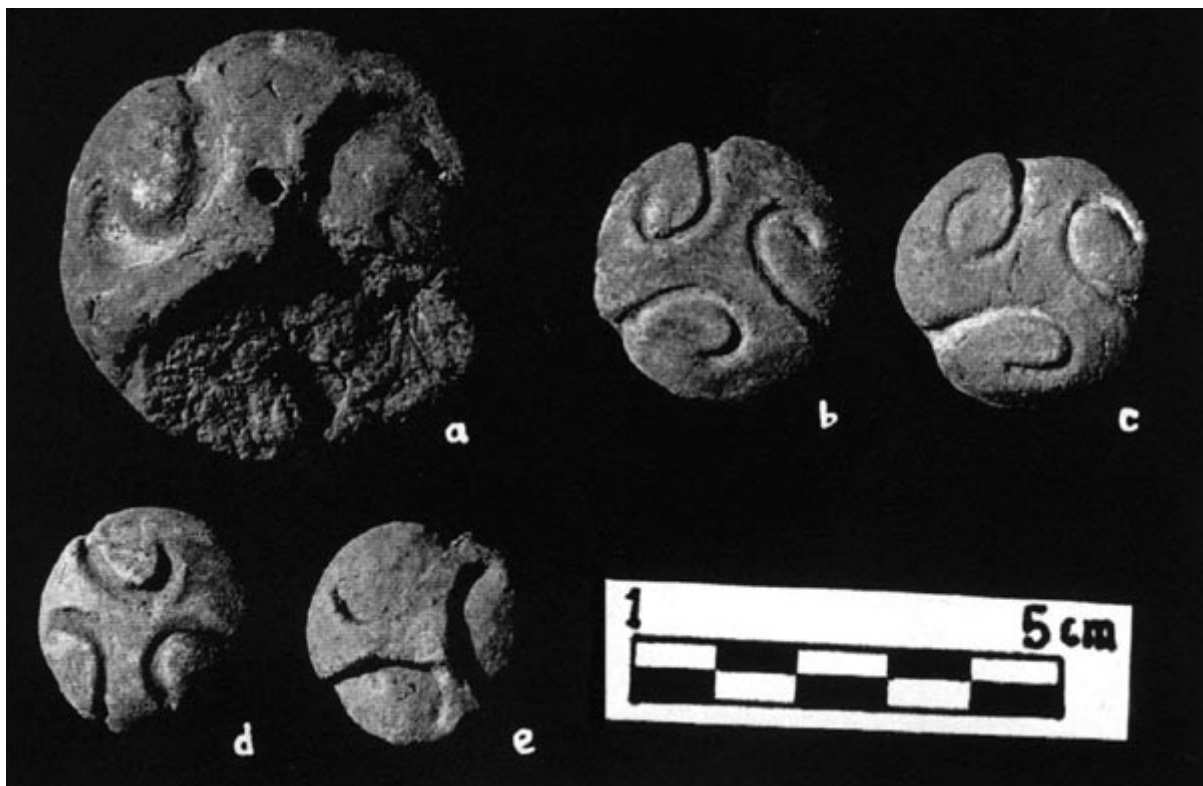


Photo 182. a, b, c, d, e. Triple volute, some showing red pigment.



Photo 183. a. Censer appliqués with feather ornaments and other motifs.



Photo 184. A, b, C, D, e. Possible nose plugs (Langley; 1986). See [Photo 205](#). b, c.; [Photo 206](#). f.; [Photo 207](#). d.



Photo 185. A, b, c, d, e. Motifs in double lobule with undulating lines.

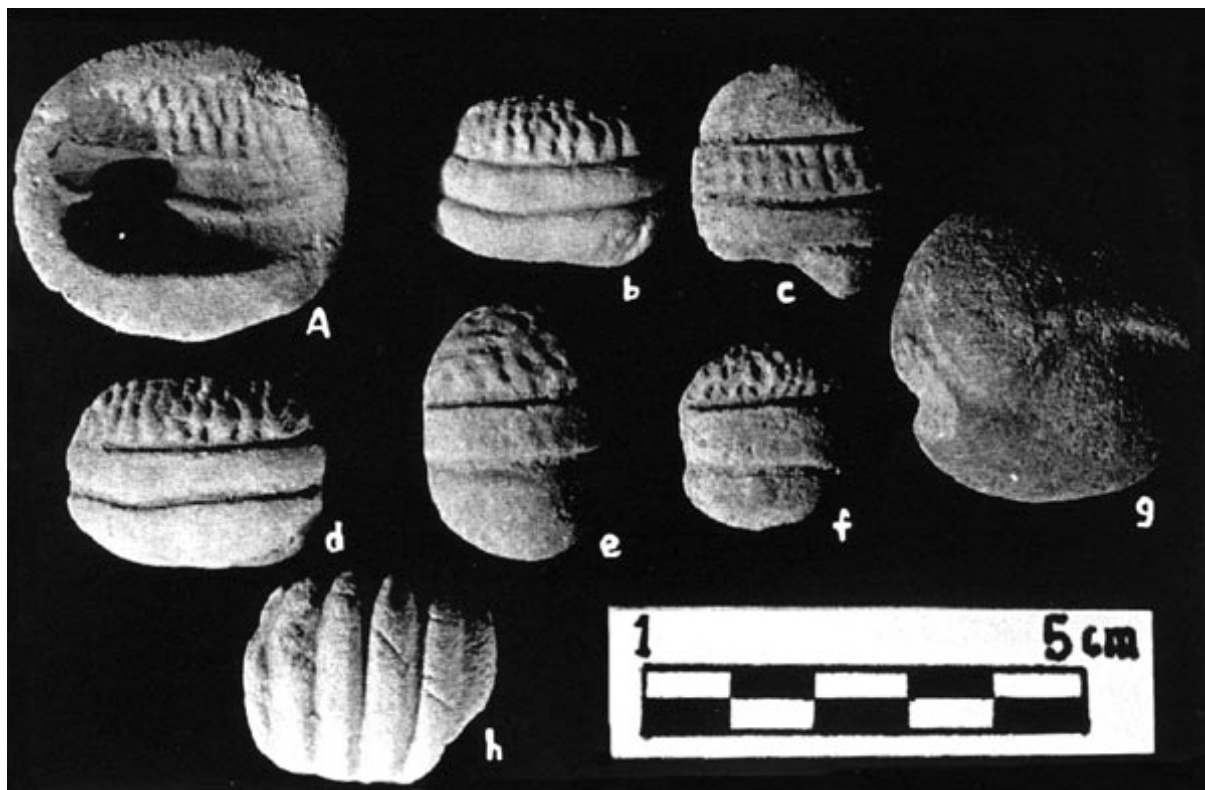


Photo 186. A, b, c, d, e, f. Elements with bands and puncheons. See [Photo 126.](#); [Photo 127.](#); [Photo 206.](#) e. g. Small circular piece. h. Hand. See [Photo 126.](#); [Photo 127.](#)



Photo 187. A, b. Band fragment with two motifs: a part of a cartouche with a sophisticated representation at the inside, and another figure in the shape of a leaf.



Photo 188. A, b. Band fragment with motifs similar to those in the preceding photo.

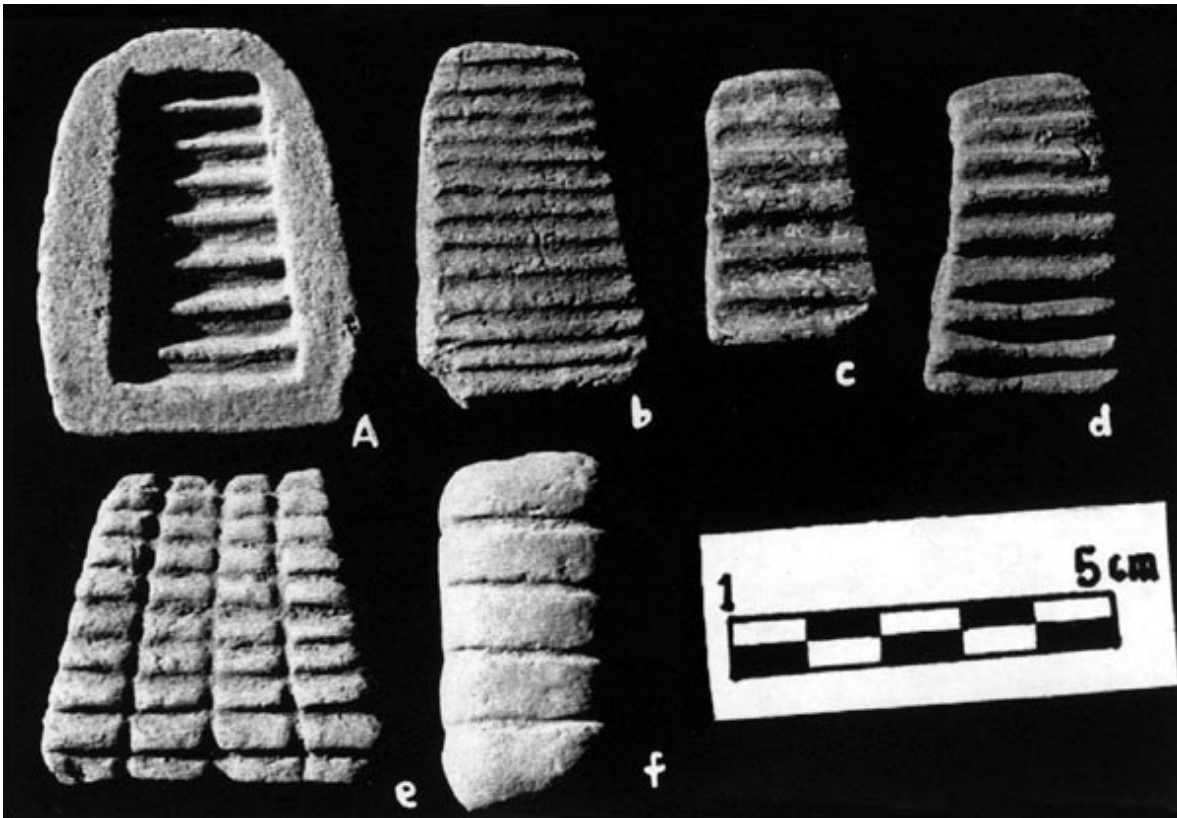


Photo 189. A, b, c, d, e. Stepped figures. See [Photo 172.](#); [Photo 173.](#) c.; [Photo 176.](#) b. f. Object with bands.



Photo 190. a. Fragment of plain plaque. b. Figure with eye and volute features. c. Small molded object.

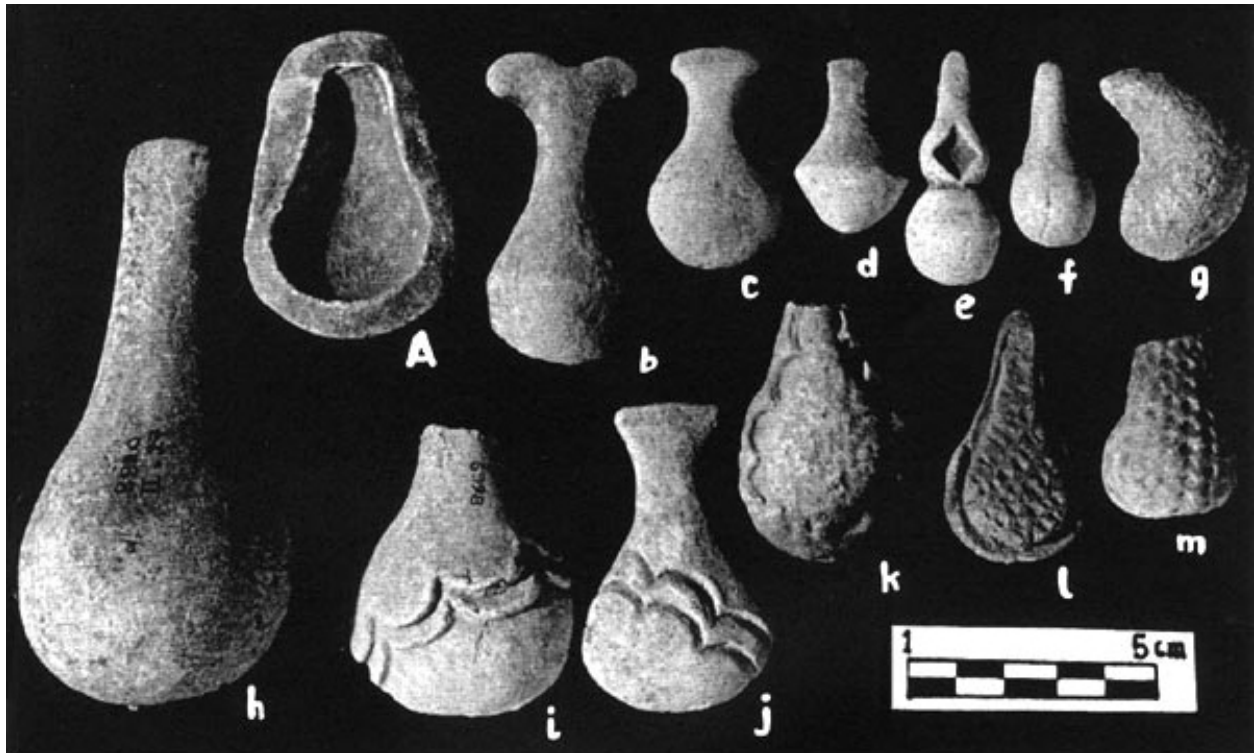


Photo 191. A, b, c, d, e, f, g, h. Drops, variants. Some show remains of red pigment. i, j. Drops with undulating lines. See [Photo 185](#). A, b, d. k, l, m. Drops with punched decoration.

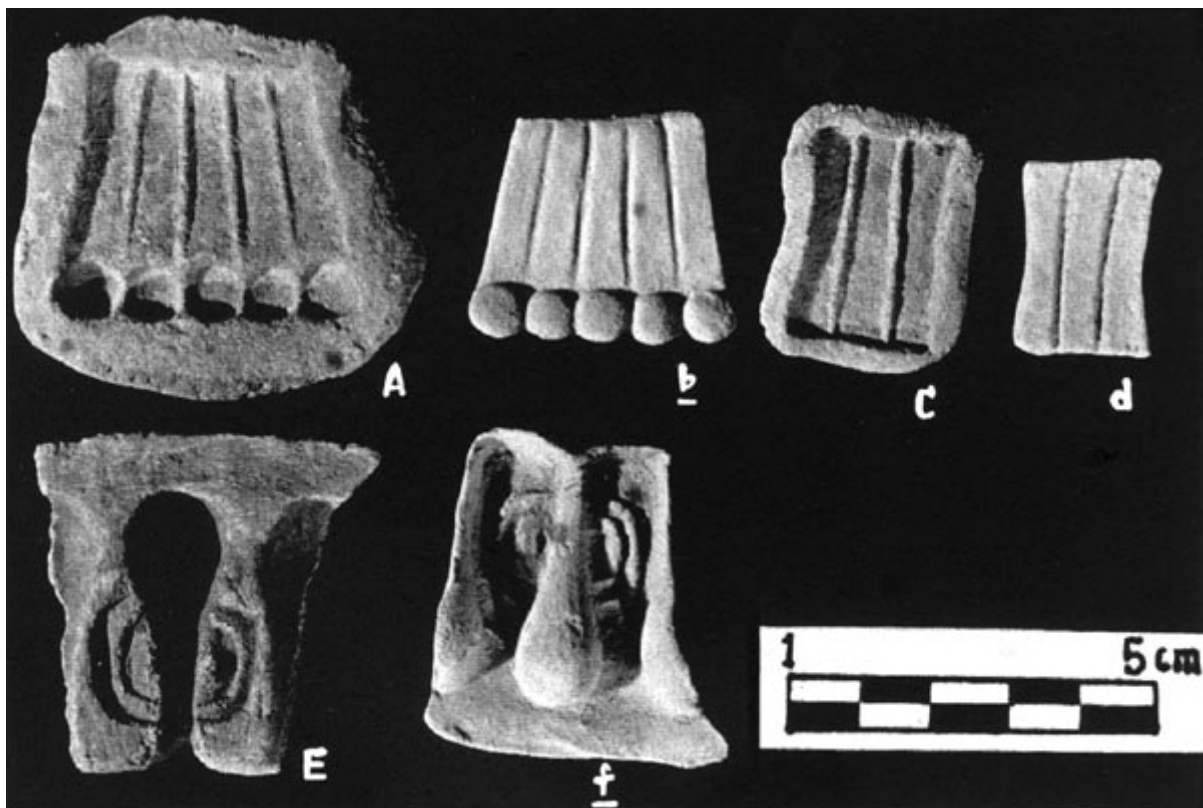


Photo 192. A, b. Object with bands and hemispheric rims. C, d. Object with three bands. E, f. Fragment decorated with drop and eye motifs.



Photo 193. a, b, c, d, e, f, g. Fragments of semicircular figures with pinched decoration, variants.



Photo 194. a, b, c, d, e, f, g, h. Appliqués with different motifs. Piece g resembles a small candlestick.



Photo 195. a. Serpentine object. See [Photo 60](#). b. b, c, e, f. Appliqués in different shapes. d. Curved object. See [Photo 150](#). e, f.



Photo 196. a, b. Features with volutes, fragments. c, d, e, f, g. Appliqué fragments.



Photo 197. A, b, C, d, e, f, g, h, i. Small objects in the shape of a disc with different motifs. i. Bird head motif. See [Photo 17](#). a, f, g.



Photo 198. A, b. Fragment with arrow and chimalli motif. See [Photo 138](#). E, f. c. Quincunx. See [Photo 181](#). f. d, e, f. Fragments of circular objects with different motifs. g, h, i. Plaque fragments with Chalchihuites motifs.



Photo 199. a, b, c, d, e, f. Plaque fragments with hemispherical decorations. G, h, l, j. Molds and small elongated figures. k, l, m, n, o, p, q, r, t, u, v, w. Hemispherical figures. s. Semi-hemispherical figure with central perforations. x, y. Motifs resembling Tlaloc eye rings.

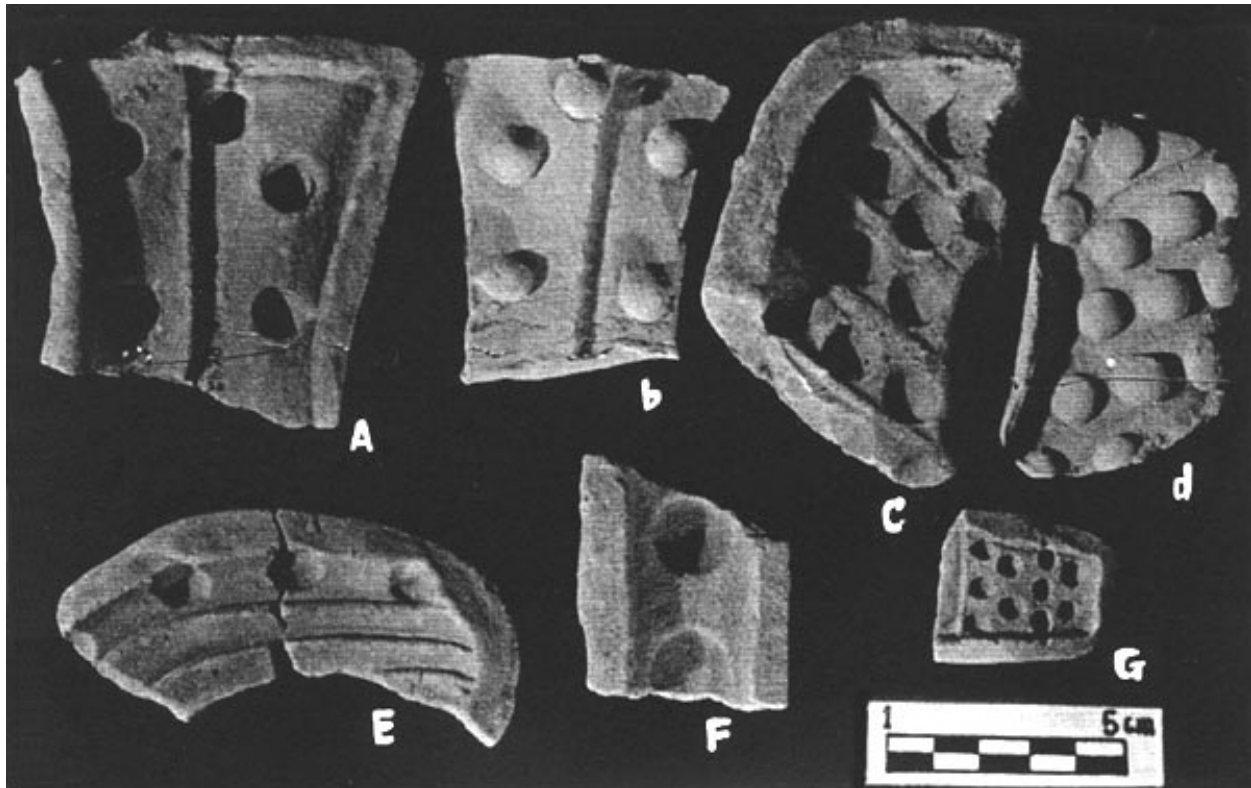


Photo 200. A, b, C, d, E, F, G. Different fragments with hemispherical decoration.

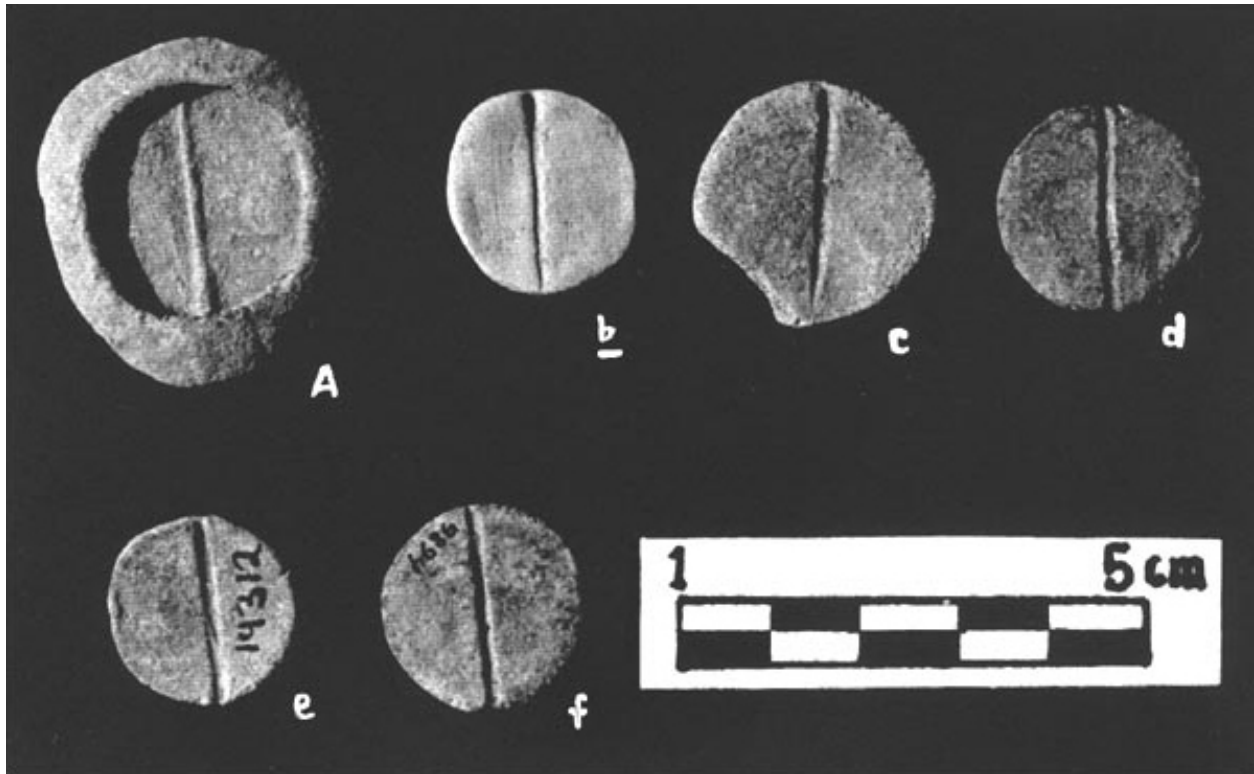


Photo 201. A, b, c, d, e, f. Small discs with central lines.

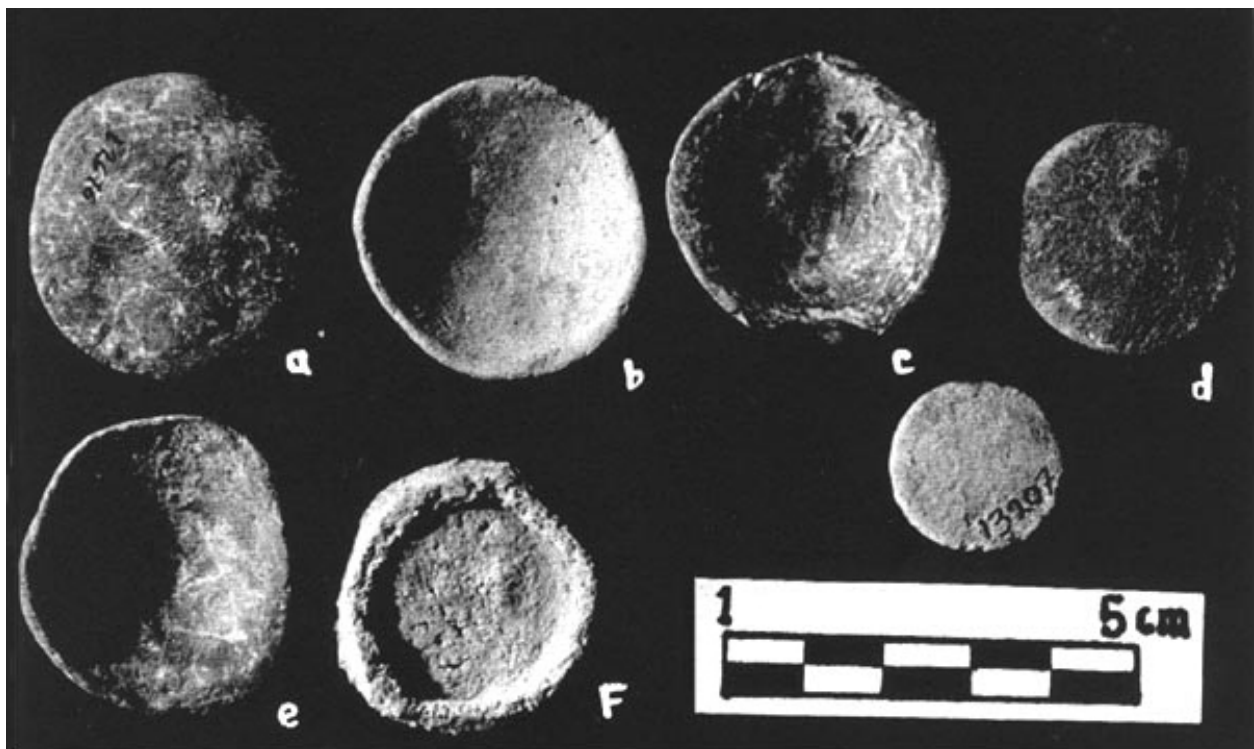


Photo 202. a, b, c, d, e. Small concave objects. F, g. Mold and reproduction in the shape of a disc.



Photo 203. a. Disc with radial lines. b, c, d, e, f, g, h, i. Small circular objects, some with perforations.

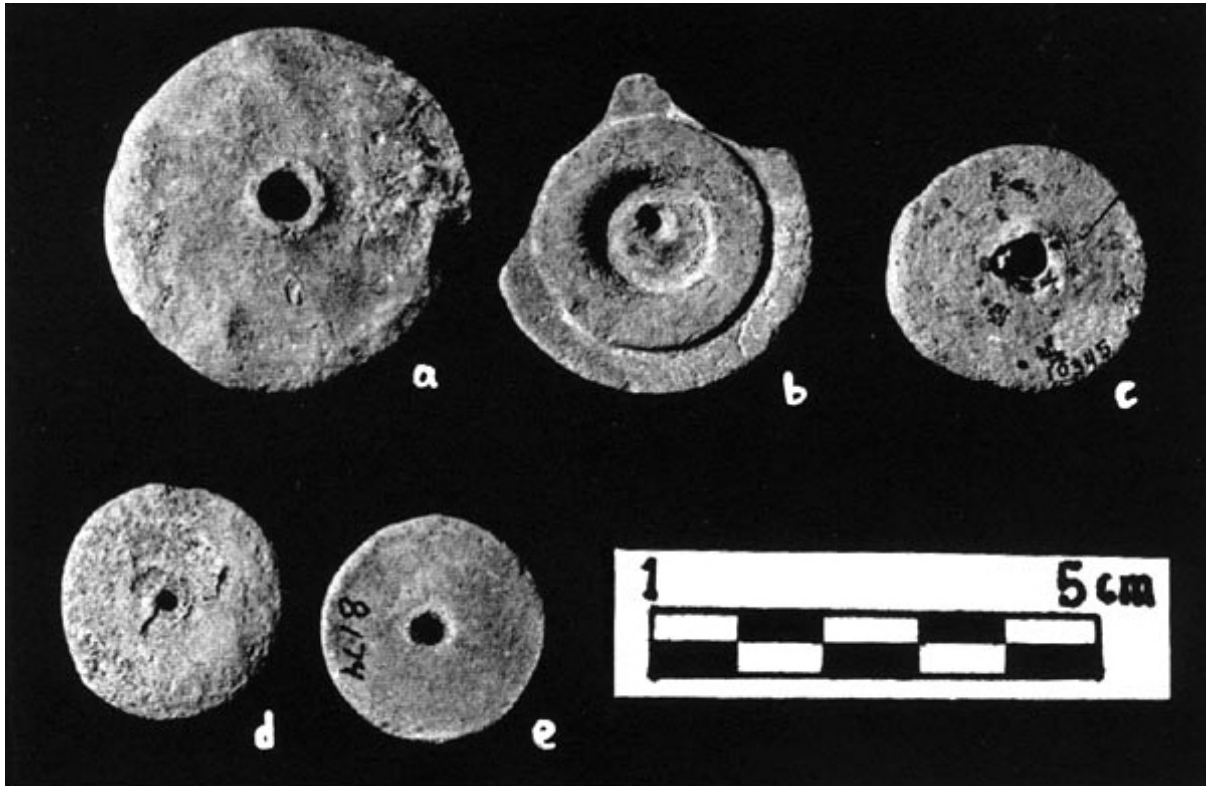


Photo 204. a, b, c, d, e. Discs with central perforation, possible wheels of little carts with figurines.



Photo 205. a, b, c. Word virgule with different represented motifs (fragment).



Photo 206. a, b, c, d, e, f. Appliqué fragments with different represented motifs.



Photo 207. A, b, C, d, E, f, g. Appliqué fragments with different represented motifs.