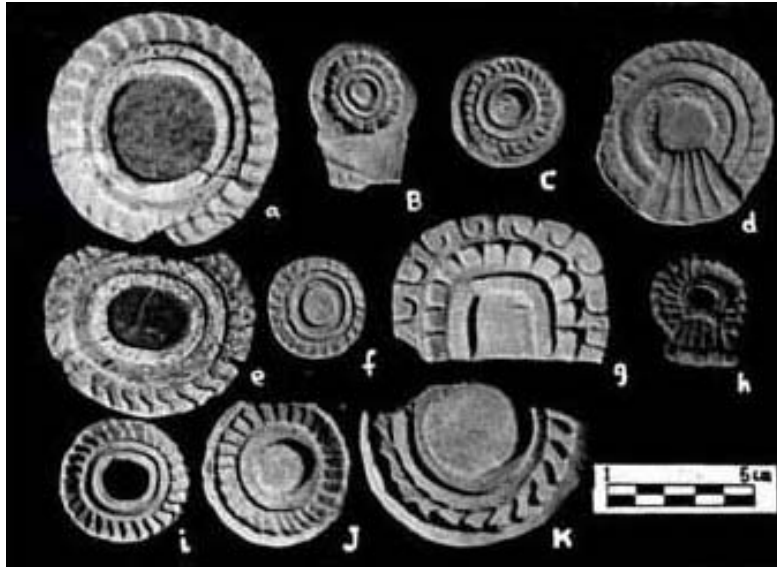


**FAMSI © 2002: Saburo Sugiyama**

## **Censer Symbolism and the State Polity in Teotihuacán**



**Research Year:** 1998

**Culture:** Teotihuacán

**Chronology:** Late Pre-Classic to Late Classic

**Location:** Highland México

**Site:** Teotihuacán

### **Table of Contents**

Introduction

Recording and Cataloging

Ritual Ceramics at a Workshop in the Ciudadela, Teotihuacán: Catalog

Presentation

Introduction

General Comments on Cataloging

Quantification Tables

Note on the Conventions Used for Captions

Catalog:

I. Phytomorphic: Realistic and Schematized Representations

II. Zoomorphic: Realistic and Schematized Representations

III. Anthropomorphic: Attributes of Deities and Characters

IV. Other Motifs: Different Representations and Symbols

V. Other Pieces: Censer Fragments and Molds

Bibliography

[Data Base for Theater-type Censers Found in Teotihuacán and Abroad #1](#)

"Adornos" and molds for censers from the "North Palace" in the Ciudadela,  
Teotihuacán Archaeological Project 1980-82, INAH

"Adornos" and molds for censers from Compound "Group 5" of the Sector  
N5W1,

Scholarship Program, INAH

"Adornos" and molds for censers from surface collection in Teotihuacán,  
Teotihuacán Mapping Project

"Adornos" and molds for censers from the Project of the Feathered Serpent  
Pyramid in 1988-89,

[Arizona State University and INAH](#)

Preliminary Comments

Sources Cited

**"Adornos" and molds for censers from the Project of the Feathered Serpent Pyramid in 1988-89.**

*Arizona State University and INAH.*

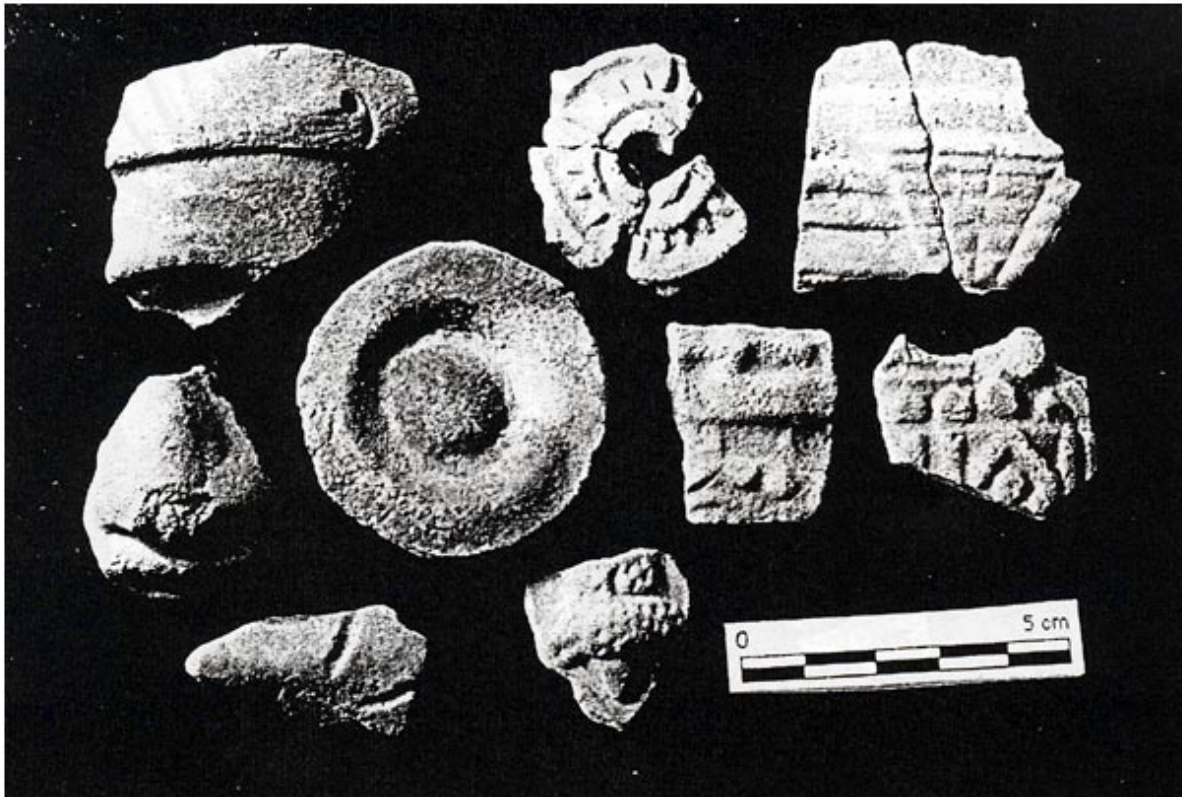


Figure PTQ 9A 1-5. Feathered Serpent Pyramid. 9A-1250.



Figure PTQ 9A 1-6. Feathered Serpent Pyramid. 9A-1250.



Figure PTQ 9A 1-7. Feathered Serpent Pyramid. 9A-1250.

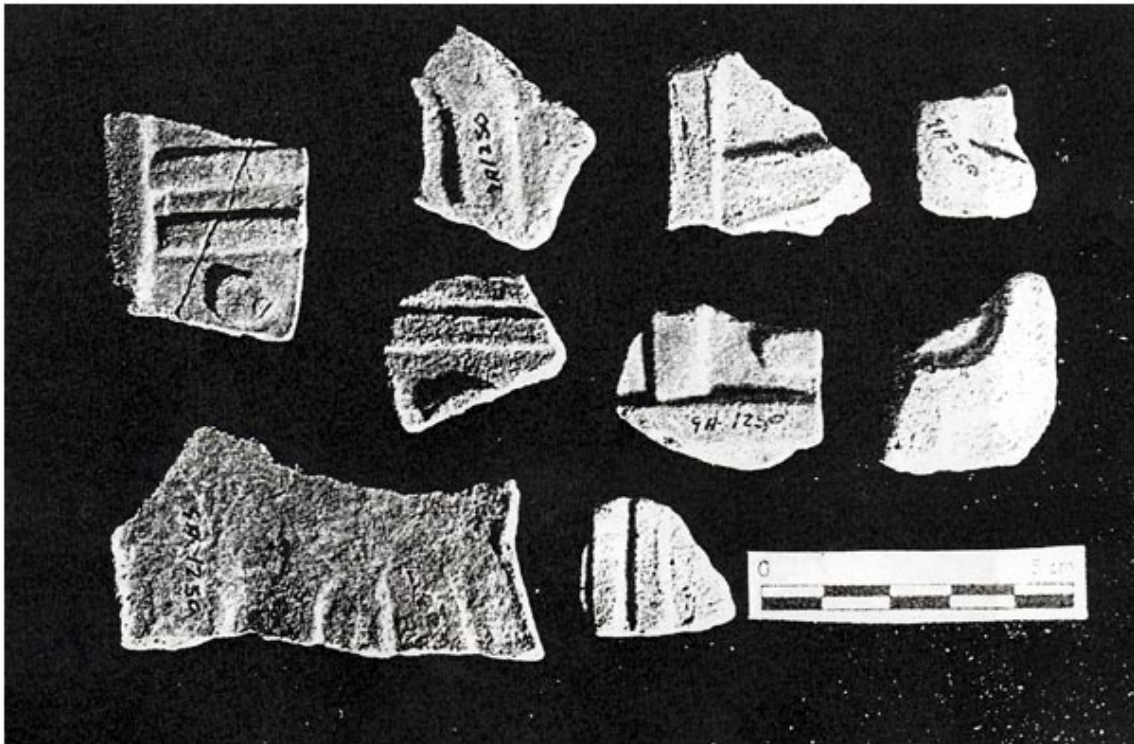


Figure PTQ 9A 1-8. Feathered Serpent Pyramid. 9A-1250.

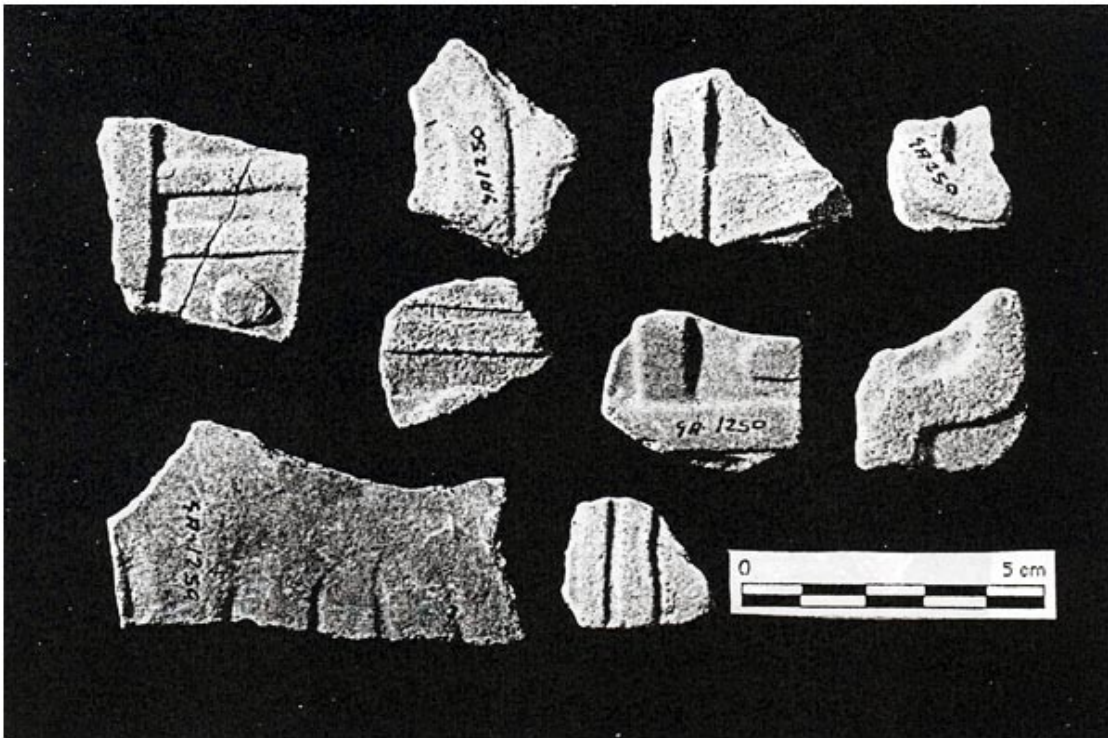


Figure PTQ 9A 1-9. Feathered Serpent Pyramid. 9A-1250.

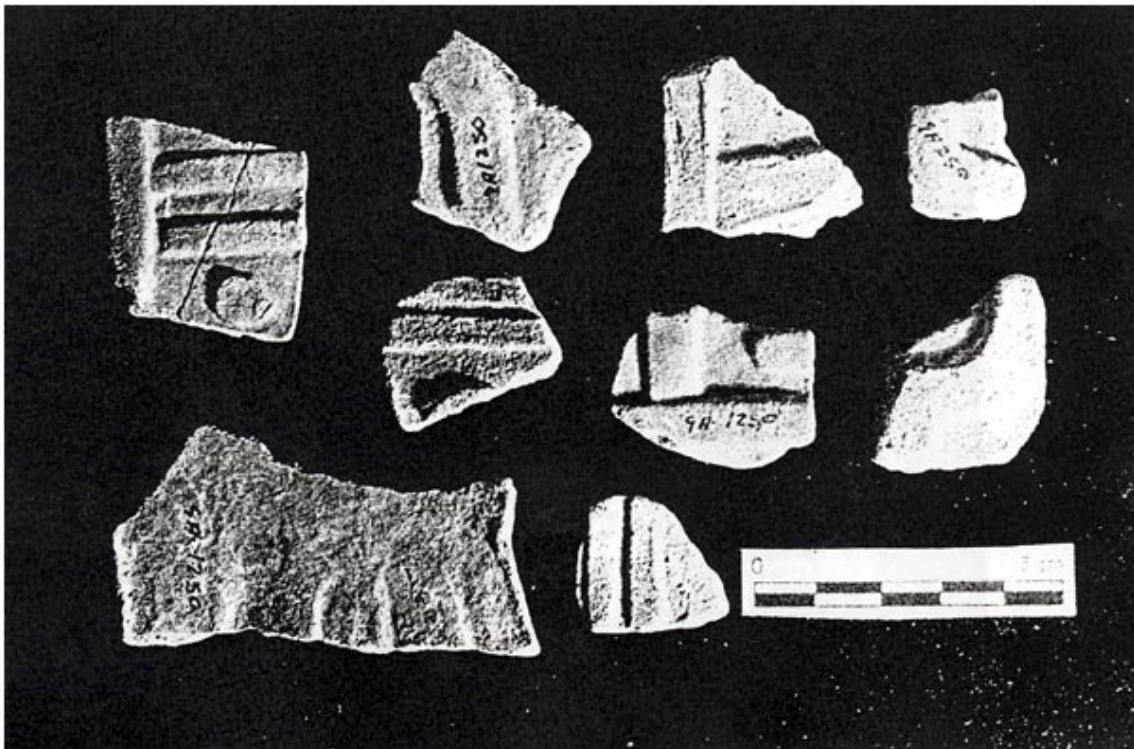


Figure PTQ 9A 1-10. Feathered Serpent Pyramid. 9A-1250.



Figure PTQ 9A 1-11. Feathered Serpent Pyramid.



Figure PTQ 9A 1-12. Feathered Serpent Pyramid.

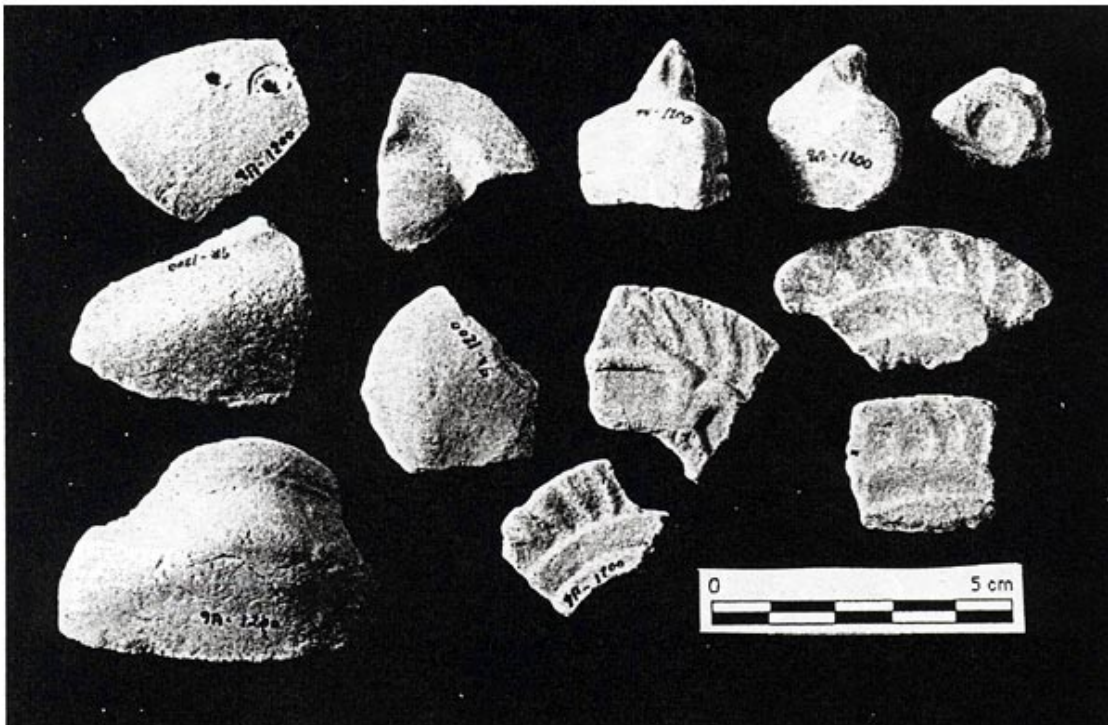


Figure PTQ 9A 1-13. Feathered Serpent Pyramid. 9A-1200.

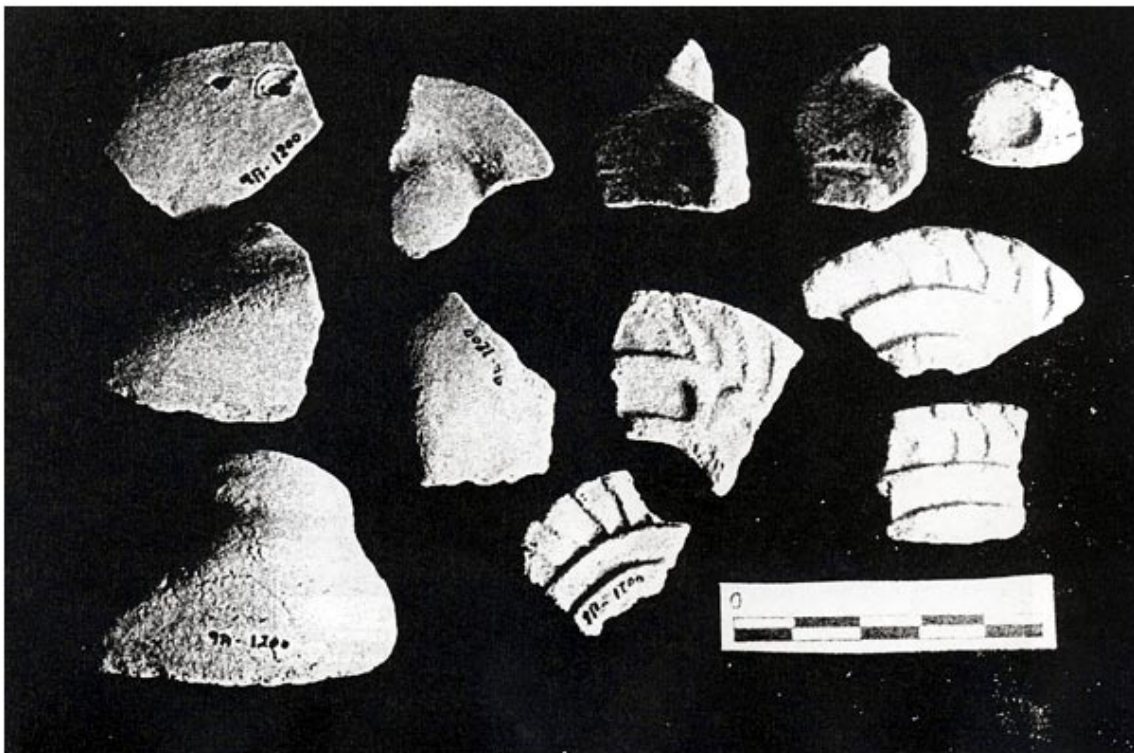


Figure PTQ 9A 1-14. Feathered Serpent Pyramid. 9A-1200.



Figure PTQ 9A 1-15. Feathered Serpent Pyramid. 9A-1200.





Figure PTQ 9A 1-16. Feathered Serpent Pyramid. 9A-1200.



Figure PTQ 9A 1-17. Feathered Serpent Pyramid. 9A-1219.



Figure PTQ 9A 1-18. Feathered Serpent Pyramid. 9A-1219.



Figure PTQ 9A 1-19. Feathered Serpent Pyramid. 9A-1189.



Figure PTQ 9A 1-20. Feathered Serpent Pyramid. A9-1189.



Figure PTQ 9A 1-21. Feathered Serpent Pyramid. 9A-602, 9A-1199, 9A-1199.



Figure PTQ 9A 1-22. Feathered Serpent Pyramid. 9A-602, 9A-1199, 9A-1199.



Figure PTQ 9A 1-23. Feathered Serpent Pyramid. 9A-149.



Figure PTQ 9A 1-24. Feathered Serpent Pyramid. 9A-149.



Figure PTQ 9A 1-25. Feathered Serpent Pyramid. 9A-201.

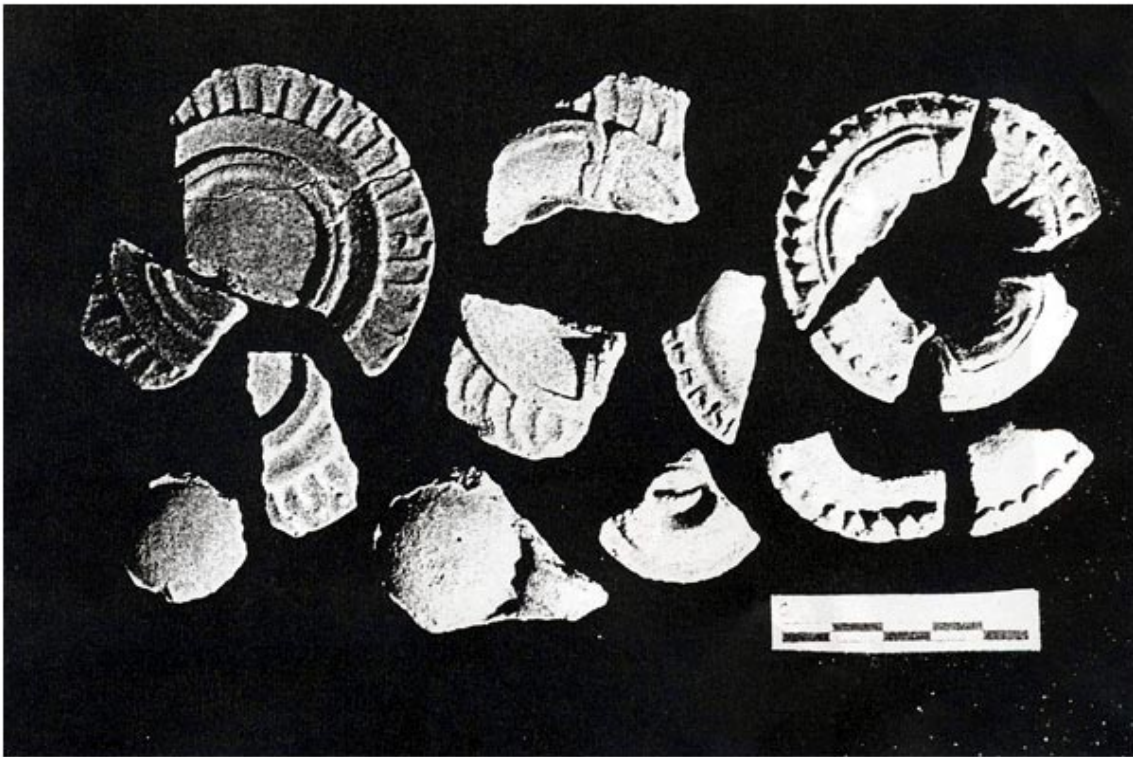


Figure PTQ 9A 1-26. Feathered Serpent Pyramid. 9A-201.



Figure PTQ 8A 3-0. Feathered Serpent Pyramid. A-201, 15 piezas.

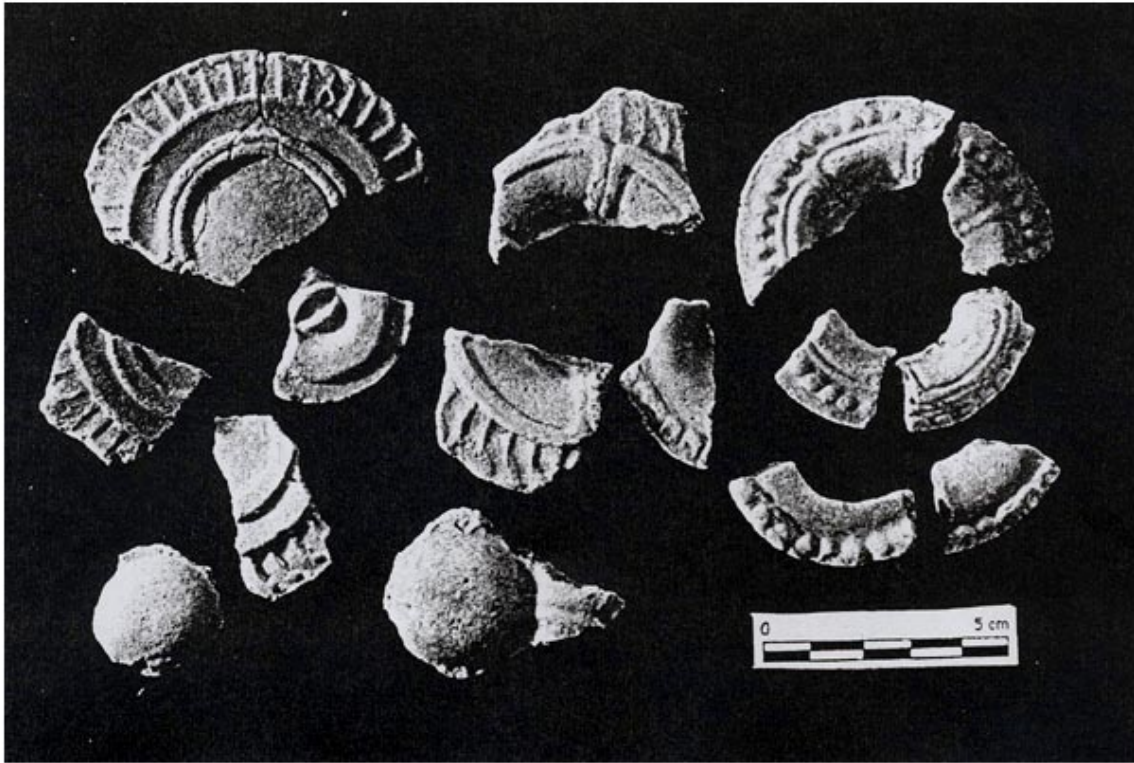


Figure PTQ 8A 3-1. Feathered Serpent Pyramid. A-201, 15 piezas.



Figure PTQ 8A 3-2. Feathered Serpent Pyramid. A-201, 15 piezas.

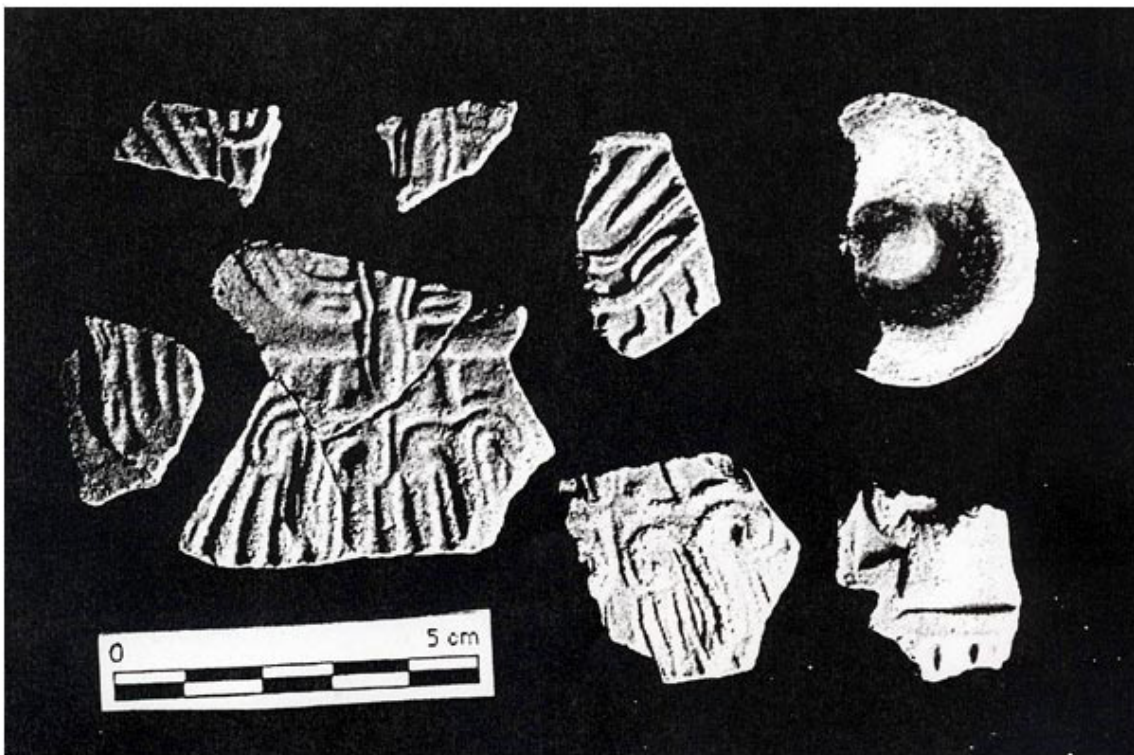


Figure PTQ 8A 3-3. Feathered Serpent Pyramid. A-201, 6 mariposas, 1 orejera y 1 "virgra".

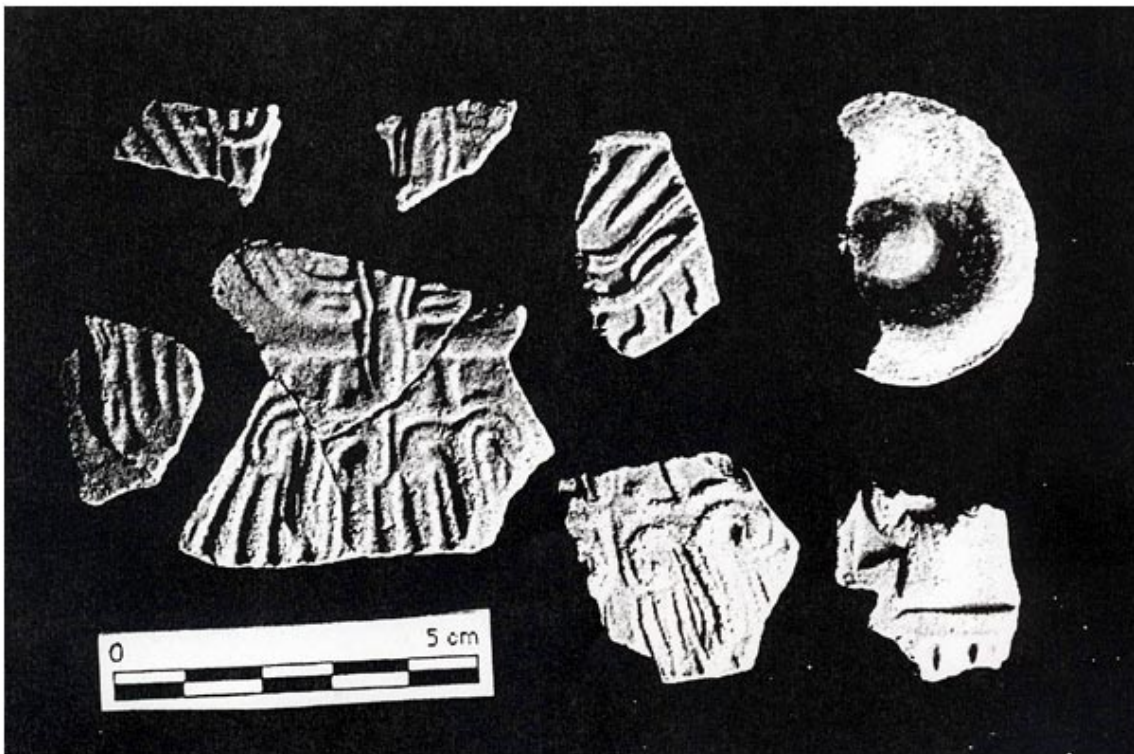


Figure PTQ 8A 3-4. Feathered Serpent Pyramid. A-201, 6 mariposas, 1 orejera y 1 "virgra".



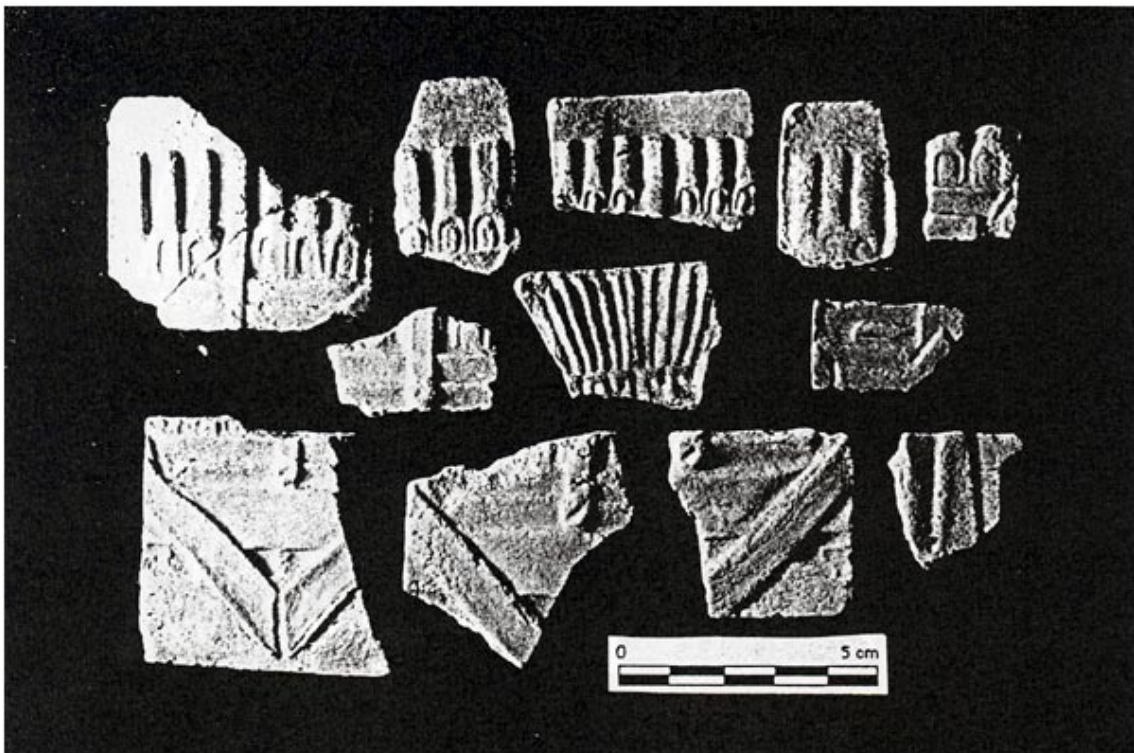


Figure PTQ 8A 3-5. Feathered Serpent Pyramid. A-201, 12 mantas.

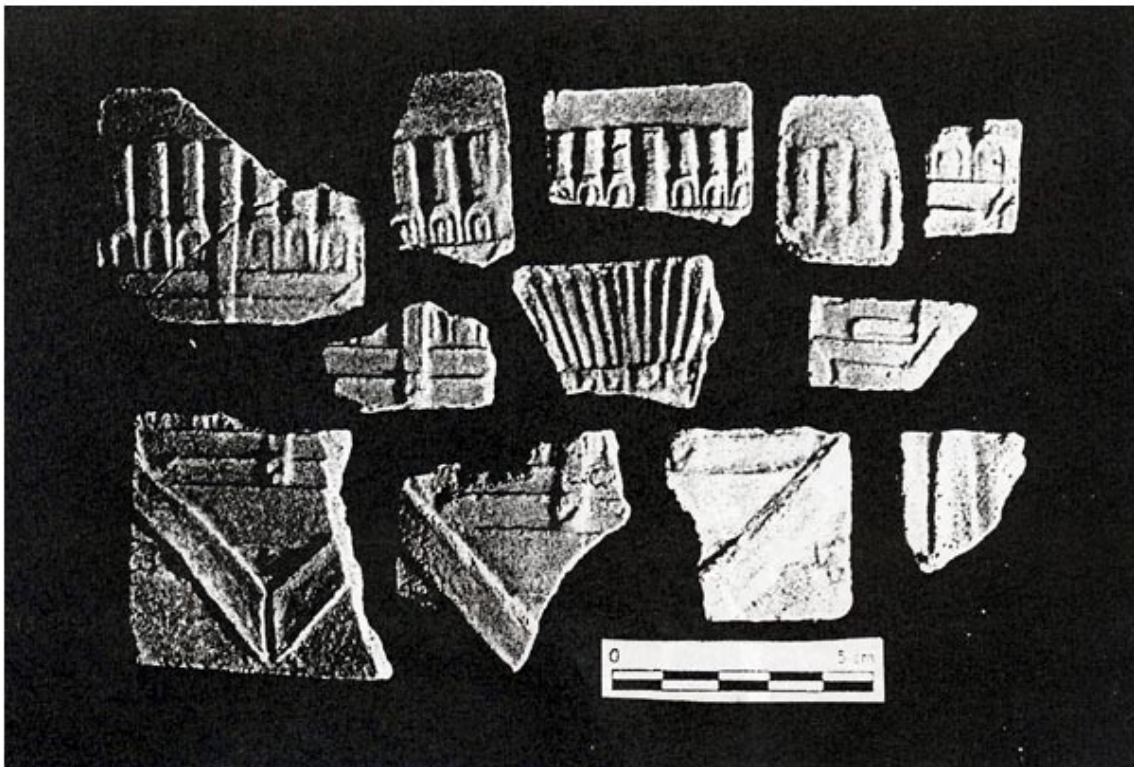


Figure PTQ 8A 3-6. Feathered Serpent Pyramid. A-201, 12 mantas.



Figure PTQ 8A 3-7. Feathered Serpent Pyramid. A-201, 2 placas laterales, 4 volutas.

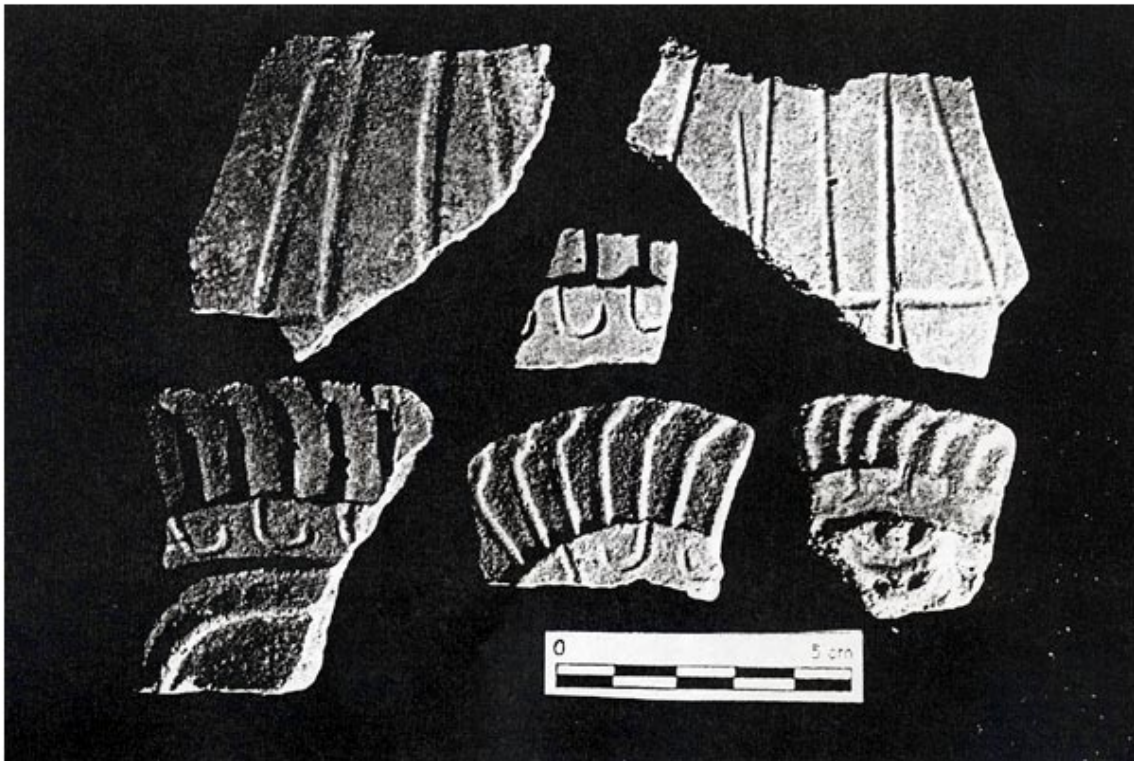


Figure PTQ 8A 3-8. Feathered Serpent Pyramid. A-201, 2 placas laterales, 4 volutas.

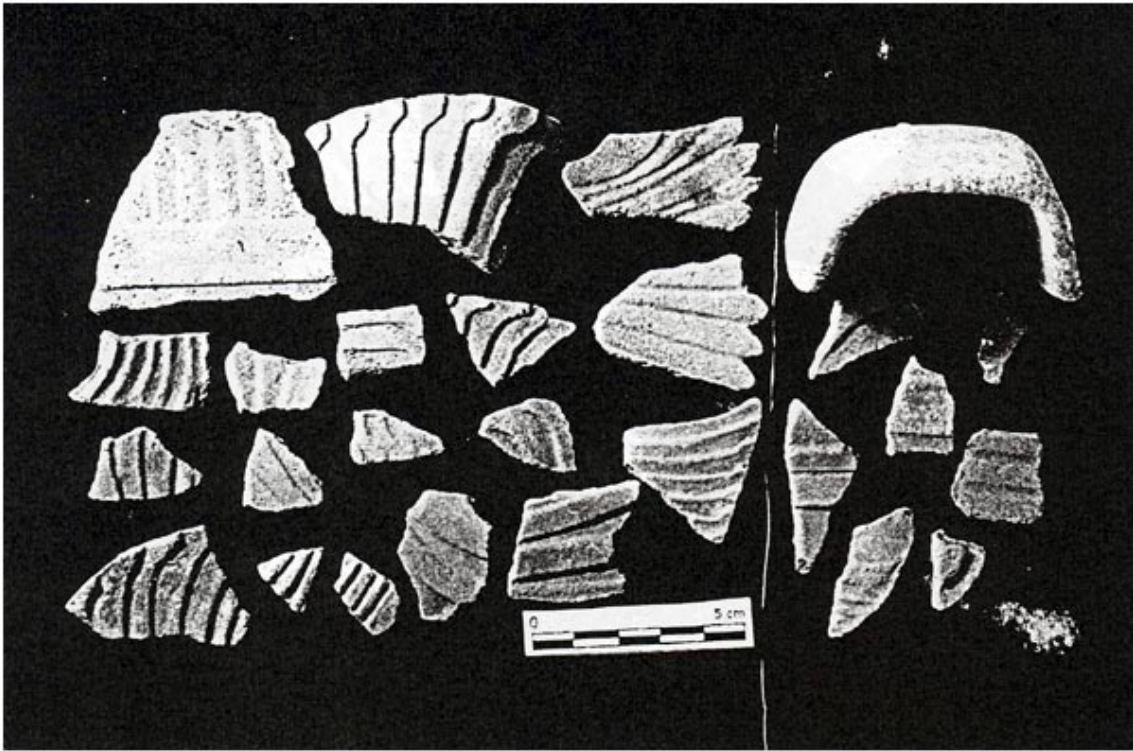


Figure PTQ 8A 3-9. Feathered Serpent Pyramid. A-201, 1 asa, 18 plumas, 7 no identificados.

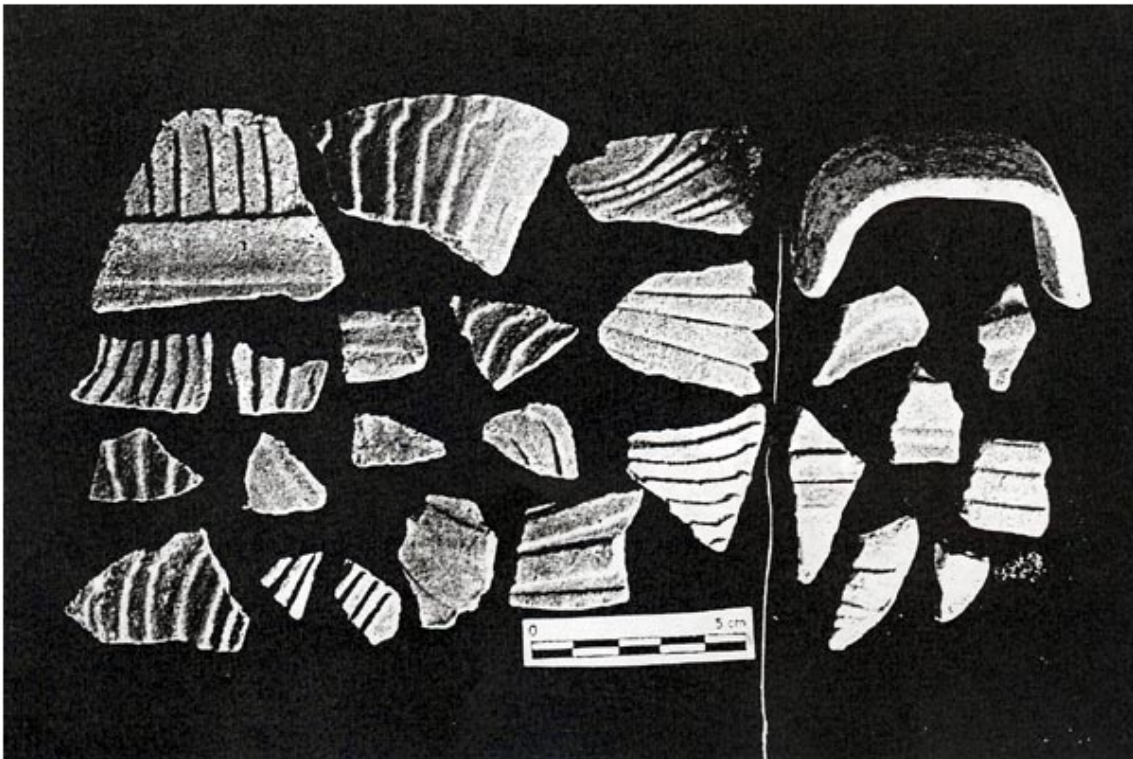


Figure PTQ 8A 3-10. Feathered Serpent Pyramid. A-201, 1 asa, 18 plumas, 7 no identificados.



Figure PTQ 8A 3-11. Feathered Serpent Pyramid. A-204, 1 máscara, 2 de 4 pétalos, 1 mariposa, 9 no identificados.

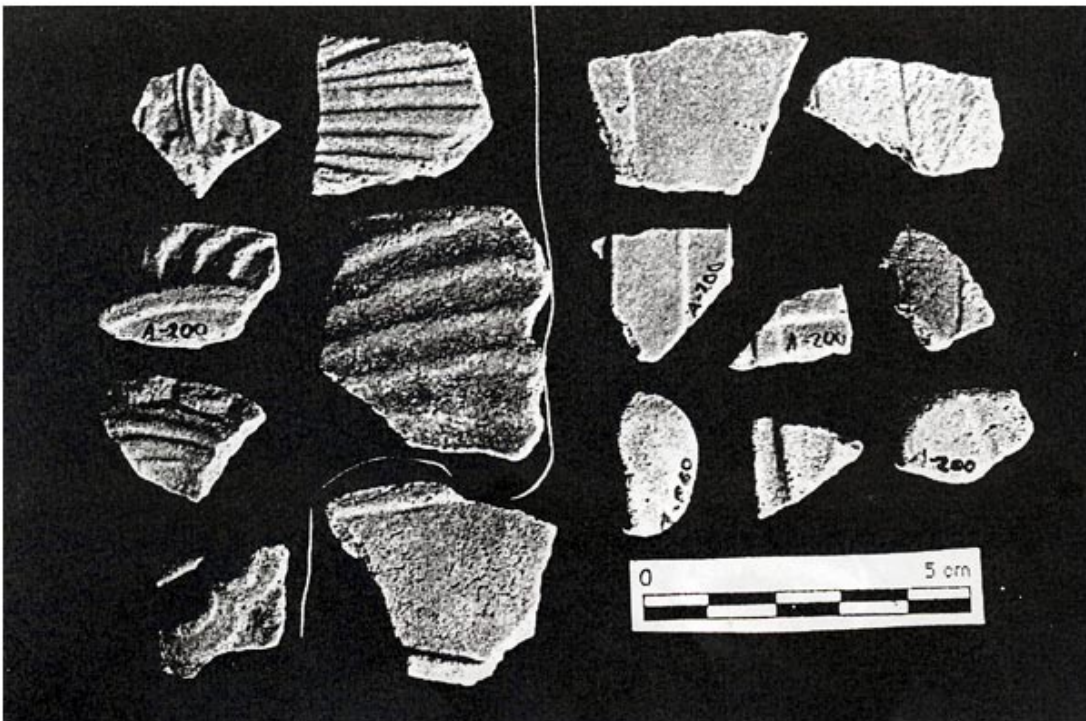


Figure PTQ 8A 3-12. Feathered Serpent Pyramid. A-204, 1 máscara, 2 de 4 pétalos, 1 mariposa, 9 no identificados.



A-200, 1 mariposa, 3 de 4 pétalos, 2 plumas y 1 no identificado.  
 Figure PTQ 8A 3-13. Feathered Serpent Pyramid.

8 no identificados.



A-200, 1 mariposa, 3 de 4 pétalos, 2 plumas y 1 no identificado.  
 Figure PTQ 8A 3-14. Feathered Serpent Pyramid.

8 no identificados.



Figure PTQ 9A 3-15. Feathered Serpent Pyramid. 9A-602, 2 plumas, 2 no identificados y 1 placa lateral.

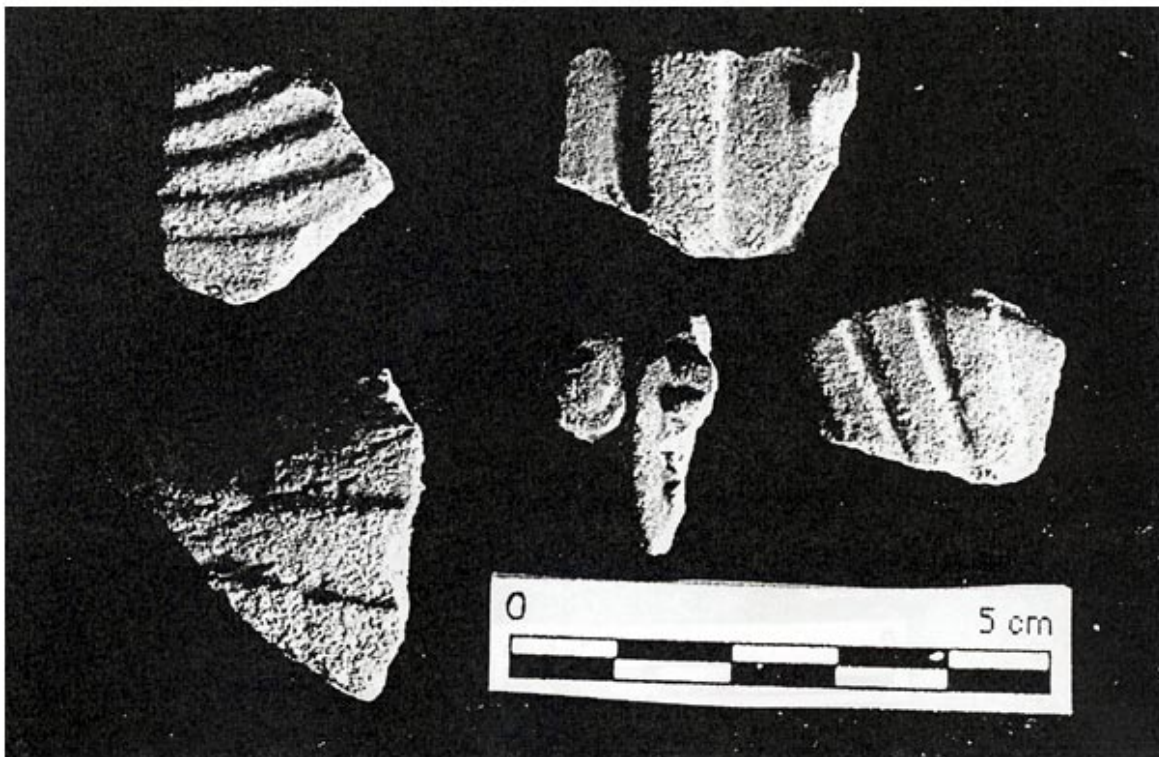


Figure PTQ 9A 3-16. Feathered Serpent Pyramid. 9A-602, 2 plumas, 2 no identificados y 1 placa lateral.



Figure PTQ 9A 3-17. Feathered Serpent Pyramid. 9A-1200, 3 de aves, 2 bordes, 2 flechas, 1 disco, 1 orejera, 1 no identificado.



Figure PTQ 9A 3-18. Feathered Serpent Pyramid. 9A-1200, 3 de aves, 2 bordes, 2 flechas, 1 disco, 1 orejera, 1 no identificado.



Figure PTQ 9A 3-19. Feathered Serpent Pyramid. 9A-1200, 10 plumas circulares, 4 máscaras, 2 volutas.



Figure PTQ 9A 3-20. Feathered Serpent Pyramid. 9A-1200, 10 plumas circulares, 4 máscaras, 2 volutas.



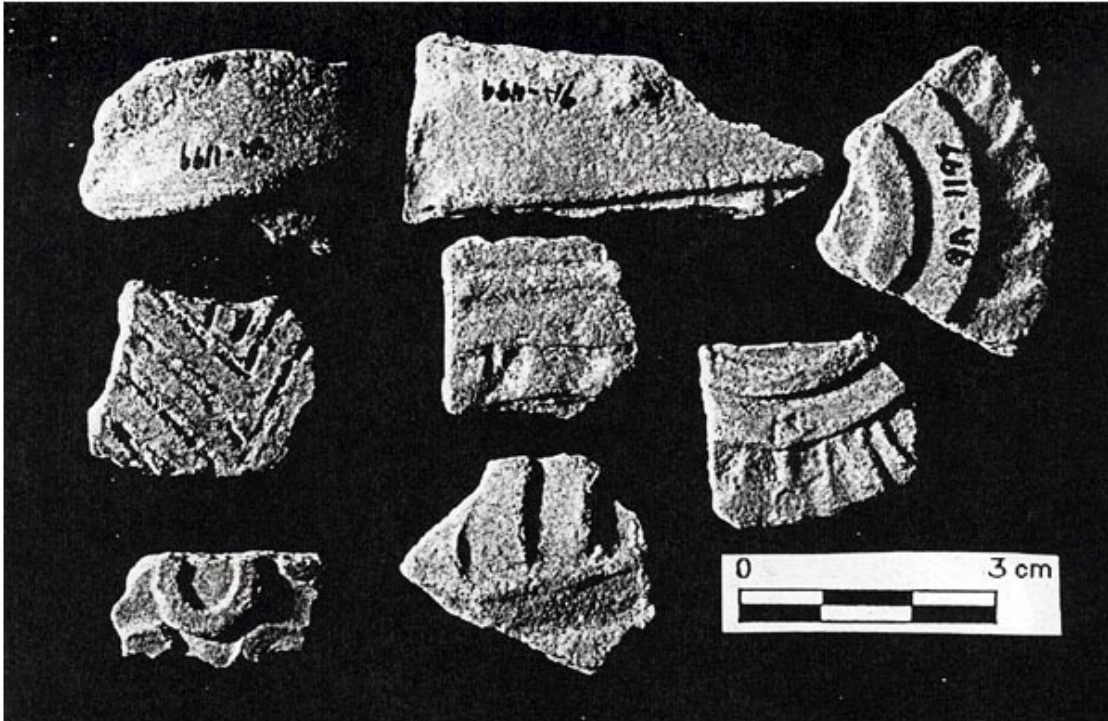


Figure PTQ 9A 3-21. Feathered Serpent Pyramid. 9A-1199, 1 pluma, 1 máscara, 1 placa lateral, 1 manta, 2 circulares con plumas, 1 diamante.

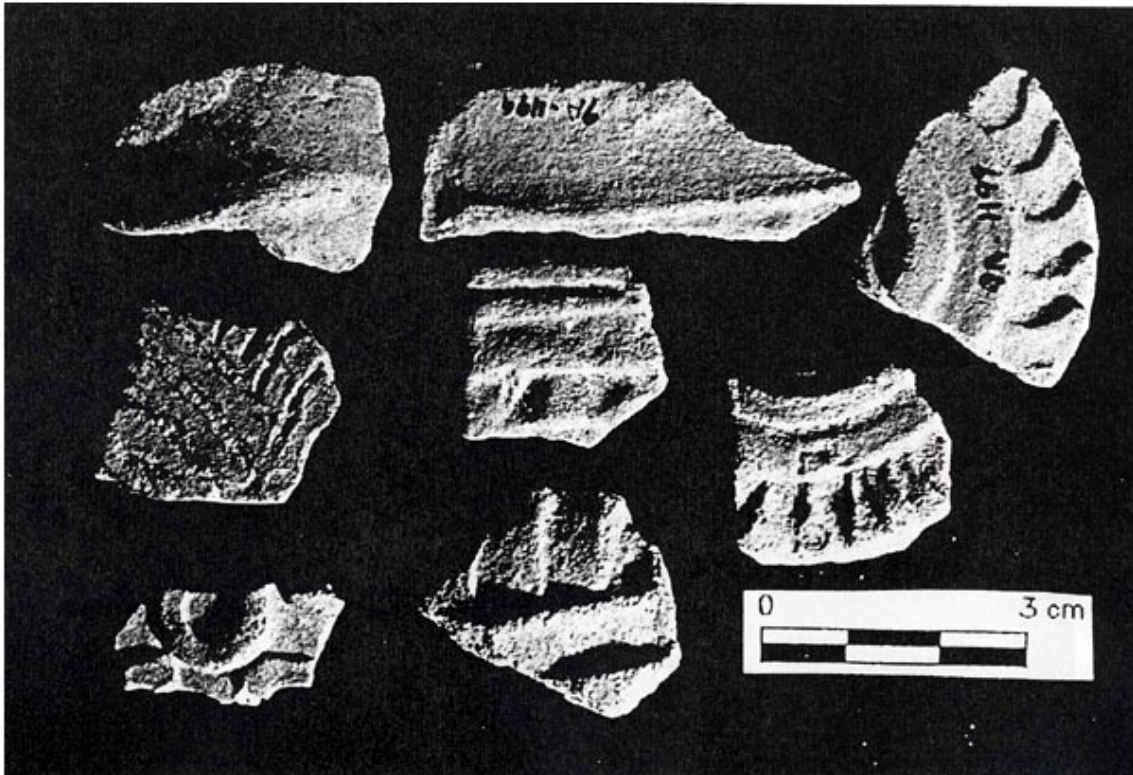


Figure PTQ 9A 3-22. Feathered Serpent Pyramid. 9A-1199, 1 pluma, 1 máscara, 1 placa lateral, 1 manta, 2 circulares con plumas, 1 diamante.



Figure PTQ 9A 3-23. Feathered Serpent Pyramid. 9A-1219, 3 mantas, 1 placa lateral, 2 objetos circulares y 3 plumas.



Figure PTQ 9A 3-24. Feathered Serpent Pyramid. 9A-1219, 3 mantas, 1 placa lateral, 2 objetos circulares y 3 plumas.



Figure PTQ 9A 3-25. Feathered Serpent Pyramid. 9A-140, 2 mantas, 1 orejera, 4 plumas, 1 voluta, 3 no identificados.



Figure PTQ 9A 3-26. Feathered Serpent Pyramid. 9A-140, 2 mantas, 1 orejera, 4 plumas, 1 voluta, 3 no identificados.



Figure PTQ 9A 3-27. Feathered Serpent Pyramid. 9A-1250, 3 máscaras, 5 orejeras, 2 discos, 2 algodones.



Figure PTQ 9A 3-28. Feathered Serpent Pyramid. 9A-1250, 3 máscaras, 5 orejeras, 2 discos, 2 algodones.



Figure PTQ 9A 3-29. Feathered Serpent Pyramid. 9A-1250, 8 mantas y 9 placas laterales.



Figure PTQ 9A 3-30. Feathered Serpent Pyramid. 9A-1250, 8 mantas y 9 placas laterales.

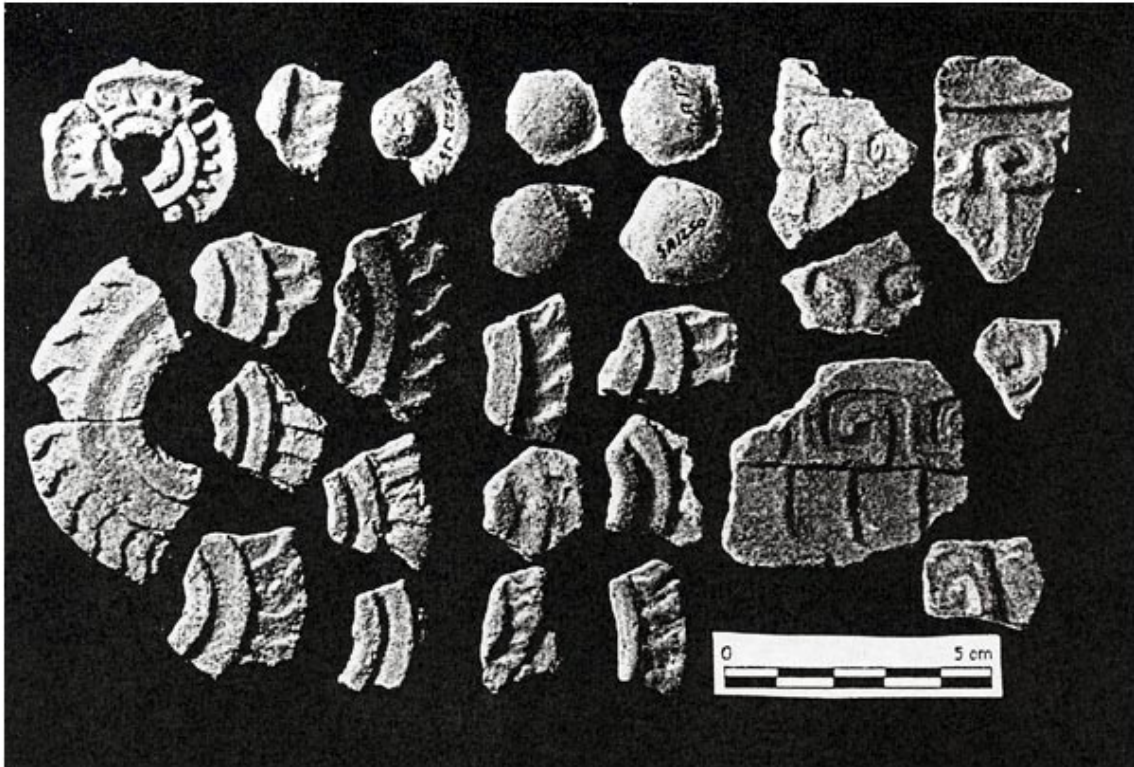


Figure PTQ 9A 3-31. Feathered Serpent Pyramid. 9A-1250, 6 volutas y 20 plumas circulares.

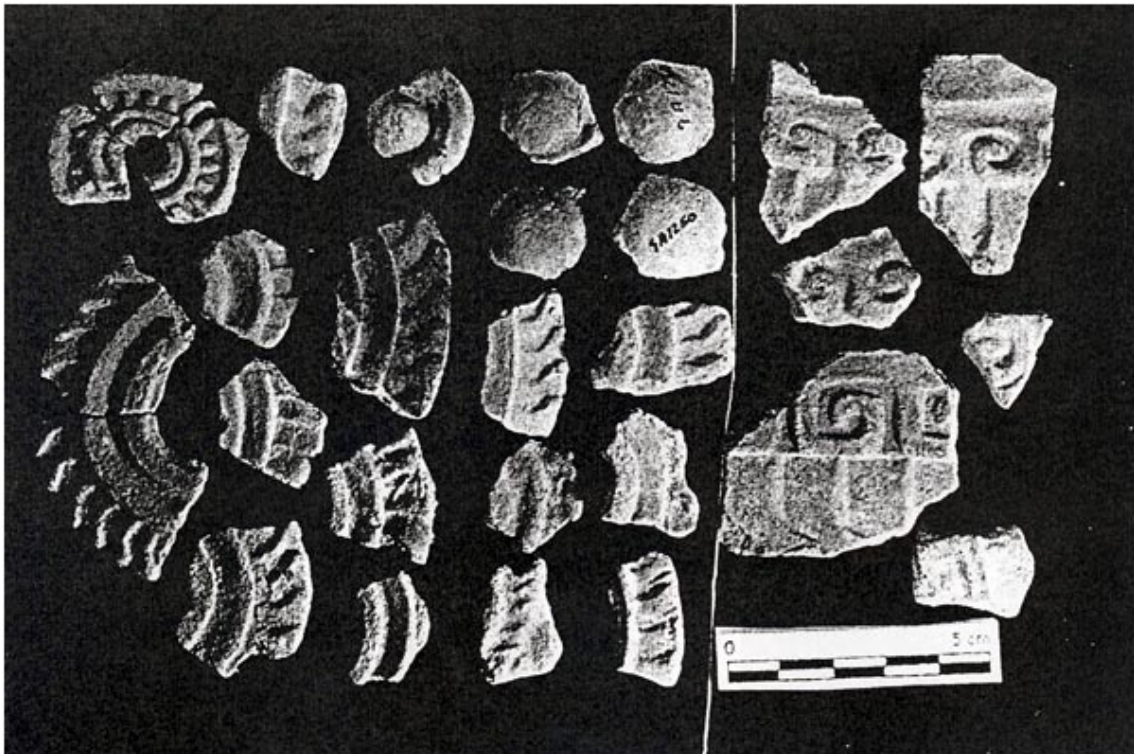


Figure PTQ 9A 3-32. Feathered Serpent Pyramid. 9A-1250, 6 volutas y 20 plumas circulares.



Figure PTQ 8A 3-33. Feathered Serpent Pyramid. A-137, 6 mantas y 3 mariposas.



Figure PTQ 8A 3-34. Feathered Serpent Pyramid. A-137, 6 mantas y 3 mariposas.

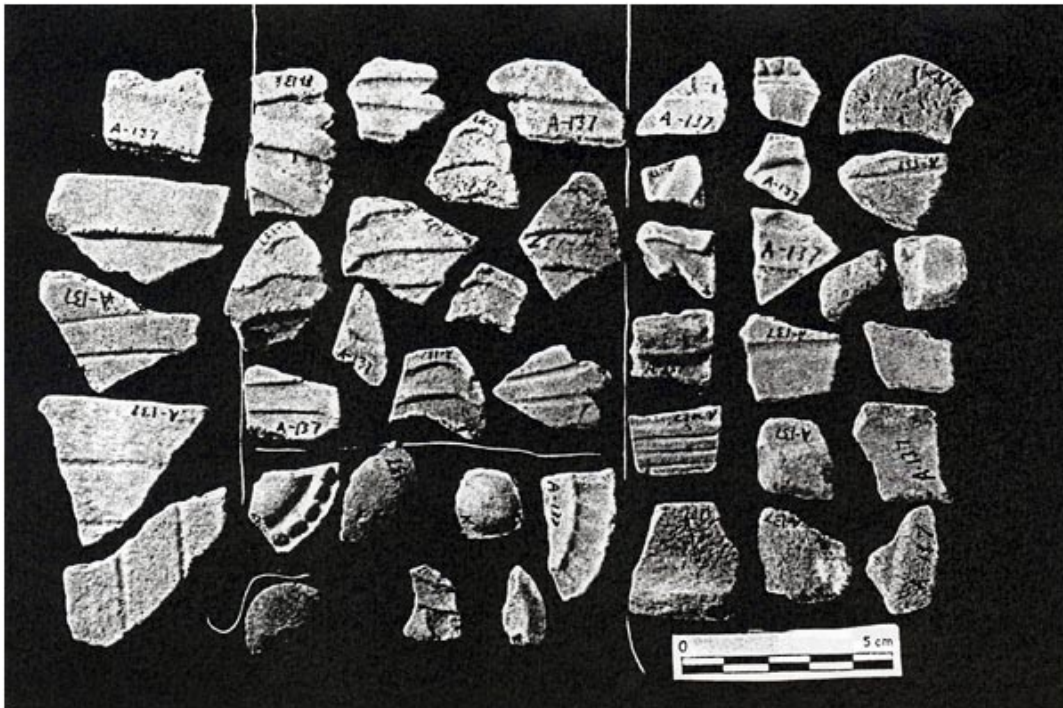


Figure PTQ 8A 3-35. Feathered Serpent Pyramid. A-137, 12 plumas, 1 orejera, 5 plumas circulares, 1 disco, 19 no identificados.

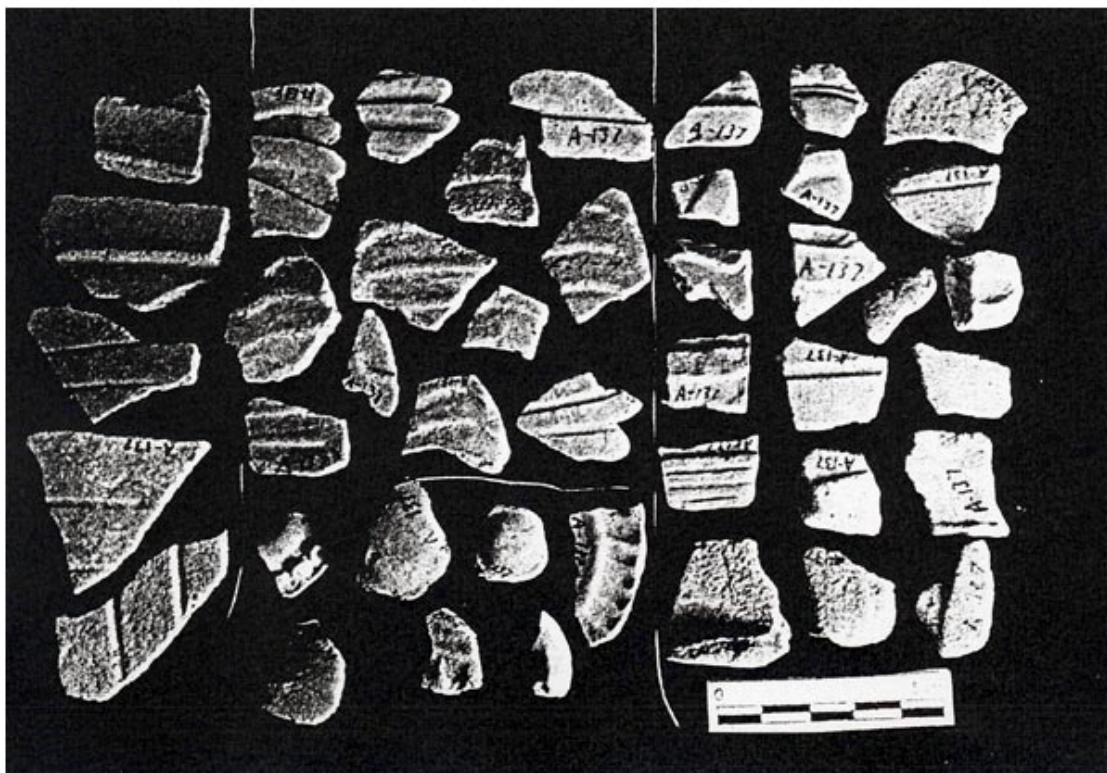


Figure PTQ 8A 3-36. Feathered Serpent Pyramid. A-137, 12 plumas, 1 orejera, 5 plumas circulares, 1 disco, 19 no identificados.





Figure PTQ 8A 3-37. Feathered Serpent Pyramid. 1 máscara, 4 placas laterales, 1 asa.

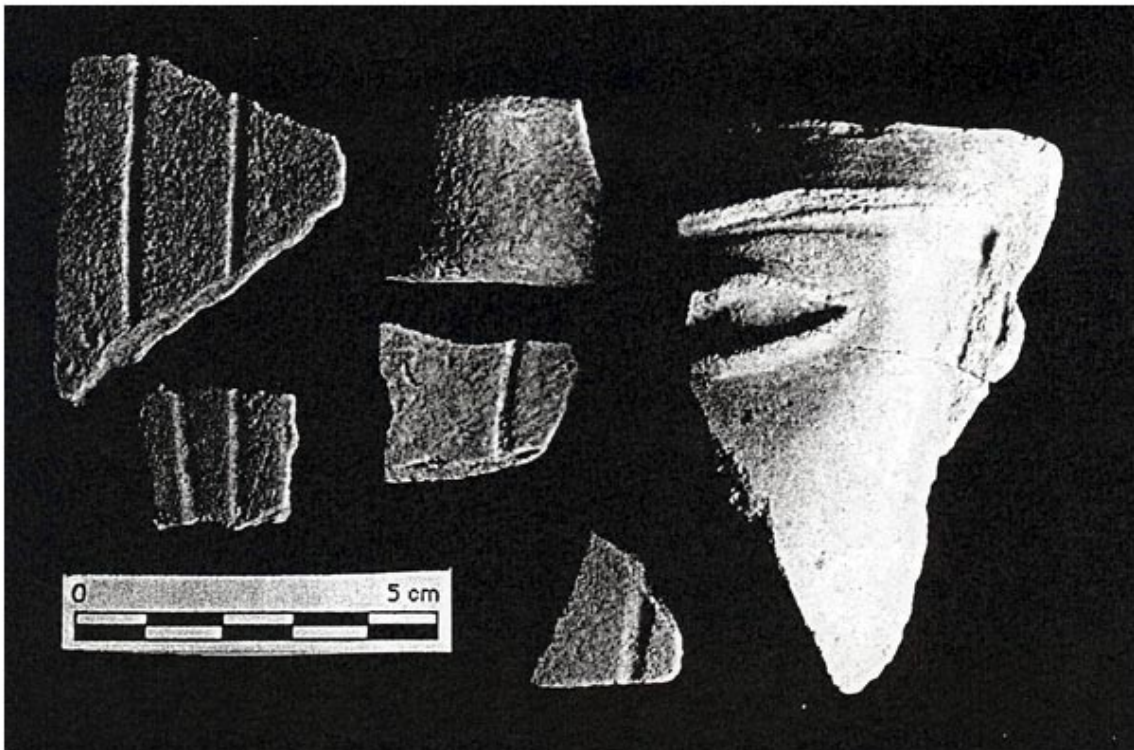


Figure PTQ 8A 4-0. Feathered Serpent Pyramid. A-516, Una máscara, cuatro placas laterales, una asa en forma "U".

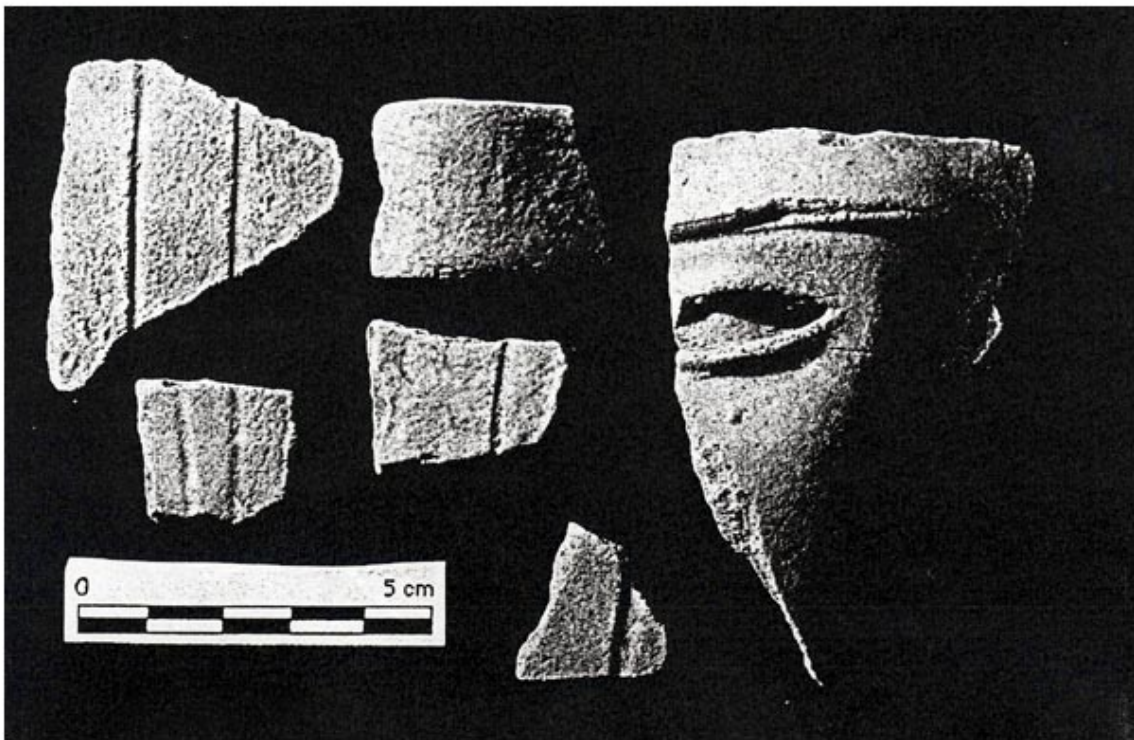


Figure PTQ 8A 4-1. Feathered Serpent Pyramid. A-516, Una máscara, cuatro placas laterales, una asa en forma "U".



Figure PTQ 8A 4-2. Feathered Serpent Pyramid.



Figure PTQ 8A 4-3. Feathered Serpent Pyramid.

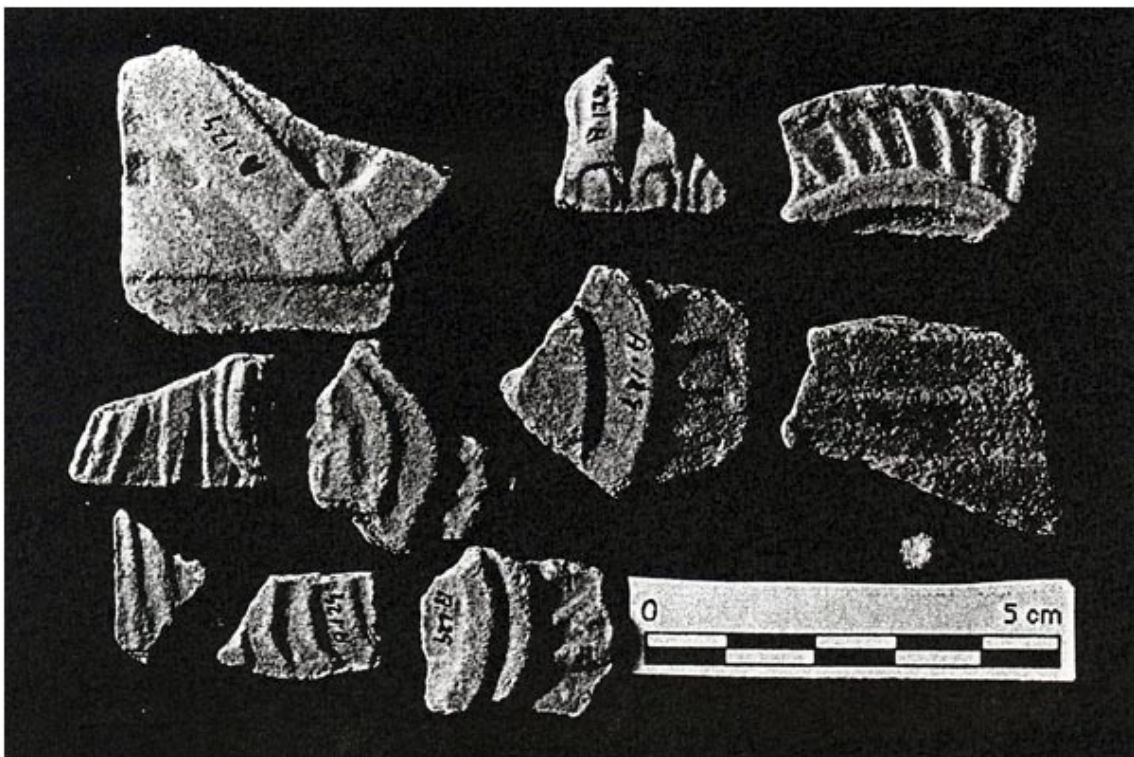


Figure PTQ 8A 4-4. Feathered Serpent Pyramid. A-129, 4 mariposas, 1 pluma y 3 plumas circulares.



Figure PTQ 8A 4-5. Feathered Serpent Pyramid. A-129, 4 mariposas, 1 pluma y 3 plumas circulares.



Figure PTQ 8A 4-6. Feathered Serpent Pyramid. A-132, 6 bases de incensarios, Tlamimilolpan.



Figure PTQ 8A 4-7. Feathered Serpent Pyramid. A-132, 1 mariposa, 4 mantas, 5 de 4 pétalos, 3 plumas, 2 N.I. 1 voluta.



Figure PTQ 8A 4-8. Feathered Serpent Pyramid. A-132, 1 mariposa, 4 mantas, 5 de 4 pétalos, 3 plumas, 2 N.I. 1 voluta.



Figure PTQ 8A 4-9. Feathered Serpent Pyramid. A-226, 3 mariposas, 3 circulares, 3 plumas.



Figure PTQ 8A 4-10. Feathered Serpent Pyramid. A-226, 3 mariposas, 3 circulares, 3 plumas.



Figure PTQ 8A 4-11. Feathered Serpent Pyramid. A-226, 4 placas laterales y 7 no identificados.



Figure PTQ 8A 4-12. Feathered Serpent Pyramid. A-134, 2 máscaras, 2 mariposas, 1 orejera, 1 manta, 1 punta de flecha, 1 algodón y 1 no identificado.



Figure PTQ 8A 4-13. Feathered Serpent Pyramid. A-134, 2 máscaras, 2 mariposas, 1 orejera, 1 manta, 1 punta de flecha, 1 algodón y 1 no identificado.



Figure PTQ 8A 4-14. Feathered Serpent Pyramid. A134, 5 de 4 pétalos, 6 plumas, y 3 no identificados.





Figure PTQ 8A 4-15. Feathered Serpent Pyramid. A134, 5 de 4 pétalos, 6 plumas, y 3 no identificados.



Figure PTQ 8A 4-16. Feathered Serpent Pyramid. A-134, 8 plumas y 2 placas laterales.



Figure PTQ 8A 4-17. Feathered Serpent Pyramid. A-134, 8 plumas y 2 placas laterales.



Figure PTQ 8A 4-18. Feathered Serpent Pyramid. A-535, 4 mantas, 6 plumas, 4 no identificados.



Figure PTQ 8A 4-19. Feathered Serpent Pyramid. A-535, 4 mantas, 6 plumas, 4 no identificados.



Figure PTQ 8A 4-20. Feathered Serpent Pyramid. A-230, 2 mantas, 2 orejeras, 2 mariposas, 2 no identificados.



Figure PTQ 8A 4-21. Feathered Serpent Pyramid. A-230, 2 mantas, 2 orejeras, 2 mariposas, 2 no identificados.



Figure PTQ 8A 4-22. Feathered Serpent Pyramid. A-230 y A-189, 2 piezas base de incensario Tiamimilolpan.



Figure PTQ 8A 4-23. Feathered Serpent Pyramid. A-189, 7 de 4 pétalos y 1 de mariposa.



Figure PTQ 8A 4-24. Feathered Serpent Pyramid. A-189, 7 de 4 pétalos y 1 de mariposa.



Figure PTQ 8A 4-25. Feathered Serpent Pyramid. A-224, 1 pluma, 1 manta, 1 de 4 pétalos, 4 no identificados.



Figure PTQ 8A 4-26. Feathered Serpent Pyramid. A-228, 4 plumas, 2 mantas, 3 de 4 pétalos y 4 no identificado.



Figure PTQ 8A 4-27. Feathered Serpent Pyramid. A-277, 2 frag. de incensario, brasero Tlamimilolpan.



Figure PTQ 8A 4-28. Feathered Serpent Pyramid. A-277, 1 ave, 1 orejera, 3 mantas, 3 de 4 pétalos.



Figure PTQ 8A 4-29. Feathered Serpent Pyramid. A-277, 1 ave, 1 orejera, 3 mantas, 3 de 4 pétalos.



Figure PTQ 8A 4-30. Feathered Serpent Pyramid. A-277, 1 mariposa, 4 plumas y 3 no identificado.





Figure PTQ 8A 4-31. Feathered Serpent Pyramid. A-143, 1 manta, 1 mariposa, 1 voluta, 1 de 4 pétalos.



Figure PTQ 8A 5-2. Feathered Serpent Pyramid. A-124, A546, 2 N.I. Uno de 4 pétalos, uno no identificado.



Figure PTQ 8A 5-3. Feathered Serpent Pyramid. A-124, A546, 2 N.I. Uno de 4 pétalos, uno no identificado.



A-123, 1 manta, 1 de 4 pétalos, 2 plumas, 3 N.I.

A-121, 1 mariposa, 3 plumas.

Figure PTQ 8A 5-4. Feathered Serpent Pyramid.



Figure PTQ 8A 5-5. Feathered Serpent Pyramid. A-209, 2 plumas circulares, 2 mantas, 1 pluma, 1 N.I.



Figure PTQ 8A 5-6. Feathered Serpent Pyramid. A-209, 2 plumas circulares, 2 mantas, 1 pluma, 1 N.I.



Figure PTQ 8A 5-7. Feathered Serpent Pyramid. A-158, 1 flecha, 3 plumas, 1 mariposa.



Figure PTQ 8A 5-8. Feathered Serpent Pyramid. A-220, 1 atado, 3 mantas, 2 mariposas, 1 agua, 4 círculos con plumas y 3 N.I.



Figure PTQ 8A 5-9. Feathered Serpent Pyramid. A-220, 1 atado, 3 mantas, 2 mariposas, 1 agua, 4 círculos con plumas y 3 N.I.



A526, 2 placas, 1 flor de 4 pétalos y 1 N.I.

A267, 3 placas laterales y 2 N.I.

Figure PTQ 8A 5-10. Feathered Serpent Pyramid.



A-375, 1 ave, 1 pluma y 1 N.I.

A-213, 1 pluma.

Figure PTQ 8A 5-11. Feathered Serpent Pyramid.



A-599, 1 placa lateral y 3 N.I.

A-542, 2 plumas y N.I.

A-467, 1 máscara, 1 mariposa, 1 pluma circular y 1 pluma.

Figure PTQ 8A 5-12. Feathered Serpent Pyramid.



A-599, 1 placa lateral y 3 N.I.

A-542, 2 plumas y N.I.

A-467, 1 máscara, 1 mariposa, 1 pluma circular y 1 pluma.

Figure PTQ 8A 5-13. Feathered Serpent Pyramid.



Figure PTQ 8A 5-14. Feathered Serpent Pyramid. A-216, 1 mariposa, 1 manta, 2 placas laterales, 3 N.I.



A-279, 3 mariposas, 1 de 4 pétalos, 1 N.I.

A-581, 1 orejera, 1 de 4 pétalos y 1 N.I.

Figure PTQ 8A 5-15. Feathered Serpent Pyramid.



A-279, 3 mariposas, 1 de 4 pétalos, 1 N.I.

A-581, 1 orejera, 1 de 4 pétalos y 1 N.I.

Figure PTQ 8A 5-16. Feathered Serpent Pyramid.

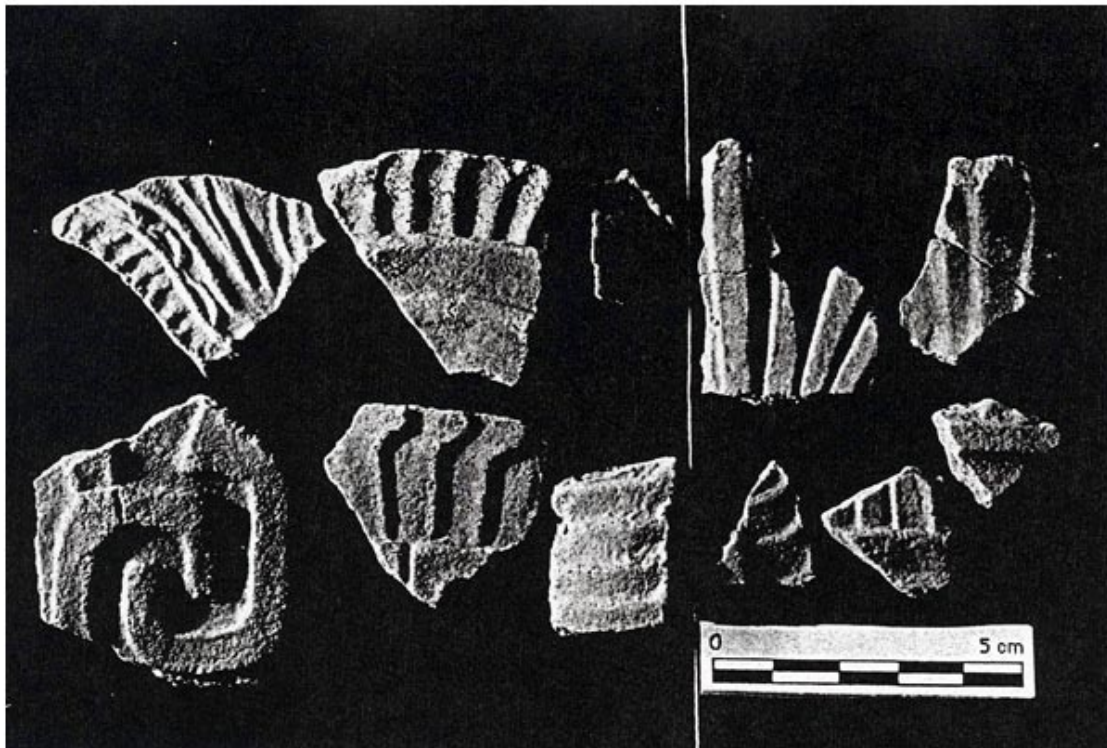




A-637, 1 manta, 1 de 4 pétalos, 2 N.I.

A-578, 6 N.I.

Figure PTQ 8A 5-17. Feathered Serpent Pyramid.



A-269, 1 mariposa, 3 plumas, 1 flor, 1 placa lateral.

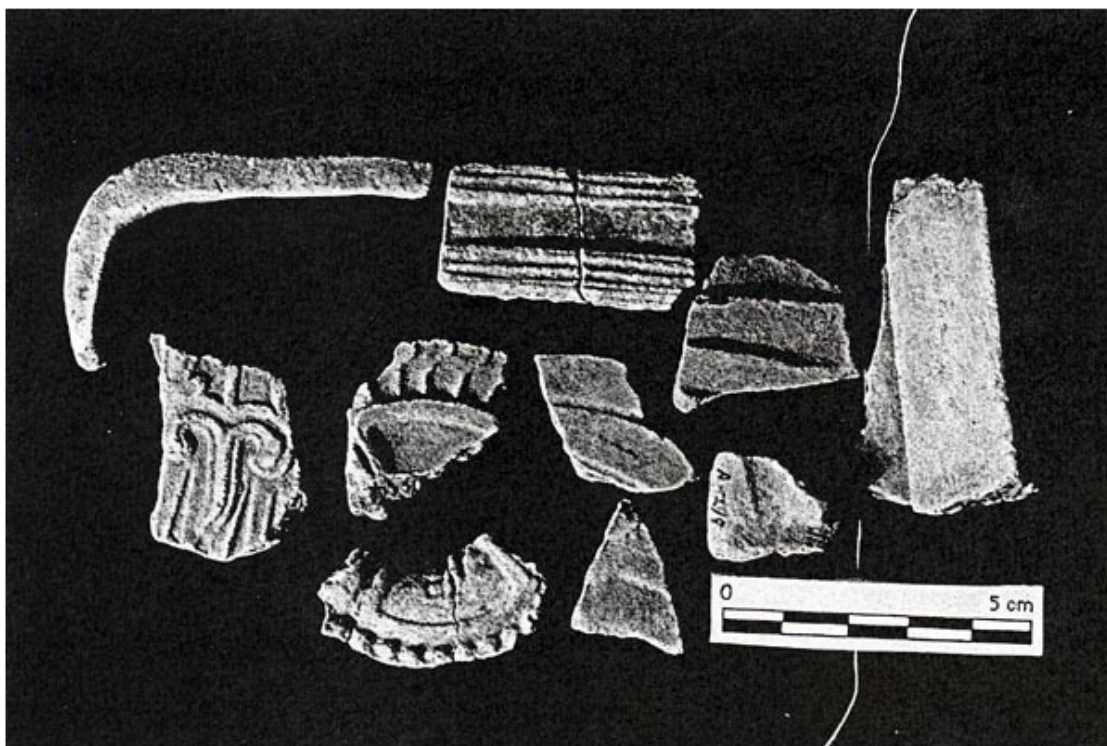
A-524, 3 plumas y 2 N.I.

Figure PTQ 8A 5-18. Feathered Serpent Pyramid.



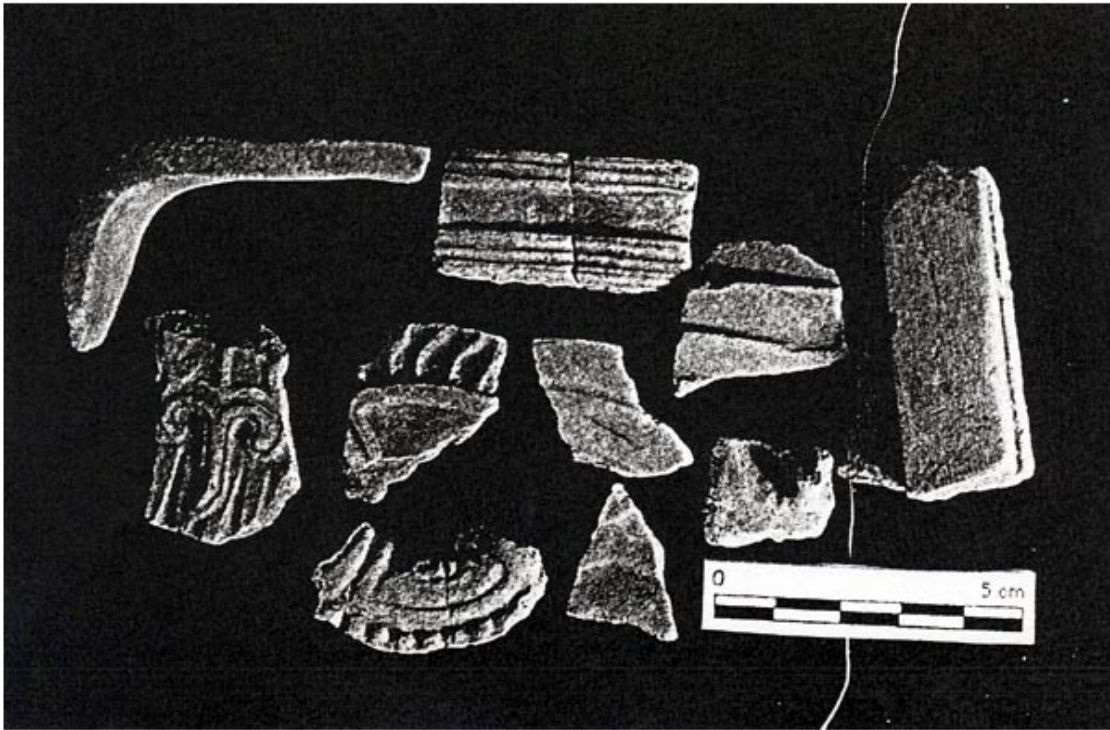
A-269, 1 mariposa, 3 plumas, 1 flor, 1 placa lateral.  
Figure PTQ 8A 5-19. Feathered Serpent Pyramid.

A-524, 3 plumas y 2 N.I.



A-219, 1 asa, 1 mariposa, 2 de 4 pétalos, 3 plumas, 2 N.I.  
Figure PTQ 8A 5-20. Feathered Serpent Pyramid.

A-671, 1 plata de estructura.



A-219, 1 asa, 1 mariposa, 2 de 4 pétalos, 3 plumas, 2 N.I.  
 Figure PTQ 8A 5-21. Feathered Serpent Pyramid.

A-671, 1 plata de estructura.

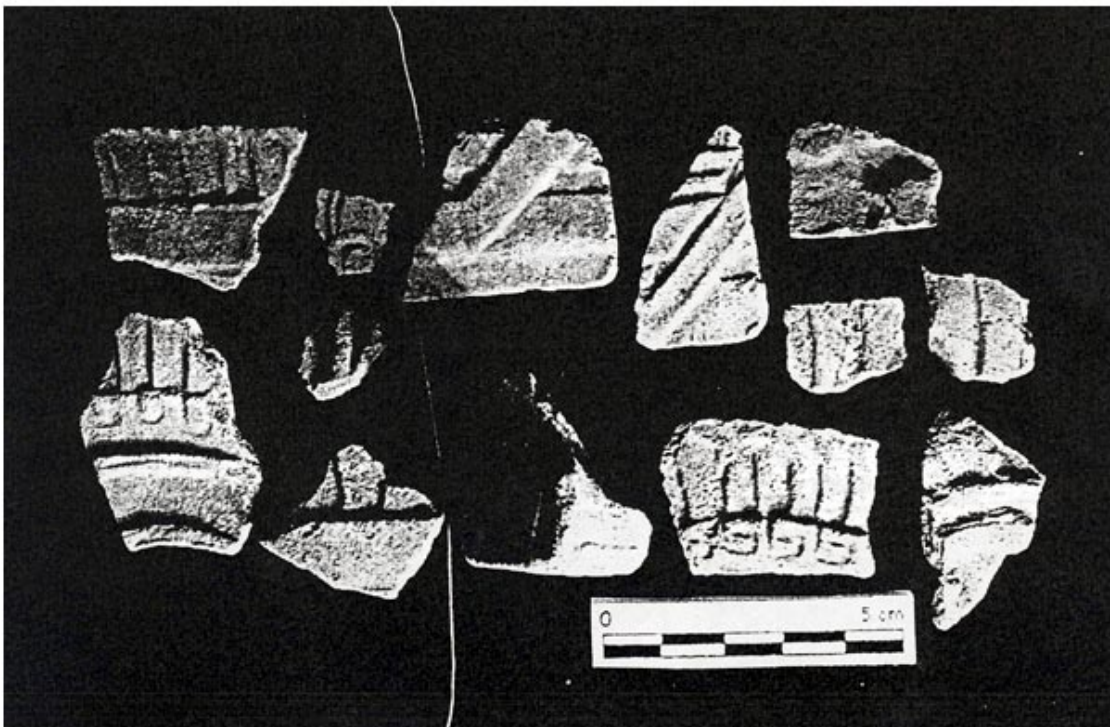


A-276, 1 pluma, 1 de 4 pétalos, 1 manta, 1 placa con incisiones.  
 Figure PTQ 8A 5-22. Feathered Serpent Pyramid.

A-671, 3 N.I.



A-221, 1 voluta, 2 plumas, 1 N.I. y 1 mariposa. A-321, 2 mantas, 1 ave, 1 voluta, 2 plumas y 2 N.I.  
 Figure PTQ 8A 5-23. Feathered Serpent Pyramid.



A-221, 1 voluta, 2 plumas, 1 N.I. y 1 mariposa. A-321, 2 mantas, 1 ave, 1 voluta, 2 plumas y 2 N.I.  
 Figure PTQ 8A 5-24. Feathered Serpent Pyramid.



A-130, orejera.      A-536, 2 N.I.      A-510, 1 máscara, 2 plumas, 1 manta.  
 Figure PTQ 8A 5-25. Feathered Serpent Pyramid.



A-130, orejera.      A-536, 2 N.I.      A-510, 1 máscara, 2 plumas, 1 manta.  
 Figure PTQ 8A 5-26. Feathered Serpent Pyramid.



Figure PTQ 8A 5-27. Feathered Serpent Pyramid. A-142, 2 máscara, 1 orejera, 1 pluma, 3 mantas, (1?).



Figure PTQ 8A 5-28. Feathered Serpent Pyramid. A-142, 2 máscara, 1 orejera, 1 pluma, 3 mantas, (1?).



Figure PTQ 8A 5-29. Feathered Serpent Pyramid. A-142, 8 plumas y 2 N.I.



Figure PTQ 8A 5-30. Feathered Serpent Pyramid. A-142, 8 plumas y 2 N.I.



A-182, 2 plumas y 1 de 4 pétalos.

A-372, 2 placas con rayas y 1 pluma.

Figure PTQ 8A 5-31. Feathered Serpent Pyramid.



A-311, 1 manta, 1 flor de 4 pétalos, 2 placas con rayas.

A-181, 1 pluma y 1 flor.

A-530, 1 manta, 1 de 4 pétalos, 1 placa con rayas.

Figure PTQ 8A 5-32. Feathered Serpent Pyramid.





A-311, 1 manta, 1 flor de 4 pétalos, 2 placas con rayas. A-181, 1 pluma y 1 flor. A-530, 1 manta, 1 de 4 pétalos, 1 placa con rayas.

Figure PTQ 8A 5-33. Feathered Serpent Pyramid.



Figure PTQ 8A 5-34. Feathered Serpent Pyramid. A-138, 3 mantas, 1 placa lateral y 6 mariposas.



Figure PTQ 8A 5-35. Feathered Serpent Pyramid. A-138, 3 mantas, 1 placa lateral y 6 mariposas.



Figure PTQ 8A 5-36. Feathered Serpent Pyramid. A-138, 3 flores, 1 voluta, 5 plumas, 1 placa con rayas y 3 N.I.



Figure PTQ 8A 5-37. Feathered Serpent Pyramid. A-138, 3 flores, 1 voluta, 5 plumas, 1 placa con rayas y 3 N.I.



A-536, 1 N.I., 1 placa con rayas. A-517, 2 plumas, 1 voluta, 1 manta, 2 flores de 4 pétalos, 2 N.I.

Figure PTQ 8A 6-0. Feathered Serpent Pyramid.



A-536, 1 N.I., 1 placa con rayas. A-517, 2 plumas, 1 voluta, 1 manta, 2 flores de 4 pétalos, 2 N.I.  
 Figure PTQ 8A 6-1. Feathered Serpent Pyramid.



Figure PTQ 8A 6-2. Feathered Serpent Pyramid. A-211, 3 mantas, 1 atado de plumas, 1 máscara, 1 flor, 3 plumas, 2 placas con rayas.



Figure PTQ 8A 6-3. Feathered Serpent Pyramid. A-211, 3 mantas, 1 atado de plumas, 1 máscara, 1 flor, 3 plumas, 2 placas con rayas.

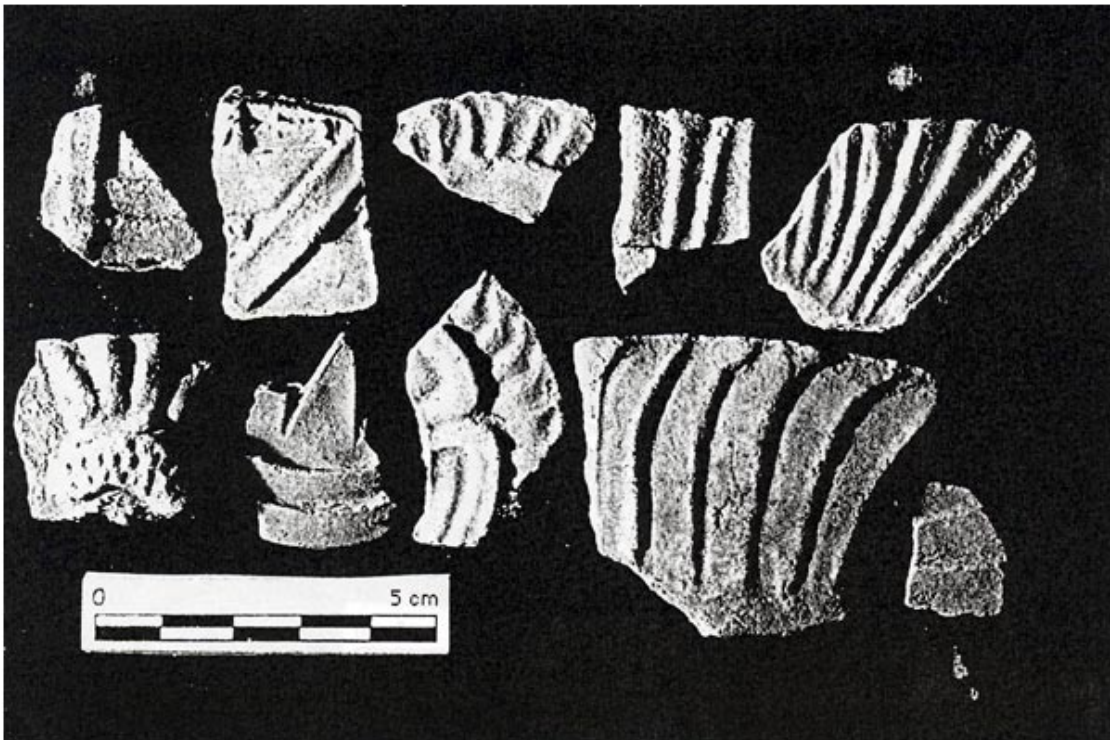


Figure PTQ 8A 6-4. Feathered Serpent Pyramid. A-145, 4 plumas, 2 flores de 4 pétalos, 2 mantas, 1 punta y 1 N.I.



Figure PTQ 8A 6-5. Feathered Serpent Pyramid. A-145, 4 plumas, 2 flores de 4 pétalos, 2 mantas, 1 punta y 1 N.I.



A-238, 1 mariposa, 1 punta de flecha, 1 placa con rayas y 1 N.I.

A-149, 3 manta, 1 punta de flecha, 1 orejera y 1 flor de 4 pétalos.

Figure PTQ 8A 6-6. Feathered Serpent Pyramid.



A-238, 1 mariposa, 1 punta de flecha,  
1 placa con rayas y 1 N.I.

A-149, 3 manta, 1 punta de flecha, 1 orejera y 1 flor de 4 pétalos.

Figure PTQ 8A 6-7. Feathered Serpent Pyramid.



A-118, 1 mariposa, 1 voluta, 1 atado de plumas,  
2 flores de 4 pétalos, 2 mantas.

A-533, 1 placa con rayas, 3 plumas, 1 flor de 4 pétalo.

Figure PTQ 8A 6-8. Feathered Serpent Pyramid.



A-118, 1 mariposa, 1 voluta, 1 atado de plumas,  
2 flores de 4 pétalos, 2 mantas.  
Figure PTQ 8A 6-9. Feathered Serpent Pyramid.

A-533, 1 placa con rayas, 3 plumas, 1 flor de 4 pétalo.

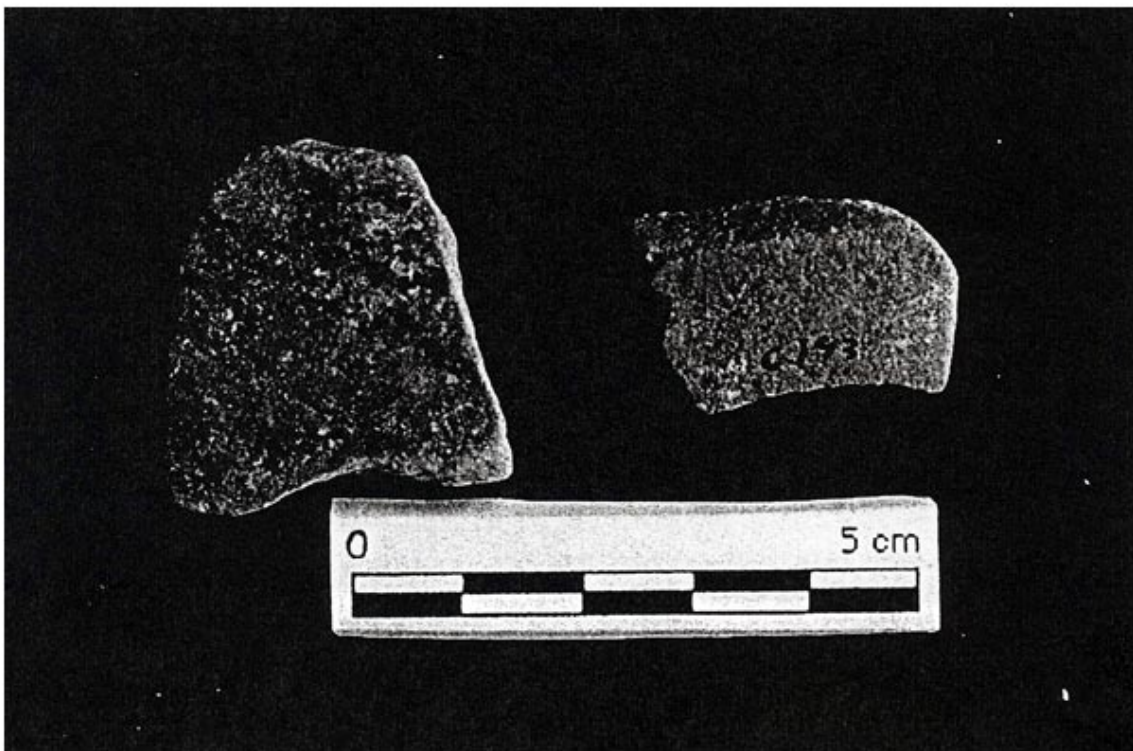


Figure PTQ 8C 13-0. Feathered Serpent Pyramid. 8C-27, Capa I: 1.42-1.00m. 8C-193, Capa XV: 10.3-11.7m profundidad.





Figure PTQ 8C 13-1. Feathered Serpent Pyramid. 8C-27, Capa I: 1.42-1.00m. 8C-193, Capa XV: 10.3-11.7m profundidad.



Figure PTQ 8C 13-2. Feathered Serpent Pyramid.



Figure PTQ 9C 13-3. Feathered Serpent Pyramid. 9C-830, Pozo 25, Capa LXVI-E, Sector Sur, 5 pzs.

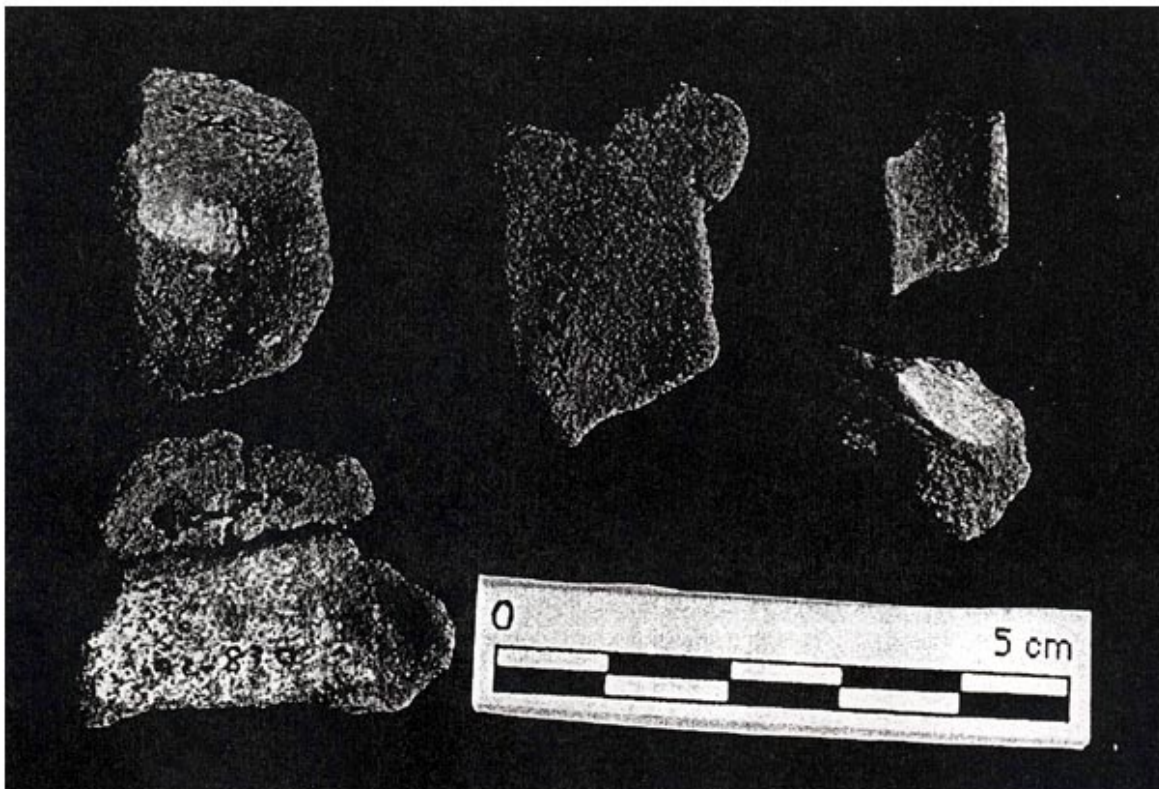


Figure PTQ 9C 13-4. Feathered Serpent Pyramid. 9C-830, Pozo 25, Capa LXVI-E, Sector Sur, 5 pzs.

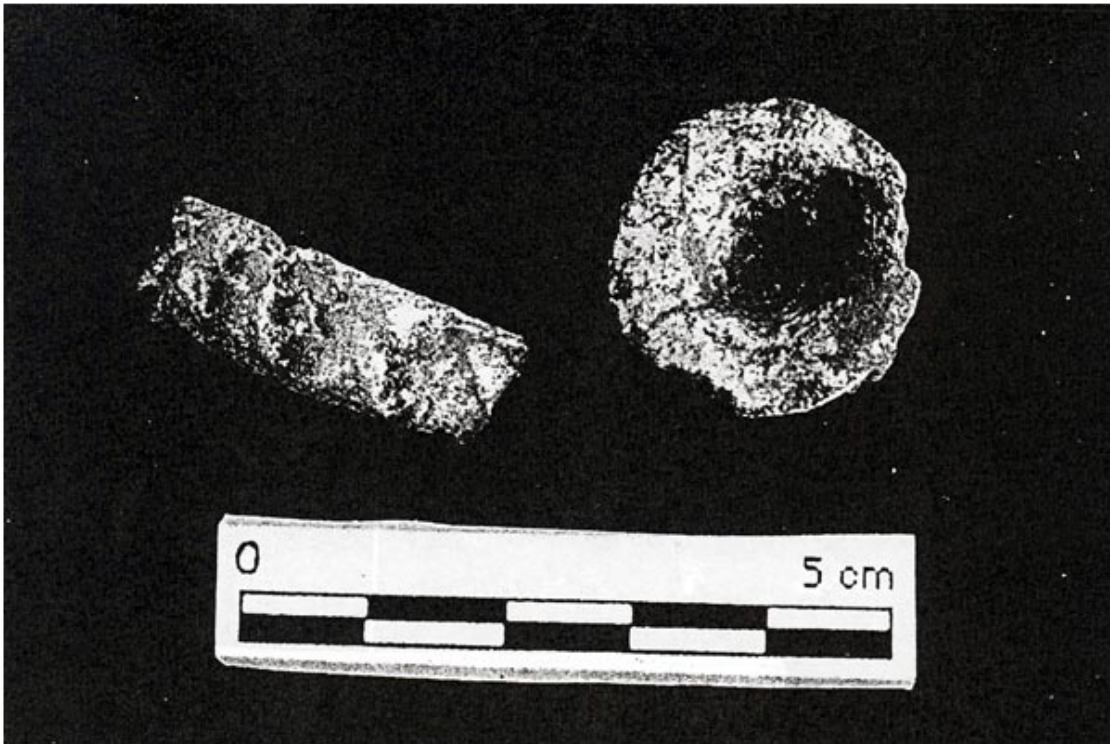


Figure PTQ 9C 13-5. Feathered Serpent Pyramid. 9C-1083, LXIX, Pozo 29. 9C-1789, LXIX, Pozo 45.



Figure PTQ 9C 13-6. Feathered Serpent Pyramid. 9C-1083, LXIX, Pozo 29. 9C-1789, LXIX, Pozo 45.



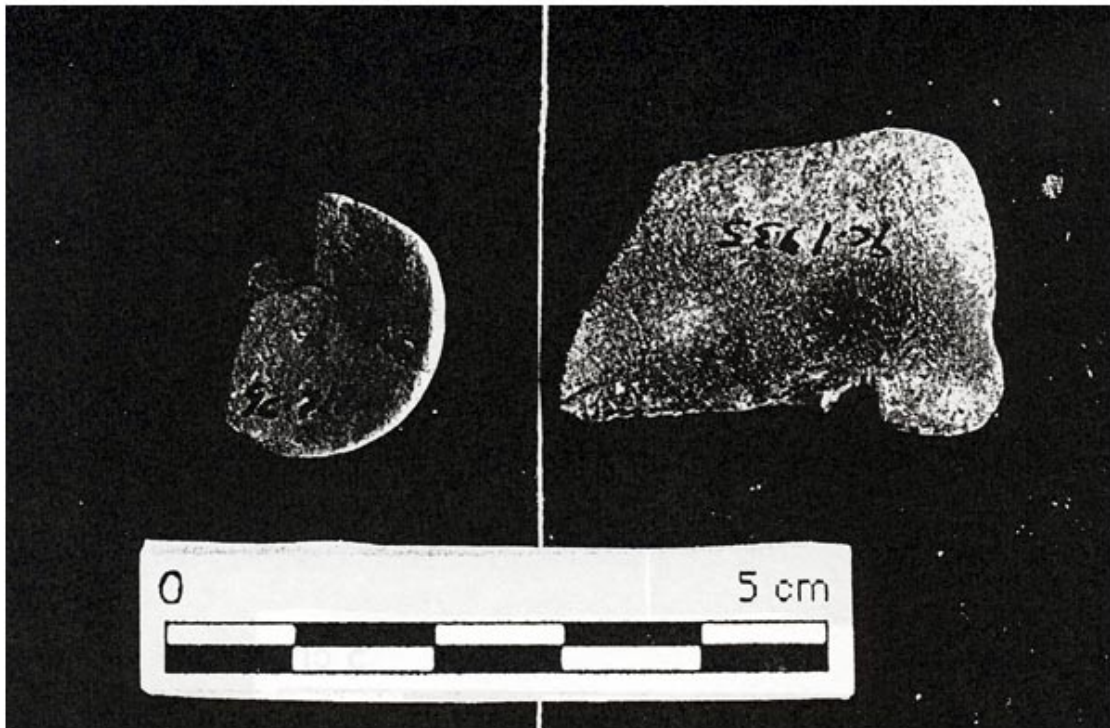
9C-802, LXIX, Pozo 23, Sector NW  
 Figure PTQ 9C 13-7. Feathered Serpent Pyramid.

9C-2101, LXVI-F a LXXVIII-A' Pozo 28, Fosa 4.



9C-802, LXIX, Pozo 23, Sector NW  
 Figure PTQ 9C 13-8. Feathered Serpent Pyramid.

9C-2101, LXVI-F a LXXVIII-A' Pozo 28, Fosa 4.



9C-717, LXXV, Pozo 14 cerca de Fosa 3.

9C-1935, Capa 1, Pozo 43.

Figure PTQ 9C 13-9. Feathered Serpent Pyramid.



9C-717, LXXV, Pozo 14 cerca de Fosa 3.

9C-1935, Capa 1, Pozo 43.

Figure PTQ 9C 13-10. Feathered Serpent Pyramid.



9C-1948, Capa IX, Pozo 43.

9C-459, Capa LXIX-C, Pozo 7-8.

Figure PTQ 9C 13-11. Feathered Serpent Pyramid.



9C-1948, Capa IX, Pozo 43.

9C-459, Capa LXIX-C, Pozo 7-8.

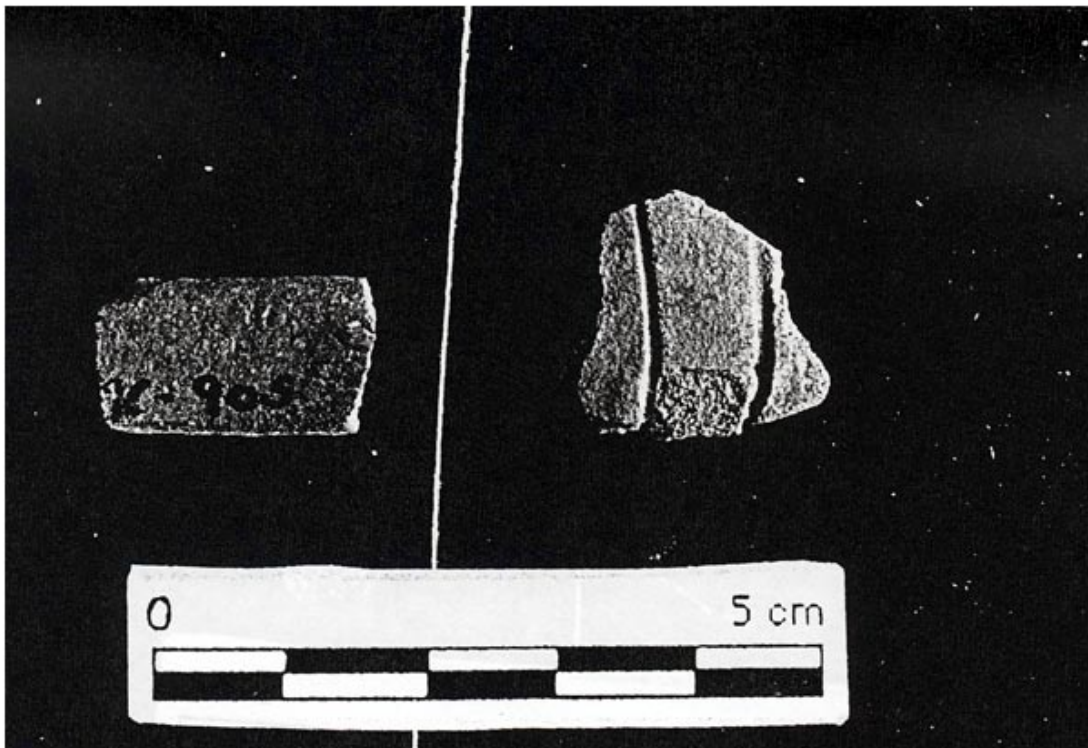
Figure PTQ 9C 13-12. Feathered Serpent Pyramid.



9C-1788, LXIX Pozo 45.

9C-1478, Capa LXIX Pozo 36.

Figure PTQ 9C 13-13. Feathered Serpent Pyramid.



9C-905, LXVI Pozo 27.

9C-869, Capa LXVI-C Pozo 24 Sur.

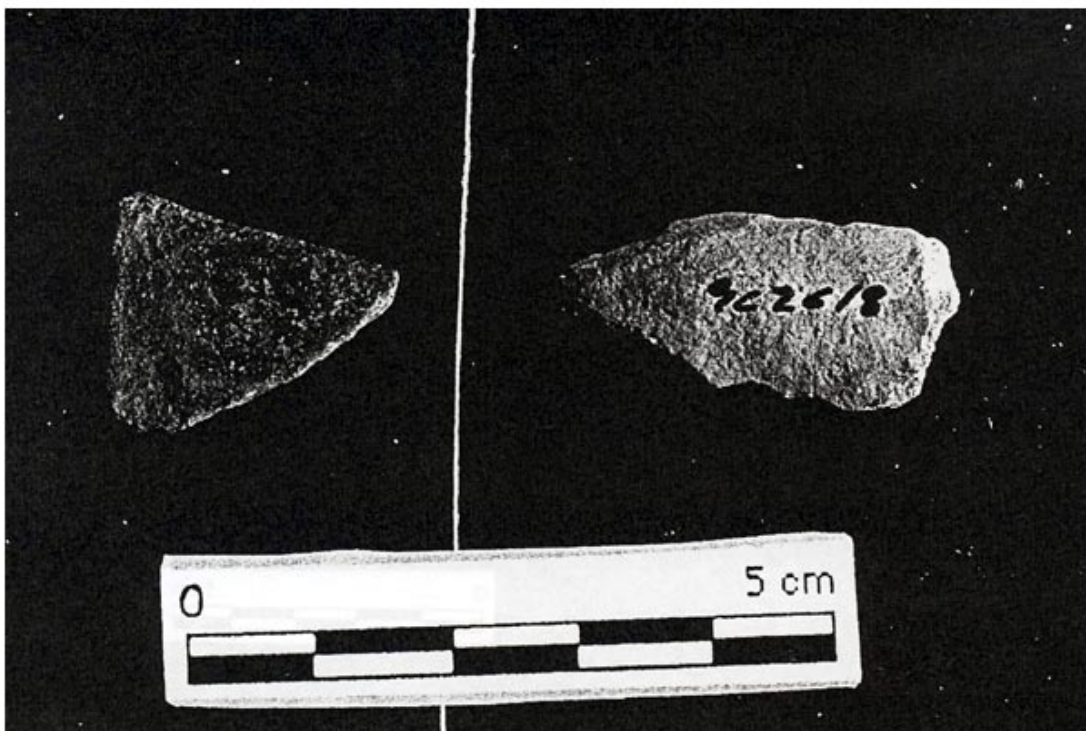
Figure PTQ 9C 13-14. Feathered Serpent Pyramid.



9C-905, LXVI Pozo 27.

9C-869, Capa LXVI-C Pozo 24 Sur.

Figure PTQ 9C 13-15. Feathered Serpent Pyramid.



9C-2085, Capa LXXVIII-A' Pozo 23 y 31.

9C-2618, Capa CXXXVI y Capa XXXVII, Túnel Central.

Figure PTQ 9C 13-16. Feathered Serpent Pyramid.





Figure PTQ 9C 13-17. Feathered Serpent Pyramid. 9C-1129 y otras base de incensario, huella de quema: interior, huella de aplicaciones: exterior.



Figure PTQ 9C 13-18. Feathered Serpent Pyramid. 9C-1129 y otras base de incensario, huella de quema: interior, huella de aplicaciones: exterior.



Figure PTQ 9C 13-19. Feathered Serpent Pyramid. 9C-1129, Adornos de incensario, Tubo.



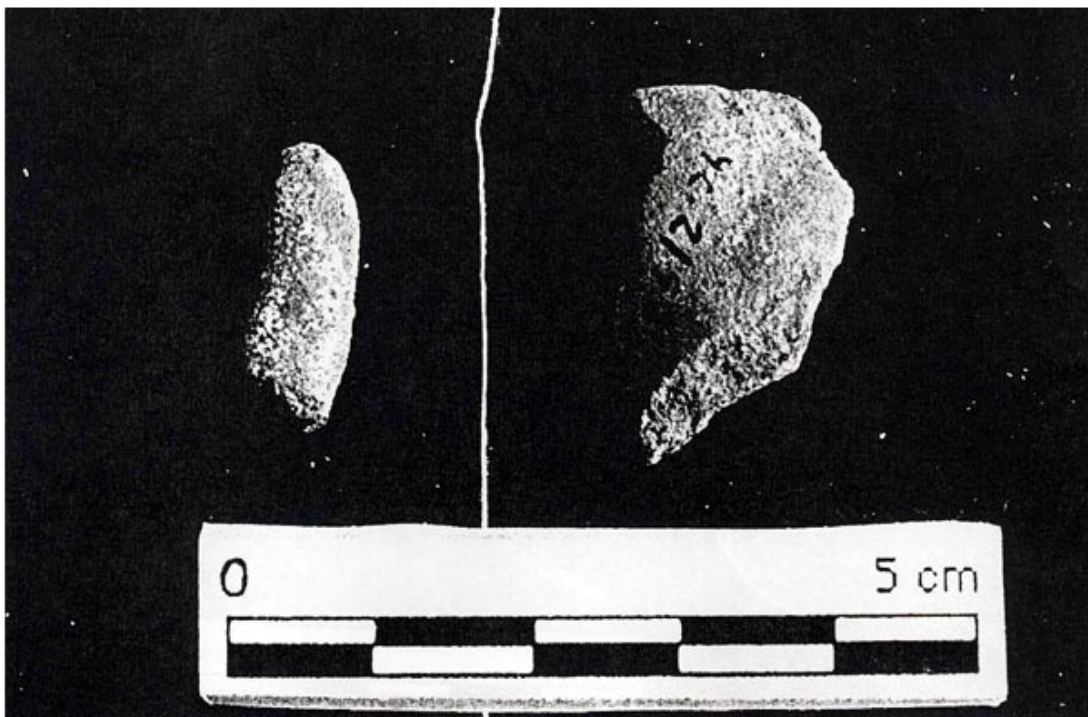
Figure PTQ 9C 13-20. Feathered Serpent Pyramid. 9C-1129, Adornos de incensario, Tubo.



9C-1102, Capa LXVI-G, Pozo 29.

9C-2197, Capa XCV, Túnel Central.

Figure PTQ 9C 13-21. Feathered Serpent Pyramid.



9C-1102, Capa LXVI-G, Pozo 29.

9C-2197, Capa XCV, Túnel Central.

Figure PTQ 9C 13-22. Feathered Serpent Pyramid.



9C-397, Capa LXIX-A, Pozo 5 y 6.

9C-2081, Capa IV-E y F, Pozo 23-31.

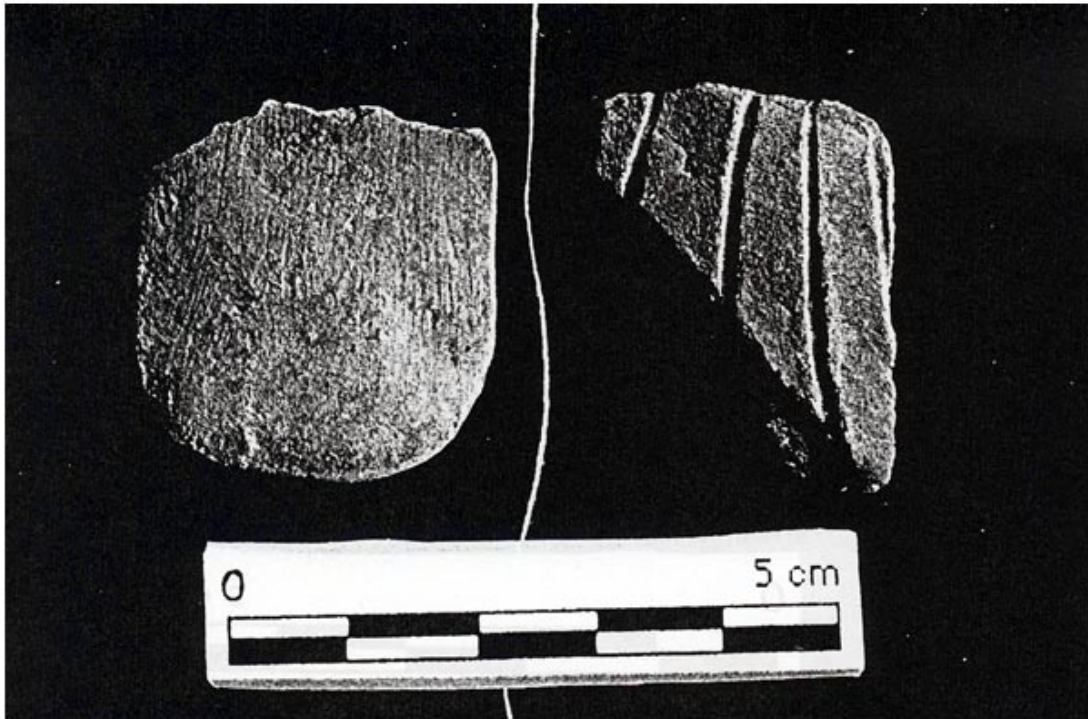
Figure PTQ 9C 13-23. Feathered Serpent Pyramid.



9C-397, Capa LXIX-A, Pozo 5 y 6.

9C-2081, Capa IV-E y F, Pozo 23-31.

Figure PTQ 9C 13-24. Feathered Serpent Pyramid.



9C-349, Capa LXIX, Pozo 3, Túnel Antiguo.

9C-279, Capa LXIX, Túnel Antiguo, Zona 9.

Figure PTQ 9C 13-25. Feathered Serpent Pyramid.



9C-349, Capa LXIX, Pozo 3, Túnel Antiguo.

9C-279, Capa LXIX, Túnel Antiguo, Zona 9.

Figure PTQ 9C 13-26. Feathered Serpent Pyramid.



9C-826, Capa LXVI-E, Pozo 24.

9C-2421, Capa CXXIX, Tumba prof. 10-11 cm.

Figure PTQ 9C 13-27. Feathered Serpent Pyramid.



9C-826, Capa LXVI-E, Pozo 24.

9C-2421, Capa CXXIX, Tumba prof. 10-11 cm.

Figure PTQ 9C 13-28. Feathered Serpent Pyramid.



Figure PTQ 9C 13-29. Feathered Serpent Pyramid. 9C-1136, Capa LXIX, Pozo 31.



9A-144, N1E1, 14-5-6, Capa VIII.

9A-133, N1E1, 14-5-37.

Figure PTQ 9A 13-30. Feathered Serpent Pyramid.



Figure PTQ 9A 13-31. Feathered Serpent Pyramid. 9A-52, 9A-51.



9A-153, Capa VIII, N1E1, 14-5-28, plumas y otros.  
 Figure PTQ 9A 13-32. Feathered Serpent Pyramid.

9A-146, Capa VIII, N1E1, 14-5-39.





9A-150.

9A-161.

9A-1367.

Figure PTQ 9A 13-33. Feathered Serpent Pyramid.

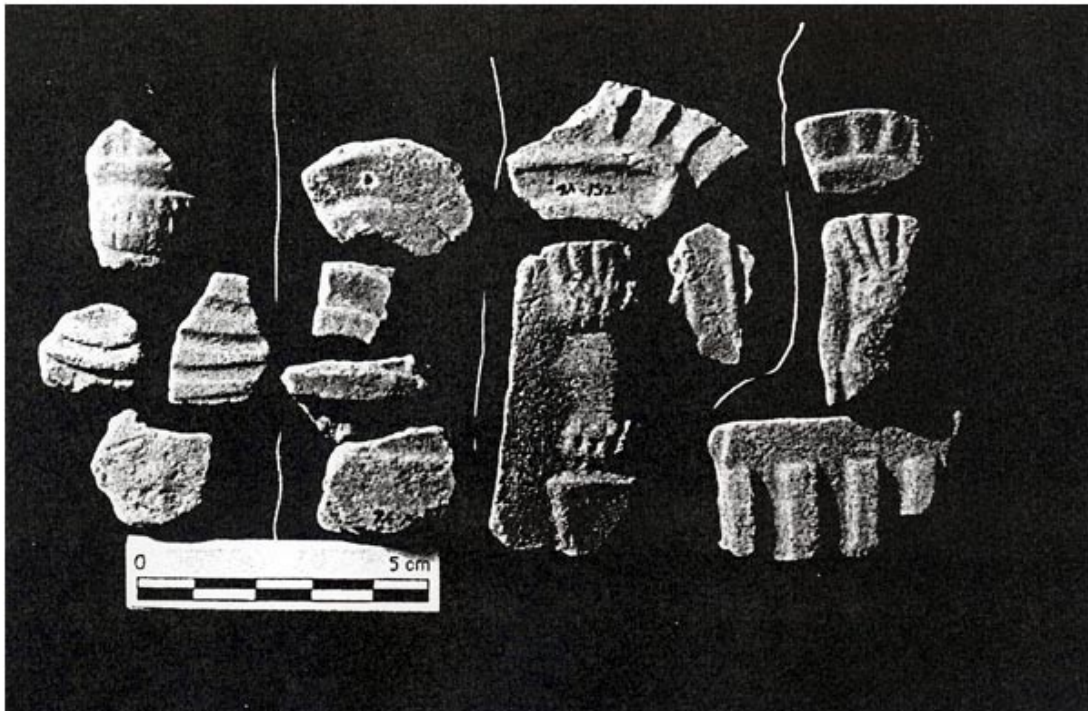


9A-1430, N1E1, 14-611,  
Capa VII y VIII.

9A-131, N1E1, 14-5-40, Capa VIII.

9A-733, N1E1, 14-4-7, Capa I-VIII.

Figure PTQ 9A 13-34. Feathered Serpent Pyramid.



9A-138.

9A-147.

9A-157.

9A-304.

Figure PTQ 9A 13-35. Feathered Serpent Pyramid.



9A-1310, N1E1, 14-6-1, Capa I y II.

9A-1162, N1E1, 9-94-96, Capa IX.

9A-164, N1E1, 14-5-28, Capa IX.

Figure PTQ 9A 13-36. Feathered Serpent Pyramid.



9A-135, manta, v-shape bundle, 4 pétalos.

9A-1086, 1 aplicación.

Figure PTQ A 15-27. Feathered Serpent Pyramid.



9A-135, manta, v-shape bundle, 4 pétalos.

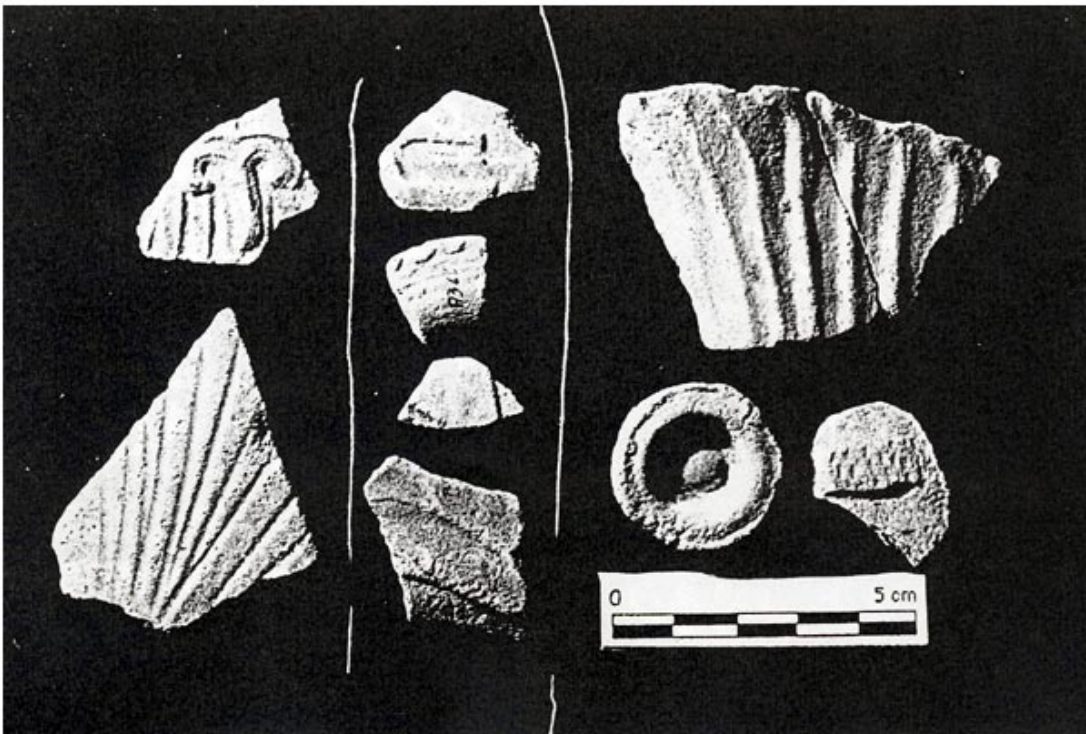
9A-1086, 1 aplicación.

Figure PTQ A 15-28. Feathered Serpent Pyramid.



A-240, 1 placa, 1 V-manta, 1 orejera.      A-273, 1 placa, 1 orejera.      A-520, 1 mariposa, 1 pluma.

Figure PTQ A 15-29. Feathered Serpent Pyramid.



A-366.

A-241.

Figure PTQ A 15-30. Feathered Serpent Pyramid.