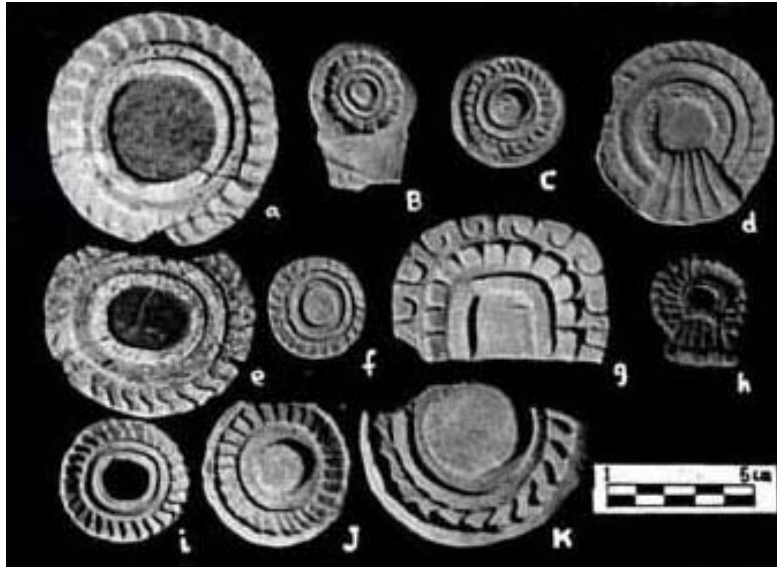


FAMSI © 2002: Saburo Sugiyama

Censer Symbolism and the State Polity in Teotihuacán



Research Year: 1998

Culture: Teotihuacán

Chronology: Late Pre-Classic to Late Classic

Location: Highland México

Site: Teotihuacán

Table of Contents

Introduction

Recording and Cataloging

Ritual Ceramics at a Workshop in the Ciudadela, Teotihuacán: Catalog

Presentation

Introduction

General Comments on Cataloging

Quantification Tables

Note on the Conventions Used for Captions

Catalog:

I. Phytomorphic: Realistic and Schematized Representations

II. Zoomorphic: Realistic and Schematized Representations

III. Anthropomorphic: Attributes of Deities and Characters

IV. Other Motifs: Different Representations and Symbols

V. Other Pieces: Censer Fragments and Molds

Bibliography

[Data Base for Theater-type Censers Found in Teotihuacán and Abroad #1](#)

"Adornos" and molds for censers from the "North Palace" in the Ciudadela,
Teotihuacán Archaeological Project 1980-82, INAH

"Adornos" and molds for censers from Compound "Group 5" of the Sector
N5W1,

Scholarship Program, INAH

"Adornos" and molds for censers from surface collection in Teotihuacán,
[Teotihuacán Mapping Project](#)

"Adornos" and molds for censers from the Project of the Feathered Serpent
Pyramid in 1988-89,

Arizona State University and INAH

Preliminary Comments

Sources Cited

"Adornos" and molds for censers from surface collection in Teotihuacán.

Teotihuacán Mapping Project.



Figure TMP 1-0. Teotihuacán Mapping Project.

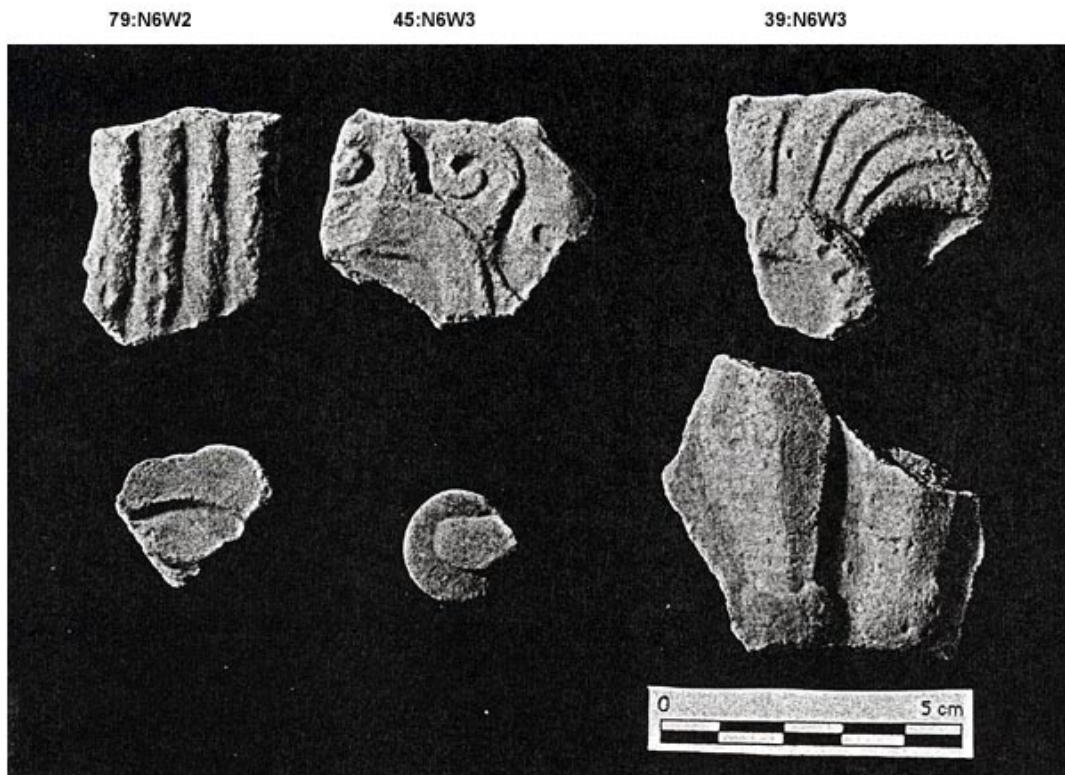


79:N6W2

11:N7W3

39:N6W3

Figure TMP 1-1. Teotihuacán Mapping Project.



79:N6W2

11:N7W3

39:N6W3

Figure TMP 1-2. Teotihuacán Mapping Project.



Figure TMP 1-3. Teotihuacán Mapping Project.

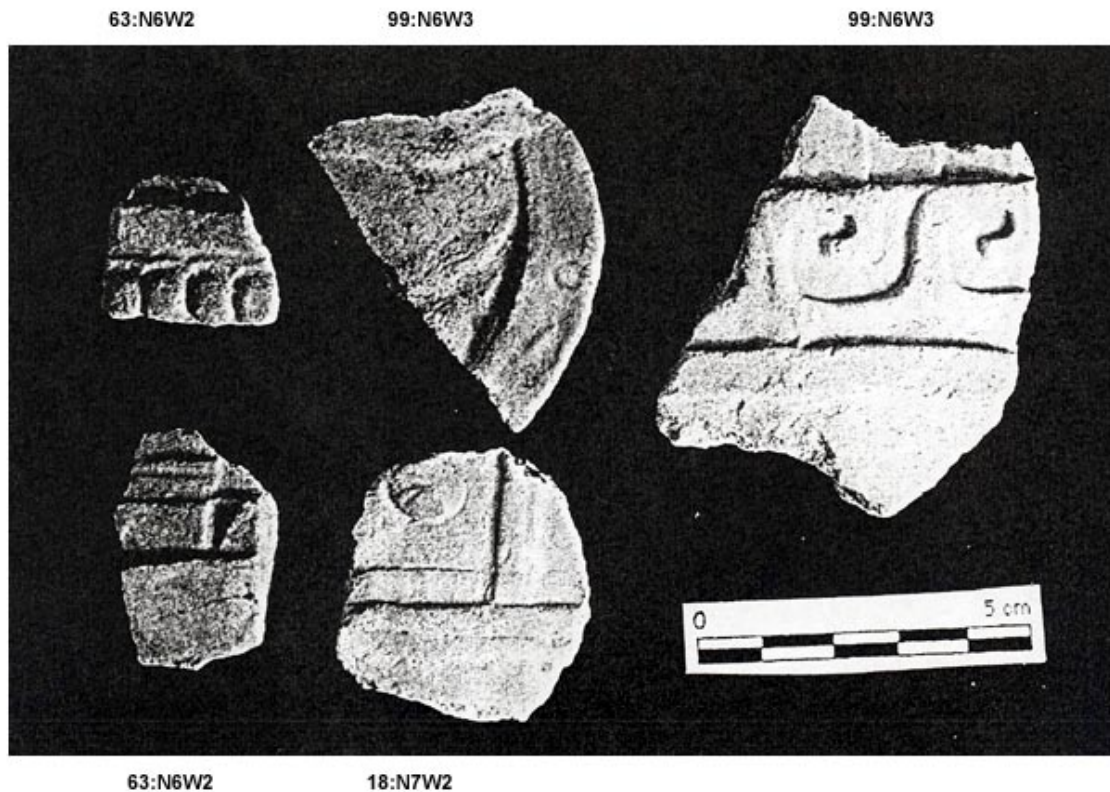


Figure TMP 1-4. Teotihuacán Mapping Project.



Figure TMP 4-32. Teotihuacán Mapping Project. Incensario del Barrio Oaxaqueño, hourglass base from U. of Americas Excavación Pit WIN 24, Redeposited Burial 1.

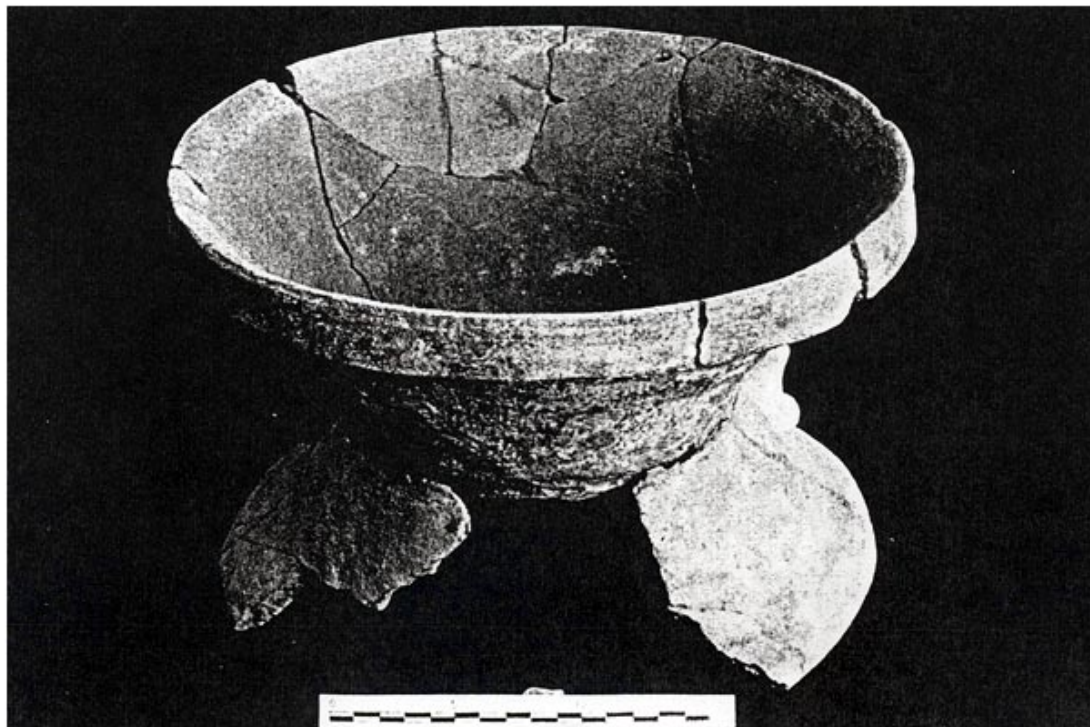


Figure TMP 4-33. Teotihuacán Mapping Project. Incensario del Barrio Oaxaqueño, hourglass base from U. of Americas Excavación Pit WIN 24, Redeposited Burial 1.



Figure TMP 4-34. Teotihuacán Mapping Project. Incensario del Barrio Oaxaqueño, hourglass base from U. of Americas Excavación Pit WIN 24, Redeposited Burial 1.

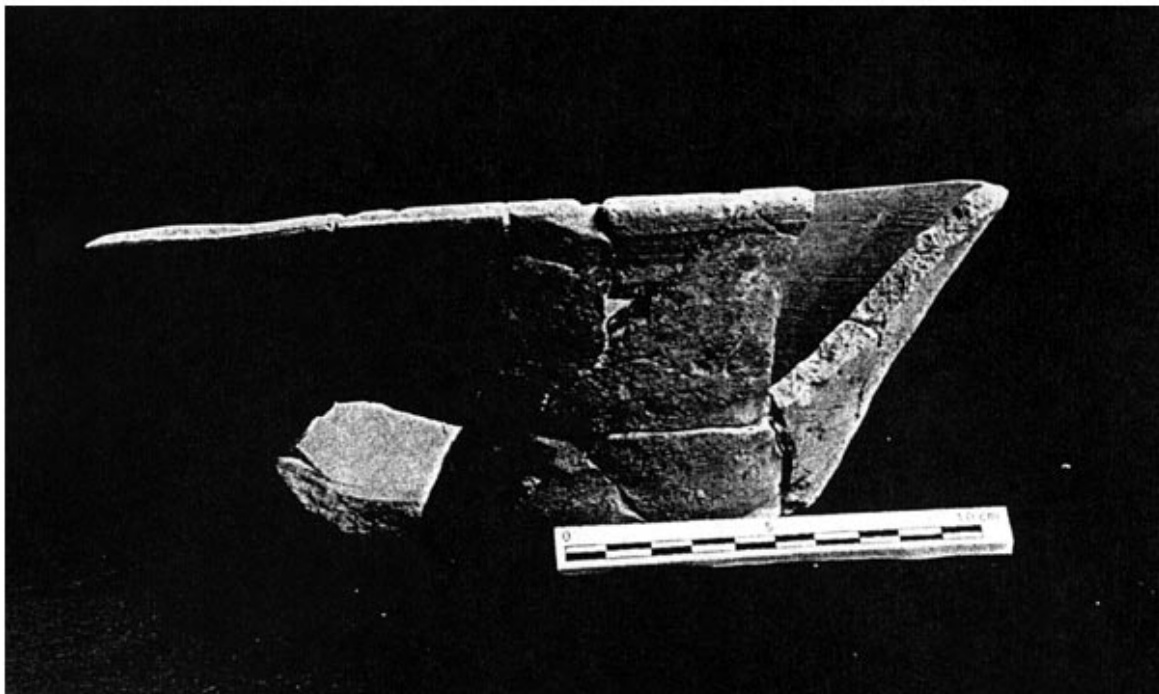


Figure TMP 4-35. Teotihuacán Mapping Project. Base de incensario sin procedencia.



Figure TMP 4-36. Teotihuacán Mapping Project. Base de incensario sin procedencia.



Figure TMP 5-0. Teotihuacán Mapping Project. Sin procedencia, Base de incensario.



Figure TMP 5-1. Teotihuacán Mapping Project. Sin procedencia, Base de incensario.



Figure TMP 15-31. Teotihuacán Mapping Project. 24:N3W7; N1W2.



Figure TMP 15-32. Teotihuacán Mapping Project. Purificación Vase. 2:N1W2; N5.



Figure TMP 15-33. Teotihuacán Mapping Project. 9:N2E3; 3:S1W2 N; Mold of Feathered Serpent on mat. V-manta L. Xol. 3:N1W2 EC.



Figure TMP 15-34. Teotihuacán Mapping Project. 19:N2E3; 24153 E6?; Earplug. 36:N6W2; Earplug.



Figure TMP 15-35. Teotihuacán Mapping Project. 10:N1W2 L. Xol. Mold. 10:N1W2 3 Orejera. 24:N2W6 Ave. 30:A:N3W1.

81 TE2CA

14:N7W3 Voluta

50:N2E3



14:N1W4 Met. censer, Tocado y pluma

9:N1W4 MET orejera?

Figure TMP 15-36. Teotihuacán Mapping Project.

81 TE2CA

14:N7W3 Voluta

50:N2E3



14:N1W4 Met. censer, Tocado y pluma

9:N1W4 MET orejera?

Figure TMP 15-37. Teotihuacán Mapping Project.